

1440 COWPATH RD. • HATFIELD, PA 19440
215/361-9099 • Fax: 215/361-9212
www.hunyady.com



'18 SAKAI SW354 AND '10 SAKAI SW800



'07 MACK CV713 GRANITE



'07 JOHN DEERE 650JLT

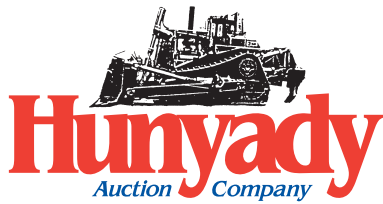
PRE-SORTED
FIRST CLASS MAIL
US POSTAGE
PAID
UPPER DARBY, PA
PERMIT #45



**VIRTUAL/LIVE BROADCAST
ABSOLUTE AUCTION
COMPLETE LIQUIDATION
McElroy Paving Co., Inc.**

**WEDNESDAY,
MARCH 2, 2022 - 9:00AM
Cranberry Township, Pennsylvania
(Pittsburgh Area)**

'15 VOGELE VISION 5103-2
AND '14 LEEBOY 7000B



McElroy Paving Co., Inc.

Online Bidding | Powered By:
proxibid

Please visit our website at
www.hunyady.com

Full Photo Library Available

Notice: Following more than (55) successful years in the paving, utility and sport field construction industries, Mr. David Butler, owner of McElroy Paving has decided to retire and completely liquidate all assets. A large portion of the equipment and trucks have been purchased new or dealer used purchases and are well-maintained and low hour usage. All items will sell to the highest bidder without minimums or reserves.

Location: The auction will be held at the McElroy Paving facility located at 9504 Goehring Road, Cranberry Twp, Pennsylvania 16066
(Please Note: There will be NO LIVE BIDDING onsite)

LIVE, VIRTUAL AUCTION: This auction is being conducted via **LIVE, VIRTUAL ONLINE ONLY**. There will be **NO LIVE BIDDING FROM THE SITE**. **ADDITIONALLY, there will be NO PAYMENTS accepted at the auction site! Payment must be paid either by wire transfer or credit card.**

Terms: Complete payment immediately after receipt of invoice by wire transfer or credit card only. Credit card payments will be charged a 3% processing fee.

Online Bidding: Live internet bidding will be provided by Proxibid. Proxibid will charge an Internet Service Provider Fee of 5% to the successful internet bidder for items over \$10,000 and 10% for items \$10,000 and under, for each lot purchased on-line. All bidders are required to register to bid through Proxibid.

Sales Tax: Since this contractor is selling items not normally sold in the course of his business, the Commonwealth of Pennsylvania considers this an isolated sale and does not require the auction company to collect sales tax.

Inspection: Items will be available for inspection one week prior to sale day, beginning Wednesday, February 23rd from 8:00am to 4:00pm. The site will be closed Saturday and Sunday February 26th and 27th.

Removal: Wednesday, March 2nd thru Wednesday, March 9th from 8:00am to 4:00pm. No loadout Saturday or Sunday, March 5th and 6th. All items must be removed by Wednesday, March 9, 2022 at 4:00pm.

Sale Site Phone: (800) BID-N-BUY • Sale Site Fax: (888) 859-8958

CONTRACTORS AND SHOP TOOLS

SPECTRA PHYSICS GL720 Long Range, Dual Slope Field Grade Laser, with tripod (Used With Motor Grader and Dozer Laser Grading) • **LASER ALIGNMENT DepthMaster 200 Laser Grade Receiver**, with magnetic base mount. (Dozer Blade or Excavator/Backhoe)
• **CORE CUT Model CC1800XL Walk Behind Concrete Saw**, Honda 13HP gas engine
• **KOHRING TVR150 Walk Behind Roller** • (2) **WACKER WP1500 Plate Compactors**, gas • **MQ MVC82VHW Plate Compactor**, Honda gas engine • 2014 **BOMAG BT60 Foot Compactor** • **WACKER BS50-2 Foot Compactor** • (3) **STIHL TS420 Demo Saws** • 2" Centrifugal Pump • **YAMAHA 5500 Watt Generator**, gas • **CENTURION 3250 Watt Generator**, gas • **KOBALT Electric Mortar Mixer** • (2) Gas Powered Edgers • **FRADAN Walk Behind Gas Powered Blower** • **STIHL FS56C String Trimmer** • **CRAFTSMAN Gas Leaf Blower** • **CRAFTSMAN 13/22/24 Walk Behind Tiller** • Walk Behind Seeder • (2) **LASER ALIGNMENT 3900 Rotating Lasers**, with tripods and sight bars • **AGATEC CL185 Rotating Laser** • **DAVID WHITE Level** • **OZTEC Electric Concrete Vibrator** • Concrete Blankets • (2) **WINDMASTER Sign Stands** • **WERNER 24' Aluminum Extension Ladder** • (3) Wheelbarrows • **Portable Steam Cleaner**, Honda 1 cylinder gas engine, oil fired heat • **THERMAL ARC DC/CC Welding Generator**, Honda GX270 gas engine, cart mounted • **LINCOLN AC225 Arc Welder** • Oxygen Acetylene Torch Set with Cart • **OMEGA 3-Ton Hydraulic Floor Jack** • Big Red Hydraulic Floor Jack • **NAPA Portable Battery Charger** • (4) 2-Wheel Dolly's • 24" Portable Shop Fan • **BOSCH Hammer Drill** • **DEWALT 1/2" Drill** • **BOSCH Angle Grinder** • **MILWAUKEE Reciprocating Saw** • Electric Angle Buffer • Pneumatic Chipping Hammer • 16 Gallon 6.5 HP Shop Vac • Assorted Hand Tools



CONTRACTORS AND SHOP TOOLS

For Complete Listing Please See Our Photo Library at www.hunyady.com!

ASPHALT PAVERS AND ROLLERS

2015 VOGELE Model Vision 5103-2 Rubber Tired Paver, s/n 09830121, powered by Cummins QSB6.7, 170HP diesel engine, equipped with Carlson EZIV08, 8'6" – 14'6" electric heated vibratory screed, VogelegoErgoPlus screed controls with umbilical remote, Topcon System Four sonic grade controls, Topcon laser grade control ready, power assist drive bogie, spray down system, and 16.00-24 tires. In good condition with good tires. (Meter Reads 2,127 Hours) (Additional 1' Screed Extension and 24" Wedge Curb Attachment) **(Purchased New)**



'15 VOGELE VISION 5103-2

2014 LEEBOY Model 7000B Crawler Paver, s/n 109750, powered by Kubota diesel engine, equipped with Legend 8' to 13' propane heated vibratory screed, slope and grade and crown controls, and spray system. In good condition with good undercarriage. (Meter Reads 1,685 Hours) **(Purchased New)**



'14 LEEBOY 7000B

2018 SAKAI Model SW354 Tandem Vibratory Roller, s/n 45W78-30153C, powered by Kubota diesel engine, equipped with 47.5" smooth drums, drum vibrator selector, spray system, and ROPS post. In very good condition. (Meter Reads 691 Hours) **(Purchased New)**



'18 SAKAI SW354

2011 BOMAG Model BW138AD Tandem Vibratory Roller, s/n 101650172029, powered by Deutz diesel engine, equipped with 54" smooth drums, dual frequency vibration, spray system, and ROPS post. In good condition. (Meter Reads 00,923 Hours) **(Purchased New)**



'11 BOMAG BW138AD

2010 SAKAI Model SW800 Tandem Vibratory Roller, s/n VSW19-10109, powered by Isuzu diesel engine and hydrostatic transmission, equipped with 67" smooth drums, dual frequency vibration, drum vibration selector, spray system, and ROPS canopy. In good condition. (Meter Reads 4,294 Hours) **(Purchased New)**



'10 SAKAI SW800

HYDRAULIC EXCAVATORS AND ATTACHMENTS

2005 KOBELCO Model SK135 SRLC-1E Hydraulic Excavator, s/n YH03-02521, powered by Isuzu diesel engine, equipped with 9'10" dipper stick, Geith hydraulic coupler, auxiliary hydraulics, CP 42" digging bucket, enclosed ROPS cab with heat and air conditioning, and 24" TBG pads. In good condition with good undercarriage. (Meter Reads 07,368 Hours) **(Purchased New)**



'05 KOBELCO SK135 SRLC-1E



'05 CAT 304CR

2005 CATERPILLAR Model 304CR Mini Hydraulic Excavator, s/n NAD04011, powered by Cat diesel engine, equipped with 4'6" dipper stick, auxiliary hydraulics, swing boom, Cat 24" digging bucket, 78" backfill blade, control pattern selector, enclosed ROPS cab with heat and air conditioning, and rubber tracks. In good condition with good tracks. (Meter Reads 04,534 Hours)

2004 TEREX Model HR-16 Mini Hydraulic Excavator, s/n 35813955, powered by Mitsubishi diesel engine, equipped with 5'3" dipper stick, dual auxiliary hydraulics, swing boom, Terex 24" digging bucket, 60" backfill blade, control pattern selector, enclosed ROPS cab with heat, and rubber tracks. In good condition with good tracks. (Meter Reads 003,740 Hours)



'04 TEREX HR-16

ALLIED 24" Hydraulic Plate Compactor (Fits Kobelco 135) • CP 42" Digging Bucket (Kobelco 135) • HENSLEY 24" Digging Bucket, with side cutters (Kobelco 135) • 12" Digging Bucket (Terex HR16) • 12" Digging Bucket (Cat 304)

CRAWLER TRACTORS



'07 JOHN DEERE 650JLT

2007 JOHN DEERE Model 650JLT Crawler Tractor, s/n 147815, powered by John Deere diesel engine and hydrostatic transmission, equipped with 6-way blade, Trimble GCS600 laser grade control system, enclosed ROPS cab with heat and air conditioning, and 19.5" SBG pads. In good condition with good undercarriage. (Meter Reads 2,976 Hours) **(Purchased New)**

1994 JOHN DEERE Model 650G Crawler Tractor, s/n 798282, powered by John Deere diesel engine and powershift transmission, equipped with 6-way blade, Topcon System Five laser grade control system, ROPS canopy, and 24" SBG pads. In good condition with good undercarriage. (Meter Reads 09,449 Hours) **(Purchased New)**



'94 JOHN DEERE 650G

MOTOR GRADER, BACKHOE, AND DIRT COMPACTOR



01 NEW HOLLAND RG80

2001 NEW HOLLAND Model RG80 Articulated Motor Grader, s/n 85506086, powered by New Holland 5.0L diesel engine and powershift transmission, equipped with 10' moldboard, Topcon System Five laser grade control and Topcon sonic grade control systems, front scarifier, enclosed ROPS cab with heat, and 15x19.5 tires. In good condition with good tires. (Meter Reads 2,825 Hours)

(Purchased New)

1999 JOHN DEERE Model 410E, 4x4 Tractor Loader Extend-A-Hoe, s/n 871842, powered by John Deere diesel engine and shuttle transmission, equipped with general purpose loader bucket, 24" digging bucket, rear manual coupler, rear auxiliary hydraulics, enclosed ROPS cab with heat, 12.5/80-16 front and 19.5Lx24 rear tires. In good condition with good tires.



99 JOHN DEERE 410E 4X4 E-HOE

Hydraulic Demolition Hammer (JD 510/610) • 42" Bolt-On Bucket Forks • **JOHN DEERE 12" Digging Bucket (JD 410)**

1989 DYNAPAC Model CA15II D Vibratory Compactor, s/n 598203, powered by Cummins diesel engine and hydrostatic transmission, equipped with 66" smooth drum, drum drive, dual frequency vibration, ROPS canopy, and 14.9x24 tires. In good condition with good tires. (Meter Reads 03,867 Hours)



89 DYNAPAC CA15II D

SKID STEER LOADERS AND ATTACHMENTS



19 NEW HOLLAND C245

2019 NEW HOLLAND Model C245 Crawler Skid Steer Loader, s/n NKM460013, powered by CNH 90HP diesel engine, equipped with 78" general purpose loader bucket with bolt-on cutting edge, hydraulic coupler, high flow auxiliary hydraulics, 10-pin electric connector, enclosed ROPS cab with heat and air conditioning, and 18" rubber tracks. In very good condition with good tracks. (Meter Reads 0,556 Hours) **(Purchased New)**

2017 GEHL Model RT210 Gen3 Crawler Skid Steer Loader, s/n 921854, powered by Yanmar Tier IV, 72HP diesel engine and 2 speed transmission, equipped with 78" general purpose loader bucket, hydraulic coupler, high flow auxiliary hydraulics, 9-pin electric connector, enclosed ROPS cab with heat and air conditioning, and 18" rubber tracks. In very good condition with good tracks. (Meter Reads 1,519 Hours) **(Purchased New)**



17 GEHL RT210 GEN3

2006 GEHL Model 4840 Skid Steer Loader, s/n 408640, powered by Deutz diesel engine, 69" general purpose bucket, high flow auxiliary hydraulics, ROPS canopy, and 10.50x16 tires. In good condition with good tires. (Meter Reads 4,496 Hours) **(Purchased New)**



06 GEHL 4840

1999 GEHL Model 6635DXT Skid Steer Loader, s/n 12015, powered by Deutz diesel engine, equipped with 72" general purpose loader bucket, high flow auxiliary hydraulics, ROPS canopy, and 12x16.5 tires. In good condition with good tires. (Meter Reads 5,744 Hours) **(Purchased New)**



99 GEHL 6635DXT

2014 ROADHOG RH2460-W Milling Attachment, s/n 1403012, powered by Deutz 61HP diesel engine, 24" milling head, power angle and side shift, and 90 gallon water tank. (New Drum Bearings) **(Purchased New)**

16" Cold Planer Attachment, with umbilical remote. **(Purchased New)** • **SANDVIC BR623 Hydraulic Demolition Hammer**, mounted on skid steer plate • **WOODS CPR720ST, 72" Hydraulic Angle Ground Preparator** • **LOWE Model 1650E Hydraulic Post Hole Digger w/10" auger** • **MCMILLEN 2030 5'6" Trencher Attachment**, with rock teeth • **66" Hydraulic Rock Hound** • **BRADCO PowR Sweep 84" Manual Angle Hydraulic Broom Attachment** • **SWEEPSTER BDC74M, 74" Hopper Broom** • **(2) SWEEPSTER 21572M-0022, 72" Hopper Brooms** • **SWEEPSTER 20572P-0022 Hopper Broom (Parts)** • **65" Hydraulic Broom Attachment** • **46" Skid Steer Forks (Reserved For Use During Loadout Until Tuesday, March 8th at 12:00 Noon)** • **72" General Purpose Bucket**, with teeth • **78" General Purpose Bucket**, with cutting edge • **70" Bolt-On Tooth Edge** • **10' Fabric Roll Spear (Fork Pockets)** • **BROYHILL 68" 3 Point Hitch Aerator** • **RAHN Model PHGL650G 3-Point Hitch Groomer** • **OHIO 3 Gang 24"x52" Tow Behind Rollers**



14 ROADHOG RH2460-W



08 JOHN DEERE 320

2008 JOHN DEERE Model 320 Skid Steer Loader, s/n 152118, powered by John Deere diesel engine, equipped with general purpose loader bucket, standard auxiliary hydraulics, (8) rear pocketbook counterweights, ROPS canopy, and 12x16.5 tires. In good condition with good tires. (Meter Reads 3,305 Hours) **(Purchased New)** (Reserved For Use During Loadout Until Tuesday, March 8th at 12:00 Noon)

TRUCK TRACTOR AND LOWBOY

2012 INTERNATIONAL Model Prostar + 122 Tandem Axle Truck Tractor, powered by Int'l MaxxForce A430, 430HP diesel engine and Fuller 10 speed transmission, equipped with 40,000 lb rear axles and 12,000 lb front axle, wetline, 52,000 lb GVWR, air ride suspension, single frame, air slide 5th wheel, 3-stage engine brake, power heated mirrors, power windows and locks, cruise control, air conditioning, and 245/75R22.5 tires. In good condition with good tires. (Odometer Reads 332,347 Miles)

1973 ROGERS Model THPG25-SSF22-40-15, 25 Ton Tandem Axle Paver Special Lowboy Trailer, equipped with hydraulic detachable ground bearing gooseneck, 64,900 lb GVWR, 22' wood sloped deck, 7'9" steel rear deck, 96" width, beam suspension, and 235/75R17.5 tires. In good condition with good tires.



'12 INTERNATIONAL PROSTAR + 122 AND ROGERS 25 TON

DUMP TRUCKS

2007 MACK Model CV713 Granite Tri-Axle Dump Truck,

powered by Mack AM1-370, 370HP diesel engine and Mack T310M, 10 speed with low and low low transmission, equipped with Ox 16' steel dump body with electric tarp,

40,000 lb rears and 18,000 lb front axle, camelback suspension, pintle hitch with air and electric, cruise control, air conditioning, 385/65R22.5 front, 11R24.5 rear, and 11R22.5 lift tires. In good condition with good tires. (Odometer Reads 263,406 Miles)



'07 MACK CV713 WITH 20 TON TILT DECK

2005 INTERNATIONAL Model 7600 Tri-Axle Dump Truck,

powered by Cat C-13 Acert diesel engine and Fuller 8LL, 10 speed transmission, equipped with Ox 16' tub style steel dump body with asphalt apron and electric tarp, 46,000 lb rears and 20,000 lb front and lift axles, 66,000 lb GVWR, block/beam suspension, 3-stage engine brake, aluminum wheels, heated mirrors, cruise control, air conditioning, 425/65R22.5 front, 11R24.5 rear, and 11R22.5 lift tires. In good condition with fair to good tires. (Odometer Reads 262,558 Miles) **(Purchased New)**



'05 INTERNATIONAL 7600

2000 FORD Model F-650XL Super Duty Dump Truck,

powered by Cat 7.0L diesel engine and 7 speed transmission, equipped with 10' steel dump body with chute, PTO hoist, 17,500 lb rear and 8,500 lb front axle, 26,000 lb GVWR, hydraulic brakes, tow package with electric, under body storage box, air conditioning, and 10R22.5 tires. In good condition with good tires. (Odometer Reads 113,068 Miles) (Zero Miles on New Clutch and Slave Cylinder - Installed October 2021)



'00 FORD F-650XL

2016 CHEVROLET Model 3500 HD, 4x4 Dump Truck,

powered by Vortec 6.0L gas engine and automatic transmission, equipped with Rugby 9' steel landscape dump body with wood sideboards, electric dump hoist, tow package, dual fuel tanks, dual rear wheels, under body storage box, running boards, power windows, locks, and mirrors, cruise control, air conditioning, and 235/80R17 tires. In good condition with good tires. (Odometer Reads 107,846 Miles)



'16 CHEVY 3500 HD 4X4

2011 FORD Model F-350XL Super Duty Dump Truck,

powered by V-8 gas engine and automatic transmission, equipped with 9' steel landscape dump body with wood sideboards, electric dump hoist, tow package, cruise control, air conditioning, and 245/75R17 tires. In good condition with good tires. (Odometer Reads 246,117 Miles) **(Purchased New)**



'11 FORD F-350XL

TILT DECK AND TAG-A-LONG TRAILERS

2010 INTERSTATE Model 40APC, 20 Ton Tandem Axle Tilt Deck Trailer,

equipped with 4' front stationary deck, 24' tilt rear deck, 6'6" ramps, 102" overall width, spring suspension, chain dogs, and 215/75R17.5 tires. In good condition with good tires.



'10 INTERSTATE 20 TON TILT DECK

1990 INTERNATIONAL Model U-18 Tandem Axle Tag Along Trailer,

equipped with 18' x 80" wood deck, 4'6" ramp gate, 13" side rails, spring suspension, and 225/75R15 tires. In good condition with very good tires.



'90 INTERNATIONAL U-18

1989 INTERSTATE Tandem Axle Tag Along Trailer,

equipped with 17' wood deck, 3' beavertail, 5' ramps, 6,000 lb GVWR, (2) stabilizers on one side, stowable side load ramps, chain dogs, and 12x16.5 tires. In fair to good condition with good tires. **(Purchased New)**

2014 VIKING Tandem Axle Tag Along Trailer, equipped with 13'3" x 81" wood deck, 5' ramps, spring suspension, and 225/75R15 tires. In good to very good condition with good tires.

2010 APPALACHIAN Tandem Axle Tag Along Trailer, equipped with 16' x 80" wood deck, 4' ramps, spring suspension, stake pockets, and 225/75R15 tires. In good condition with good tires.

1996 VIKING Tandem Axle Tilt Deck Trailer, equipped with 13' 10" level deck, 76" deck width, 24" beavertail, electric brakes, spring suspension, and 8.75R16.5 tires. In good condition with good tires.

2005 TOP BRAND Tandem Axle Tag Along Trailer, equipped with 16' x 80" wood deck, 4' ramps, stake pockets, and 225/70R15 tires. In good condition with good tires.

2003 US CARGO Model USC612S4 Aluminum Cargo Trailer, equipped with 6' x 12' aluminum body with fold-down rear and side swing doors, and 205/70R15 tires. In fair to good condition with good tires.

AIR COMPRESSOR, STRAW BLOWER, AND ASPHALT KETTLES



TGMI STRAW BLOWER

CHICAGO PNEUMATIC 175CFM Portable Air Compressor, s/n CE14667, powered by John Deere diesel engine. In good condition with good tires.

TGMI Tailgate Mulcher Portable Straw Blower, s/n 990011018, powered by Kohler 18HP gas engine, with rotating chute, pintle tow, and 175/80R13 tires. In good condition with good tires.

LEEBOY Model 150 Tack Distributor/ Crack Sealer, s/n 150T-46872, powered by Honda gas engine, equipped with dual propane burners and 205/75R14 tires. In good condition with good tires. **(Purchased New)**



LEEBOY 150 TACK DISTRIBUTOR AND REEVES TAR POT

REEVES Portable Tar Pot, equipped with propane heat and 185/75R14 tires. In good condition with good tires. **(Purchased New)**

FLATBED, UTILITY, AND PICKUP TRUCKS

2014 FORD Model F-350XL Super Duty, 4x4 Flatbed Truck,

powered by 6.2L gas engine and automatic transmission, equipped with 9' aluminum flatbed with side boxes and



'14 FORD F-350XL 4X4

underbody boxes, 100 gallon aluminum fuel tank, dual rear wheels, tow package, running boards, power windows and locks, cruise control, air conditioning, and 245/75R17 tires. In good condition with good tires. (Odometer Reads 69,462 Miles) **(Purchased New)**

2014 CHEVROLET Model 3500HD Utility Truck,

powered by Vortec 6.0L gas engine and automatic transmission, equipped with 8' open utility body,



'14 CHEVY 3500HD AND '11 CHEVY 3500 HD 4X4

100 gallon fuel tank with electric pump, aluminum material rack, tow package, dual rear wheels, cruise control, air conditioning, and 235/80R17 tires. In good condition with good tires. (Odometer Reads 126,152 Miles) **(Purchased New)**

2011 CHEVROLET Model 3500 HD, 4x4 Utility Truck, powered by Vortec 6.0L gas engine and automatic transmission, equipped with 9' open utility body, dual fuel tanks, aluminum material rack, dual rear wheels, tow package, cruise control, air conditioning, and 235/80R17 tires. In good condition with good tires. (Odometer Reads 135,335 Miles) **(Purchased New)**

2014 FORD Model F-150 XLT, 4x4 Extended Cab Pickup Truck,

powered by 5.0L gas engine and automatic transmission, equipped with 6'5" bed with aluminum cap with side boxes,



'14 FORD F-150XLT 4X4

tow package, running boards, power package, alloy wheels, cruise control, air conditioning, and 255/65R16 tires. In good condition with good tires. (Odometer Reads 107,695 Miles) **(Purchased New)**

MISCELLANEOUS

(2) 10'x5'x1" Road Plates • (12) 18x10' Curb Forms • (14) 6" Radius Curb Forms • (9) 18" Radius Curb Forms • Form Pins • 500 Gallon Fuel Tank, with containment dike • 100 Gallon Fuel Tank with Electric Pump • 1,500 Gallon Poly Tank • 400 Gallon Poly Tank • Small Qty Assorted Precast and Pavers