



1440 COWPATH RD. • HATFIELD, PA 19440
 215/361-9099 • Fax: 215/361-9212
 www.hunyady.com



13 JD 320D AND 12 JD 318D



BANDIT 1590XP AND 250XP



96 ACKER SOIL MAX

PRE-SORTED
 FIRST CLASS MAIL
 US POSTAGE
PAID
 UPPER DARBY, PA
 PERMIT #45



ABSOLUTE AUCTION
VIRTUAL, LIVE BROADCAST
COMPLETE LIQUIDATION
Lewandowski
Equipment
Co., Inc.

(2) 05 KENWORTH T300

WEDNESDAY,
DECEMBER 7, 2022 - 9:00AM
Mt. Pleasant, Pennsylvania (45 Miles SE of Pittsburgh)



**Lewandowski
Equipment Co., Inc.**



Notice: Following (40+) years of the sale of construction equipment, trucks and related tools, Mr. Lewandowski has decided it is time to retire and completely liquidate all inventory in order to pursue other interests. All equipment in this auction is owned by Lewandowski Equipment Co, Inc. and will sell at live-broadcasted, virtual Absolute Auction without minimums or reserves.

Location: The auction will be held at the office/yard facility located at 1 Wedding Lane, Mt. Pleasant, PA 15666 (Please Note: There will be NO LIVE BIDDING onsite)

LIVE, VIRTUAL AUCTION: This auction is being conducted via LIVE, VIRTUAL ONLINE ONLY. There will be NO LIVE BIDDING FROM THE SITE. ADDITIONALLY, there will be NO PAYMENTS accepted at the auction site! Payment must be paid either by wire transfer or credit card.

Terms: Complete payment immediately after receipt of invoice by wire transfer or credit card only. Credit card payments will be charged a 3% processing fee.

Financing: Financing is available, please contact Susan (215) 361-9099 at the auction company for details.

Online Bidding: Live internet bidding will be provided by Proxibid. Proxibid will charge an Internet Service Provider Fee of 5% to the successful internet bidder for items over \$10,000 and 10% for items \$10,000 and under, for each lot purchased on-line. All bidders are required to register to bid through Proxibid.

Sales Tax: Since this contractor is selling items that are considered inventory and sold in the course of his business, the Commonwealth of Pennsylvania requires the auction company to collect sales tax at the rate of 6%, unless presented with a valid exemption at time of transaction. Sales Tax is NOT due on titled vehicles and trailers until the time of registration.

Inspection: Items will be available for inspection beginning Wednesday, November 30th and continuing weekdays only, from 8:00AM to 4:00PM – the site will be closed Saturday and Sunday.

Removal: After complete payment items can be removed sale day until 4:00pm. Items may also be removed weekdays only, from 8:00AM to 4:00PM thru Wednesday, December 14th. The site will be closed Saturday and Sunday, December 10th and 11th All items must be removed by Wednesday, December 14, 2022 at 4:00PM.

Sale Site Phone: (800) BID-N-BUY • Sale Site Fax: (888) 859-8958

LOG LOADER BOOM AND TRUCK BODIES

2006 SERCO Model 8500 Log Loader Boom, s/n L-7223, equipped with knuckleboom with extension, rotating grapple, operator console, and (2) hydraulic stabilizers. In good condition.

UNUSED 8'6" Aluminum Dump Body, equipped with subframe and front mount hoist, 12V pump, and storage bins. (Fits 60" Cab to Axle Dimension)
9' Aluminum Utility Body (Fits Single Wheel Pickup)
(2) UNUSED 9' x 17" Flatbed Bodies, equipped with wooden deck, headache rack, and tiedowns.



UNUSED ALUMINUM DUMP BODY

LANDSCAPE AND SNOW REMOVAL

2-Deck Stationary Vibratory Screen, 6' x 52" screen with 1" opening, 5' x 52" screen with 2" opening, electronic vibrator • **TIMCO** Skid Mounted Straw Blower, Briggs & Stratton Vanguard 31HP, V-Twin gas engine, electric start, and 32" x 64" skid • **(22) UNUSED SCOUTMAT** 4' x 8' Landscape Ground Cover Panels • **SWENSON** Stainless Steel, 8' Hydraulic V-Box Spreader • **SWENSON** Stainless Steel, 8' Hydraulic Tailgate Spreader • **HTC** Stainless Steel, 8' Hydraulic Tailgate Spreader • **11'** Snow Plow and Frame, power angle • **(3)** 10' Snow Plows and Frames, power angle • **AIRFLOW** 76" Snow Plow, with quick hitch frame • **6'** Plow and Frame, power angle • **(4)** **MEYER** Electric/Hydraulic Snow Plow Pumps, **(3)** E47 and **(1)** E60



2-DECK STATIONARY VIBRATORY SCREEN

AIR COMPRESSORS AND LIGHT PLANTS

SULLAIR 375CFM Portable Air Compressor, s/n 004-95716, powered by JD diesel engine. In good condition.

2005 INGERSOLL RAND 185CFM Portable Air Compressor, s/n unknown (plate obliterated), powered by JD diesel engine, equipped with hose reels. In good condition.

2001 INGERSOLL RAND 185CFM Portable Air Compressor, s/n 321892UEL221, powered by JD diesel engine. In good condition.

1995 LEROI 185CFM Portable Air Compressor, s/n 3323X109, powered by JD diesel engine, equipped with hose reel. In fair to good condition.

INGERSOLL RAND 175CFM Portable Air Compressor, s/n 134216U83957, powered by JD diesel engine. In good condition.

ALLMAND Model ML8 Light Plant, s/n 0154ML, powered by Kubota diesel engine, equipped with 8000 watt generator, Power Tower, and (4) lamps. In good condition.

ALLMAND Model NL8 Light Plant, s/n 1017PR009, powered by Kubota diesel engine, equipped with 8000 watt generator, manual tower, and (4) lamp. In good condition.

2011 INGERSOLL RAND Model LS-60 Light Plant, s/n 429542UHVD72, powered by Kubota diesel engine, equipped with 6000 watt generator, manual tower, and (1) lamp. In good condition.

2011 INGERSOLL RAND Model LS-60 Light Plant, s/n 429531UHVD92, powered by Kubota diesel engine, equipped with 6000 watt generator, manual tower, and (4) lamps. In good condition.

2010 INGERSOLL RAND Model LS-60 Light Plant, s/n 416428UGUD92, powered by Kubota diesel engine, equipped with 6000 watt generator, manual tower, and (4) lamps. In good condition.

MAGNUM Model MLT3060M Light Plant, s/n 1308089, powered by Mitsubishi diesel engine, equipped with 6000 watt generator, (4) lamps, and manual tower. In good condition.

SULLIVAN 185CFM Portable Air Compressor, s/n 210689, powered by JD diesel engine. In fair condition.

CONTRACTOR EQUIPMENT AND TOOLS

DITCH WITCH 1820 Walk Behind Trencher, s/n 1L3345, Honda 18HP, V-Twin gas engine, 4' trencher bar with rock teeth

1994 WHITMAN Model HHN34T Ride-On Power Trowel, s/n ZA0204816, powered by Vanguard water cooled diesel engine, equipped with 40" twin trowels. In good condition. (New Clutch Upgrade)

OIRON CLAD Tandem Axle Vacuum Trailer, VIN# 42066064, equipped with 900 gallon vessel, Gardner Denver vacuum pump, hydraulic dumping factor vessel, and 235/75R17.5 tires. In good condition with good tires. (New Kohler Block and New Hydraulic Pump)

WACKER NEUSON PT6, 6" Portable Trash Pump, s/n 20187010, Kohler diesel engine, pintle tow • **MQ** MC12PH Portable Mortar Mixer, s/n D1561007, poly tub, Honda gas •

UNUSED 2021 AMMANN ATR680P Foot Compactor, Honda GX120 gas • **UNUSED 2020 TMG RM80** Gas Foot Compactor • **DYNAPAC LF90** Gas Plate Compactor •

GENERAC 1980CP Electric Pressure Washer, with heat, 1300PSI, 120V, 100' hose and gun • **SIMPSON 3500** PSI Cold Pressure Washer, Honda gas • **(2) ATLAS COPCO**

LP9-20P Hydraulic Power Pack, Honda GX270 gas engine, with leads • **ATLAS COPCO LH270** Hydraulic Breaker • **CP BRK40V** Hydraulic Breaker • **(2)** Hydraulic Pole Saws

• Hydraulic Limb Lopper • **WACKER** Electric Paving Breaker, with cart • **AEROQUIP FT1380-115** Model a Hydraulic Hose Crimper, with various dies, 115 volt • **LINCOLN**

Pwr Arc 4000 Welder Generator, Briggs & Stratton 8HP, 125 amp welder, 4000 watt generator • **BUX** Magnetic Drill, 3/4" chuck • Gas Powered Core Drill and Stand •

Assorted Core Drill Bits • **UNUSED MI-T-M 2"** Semi-Trash Pump, Honda GX120 gas • **UNUSED MI-T-M** Wheelbarrow Air Compressor, 1.5HP gas, 115V • **UNUSED**

WACKER NEUSON M2500 Concrete Vibrator, with head • **(2) NOVOPRESS** Rebar Cutter/Benders • **JAMESON 300'** Gas Line Locator, with receiver • **(4) HOVAIR SA12**,

2,000 lb Pneumatic Machinery Moving Air Pads • **UNUSED FILL-RITE 115** Volt Fuel Pump, hose and nozzle • **(4) UNUSED MITAS 11.5/80-15.3** Pneumatic tires, with rims,

6 lug • 56 Gallon Fuel Tank • **BUYERS** Gang Box • **UNUSED 3/8"** and **5/16"** Chain and Ratchet Binders • Silt Fence



OIRON CLAD VACUUM TRAILER

HYDRAULIC EXCAVATORS AND ATTACHMENTS



1998 JOHN DEERE Model 160LC Hydraulic Excavator, s/n 040350, powered by JD diesel engine and hydraulic drive, equipped with 10'3" dipper stick, WB 24" digging bucket, mechanical thumb, and 27.5" TBG pads. In good condition with good undercarriage.

'98 JOHN DEERE 160LC

2015 JOHN DEERE Model 35G Mini Excavator, s/n 273563, powered by JD diesel engine and hydraulic drive, equipped with 68" dipper stick, 12" digging bucket, swing boom, manual coupler, auxiliary hydraulics, 68" backfill blade, ROPS canopy, and 12" rubber tracks. In good condition with good tracks.



'15 JOHN DEERE 35G



'02 BOBCAT 341D

2002 BOBCAT Model 341D Mini Excavator, s/n 233211972, powered by Kubota diesel engine and hydraulic drive, equipped with 70" dipper stick, 24" digging bucket, swing boom, auxiliary hydraulics, 76" backfill blade, enclosed ROPS cab, and 15.5" rubber tracks. In good condition with fair to good tracks.

UNUSED 2021 AGROTK Model YM12 Mini Excavator, s/n UM1221122101, powered by CMXX 420cc gas engine and hydraulic drive, equipped with 32" dipper stick with stiff arm bracket, 16" digging bucket, auxiliary hydraulics, 36" backfill blade, 36" overall width, canopy, and 7" rubber tracks. In very good condition with very good tracks.



'21 AGROTK YM12

KENT KHB10G Hydraulic Hammer, 2,000 lbs impact energy (8-12 Ton Excavator Class) • **UNUSED 2020 TROJAN TH50 Hydraulic Hammer**, 45mm pins (Mini) • **UNUSED 2020 TROJAN TH35 Hydraulic Hammer**, 40mm pins (Mini) • **UNUSED 2019 TRHB TRHM530T Hydraulic Hammer** (2.5 - 4.5 Ton Machine) • 42" Hydraulic Forestry Mower (Bobcat 341) • **BAUMLIGHT MX230**, 30" Hydraulic Flail Mower (Bobcat 341) • 70" Cleanup Bucket (JD 160LC) • 36" Digging Bucket, with 90mm pins and 21" spread • **CP 30"** Digging Bucket, with 90mm pins and 21" spread (Link-Belt 330LX) • **CP 24"** Digging Bucket, quick coupler • **TERAN 24"** Digging Bucket, 30mm pins (Cat 301) • **TERAN 12"** Digging Bucket, 30mm pins (Cat 301)

CRAWLER MINI LOADER, SKID STEER LOADERS, AND ATTACHMENTS

UNUSED 2021 CORMIDI Model C1200 Walk Behind Crawler Mini Loader, s/n CRMCMF12E0L00479, powered by Kubota 25HP diesel engine and hydrostatic transmission, equipped with loader boom with manual coupler (23.5" plate) 40" tooth bucket, 42" forks, and 8" rubber tracks. In excellent condition.

UNUSED Wallenstein LGX210S Log Loader attachment with rotating grapple (Cormidi or Toro Dingo)

2005 CATERPILLAR Model 267B Crawler Skid Steer Loader, s/n CYC00633, powered by Cat diesel engine and hydrostatic transmission, equipped with 79" general purpose loader bucket, standard hydraulics, ROPS canopy, and ASV undercarriage with 18" rubber tracks. In good condition with fair to good tracks.

2005 ASV Model RC100 Crawler Skid Steer Loader, s/n RSD01474, powered by Perkins diesel engine and hydrostatic transmission, equipped with 72" general purpose loader bucket, hydraulic coupler, high-flow hydraulics, enclosed ROPS cab with air conditioning, and 18" rubber tracks. In good condition with good tracks.

2014 WACKER NEUSON Model SW24 Skid Steer Loader, s/n 9042521604, powered by Perkins diesel engine and 2-speed hydrostatic transmission, equipped with 78" general purpose loader bucket, hydraulic coupler, high-flow hydraulics, ROPS canopy, and 12-16.5 tires. In good condition with good tires.

2013 JOHN DEERE Model 320D Skid Steer Loader, s/n 238253, powered by JD diesel engine and hydrostatic transmission, equipped with 72" general purpose loader bucket, hydraulic coupler, high-flow hydraulics, rear counterweights, enclosed ROPS cab, and 12x16.5 tires. In good condition with very good tires.

2012 JOHN DEERE Model 318D Skid Steer Loader, s/n 220072, powered by JD diesel engine and 2-speed hydrostatic transmission, equipped with 72" general purpose loader bucket, hydraulic coupler, standard auxiliary hydraulics, pattern changer, enclosed ROPS cab, and Mitco 33x12 solid cushion tires. In good condition with good tires.

1999 BOBCAT Model 863 Skid Steer Loader, s/n 514427867, powered by Deutz diesel engine and hydrostatic transmission, equipped with 72" general purpose loader bucket, high-flow hydraulics, ROPS canopy, and 12-16.5 tires. In good condition with good tires.

UNUSED 2021 TOPCAT 6' Landscape Rake, with wireless remote • (2) **UNUSED 2021 TROJAN SD1160 Hydraulic Augers**, with 18" and 9" pins • **UNUSED WOLVERINE 72" Hydraulic Tiller** • **UNUSED TMG 8' Dozer Blade**, with steel cutting edge • **UNUSED MEYER Lot Pro LD, 7.5' Snow Plow Blade and Frame**, with power angle • **UNUSED 76" Snow Pusher** • **UNUSED DANUSER SM40 Drop Hammer/Post Pounder** • **BTI TB285 Hydraulic Hammer** • **UNUSED 6' Skeletal Bucket**, with hydraulic thumbs • **WOLVERINE 72" Grapple Bucket**, with hydraulic thumb • **MB TKH 9' Sweeper Broom**, with hydraulic angle • 78" and 67" Tooth Buckets • **UNUSED 48" Fork Attachment** • (2) 70" and 40" Fork Attachments • 44" Fork Attachment • **Bagger Attachment**, with hopper and screw auger



'21 CORMIDI C1200 (LOG LOADER ATTACHMENT SOLD SEPARATELY)



'05 CAT 267B



'05 ASV RC100



'14 WACKER NEUSON SW24



JD 320D AND 318D



'99 BOBCAT 863

RUBBER TIRED AND CRAWLER LOADERS AND TRACTOR LOADER BACKHOES

2002 JOHN DEERE Model 544H Rubber Tired Loader, s/n DW544HX58383B, powered by JD diesel engine and powershift transmission, equipped with general purpose loader bucket with bolt-on cutting edge, enclosed ROPS cab, and 17.5-25 tires. In fair to good condition with fair to good tires.

1996 JOHN DEERE Model 544G Rubber Tired Loader, s/n 544GB555915, powered by JD diesel engine and powershift transmission, equipped with general purpose loader bucket with bolt-on cutting edge, hydraulic coupler, enclosed ROPS cab, and 17.5R25 tires. In fair to good condition with good to very good tires.

Telescopic Boom Attachment (AGS Coupler)

2007 TEREX Model 760B, 4x4 Tractor Loader Extend-A-Hoe, s/n BFM2431, powered by Perkins 93HP diesel engine and shuttle transmission, equipped with general purpose loader bucket with bolt-on cutting edge, front auxiliary hydraulics, Wain Roy 24" digging bucket with Wain Roy hydraulic wrist coupler, 2-stick backhoe controls, enclosed ROPS cab, 12.5/80-18 front and 19.5-24 rear tires. In good condition with good tires.

2006 TEREX Model 760B, 4x4 Tractor Loader Extend-A-Hoe, s/n SMFH441006BFM8175, powered by Perkins diesel engine and shuttle transmission, equipped with general purpose loader bucket with bolt-on cutting edge, front auxiliary hydraulics, Wain Roy 24" digging bucket with Wain Roy hydraulic wrist coupler, 2-stick backhoe controls, enclosed ROPS cab with air conditioning, 12.5/80-18 front and 19.5L24 rear tires. In good condition with good tires.

1968 CATERPILLAR Model 977K Crawler Loader, s/n 11R513, powered by Cat diesel engine, equipped with ROPS canopy and 18" TBG pads. In fair condition. (Not Running; No Torque Converter; Will Sell With Used Torque Converter But Not Installed)



JD 544H AND 544G



TEREX 760B 4X4 EXTEND-A-HOES

MOTOR GRADER, COMPACTION AND MOBILE HAMMER

1999 GALION Model 850B All-Wheel Drive Articulated Motor Grader, s/n G580061U210100, powered by Komatsu diesel engine and powershift transmission, equipped with 13' moldboard, front scarifier (no teeth), auto lube, and 14.00R24 tires. In good condition with good tires.

1995 GALION Model D784 Vibratory Compactor, s/n V530011U452182, powered by Komatsu diesel engine and hydrostatic transmission, equipped with 84" smooth drum, ROPS canopy, and 18-26 tires. In good condition with fair to good tires.

2011 WACKER BRSC2 Articulated Trench Compactor, s/n unknown, Kohler diesel engine, 32" padfoot drums, wireless remote.

WACKER NEUSON RTSC2 Articulated Trench Compactor, s/n unknown, Kohler diesel engine, 32" padfoot drums, wireless remote.



'85 ARROW HJ1250R

WACKER NEUSON RT820 Articulated Trench Compactor, s/n unknown, Lombardini diesel engine, 32" padfoot drums, wireless remote.

1985 ARROW Model HJ1250R Mobile Drop Hammer, s/n 3149, powered by JD diesel engine and direct drive manual transmission, equipped with side shift hammer, cable operated hammer, and 8.75-16.5 tires. In good condition with good tires.



'99 GALION 850B



'95 GALION D784



TRENCH COMPACTORS

FORESTRY MULCHER, HORIZONTAL GRINDER, BRUSH CHIPPERS, AND STUMP GRINDERS

2014 RAYCO Model C100LGP Crawler Forestry Mulcher, s/n 0180614, powered by Kubota diesel engine and hydraulic drive, equipped with Loftness 6' mulcher head, rear winch, enclosed ROPS cab with air conditioning and forestry screens, and 18" TBG pads. In good condition with good undercarriage. (New Bearings on Forestry Mulcher and Drive Belt; New Sprockets)

2000 BANDIT Model 3680 BEAST Portable Horizontal Grinder, s/n 1190, powered by JD 375HP diesel engine and twin disc PTO, equipped with 48" folding discharge conveyor with magnetic head pulley, mounted on tri-axle carrier with 295/75R22.5 tires. In fair to good condition with fair to good tires.

FRANKLIN Articulated Rubber Tired Tractor, s/n unknown, powered by Detroit 4-71 diesel engine, equipped with high pressure hydraulic pump, front loader/attachment boom, (no attachment), and 23.1-26 tires. In fair condition with fair tires. (For Use With Tree Shear/Hot Saw)

2013 VERMEER Model BC1500 Portable Drum Chipper, s/n 1VR2161V3D1005289, powered by Cummins QSB4.5, 130HP diesel engine, equipped with 15" capacity drum chipper, auto feed, 2,000 lb hydraulic winch, rotating discharge chute, pintle tow, and 285/75R16 tires. In good condition with good tires.

2005 BANDIT Model 1590XP Portable Drum Chipper, s/n 4FMUS16105R001337, powered by JD 125HP diesel engine and live hydraulics, equipped with 15" capacity drum chipper, auto feed, hydraulic winch, and 235/80R16 tires. In good condition with good tires. (New Fuel Injection Pump)

2012 RAYCO Model 1220 Portable Drum Chipper, s/n 1R9871318CW210013, powered by Kubota 100HP diesel engine, equipped with 12" capacity drum chipper, auto feed, rotating discharge chute, and 235/80R16 tires. In good condition with good tires.



'14 RAYCO C100LGP



'00 BANDIT 3680 BEAST



'13 VERMEER BC1500



'05 BANDIT 1590XP



'12 RAYCO 1220

1998 BANDIT Model 250XP Portable Disc Chipper, s/n 13281, powered by JD 100HP diesel engine and live hydraulics, equipped with 12" capacity disc chipper, rotating discharge chute, and 2235/85R16 tires. In good condition with very good tires.

1997 BANDIT Model 250XP Portable Disc Chipper, s/n 11758, powered by JD 100HP diesel engine and live hydraulics, equipped with 12" capacity disc chipper, rotating discharge chute, pintle tow, electric brakes, and 245/75R16 tires. In good condition with good tires.

2008 BANDIT 90XP Portable PTO Chipper, s/n 4FMUS11108R006050, equipped with 9" capacity disc chipper, PTO powered, rotating discharge chute, single axle with pintle tow, and electric brakes. In good condition with good tires.

2009 BANDIT Model 90XP PTO Chipper, s/n 4FMUS08069R006076, equipped with 9" capacity disc chipper, PTO powered, rotating discharge chute, 3-point hitch mount, skid mounted. In good condition.

2009 BANDIT Model 90XP PTO Chipper, s/n 4FMUS08099R006072, equipped with 9" capacity disc chipper, PTO powered, rotating discharge chute, 3-point hitch mount, skid mounted. In good condition.

2000 RAYCO Model RG1642M Portable Stump Grinder, s/n 1R93413YW210015, powered by Deutz diesel engine, equipped with hydraulic angle and hydraulic travel, operator protective shield, pintle tow, and 205/75R15 tires. In good condition with good tires.

2003 RAYCO Model RG1635D Portable Stump Grinder, s/n 1R91513173W210009, powered by Deutz diesel engine, equipped with hydraulic angle, hydraulic travel, and pintle tow. In good condition with good tires.



'98 BANDIT 250XP



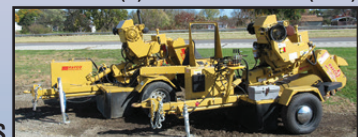
'97 BANDIT 250XP



'08 BANDIT 90XP (PTO)



(2) '09 BANDIT 90XP (PTO)



RAYCO STUMP GRINDERS

FLEX TRACK DUMPERS AND SOIL TEST DRILLS

1999 IHI Model IC30 Flex Track Dumper, s/n CC000506, powered by Isuzu diesel engine and hydrostatic transmission, equipped with 62" dump body with drop sides, rear tailgate, rear and front receiver hitch, and 12.5" rubber tracks. In good condition with good tracks.

1999 YANMAR Model YFW55R Flex Track Dumper, s/n 5143, powered by Yanmar diesel engine and hydrostatic transmission, equipped with 9' dump body and 23" rubber tracks. In fair condition with fair tracks. (Runs - Won't Travel - Bad Planetary)

1996 ACKER Soil Max Crawler Drill, s/n 88540796, powered by Mitsubishi diesel engine, equipped with 20' mast, Rexroth drive head pump, (18) 2" x 10' and (11) 5' x 4" drill stems, mounted on Morooka MST-1500 Flex Track Carrier, s/n 151410. In good condition with good undercarriage.

1991 CME Model 45C Portable Soil Test Drill, s/n 233-014, powered by Wisconsin V-4 gas engine, equipped with 6" and 4" augers, pintle tow, mounted on tandem axle carrier with 8.75R16.5 tires. In fair condition with fair tires.



'99 IHI IC30



'96 ACKER SOIL MAX



'91 CME 45C

ASPHALT PAVING

1997 FORD Model F-800 Single Axle Asphalt Distributor Truck, powered by Cummins 5.9L diesel engine and 5 speed transmission with 2 speed rear, equipped with Rosco Maximizer II 2,000 gallon asphalt tank, 11'9" folding rear spray bar, 33,000 lb GVWR, air brakes, and 11R22.5 tires. In good condition with fair to good tires.



'96 LEEBOY L700R

1996 LEEBOY Model L700R Powerbox Paver, s/n 1734, powered by Kohler gas engine and hydrostatic transmission, equipped with 8' - 12'6" heated vibratory screed, tilt box feed. In good condition with fair to good tires.

2012 BOMAG Model BW138AD-5 Tandem Double Drum Vibratory Roller, s/n C1232, powered by Honda GX390 gas engine with electric start and hydrostatic transmission, equipped with 25.5 smooth drum and water spray system. In excellent condition.



ROSCO MAXIMIZER II
2,000 GALLON



'12 BOMAG BW138AD-5

FORKLIFTS AND AERIAL LIFTS

2012 CASE Model 586H, 6,000 lb, 4WD Rough Terrain Forklift, s/n JJGN580HCC570124, powered by Case diesel engine and shuttle transmission, equipped with 3-stage mast, side shift, 48" forks, FOPS canopy, 19.5L24 front and 12-16.5 rear tires. In good condition with good tires.

2007 YALE Model GDP100M, 9,600 lb Rough Terrain Forklift, s/n E813V02804C, powered by Perkins diesel engine and shuttle transmission, equipped with 159" 2-stage mast, 48" forks, FOPS canopy, 36x11-15 front and 8.25-12 rear tires. In good condition with good tires.

2008 GENIE Model Z45/25, 4x4 Aerial Lift, s/n Z452508A-37785, powered by Deutz diesel engine and hydrostatic transmission, equipped with rotating basket and 355/55D625 tires. In fair to good condition with good tires.

2001 GENIE Model Runabout GR15 Aerial Lift, s/n 130A101008, powered by 24V DC battery, equipped with 15' platform height, 350 lb platform capacity. In fair to good condition.

2014 JLG Model 1930ES Electric Scissors Lift, s/n 200229954, powered by 24V DC battery and hydraulic drive, equipped with 18'8" platform height, 500 lb platform capacity, 6' - 10' extendable platform, and 30" overall width. In good condition.



'12 CASE 586H 6,000 LB



'07 YALE GDP100M
9,600 LB



'08 GENIE Z45-25 4X4

UTILITY TRACTORS AND ATTACHMENTS



'06 KUBOTA L48 4X4

1991 KUBOTA Model L2650GST, 4x4 Utility Tractor, s/n 80458, powered by Kubota 29HP diesel engine and Glide Shift transmission, equipped with 3-point hitch, rear PTO, mid PTO, turf tires, rollbar, 27-8.50-15 front and 355/80D20 rear tires. In good condition with fair to good tires. (New Clutch Package)



'80 FORD 5600

1980 FORD Model 5600, 4x2 Utility Tractor, s/n C641817, powered by Ford 75HP diesel engine and 8 speed transmission with high/low selector, equipped with 3-point hitch, rear PTO, enclosed ROPS cab, 7.5-18 front and 18.4-30 rear tires. In good condition with fair to good tires.

AGRATOR 48" Tiller, PTO powered • 72" York Rake



'91 KUBOTA L2650GST 4X4

SERVICE, BOOM, AND ROLL-OFF TRUCKS

2008 KENWORTH Model T300 Single Axle Service Truck, powered by Cummins PX8, 8.3L, 330HP diesel engine and Allison automatic transmission, equipped with Stellar 10620, 5 ton, 3-section service boom with wireless remote, Miller Trailblazer 250G welder/generator with Onan 20HP gas engine, hydraulic air compressor, Curry 11' service body, 16,000 lb rear axle, 10,000 lb front axle, 26,000 lb GVWR, engine brake, and 11R22.5 tires. In good condition with good tires.

2002 MACK Model CV713 Granite Tandem Axle Boom Truck, powered by Mack E7 350 diesel engine and Allison automatic transmission, equipped with Terex TC-4792, 47,000 lb, 92', 4-section hydraulic boom, s/n 4900398551, 26' - 44' telescopic jib, PAT LMI, Johnson 150 lb weighted hook ball, 20' flatbed, camelback suspension, 12R24.5 tires. In good condition with good tires.

1994 KENWORTH Tandem Axle Knuckleboom Truck, powered by Cat 3406, 14.6L diesel engine and RMX-149P 9 speed transmission, equipped with PM 8522, 7,700 lb knuckleboom, 21' retrieval with 6' hydraulic ramp, hydraulic winch, 2-stage engine brake, aluminum wheels, heated mirrors, cruise control, air conditioning, and 285/75R24.5 tires. In good condition with good tires.

1994 KENWORTH Model W900 Tandem Axle Roll-Off Truck, powered by Cat 3406 diesel engine and Eaton Fuller transmission, equipped with 21' roll-off hoist, 46,000 lb rears, 12,800 lb front axle, 2-stage engine brake, and 11R24.5 tires. In good condition with good tires.

(12) 20 Cubic Yard Dumpster Containers • (5) 30 Cubic Yard Dumpster Containers



'08 KENWORTH T300 SERVICE



'02 MACK CV713
WITH 23.5 TON BOOM



'94 KENWORTH
WITH 7,700 LB KNUCKLEBOOM



'94 KENWORTH W900

DUMP TRUCKS

1993 INTERNATIONAL Model 9400 Tandem Axle Dump Truck, powered by Cummins N14-350E, 350HP diesel engine and Eaton Fuller 9 speed transmission, equipped with 16" steel dump body, air gate, air ride suspension, power divider, Jacobs engine brake, and 295/75R22.5 tires. In good condition with good tires. (New Dump Hoist)



'93 INTERNATIONAL 9400



'05 KENWORTH T300

brakes, cruise control, air conditioning, and 275/80R22.5 tires. In good condition with good tires. (New/Unused Dump Body and Hoist, PTO, and Hydraulic Pump)

2005 KENWORTH Model T300 Single Axle Dump Truck, powered by Cummins ISC300, 300HP diesel engine and Eaton Fuller RT8709B, 9 speed transmission, equipped with UNUSED 10' aluminum dump body, 21,000 lb rear axle, 12,000 lb front axle, 33,000 lb GVWR, air/spring suspension, tow package with air, cruise control, air conditioning, and 275/80R22.5 tires. In good condition with very good tires. (New/Unused Dump Body, Hoist, PTO, and Hydraulic Pump)

2005 KENWORTH Model T300 Single Axle Dump Truck, powered by Cummins ISC300, 300HP diesel engine and Eaton Fuller RT8709B, 9 speed transmission, equipped with 10' aluminum dump body with 2-way gate, 21,000 lb rear axle, 12,000 lb front axle, 33,000 lb GVWR, air/spring suspension, tow package with air, air



'05 KENWORTH T300

1999 FREIGHTLINER Model FL70 Single Axle Crew Cab Dump Truck, powered by Cummins ISC250, 8.3L diesel engine and Allison automatic transmission, equipped with 9' steel dump body, snow plow frame and hoist (no blade), 35,000 lb GVWR, air brakes, aluminum wheels, and 11R22.5 tires. In fair condition with good tires. (Not Running – Electric Problems)

FORESTRY BUCKET TRUCK AND CHIPPER DUMP TRUCKS

2010 FORD Model F-750XL Super Duty Single Axle Forestry Bucket Truck, powered by Cummins ISB240, 240HP diesel engine and 6 speed transmission, equipped with Altec LRV55, 55' aerial lift, s/n 1210CB1319, 400 lb basket with hydraulic tool outlets, Altec 11' chipper dump body, 33,000 lb GVWR, spring suspension, tow package, hydraulic brakes, cruise control, and 11R22.5 tires. In good condition with good to very good tires.



'10 FORD F-750XL WITH ALTEC 55'



'07 FORD F-650XL AND '09 FORD F-550XL

2009 FORD Model F-550XL Super Duty Chipper Dump Truck, powered by Powerstroke 6.4L diesel engine and automatic transmission, equipped with 11' chip dump body, 17,950 lb GVWR, behind cab cross tool compartment, tow package, and 225/70R19.5 tires. In good condition with fair tires.

2007 FORD Model F-650XL Chipper Dump Truck, powered by Cat C7 diesel engine and 6 speed transmission, equipped with Southco 11' chip dump body, 17,500 lb rear axle, 10,000 front axle, 25,999 lb GVWR, behind cab cross tool compartment, (2) underbody toolboxes, tow package with electric, air brakes, cruise control, and 11R22.5 tires. In good condition with good tires.

DIGGER DERRICK, FLATBED, CAB/CHASSIS AND UTILITY TRUCKS

2004 INTERNATIONAL Model 4400 SBA Single Axle Digger Derrick, powered by Int'l DT466 diesel engine and Allison automatic transmission, equipped with Altec DM45T digger derrick, s/n 0304DY0384, 4-section boom 26,790 lb, pole grabs, rear hydraulic outlet, Reading 14'6" line body, front bumper winch, engine brake, differential lock, air brakes, and 11R22.5 tires. In good condition with good tires.



'04 INTERNATIONAL 4400

1999 FORD Model F-800 Single Axle Flatbed Truck, powered by Cummins ISB215, 5.9L, 215HP diesel engine and 6 speed transmission, equipped with 16" flatbed with stake pockets, (2) under body toolboxes, 21,000 lb rear axle, 12,000 lb front axle, 33,000 lb GVWR, spring suspension, air brakes, and 11R22.5 tires. In good condition with good tires.



'99 FORD F-800

1999 FORD Model F-450XL Super Duty, 4x4 Flatbed Truck, powered by Triton V-10 gas engine and 5 speed transmission, equipped with 9'6" flatbed, front bumper winch, behind cab cross tool compartment, tow package, dual rear wheels, and 225/70R19.5 tires. In fair to good condition with fair to good tires.

1990 GMC Topkick Single Axle Cab/Chassis, powered by Cat 3116, 6.6L, 252HP diesel engine and 5 speed transmission with 2 speed rear, equipped with 11'8" frame, spring suspension, air brakes, 32,060 lb GVWR, and 295/75R22.5 tires. In fair to good condition with good tires.

2009 RAM Model 3500 HD Utility Truck, powered by Cummins 6.7L diesel engine and 6 speed transmission, equipped with Stahl 9' enclosed walk-in utility body, tow package with electric, dual rear wheels, air conditioning, and 235/80R17 tires. In good condition with good tires.



'09 RAM 3500 HD

LOWBOY AND TAG ALONG TRAILERS

1971 ROGERS Model T3HPG40DX22-78-15R3, 40 Ton Extendable Tri-Axle Lowboy Trailer, equipped

with ground bearing detachable gooseneck, 22' - 34'6" extendable load deck, 8' width, 9' deck over wheels, flip up 3rd axle, Honda gas pony motor, aluminum wheels, outriggers, chain dogs, and 255/70R22.5 tires. In good condition with good tires. (New 28,000 lb Axles, Bearings, and Brakes)



ROGERS 40 TON EXTENDABLE TRI-AXLE

1995 INTERSTATE Model 40DLA, 20 Ton Tandem Axle Tag-A-Long Trailer, equipped with 18'6" x 8' deck, 5' beavertail, ramps, 47,350 lb GVWR, air brakes, tie downs, and 215/75R17.5 tires. In good condition with good tires.

1993 INTERSTATE Model 40DLA, 20 Ton Tandem Axle Tag-A-Long Trailer, equipped with 19' x 8' deck, 5' beavertail, ramps, air brakes, and 215/75R17.5 tires. In good condition with good tires.



'93 INTERSTATE 40DLA 20 TON

2000 REITNOUER Aluminum Spread Axle Step Deck Trailer, equipped with 37' x 8' lower deck, 10' upper deck, 122" spread axle, air ride suspension, 100,000 lb GVWR, ratchet straps, aluminum wheels, and 255/70R22.5 tires. In good condition with good tires.



'00 REITNOUER SPREAD AXLE

1997 BUTLER Model LT1216 Tandem Axle Tilt Deck Trailer, equipped with 16' x 75" steel deck, pintle tow with electric brakes, 12,000 lb GVWR, and 9.50R16 tires. In good condition with good tires.

2014 BARRETO Single Axle Tilt Deck Trailer, equipped with 79' x 48" wooden deck and 2" ball tow. In good condition.

1986 ALLEGHENY POWER Single Axle Pole Trailer, equipped with 8,000 lb GVWR. In fair condition.