



Please visit our website at
www.hunyady.com



1440 Cowpath Rd. • Hatfield, PA 19440 • 800/233-6898 • Fax: 215/361-9212

NOTICE: The principals of MSG Associates, Inc have decided to completely liquidate their Site Development and Concrete Construction Division assets, however they will continue to offer the finest general contracting services available. All items will be sold at absolute auction to the highest bidder without minimums or reserves.

AUCTIONEERS NOTE: The majority of this equipment has been purchased new by MSG and has been meticulously maintained over the years. Please plan to attend this auction.

LOCATION: The auction will be conducted at the MSG Associates, Inc. shop and office facility located at 545 West Street, Wind Gap, Pennsylvania 18091.

TERMS: Payment in full is required on sale day by cash, certified funds, or check with a bank letter of guarantee. Sample letter of guarantee: "We hereby guarantee the payment of our customer _____ written on his account up to _____ dollars for purchases at your auction sale on March 23, 2006." All guaranteed checks should be made payable to Hunyady Auction Co.

INSPECTION: Items will be available for inspection one week prior to the auction from 8:00 a.m. until 5:00 p.m. (with the exception of Sat. and Sun., March 18 and 19, at which time the site will be closed) or sale day morning from 7:00 a.m.

REMOVAL: After complete payment, all sale items may be removed on sale day as long as the removal activity is not disruptive to the sale and only until 5:00 p.m. Items may also be removed Friday, March 24 and Monday, March 27 through Thursday, March 30, from 8:00 a.m. to 5:00 p.m. All items must be removed no later than Thursday, March 30, at 5:00 p.m.

SALE SITE DIRECTIONS: TRAVELING NORTH OR SOUTH ON PA ROUTE 33: Exit at Bath/Wind Gap (Route 512). Proceed North on Route 512 approximately (1) mile and turn right onto East West Street (Go-Go Bob Motors on right). Continue on East West Street (turns into dirt road then asphalt) approximately (1/2) mile to sale site on right (just beyond Kidney Treatment Center).

AIRPORT INFORMATION: The area is serviced commercially Lehigh Valley International Airport. Rental cars are available.

MOTEL INFORMATION: Wind Gap: Travel Inn (610) 863-4146 • There Are Several Hotels Within (15) Miles of The Sale Site. Depending On Your Direction of Travel The Following Hotels Are Also Available: In Stroudsburg: Days Inn (570) 424-1771 • Best Western Pocono Inn (570) 421-2200; In Easton: Days Inn (610) 253-0546 • Best Western (610) 253-9131; In Allentown: Days Inn (610) 395-3731 • Holiday Inn (610) 391-1000

PA AUCTION LICENSE NO: AY000281

SALE SITE PHONE NUMBER: (610) 863-2000 • SALE SITE FAX NUMBER: (610) 863-0581 (AS OF MARCH 20)

CONSTRUCTION AND BUILDING MATERIALS

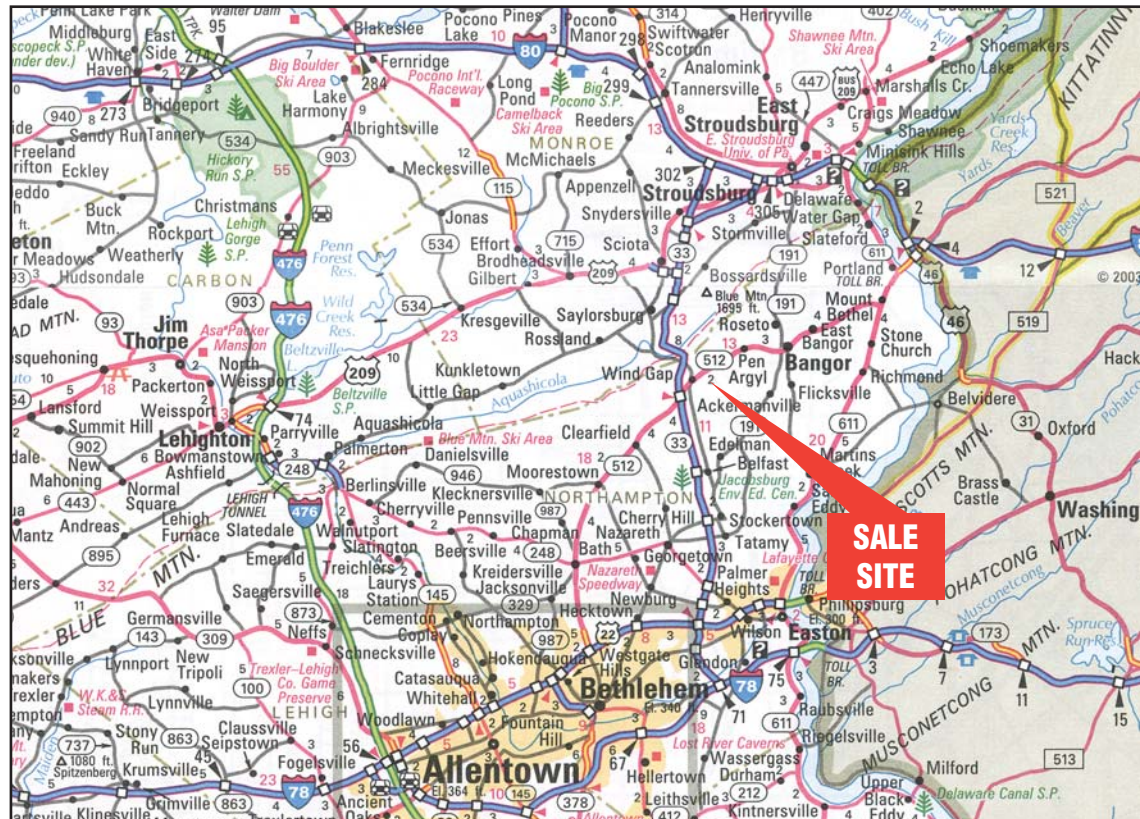
- Concrete Pipe • Concrete Structures • Ductile Iron Pipe • Plastic Pipe • Corrugated Plastic Pipe
- Plywood & Lumber • Plumbing Material
- Electrical Material • ANDERSEN Clad Windows (New-Assorted Sizes) • Doors and Frames (New)
- Door Hardware • Kitchen Sinks (New)
- Steel Cables • Reinforcing Bars • Scrap Steel
- Mirrors (New - In Crates) • Simpson Clips (for trusses) • 40' Aluminum Flag Pole & Tilting Base
- (17) Light Gauge Metal Trusses +/- 29' - 10" long (New)

OFFICE FURNITURE AND EQUIPMENT

- XEROX 2520 Black Line Plans Copy Machine
- HP Design Jet 450-C Color Plotter • Assorted Computers and Monitors • Fax Machines
- Computer Accessories • Office Cabinets • Desks
- File Cabinets • Bookshelves • Tack Boards and Marker Boards • Chairs • Tables • Office Partitions



IR 185CFM



SALE SITE



97 CAT 963B



96 CAT D5HXL



96 CAT IT28F

ABSOLUTE AUCTION

COMPLETE LIQUIDATION

THURSDAY, MARCH 23, 2006 - 9:00AM

'98 CAT 426C AND 416C 4X4

MSG ASSOCIATES, INC.
SITE DEVELOPMENT AND
CONCRETE CONSTRUCTION DIVISIONS

Wind Gap
Pennsylvania
(Allentown/Bethlehem Area)

1440 COWPATH RD. • HATFIELD, PA 19440
 215/361-9099 • Fax: 215/361-9212

PRE-SORTED
 FIRST CLASS MAIL
 US POSTAGE
PAID
 HAVERTOWN, PA
 PERMIT #45



CRAWLER TRACTOR, CRAWLER LOADER, AND TOOL CARRIER

1996 CATERPILLAR Model D5HXL Series II Crawler Tractor, s/n 8RJ05139, powered by Cat 3304 diesel engine and powershift transmission, equipped with 6-way straight blade, ROPS canopy with heat, and drawbar. In good condition with good undercarriage. (Purchased New)

1997 CATERPILLAR Model 963B LGP Crawler Loader, s/n 9BL02014, powered by Cat 3116 diesel engine and hydrostatic transmission, equipped with general purpose loader bucket with teeth, enclosed ROPS cab with light package, and 21.5" DBG pads. In good condition with fair undercarriage. (Purchased as Demo With 500 Hours)

1996 CATERPILLAR Model IT28F Integrated Tool Carrier, s/n 3CL02121, powered by Cat 3116 DIT diesel engine and powershift transmission, equipped with general purpose loader bucket with bolt-on cutting edge, hydraulic quick disconnect, auxiliary hydraulics, enclosed ROPS cab with light package, and 20.5R25 tires. In good condition with fair to good tires. (Purchased New)

54" Quick Disconnect Fork Attachment (IT28F) (To Be Sold Separately)

1998 CATERPILLAR Model 426C, 4x4 Tractor Loader Extend-A-Hoe, s/n 6XN01673, powered by Cat diesel and shuttle transmission, equipped with general purpose loader bucket with bolt-on cutting edge, 24" digging bucket, rear auxiliary hydraulics, enclosed ROPS cab with light package, 12.5/80-18 front and 19.5Lx24 rear tires. In good condition with good tires. (Purchased New)

1998 CATERPILLAR Model 426C, 4x4 Tractor Loader Extend-A-Hoe, s/n 6XN01748, powered by Cat diesel engine and shuttle transmission, equipped with general purpose loader bucket with bolt-on cutting edge, 24" digging bucket, enclosed ROPS cab with light package, 12.5/80-18 front and 19.5Lx24 rear tires. In good condition with fair to good tires. (Purchased New)

1998 CATERPILLAR Model 426C, 4x4 Tractor Loader Extend-A-Hoe, s/n 6XN01890, powered by Cat diesel engine and shuttle transmission, equipped with general purpose loader bucket with bolt-on cutting edge, 24" digging bucket, rear auxiliary hydraulics, enclosed ROPS cab with light package, 12.5/80-18 front and 19.5Lx24 rear tires. In good condition with good tires. (Purchased New)

1998 CATERPILLAR Model 416C, 4x4 Tractor Loader Extend-A-Hoe, s/n 4ZNO7801, powered by Cat diesel engine and shuttle transmission, equipped with general purpose loader bucket with bolt-on cutting edge, 24" digging bucket, enclosed ROPS cab with light package, 12.5/80-18 front and 19.5Lx24 rear tires. In good condition with fair to good tires. (Purchased New)

1998 CATERPILLAR Model 416C, 4x4 Tractor Loader Extend-A-Hoe, s/n 5YN05448, powered by Cat diesel engine and shuttle transmission, equipped with general purpose loader bucket with bolt-on cutting edge, 24" digging bucket, enclosed ROPS cab with light package, 12.5/80-18 front and 19.5Lx24 rear tires. In good condition with good tires. (Purchased New)

Backhoe Attachments: Digging Buckets: 36" • 24" • 18" • (2) 12" • Bucket Forks

TELESCOPIC ROUGH TERRAIN FORKLIFTS AND SKID STEER LOADER

1997 CATERPILLAR Model TH63, 6,000#, 4x4 Telescopic Rough Terrain Forklift, s/n 3NN00674, powered by Cat 3054 diesel engine and powershift transmission, equipped with 41" max lift height, 48" forks, 3-stage telescopic boom, hydraulic quick disconnect with manual pin, 4-wheel steer, chassis tilt, light package, and 13.00x24 tires. In good condition with good tires. (Purchased New)

**'97 CAT TH63****'88 SELLICK MR-737**

1988 SELLICK Model MR-737, 7,000#, 4x4 Telescopic Rough Terrain Forklift, s/n 165058737, powered by Perkins diesel engine and powershift transmission, equipped with 37" maximum lift, 48" forks, 3-stage telescopic boom, 4-wheel steer, chassis tilt, 22,510# operating weight, and 13.00x24 tires. In fair to good condition with fair to good tires.

1996 JCB Model Robot 185 Skid Steer Loader, s/n SLP185SATE0746093, powered by Perkins 4 cylinder diesel engine and hydrostatic transmission, equipped with 66" general purpose loader bucket with bolt-on cutting edge, quick disconnect, auxiliary hydraulics, light package, and 12x16.5 tires. In good condition with good tires. (Purchased New)

**'96 JCB ROBOT 185****GRADALL EXCAVATOR**

1986 GRADALL Model G3WD, 4x4 Rubber Tired Excavator, s/n NP406583, powered by Cummins 6BT-5.9 diesel engine and Morse automatic transmission, equipped with 60" and 58" cleanup buckets, remote control, and 18x22.5 tires. In good condition with fair tires.

Gradall Buckets: 24" Digging • 30" Digging • Trapezoidal

'86 GRADALL G3WD**MOTOR GRADER**

GALION Model T500 Series A Motor Grader, s/n IC-07769, powered by International 6 cylinder diesel engine and powershift transmission, equipped with 12" all hydraulic moldboard, front mounted scarifier, enclosed ROPS cab with light package, and 14.00x24 tires. In good condition with fair to good tires.

GALION T500**COMPACTION EQUIPMENT**

1996 DYNAPAC Model CA251D Vibratory Compactor, s/n 58312923, powered by Cummins 5.9B diesel engine and hydrostatic transmission, equipped with 84" smooth drum, drum drive, ROPS canopy, and 23.1x26 tires. In good condition with good tires. (Purchased New)

1987 DYNAPAC Model CA15D Vibratory Compactor, s/n 2130S17, powered by John Deere 4239DF, 4 cylinder diesel engine and hydrostatic transmission, equipped with 66" smooth drum, drum drive, and 14.9x24 tires. In good condition with good tires.

**'96 DYNAPAC CA251D****'87 DYNAPAC CA15D**

VIBRO-PLUS Model CF43 Tow Behind Vibratory Sheepfoot Compactor, s/n 43CF437, powered by Deutz 3 cylinder diesel engine, equipped with 75" padfoot drum. In good condition.

**VIBRO PLUS CF43**

1996 WACKER Model RT820 Trench Compactor, s/n 750701233, powered by Lombardini 2 cylinder diesel engine and hydrostatic transmission, equipped with 32" split drums and remote control. In good condition. (Purchased New)

TRUCK TRACTOR, LOWBOY, AND 21 TON TAG-A-LONG TRAILERS

1986 FORD Model LTL9000 Tandem Axle Truck Tractor, powered by Cat 3406, 425HP diesel engine and Fuller Roadranger 15 speed transmission, equipped with double frame, wetline, 2-position Jake brake, spring suspension, air slide 5th wheel, aluminum front Budd wheels, (2) 105 gallon aluminum fuel tanks, aluminum headache rack with work lights, and 11R24.5 tires. In good condition with fair to good tires.

**'86 FORD LTL9000**

1989 ROGERS 35 Ton Tandem Axle Lowboy Trailer, equipped with ground bearing hydraulic gooseneck, 8'x22' level deck, 7' open deck over wheels, spring suspension, outriggers, chain dogs, and 255/70R22.5 tires. In good condition with good tires. (Purchased New)

1997 ROGERS 21 Ton Tandem Axle Tag-A-Long Trailer, equipped with 8'6"x19' level deck, 5' beavertail, ramps, air brakes, spring suspension, 49,525 GVWR, chain dogs, and 215/70R17.5 tires. In good condition with good tires. (Purchased New)

DUMP TRUCKS

1989 DIAMOND REO Model Giant C11664DB Tri-Axle Dump Truck, powered by Cummins LTA10, 300HP diesel engine and Eaton Fuller 8L, 10 speed transmission, equipped with Giant 17' steel dump body with coal chute and tarp, airlift 3rd axle, 2-position Jake brake, spring suspension, tow package with air, 425/65R22.5 front, 9.0R20 lift, and 11R22.5 rear tires. In good condition with good tires. (Rebuilt Engine)

**(3) '89-'87 DIAMOND REO'S**

1987 DIAMOND REO Model Giant C11664DB Tri-Axle Dump Truck, powered by Cummins LTA10, 270HP diesel engine and Eaton Fuller RTOF11609B, 9 speed transmission, equipped with Galion 17'6" steel dump body with tarp, airlift 3rd axle, 2-position Jake brake, spring suspension, 11.00R22 front and rear tires and 9.00R20 lift tire. In good condition with fair tires.

1987 DIAMOND REO Model Giant Tri-Axle Dump Truck, powered by Cummins LTA10, 270HP diesel engine and Eaton Fuller RTOF11609B, 9 speed transmission, equipped with Galion 17'6" steel dump body with tarp, double frame, spring suspension, 2-position Jake brake, 11.00R22 tires and 10.00R20 airlift 3rd. In good condition with good tires. (Rebuilt Engine; Suspension; Hoist Cylinder)

1986 FORD Model 8000 Single Axle Dump Truck, powered by Cat 3208 diesel engine and 7 speed transmission, equipped with 10' steel dump body, snowplow, stainless steel hydraulic salt spreader, air brakes, 162" wheelbase, and 12R22.5 tires. In fair to good condition with good tires.

DUMP TRUCKS (CONT.)

1985 FORD Model 8000 Single Axle Dump Truck, powered by Cat 3208 diesel engine and 7 speed transmission, equipped with 10' steel dump body, snowplow, air brakes, rear hydraulics, 162" wheelbase, 315/80R22.5 front and 12R22.5 rear tires. In fair condition with good tires.

1977 INTERNATIONAL Model 1850 Single Axle Dump Truck, powered by International DT466 diesel engine and 4 speed transmission with 2 speed rear, equipped with 10' steel dump body, snowplow frame, and 11.00R20 tires. In poor condition with fair to good tires. (Parts Only)

Truck Accessories: (3) Snow Plows (Tri-Axes) • (2) Snow Plows (Single Axes) • (3) Salt Spreaders • Assorted Tire Chains • Assorted Truck Tires

LUBE AND FUEL TRUCKS

1991 CHEVROLET Model 3500HD Mechanics/Lube Truck, powered by V-8 gas engine and automatic transmission, equipped with Reading 9" mechanics lube body with enclosed lube body, gas powered air compressor, Miller Bluestar model 180K, 180 amp welder/5,000 watt generator, powered by Kohler 12.5HP gas engine, (3) product tanks with pneumatic pumps and hose reels, oxygen/acetylene torch set, dual rear wheels, AM/FM stereo, and 225/70R19.5 tires. In good condition with good tires. (Purchased New)

**'91 CHEVY 3500HD**

1980 INTERNATIONAL Model 1724 Single Axle Fuel Truck, powered by V-8 gas engine and 5 speed transmission with 2 speed rear, equipped with Atlas 1,400 gallon 2-compartment steel tank with pump, meter, and (2) hose reels, air brakes, rear work lights, 19,000# rear axle, 28,000# GVWR, and 10.00x20 tires. In fair to good condition with fair to good tires. (Fuel Body and Cab In Good Condition - Bad Engine)

STAKE BODY AND UTILITY TRUCKS

1986 MACK/RENAULT Model MS200P Single Axle Cab Over Stake Body Truck, powered by Renault diesel engine and 5 speed transmission, equipped with 24' flatbed, stake sides, lift gate, spring suspension, ratchet tie-downs, and 11R22.5 tires. In good condition with good tires

**'86 MACK MS200P****'99 CHEVY 4X4'S**

1999 CHEVROLET Model 3500, 4x4 Utility Truck, powered by V-8 gas engine and 5 speed transmission, equipped with Stahl 11' walk-in utility body, side boxes, rear work lights, dual rear wheels, AM/FM stereo, pintle hitch, and LT225/75R16 tires. In good condition with fair tires. (Purchased New)

1999 CHEVROLET Model 3500, 4x4 Utility Truck, powered by V-8 gas engine and 5 speed transmission, equipped with Stahl 11' walk-in utility body, side boxes, rear work lights, dual rear wheels, AM/FM stereo, pintle hitch, and LT225/75R16 tires. In good condition with fair tires. (Purchased New)

1987 CHEVROLET Model C30 Stake Body Dump Truck, powered by V-8 gas engine and 4 speed transmission, equipped with 12'6" flatbed, dual rear wheels, and P245/75R16 tires. In fair condition with fair tires.

PICKUP TRUCKS AND SPORT UTILITY VEHICLES

1999 CHEVROLET Model 1500 Silverado 4x4 Extended Cab Pickup Truck, powered by 5.3 liter V-8 gas engine and automatic transmission, equipped with 6' bed with cross toolbox, aluminum running boards, tow package, air conditioning, full power package, and 265/75R16 tires. In good condition with good tires. (Purchased New)

1997 CHEVROLET Model 1500 Cheyenne, 4x4 Pickup Truck, powered by 5.0 liter, V-8 gas engine and automatic transmission, equipped with 8' bed with cross toolbox, snowplow, air conditioning, snowplow, tow hitch, AM/FM stereo, and LT245/75R16 tires. In fair to good condition with good tires. (Engine and Transmission New Jasper Rebuilds) (Purchased New)

1997 CHEVROLET Model 1500, 4x4 Pickup Truck, powered by 5.0 liter, V-8 gas engine and automatic transmission, equipped with 8' bed with cross toolbox and side boxes, snowplow, air conditioning, tow hitch, AM/FM stereo, and LT245/75R16 tires. In fair to good condition with good tires. (Purchased New)

**CHEVY 4X4'S**

1989 CHEVROLET Model 1500 Silverado 4x4 Pickup Truck, powered by V-8 gas engine and automatic transmission, equipped with 8' bed, side toolboxes, Fisher snowplow, air conditioning, power windows and locks, and 265/75R16 tiers. In fair condition with fair tires. (Purchased New)

1997 CHEVROLET Model 1500 Cheyenne Pickup Truck, powered by V-8 gas engine and automatic transmission, equipped with 8' bed with cross tool box, AM/FM stereo, air conditioning, tow hitch, and P235/75R15 tires. In fair to good condition with good tires. (Purchased New)

1991 CHEVROLET Model 1500 W/T Pickup Truck, powered by 4.3 liter, V-6 gas engine and 5 speed transmission, equipped with 8' bed, AM/FM stereo, and 235/75R15 tires. In fair condition with fair tires. (Purchased New)

PICKUP TRUCKS AND SPORT UTILITY VEHICLES (CONT.)

2000 CHEVROLET Model S10 Pickup Truck, powered by 2.2 liter, 4 cylinder gas engine and automatic transmission, equipped with 6' bed, AM/FM stereo, and 195/60R15 tires. In good condition with good tires. (Purchased New)

1998 CHEVROLET Model Tahoe 4x4 Sport Utility Vehicle, powered by V-8 gas engine and automatic transmission, equipped with leather interior, full power package, air conditioning, AM/FM CD, tow package, and 245/75R16 tires. In good condition with good tires. (Purchased New)

**'98 CHEVY TAHOE 4X4****'94 JEEP 4X4**

1994 JEEP Model Grand Cherokee Limited 4x4 Sport Utility Vehicle, powered by 4.0 liter, 6 cylinder gas engine and automatic transmission, loaded, 225/75R16 tires. In good condition with fair tires. (Purchased New)

1986 CHEVROLET Model S10 Pickup Truck, automatic transmission. (Not Running)

1988 CHEVROLET Model 1500, 4x4 Pickup Truck, automatic transmission. (Not Running)

1991 CHEVROLET Model 1500 Scottsdale 4x4 Pickup Truck, V-8 gas engine and automatic transmission (Steering Column Removed) (Parts Only)

RECREATIONAL VEHICLE AND BASS BOAT

1987 COACHMEN Model 310MB Classic Recreational Vehicle, powered by Ford V-8 gas engine and automatic transmission, equipped with gas range, microwave, sink, refrigerator/freezer, bathroom with shower, full size bed, dinette, couch, and generator. In fair condition with fair to good tires. (Purchased As Demo)

1998 BASSTENDER 11' Bass Boat, equipped with bilge pump, navigation lights, live well, electric trolling motor, 3-seating positions, and trailer. In very good condition. (Purchased New)

FLATBED, OFFICE TRAILERS, AND VAN STORAGE TRAILERS

1976 TRAILMOBILE 42' Flatbed Trailer, equipped with bulkhead, sliding tandems, ratchet tie-downs, and 11R22.5 tires. In good condition with good tires.

10'x50' Tandem Axle Office Trailer • **8'x32' Tandem Axle Office Trailer** • **8'x16' Single Axle Office Trailer** • **8'x28' Single Axle Combo Office/Storage** • (3) **40' Tandem Axle Van Storage Trailers** • (2) **8'x20' Overseas Containers**

TRENCH BOXES AND AIR COMPRESSOR

SAFETY-BOX 8'x16' Trench Box, with 36", 30", and 24" spreaders • **SAFETY-BOX 10 Cubic Yard Gravel Box** • **Aluminum Trench Shield**

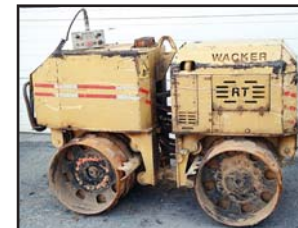
1986 INGERSOLL RAND Model P-185A-W-JD, 185CFM Portable Air Compressor, s/n 157597U86957, powered by John Deere diesel engine, equipped with P205/75R15 tires. In fair to good condition with fair tires.

CONCRETE EQUIPMENT

NIPPON Gas Powered Rebar Bender/Cutter • **BARTELL TS-78 Ride-On Power Trowel** • (3) **BARTELL B446 Power Trowels** • **BARTELL B436 Power Trowel** • **BARTELL B 424 Power Trowel/Edger** • **EDCO 36" Electric Power Trowel** • **EDCO 2EC-15B Grinder/Surfer** • **SOFCUT GS400 Concrete Saw** • **SOFCUT 270 Electric Concrete Saw** • **CORE CUT CC1800 Gas Powered Concrete Saw** • **EDCO 14" Gas Powered Walk-Behind Saw** • **TARGET MCC40H 8" Gas Powered Walk Behind Saw** • **PRIME MOVER Power Buggy** • (2) **14' VIBRA-STRIKE Lindley Float/Screen** • (2) **MORRISON Screeds** • (2) **Bull Floats and Extensions** • (3) **WYCO Concrete Vibrators** • **WACKER Concrete Vibrators** • **BLAZER Electric Core Drill Rig** • **GAR BRO Concrete Bucket** • (30) **22" Concrete Curb Forms** • (19) **22" Radius Curb Forms** • (30) **5" Sidewalk Forms** • **Miscellaneous Wooden Forms** • **Miscellaneous Concrete Blankets** • **Assorted Finishing Blades and Floats**

CONTRACTORS TOOLS, UTILITY EQUIPMENT, AND MISCELLANEOUS

MUELLER B-100 Tapping Machine • **RICE DP-2B Hydrostatic Test Pump** • **WACKER Vibratory Plate Compactor** • **WACKER BS500 Foot Compactor** • **MIKASA MT65H Jet Compactor** • **MIKASA MT75HS Foot Compactor** • (2) **INGERSOLL RAND Paving Breakers** • **JET 60# Rock Drill** • (3) **EMGLO Air Compressors** • (2) **MILLER AEAD-200LE Gas Powered Welders** • **HOBART AGH-27 Mig Welder** • **WINCO Gas Powered Generator** • (2) **HONDA Gas Powered Generators** • (2) **HONDA 5000 Watt Generators** • **STOW DP80, 3" Diaphragm Pump** • **STOW 1-1/2" Submersible Pump** • **STOW 1" Submersible Pump** • (2) **WAYNE 1-1/2" Pumps** • **WACKER 2" Submersible Pump** • **FLYGT 2" Submersible Pump** • **HONDA 2" Trash Pump** • **HONDA 3" Trash Pump** • **16", 12", and 8" Pipe Grabs** • **MACDONALD DM11S Demo-Pick Hoe Attachment** • **Assorted WACKER & STOW Foot Compactors (Parts Only)** • (3) **Table Saws** • (2) **Fuel Oil Fired Unit Heaters** • (5) **STONE 150,000 BTU Silent Gas Heaters** • **STAR MAN Platform Lift for Forklift** • **JENNY Power Washer** • **Sand Blaster** • (24) **100# Bags of Sandblasting Sand** • **Approximately (90) 12'x8' Pieces of Security Fence & Stands** • **Assorted Ladders** • **Scaffolding** • **Construction Lamps** • **Construction Carts** • (2) **Pickup Caps** • **Assorted Pickup Tool Boxes** • **Pickup Mounted Fuel Tank** • **225 Gallon Fuel Tanks** • **550 Gallon Fuel Tank, with electric pump**

**'96 WACKER RT820**