

CRAWLER TRACTORS



'97 Cat D8R



'90 Case 850D

1997 CATERPILLAR Model D8R Crawler Tractor, s/n 7XM01460, powered by Cat 3406C diesel engine and powershift transmission, equipped with semi U blade with single tilt, Cat 8SS 4-barrel ripper, s/n 1HF03696, with pin pull, differential steering, enclosed ROPS cab with air conditioning, and 24" extreme service SBG pads. In good condition with good undercarriage. (Undercarriage Replaced Approx. 2,000 Hours Ago) (In-Frame Rebuilt Engine Approx. 1,000 Hours Ago)

1999 CATERPILLAR Model D5CXL Series III Hystat Crawler Tractor, s/n 7PS00894, powered by Cat 3046 diesel engine and hydrostatic transmission, equipped with 6-way straight blade, tow hitch, enclosed ROPS cab with air conditioning, and 20" SBG pads. In good condition with fair to good undercarriage. (Purchased New)



'99 Cat D5CXL III

1990 CATERPILLAR Model 850D Crawler Tractor, s/n JAK0002639, powered by Case Turbo diesel engine and hi-lo reversing transmission, equipped with 6-way hydraulic straight blade, ROPS canopy with sweeps, 9'10" long track crawlers, and 18" SBG pads. In good condition with good undercarriage. (DY)

HYDRAULIC EXCAVATORS AND ATTACHMENTS



'99 Cat 330BL

1997 CATERPILLAR Model 330BL Hydraulic Excavator, s/n 6DR01193, powered by Cat 3306B diesel engine and hydraulic drive, equipped with 11' dipper stick, 48" digging bucket with ripper pocket, air conditioning, 16'6" crawlers, and 33.5" TBG pads. In good condition with fair undercarriage. (Out Of Frame Complete Engine Rebuild - In-House) (Final Drives Rebuilt) (Main Hydraulic Pump Rebuilt)



'97 Cat 330BL

2004 DAEWOO Model Solar 300LC-V Hydraulic Excavator, s/n 200404202356, powered by Daewoo DE12T diesel engine and hydraulic drive, equipped with 10" dipper stick, 42" digging bucket, 16'3" crawlers, and 31.5" TBG pads. In good condition with good undercarriage. (All Points Capital)

'04 Daewoo Solar 300LC-V

1991 CATERPILLAR Model 225D-LC Hydraulic Excavator, s/n 2SJ00897, powered by Cat 3208T Turbo diesel engine and hydraulic drive, equipped with 10' dipper stick, 40" digging bucket with H&H thumb attachment, 14'6" crawlers, and 30" TBG pads. In fair to good condition with fair undercarriage.



'91 Cat 225D-LC

1990 CATERPILLAR Model 225D-LC Hydraulic Excavator, s/n 2SJ00467, powered by Cat 3208 Turbo diesel engine and hydraulic drive, equipped with 10' dipper stick, 30" digging bucket with side cutters, hydraulic beyond, 14'6" crawlers with rock guards, and 30" TBG pads. In good condition with good undercarriage.



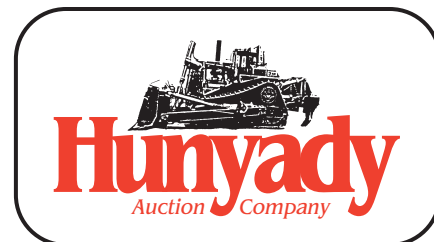
'90 Cat 225D-LC

1988 CATERPILLAR Model 225B-LC Hydraulic Excavator, s/n 2ZD01032, powered by Cat 3208 (remfg.) diesel engine and hydraulic drive, equipped with 10' dipper stick, hydraulic beyond, stiff arm bracket, 48" digging bucket, vandalism kit, 14'6" crawlers, and 30" TBG pads. In fair to good condition with fair to good undercarriage.



'88 Cat 225B-LC and '98 Tramac BRV32

1998 TRAMAC Model BRV32 Hydraulic Hammer, s/n 115727. In good condition. (Fits Cat 225BL) (Rebuilt June '07)
ROCKRAM Model 778ERS Hydraulic Hammer, s/n 53942 (Fits Cat 225) (Parts Only)
Buckets: Cat 330: 44" and 30" Digging Buckets • Cat 225: 40", 32", and 30" Digging Buckets
(5) Bottom and (4) Carrier Rollers (Cat 330)



1440 Cowpath Rd. • Hatfield, PA 19440 • 800-233-6898 • Fax: 215-361-9212

NOTICE: After completing several large projects, Paer Ahnert Enterprises, Inc., a long time and respected developer in the Pocono area, has decided to liquidate the majority of their dirt moving and excavation spread. A few items have been consigned by local contractors and financial institutions. Everything will positively sell to the highest bidder regardless of price!

LOCATION: The auction will be held at Paer Ahnert's yard located at 23 Mt. Nebo Road, Marshalls Creek, Pennsylvania 18335
INSPECTION: Items will be available for inspection beginning Monday, November 12, 8:00 a.m. to 5:00 p.m. or sale day morning from 7:00 a.m. to 9:00 a.m.

TERMS: Payment in full is required on sale day by cash, certified funds, or check with a bank letter of guarantee. Sample letter of guarantee: "We hereby guarantee the payment of our customer _____ written on his account up to _____ dollars for purchases at your auction sale on November 16, 2007." All guaranteed checks should be made payable to Hunyady Auction Co. **Never A Buyer's Premium!**

SALES TAX: Since this contractor is selling items not normally sold in the course of his business, the Commonwealth of Pennsylvania considers this an isolated sale and does not require the auction company to collect sales tax. However, the Commonwealth does require the collection of sales tax on items being sold on behalf of lending institutions, equipment rental companies and dealers, etc. These items will be so noted in the sale day catalog.

REMOVAL: After complete payment, all sale items may be removed on sale day as long as the removal activity is not disruptive to the sale and only until 5:00 p.m. Items may also be removed Saturday, November 17, Monday, November 19, and Tuesday, November 20, from 8:00 a.m. until 5:00 p.m. All items must be removed no later than Tuesday, November 20th, at 5:00 p.m.

SALE SITE DIRECTIONS: FROM INTERSTATE 80: Exit #309 (Marshalls Creek Routes 447 and 209 North), at end of ramp proceed straight onto Route 209 North. Continue (3.3) miles and turn right at traffic light. Continuing on Route 209 North for an additional (1.1) miles and turn right onto Mt. Nebo Road (immediately after Wendy's) Proceed to sale site on left.

**SALE SITE PHONE NUMBER
(570) 223-7634**

AIRPORT INFORMATION: The area is serviced both commercially and privately through Lehigh Valley International Airport. Rental cars are available.

MOTEL INFORMATION: The Shannon Inn (570) 424-1951 • *Marshalls Creek is located in the heart of the Pocono Mountains. There are numerous resorts and hotels. Please plan on attending and spending a day or two in the Poconos.*

PA AUCTION LICENSE NO: AY000281

TAG-A-LONG TRAILERS

1992 EAGER BEAVER Model 20HAL, 20 Ton Tandem Axle Tag-A-Long Trailer, equipped with 8'6"x19'6" level deck, 5' beavertail, 4'6" ramps, chain dogs, air brakes, 47,900# GVWR, and 215/75R17.5 tires. In good condition with fair tires.
1989 CENTERVILLE Model 105A, 20 Ton Tandem Axle Tag-A-Long Trailer, equipped with 8'x18' level deck, 4' beavertail, 5' ramps, chain dogs, 48,205# GVWR, and 8.25R15 tires. In good condition with good tires. (Organski)



ABSOLUTE AUCTION
PROJECT COMPLETION
Friday, November 16, 2007 - 9:00 A.M.

03 INGERSOLL RAND ECM580

PAER AHNERT ENTERPRISES, INC.
Marshalls Creek, PA (Stroudsburg Area)



'97 Cat D8R



(2) OF (3) CAT D300E



'07 SCHWING BPA500



1440 COWPATH RD. • HATFIELD, PA 19440
215/361-9099 • Fax: 215/361-9212



PRE-SORTED
FIRST CLASS MAIL
US POSTAGE
PAID
HAVERTOWN, PA
PERMIT #45

