

**PULL TRACTOR AND PULL SCRAPERS**



'04 JOHN DEERE 9420

**#220 2004 JOHN DEERE Model 9420 Articulated Pull Tractor**, s/n RW9420E020662, powered by John Deere 6125, 12.5 liter, 425HP diesel engine and automatic/powershift transmission, equipped with rear hydraulic bank, front counterweights, dual wheels, implement management system, 48 GPM hydraulic system, hitch slip command, enclosed ROPS cab with heat and air conditioning, light package, air seats, drawbar, and 710/70R42 tires. In good condition with good tires. **(3,103 Original Hours)**

**#221 2003 JOHN DEERE Model 1810E Hydraulic Pull Scraper**, s/n T1810E001099, equipped with 18.3 cubic yard heaped capacity, 10' cut, hydraulic ejector blades, rear hitch and hydraulic circuit, and 20.5R25 tires. In good condition with good to very good tires.

**#222 2003 JOHN DEERE Model 1810E Hydraulic Pull Scraper**, s/n T1810E001105, equipped with 18.3 cubic yard heaped capacity, 10' cut, hydraulic ejector blades, rear hitch and hydraulic circuit, and 20.5R25 tires. In good condition with good to very good tires.

**MOTOR GRADER AND MOTOR SCRAPERS**

**#425 2006 JOHN DEERE Model 872D AWD Motor Grader**, s/n DW872DX606099, powered by John Deere diesel engine and 8 speed automatic transmission, equipped with all wheel drive, 14' hydraulic moldboard, additional 16' moldboard blade, rear hydraulic scarifier, enclosed ROPS cab with heat and air conditioning, Topcon GPS control ready (no instruments), light package, and 550/65R25 tires. In very good condition with very good tires. **(1,718 Original Hours)**

**#211 1993 CATERPILLAR Model 627E Tandem Motor Scraper**, s/n 7CG00878, powered by (2) Cat 3306 diesel engine and 8 speed powershift transmission, equipped with cushion hitch with hydraulic bail, rear push block, enclosed cab with heat and air conditioning, and 33.25R29 tires. In good condition with good tires. (1,863 Hours On Rear Engine & Transmission) (2,352 Hours On Front Engine & Transmission) (2,352 Hours On Hitch Rebuild)



'06 JOHN DEERE 872D



(2) '93 CAT 627E

**#206 1977 CATERPILLAR Model 627BP Tandem Motor Scraper**, s/n 15S921, powered by (2) Cat 3306 diesel engines and 8 speed powershift transmission, equipped with cushion hitch with hydraulic bail, rear push block, enclosed cab, and 29.5-35 tires. In fair condition with fair to good tires.

**#207 1977 CATERPILLAR Model 627BP Tandem Motor Scraper**, s/n 15S926, powered by (2) Cat 3306 diesel engines and 8 speed powershift transmission, equipped with cushion hitch with hydraulic bail, rear push block, enclosed cab, and 29.5-35 tires. In fair condition with good tires. (721 Hours On Front Engine Rebuild) (1,721 Hours On Rear Engine Rebuild) (3,721 Hours On Front Transmission Rebuild) (1,721 Hours On All Brakes & Drums Replacement)



(1) OF (2) CAT 627BP

**COMPACTORS**



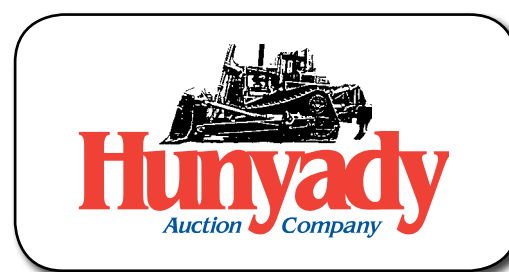
'00 IR SD115D

**#264 2000 INGERSOLL-RAND Model SD-115D ProPac Vibratory Compactor**, s/n 164990, powered by Cummins 5.9L diesel engine and hydrostatic transmission, equipped with 84" smooth drum and 23.1-26 tires. In good condition with good tires. (2,489 Hours On Engine Replacement)

**#269 2000 INGERSOLL-RAND Model SD-70D ProPac Vibratory Compactor**, s/n 165974, powered by Cummins B3.9-C diesel engine and hydrostatic transmission, equipped with 66" smooth drum and ROPS canopy. In good condition with good tires.



'00 IR SD70D



**NOTICE:** Pillari Bros. have determined specific equipment to be surplus to their needs entering into the 2010 construction season. Pillari, however, will continue to offer the finest site development and heavy construction services throughout New Jersey and surrounding states. **All equipment is owned by Pillari and will sell to the highest bidder, regardless of price and without Buyer's Premium!**

**LOCATION:** The auction will be held at Pillari Bros. shop and office facility at 65 Squankum Yellowbrook Road, Farmingdale, NJ 07727  
**TERMS:** Payment in full is required on sale day by cash, certified funds, or check with a bank letter of guarantee. "We hereby guarantee the payment of our customer written on his account up to \$ \_\_\_\_\_ dollars for purchases at your auction sale on March 25, 2010." All guaranteed checks should be made payable to Hunyady Auction Co. **Never A Buyer's Premium!**

**FINANCING:** Financing is available; please contact Susan at Hunyady Auction Company for complete details.  
**SALES TAX:** Since this contractor is selling items not normally sold in the course of his business, the State of New Jersey considers this an isolated sale and does not require the auction company to collect sales tax.

**INSPECTION:** Items will be available for inspection beginning one week prior to the auction and continuing through sale day, from 8:00 a.m. until 5:00 p.m. The site will be closed Saturday and Sunday, March 20 and 21. Items may also be inspected sale day morning beginning at 7:00 a.m.

**REMOVAL:** After complete payment, all sale items may be removed on sale day as long as the removal activity is not disruptive to the sale and only until 5:00 p.m. Items may also be removed Friday, March 26, and Monday, March 29 thru Thursday, April 1, 2010 from 8:00 a.m. until 5:00 p.m. All items must be removed no later than Thursday, April 1, 2010 at 5:00 p.m.

**SALE SITE DIRECTIONS: (PLEASE REFER TO "REMOTE PARKING" FOR SALE DAY ATTENDANCE) FROM NEW JERSEY TURNPIKE:** Exit #7A and proceed to Interstate 195 East. Follow I-195 East (25 miles) to exit #31B. Follow exit ramp around (stay in left lane) cross over I-195 and proceed to traffic light. Turn left onto Squankum Yellowbrook road and continue (0.3) miles to sale site on left.

**REMOTE PARKING DIRECTIONS: SALE DAY:** Due to unavailable parking at the auction site, we have secured a remote parking facility with shuttle buses running continuously beginning at 6:30AM. DIRECTIONS: Follow above directions. Upon approaching sale site on left, continue on Squankum Yellowbrook Road thru traffic light and past school, (1.7 miles) to Cross Point Baptist Church on right.

**AIRPORT INFORMATION:** Private aviation is serviced (3.0 miles) from sale site at Monmouth Executive Airport (KBLM) FBO: (732) 938-4800 • Commercial travel is serviced either through Philadelphia International Airport (77 miles) or Newark International Airport (51 miles)

**MOTEL INFORMATION:** Courtyard Marriott 1302 Campus Parkway, Wall Township, NJ (732) 919-2780 • EconoLodge 5309 SR 33 & SR 34, Farmingdale, NJ (732) 938-3110 • Days Inn Neptune, 3310 Highway 33, Neptune, NJ (732) 643-8888

**(BEGINNING MARCH 15TH) SALE SITE PHONE: (732) 938-4550 Ext. 41 SALE SITE FAX: (732) 751-2770**

Phone calls prior to March 15th will be taken at Hunyady corporate office at (215) 361-9099

**PICKUP TRUCKS AND SPORT UTILITY VEHICLE**

**#54 2000 FORD Model F-150, 4x4 Pickup Truck**, powered by 4.2L, gas engine and automatic transmission, equipped with 8' bed, fuel tank with electric pump, side and cross aluminum toolboxes, air conditioning, AM/FM stereo, and 265/75R16 tires. In good condition with good tires.



'00 FORD F-150

**#55 2000 FORD Model F-150, 4x4 Pickup Truck**, powered by 4.2L gas engine and automatic transmission, equipped with 8' bed, cross toolbox, air conditioning, AM/FM stereo, and 255/70R16 tires. In good condition with good tires.

**#58 2000 CHEVROLET Model 1500, 4x4 Pickup Truck**, powered by 4.8L, V-8 gas engine and automatic transmission, equipped with 8' bed, aluminum toolbox, tow package, air conditioning, AM/FM cassette player, and 245/75R16 tires. In good condition with good tires.



'00 FORD F-150 AND '00 CHEVY 1500

**#59 2000 CHEVROLET Model 1500, 4x4 Pickup Truck**, powered by 4.3L, gas engine and automatic transmission, equipped with 8' bed, tow package, air conditioning, AM/FM cassette player, and 245/75R16 tires. In fair condition with fair to good tires.



'99 FORD EXPEDITION 4X4

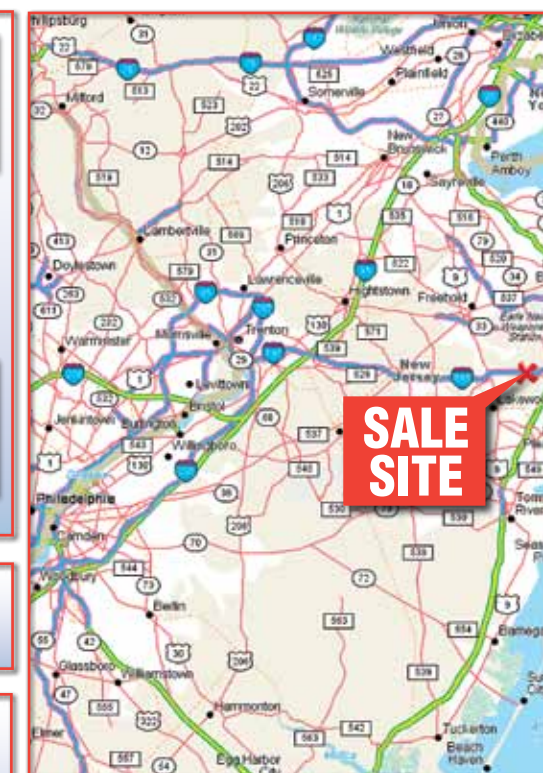
**#49 1999 FORD Model Expedition Eddie Bauer Edition 4x4 Sport Utility Vehicle**, powered by Triton 5.4L, V-8 gas engine and automatic transmission, equipped with tow package, aluminum wheels, luggage rack, running boards, keyless entry, power package, cruise control, leather seats, AM/FM cassette player, and 265/70R17 tires. In good condition with good tires.

**TAG-A-LONG AND OFFICE TRAILERS**

**1996 EAGER BEAVER Model 12HDB, 12 Ton Tandem Axle Tag-A-Long Trailer**, equipped with 8'x19' level deck, 5' beavertail, 4'6" ramps, chain dogs, electric brakes, and 9-14.5 tires. In fair condition with fair tires.  
**12'x48" Office Trailer**, with (2) offices, HVAC. In good condition.

**CONTRACTORS TOOLS AND EQUIPMENT**

(2) 11 Cubic Yard Stone Boxes • 8' Bed, with Reading enclosed utility cap with material rack. In good to very good condition. (F-350) • **WESTERN** 10' Snow Plow, with power angle and frame • 7 Fiberglass Pickup Cap • 15KW Skid Mounted Generator, s/n Unknown, powered by Lister 3 cylinder diesel engine • (2) **STONE** Foot Compactors • (2) **MBW** Foot Compactors • 3" Gas Powered Diaphragm Pump • **CH&E** 3" Gas Powered Diaphragm Pump • **POWER GUARD** W40, 4000 Watt Gas Powered Generator • **HONDA** 2500 Watt Gas Powered Generator • (2) **WINCO** 3000 Watt Gas powered Generators • (2) 12 Volt Blowers



**65 SQUANKUM YELLOWBROOK ROAD, FARMINGDALE, NJ 07727**



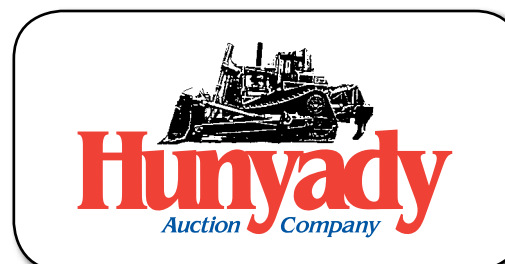
'98 CAT D8R AND '88 CAT D8N



'04 JD 9420 WITH (2) '03 JD 1810E



(2) '98 KOMATSU WA380-3L



1440 COWPATH RD. • HATFIELD, PA 19440  
 215/361-9099 • Fax: 215/361-9212



PRE-SORTED  
 FIRST CLASS MAIL  
 US POSTAGE  
**PAID**  
 HAVERTOWN, PA  
 PERMIT #45

