

ABSOLUTE AUCTION

COMPLETE LIQUIDATION



WEDNESDAY, MARCH 28, 2012 - 9:00AM
Matawan, New Jersey

'94 WIRTGEN 1900DC
(2,784 ORIGINAL HOURS)



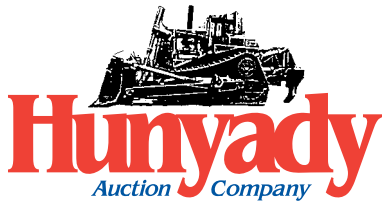
'00 AND '99 MACK RD688SX



'02 CAT 950G II (2,239 ORIGINAL HOURS)



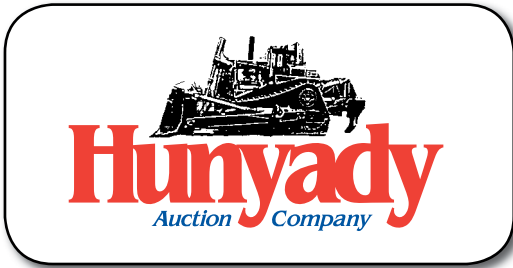
'02 CAT 345BL II AND '04 CAT 322CL



1440 COWPATH RD. • HATFIELD, PA 19440
215/361-9099 • Fax: 215/361-9212
www.hunyady.com

PRE-SORTED
FIRST CLASS MAIL
US POSTAGE
PAID
HAVERTOWN, PA
PERMIT #45





Notice: After (61) successful years in the construction business, Mr. Ace Manzo has sadly passed away. Mrs. Carmella Manzo has decided to completely liquidate the equipment assets of Ace Manzo, Inc. at auction. Everything will positively sell to the highest bidder regardless of price!

Location: The auction will be held at Ace Manzo Inc.'s facility at 436 Charles Street, Matawan, NJ 07747.

Auctioneer's Note: Due to the large number of items included in this auction, it may be necessary to sell with (2) auctioneers.

Remote Parking Sale Day/Shuttle Bus Service: The sale day parking area will be located at Saint Clement Parish, 172 Freneau Avenue, Matawan, NJ 07747. **Directions to sale day parking:** From the intersection of Routes 34 and 79 in Matawan, NJ-Proceed on Route 79 South (Main Street) (0.9) Miles to Saint Clement Parish on right. Shuttle buses will run continuously between the remote parking area and sale site.

Sale Site Directions: TRAVELING ON NJ TURNPIKE: Exit #9 - Proceed to Route 18 South and follow for (5) miles. Take the Route 516 East/Matawan Exit. Continue on route 516 East (6.4) miles to Charles Street and turn right. Proceed (0.3) miles to sale site.

FROM THE INTERSECTION OF ROUTE 34 AND ROUTE 79 in Matawan, NJ: Proceed on Route 79 South (Main Street) (0.3) miles to traffic light at New Brunswick Avenue (Route 516 West) and turn right. Continue on New Brunswick Avenue (0.3) miles to Charles Street and turn left. Proceed (0.3) miles to sale site.

Terms: Payment in full is required on sale day by cash, certified funds, or check with a bank letter of guarantee. Sample letter of guarantee: "We hereby guarantee the payment of our customer _____ written on his account up to _____ dollars for purchases at your auction sale on March 28, 2012." All guaranteed checks should be made payable to Hunyady Auction Co.

Sales Tax: Since this contractor is selling items not normally sold in the course of his business, the State of New Jersey considers this an isolated sale and does not require the auction company to collect sales tax.

Financing: Financing is available, please contact Susan (215) 361-9099 at the auction company for details.

Inspection: Items will be available for inspection beginning one week prior to the auction from 8:00AM to 5:00PM. The site will be closed Saturday and Sunday, March 24th and 25th

Removal: After complete payment, all sale items may be removed on sale day as long as the removal activity is not disruptive to the sale and only until 5:00 p.m. Items may also be removed Thursday and Friday, March 29th and 30th and Monday thru Wednesday, April 2nd thru April 4th, from 8:00 a.m. to 5:00 p.m. All items must be removed no later than Wednesday, April 4, 2012 at 5:00 p.m.

Airport Information: The area is serviced commercially and privately through Newark International Airport. Rental cars are available.

Motel Information: Holiday Inn, 2870 Highway 35, Hazlet, NJ 07730 (732) 888-2000 • Best Western Hazlet Inn, 3215 Highway 35, Hazlet, NJ 07730 (732) 888-2800

Sale Site Phone (Beginning Monday, March 19th): (267) 446-3808 • Sale Site Fax: (888) 859-8958

PIPE TOOLS



MUELLER CL12/25-1, 4" to 12" Wet Pipe Tap/Valve Insertion Machine, 12" maximum auto feed, 25" maximum travel, gas motor and air drive motor. (Will Be Sold With All Accessories and Additional Parts Machine) • MUELLER B-101 Pipe Tap • MUELLER B-4 Pipe Tap • (2) MUELLER 21 Pipe Taps • (3) MUELLER Electric Power Heads • HYDRA-STOP Pipe Tap and Line Stop Set • MCELROY Pit Bull #14 Electric Fusion Machine, with accessories • (1) 6", (2) 4", and (4) 2" Pneumatic Underground Piercing Tools • (50) 2.5" to 20" Pneumatic Pipe Test Plugs • RICE Hydrostatic Test Pump • (2) NB PRODUCTS Air Test Control Panels • (10) CHERNE Mandrills

MUELLER CL12-25-1
AGL Pipe Laser • AGL 2000 Pipe Laser • AGL SL-5 Pipe Laser • (2) AGL S332 Pipe Lasers • HELIFLAUX GA-52C Pipe Locator • FISHER M-Scope Pipe and Cable Locator • (4) AGL BD1000V, 12 Volt Manhole Blowers • (2) HOMELITE Gas Powered Manhole Ventilators • (2) Rescue Winches with tripods • (4) Hydraulic Soil Pipe Cutters • Manual Soil Pipe Cutters • SUPERIOR/CARDINAL Pipe Lifter • Assorted Pipe Saddles • FERNCO Fittings • Water Shutoffs • POLLARD Fire Hydrant Flush Kit • Water Meters

MISCELLANEOUS

LARGE QUANTITY of Ductile Iron Pipe, Pipe Fittings, PVC, & Plastic Pipe • Concrete Batch Plant, 8' hopper, silo, 7'x9' square mobile feed hopper with 18-1/2"x22-1/2" feed conveyor. Poor • BIBEAU 11" Steel Dump Body • Fuel Tanks • Water Storage Tanks • (1 Set) HI-WAY Loadmeter 20,000# Portable Truck Scales • WESTINGHOUSE Transfer Switch • (770SF) Symons Handset Panel Forms-In Fair to Poor Condition • VERMEER TS-44T, 44" Tree Spade • MKT 9B3 Pneumatic Pile Hammer • Assorted Attachments and Parts Too Numerous To List



HYDRAULIC EXCAVATORS AND ATTACHMENTS



2002 CAT 345BL Series II, s/n AGS01107, Cat 3176 dsl, 11' dipper stick, Cat 34" digging bucket, Cat hydraulic quick coupler, enclosed cab with AC, 17'8" crawlers, and 35.5" TBG pads. In good to very good condition with good undercarriage. **(02,936 Original Hours) (Purchased New)**



BUCYRUS-ERIE 400H, s/n 139949, Detroit 8V-92T dsl, 12' dipper stick, 50" digging bucket, enclosed cab with AC, 19'2" manual extendable crawlers, and 42" smooth pads. In good condition with good undercarriage. **(Purchased New)**

'02 CAT 345BL II

2004 CAT 322CL, s/n HEK00476, Cat 3126 dsl, 10' dipper stick, Cat 36" digging bucket, Cat hydraulic quick coupler, enclosed cab with AC, 15'3" crawlers, and 31.5" TBG pads. In good to very good condition with good undercarriage. **(02,505 Original Hours) (Purchased New)**



BUCYRUS ERIE 400H

1997 CAT 311B, s/n 8HR00579, Cat dsl, 7'6" dipper stick, 36" digging bucket, hydraulic quick coupler, hydraulic beyond, enclosed cab with light package, 11" crawlers, and 19.5" TBG pads. In good condition with fair to good undercarriage.



'97 CAT 311B

1988 CAT E120B, s/n 7NF00757, Cat/Mitsubishi dsl, 8'3" dipper stick, 24" digging bucket, enclosed cab, 11'5" crawlers, and 19.5" TBG pads. In good condition with fair to poor undercarriage.



'04 CAT 322CL

2007 CAT 314CL CR, s/n PCA01586, Cat 3064 dsl, 9'6" dipper stick, Cat 20" digging bucket, Cat hydraulic quick coupler, hydraulic beyond, 8'6" backfill blade, vandalism shields, 12'3" crawlers, and 23.5" TBG pads. In very good condition with very good undercarriage. **(00,575 Original Hours) (Purchased New)**



1990 CAT E110B, s/n 8MF00114, Cat 3114T dsl, 9' dipper stick, Cat 30" digging bucket, Hill hydraulic quick coupler, hydraulic beyond, enclosed cab, 10'10" crawlers, and 23.5" TBG pads. In good condition with fair to good undercarriage. **(Meter Reads 8,959 Hours) (Purchased New)**

'07 CAT 314CL CR

1987 CAT 235B, s/n 7WC00839, Cat 3306 dsl, 9' dipper stick, 28" digging bucket, stiff arm bracket, enclosed cab with light package, 16'6" crawlers, and 36" TBG pads. In good condition with fair to good undercarriage. **(Purchased New)**



'90 CAT E110B

2007 VOLVO EC55B, s/n V00036653, Volvo dsl, 5' dipper stick, 24" digging bucket, hydraulic beyond, swing boom, manual quick coupler, 76" backfill blade, enclosed ROPS cab with AC and light package, 8' crawlers, and 16" rubber pads. In good condition with good undercarriage. **(00,997 Original Hours) (Purchased New)**



'07 VOLVO EC55B



'87 CAT 235B

CAT 225LU, s/n 76U04848, Cat 3304DI dsl, 10' dipper stick, 44" digging bucket, enclosed cab with light package, 14'6" crawlers, and 30" TBG pads. In good condition with good undercarriage. **(Purchased New)**

1986 JOHN DEERE 70, s/n S006542, JD dsl, 7' dipper stick, 22" digging bucket, enclosed ROPS cab, 8'9" crawlers, and 18" TBG pads. In good condition with fair to good undercarriage. **(Purchased New)**

1990 KOMATSU PC30-7, s/n 19862, dsl, 4'6" dipper stick, 16" digging bucket, 60" backfill blade, canopy, and 12"x80" rubber tracks. In fair condition with fair undercarriage.
Cat 345: 44" Digging Bucket • Cat 322 Digging Buckets: Cat 24"; 28" (missing teeth) • Cat 235: 12' Dipper Stick; **PEMBERTON** 20314, 30" Concrete Pulverizer; 44" and 34" Digging Buckets • Cat 225 Digging Buckets: Esco 30"; 30" and 24" • Cat 311, E120B, E110B: Hydraulic Demo Hammer; (3) Hydraulic Plate Compactors; 24" Digging Bucket • Volvo EC55B: 36" Digging Bucket • JD 70: 36" Cleanup Bucket • Komatsu PC30: 36" Cleanup Bucket • Bucyrus Erie 400H: 44" and 32" Digging Buckets • Additional Attachments: **PEMBERTON** 24" Concrete Pulverizer (BE 300) • (2) Hydraulic Demo Hammers (One Fits Older Cat 225) • 44" & Esco 32" Digging Buckets (BE 350) • 46" Digging Bucket (BE 40H)

CAT 225LU

RUBBER TIRED LOADERS

2002 CAT 950G Series II, s/n AYL00184, Cat 3126 dsl and powershift trans, Cat hydraulic side dump bucket with bolt-on cutting edge, Cat hydraulic quick coupler, auxiliary hydraulics, enclosed ROPS cab with AC, and 23.5R25 tires. In good to very good condition with good to very good tires. **(2,239 Original Hours)**

• CAT 60" Fork Attachment (To Be Sold Separately)
1988 CAT 950E, s/n 22Z03529, Cat 3304 dsl and powershift trans, Hewitt hydraulic side dump bucket, ROPS over enclosed cab, and 23.5x25 tires. In good condition with fair to good tires. **(Purchased New)**



'88 CAT 950E

CAT 966D, s/n 99Y01914, Cat 3306 dsl and powershift trans, general purpose loader bucket with weld-on teeth, ROPS over enclosed cab, and 26.5x25 tires. In good condition with good tires.

CAT 950, s/n 81J8755, Cat 3304 dsl and powershift trans, hydraulic side dump bucket with bolt-on cutting edge, enclosed cab, and 20.5x25 tires. In good condition with good tires. **(Purchased New)**



CAT 966D

CRAWLER TRACTORS AND CRAWLER LOADER



'85 CAT D6D

1985 CAT D6D, s/n 04X10589, Cat 3306 dsl and powershift trans, straight blade with tilt, ROPS canopy, and 24" SBG pads. In good condition with good undercarriage.



'04 CAT D3GXL



CAT 955L

2004 CAT D3G XL, s/n JMH00937, Cat 3046 dsl and hydrostatic trans, 6-way straight blade, ROPS canopy with heat, tow hitch, and 16" SBG pads. In good condition with good undercarriage. **JOHN DEERE 450C**, s/n 361286T, JD dsl and powershift trans, 6-way straight blade, ROPS canopy, and 16" SBG pads. In good condition with good undercarriage. **(Purchased New)** **CAT 955L**, s/n 85J5372, Cat dsl and powershift trans, hydraulic side dump bucket, 3rd valve, ROPS canopy, tow hitch, and 15" TBG pads. In good condition with good undercarriage. **(Purchased New)**

MILLING MACHINES, PAVERS, AND ROAD WIDENER

1994 WIRTGEN 1900DC Milling Machine, s/n 5.19.0075, Mercedes Benz dsl and hydraulic drive, 84" cutting drum with carbide teeth, 24"x6" feed conveyor, 30"x26" discharge conveyor, remotes, slope/grade controls, dual operator station, and (4) 10.5" TBG pads x 5'3" crawlers. In good condition with good undercarriage. **(02,784 Original Hours)** **(Purchased New)** • **WIRTGEN 48" Combo Cutting Head Extension (To Be Sold Separately)**

1990 WIRTGEN 1000VC Milling Machine, s/n 2.10.0337, Deutz dsl and hydraulic drive, 42" milling drum with carbide teeth, 16"x22" discharge conveyor, and solid tires. In fair condition with fair tires. **(Purchased New)**



'90 WIRTGEN 1000VC



'97 BARBER GREENE BG225B



'99 MIDLAND WA

1997 BARBER GREENE BG225B Crawler Paver, s/n 6YK00594, Cat 3054 dsl and hydraulic drive, Extend-A-Mat 8-16B 8'-16" vibratory screed, s/n 3GL00252, 10'6" crawlers, and 14" street pads. In good condition with good undercarriage. **(00,788 Original Hours)** **(Purchased New)** **BLAW KNOX PF-65 Rubber Tired Paver**, s/n 0498016, Ford gas and direct drive, 8'-12" vibratory screed, and 14.00x20 tires. In poor condition with poor tires.

1999 MIDLAND WA Road Widener, s/n 293, Deutz dsl, 10' hopper, 24" belt, 17" and 68" extensions, hydraulic lift on slope cylinder, and quick coupler hook-up. In good condition.

HORIZONTAL BORING MACHINES AND AUGER FLYGHT



'87 AMERICAN AUGER 42-500GHDS

1987 AMERICAN AUGER 42-500GHDS Horizontal Boring Machine, s/n 42-5006HDS068734, Deutz dsl and direct drive trans, 4" hex and 30' track. In good condition. **(Purchased New)** **RICHMOND Horizontal Boring Machine**, Wisconsin gas and 3 spd trans, 2-1/4" hex and 30' track. In fair condition.

Auger Inventory (Conditions Vary From Good to Poor): 4" Hex: 40' of 42" • 30' of 36" • 30' of 24" • 3" Hex: 6' of 42" • 52' of 36" • 12' of 32" • 46' of 28" • 4' of 26" • 96' of 24" • 6' of 20" • 14' of 18" • 92' of 16" • 218' of 6"; 2-1/4" Hex: 8' of 28" • 16' of 18" • 16' of 16" • 52' of 12" • 24' of 10"; **Casing:** 29' of 48" • 25' of 42" • 24' of 40" • 30' of 36" • 25' of 34" • 127' of 30" • 166' of 24" • 15' of 20" • 28' of 18"; Assorted Boring Bits, Hardware, and Accessories

END DUMP



1987 VOLVO A-35, 35 Ton 6x6, s/n A35V1018BMB, Volvo dsl and powershift trans, enclosed cab, and 26.5x25 tires. In good condition with good tires.

'87 VOLVO A-35

TRACTOR LOADER BACKHOE AND SKID STEER LOADER

1987 JOHN DEERE 410C 4x4 Extend-A-Hoe, s/n 739230, JD dsl and shuttle trans, general purpose loader bucket with bolt-on cutting edge, 24" digging bucket, 12-16.5 front and 21x24 rear tires. In good condition with fair to good tires. **(Purchased New)**



'99 BOBCAT 863F



'87 JD 410C 4X4 EXTEND-A-HOE

1999 BOBCAT 863F, s/n 514429003, Deutz dsl and hydrostatic trans, 72" general purpose loader bucket, high flow auxiliary hydraulics, manual quick disconnect, and 12x16.5 tires. In good condition with good tires.

18" Hydraulic Milling Head (Skid Steer)

VIBRATORY ROLLERS



'94 BOMAG BW120AD-2

1994 **BOMAG BW120AD-2**, s/n 101170500980, Deutz dsl and hydrostatic trans, 47" smooth drums. In good condition. **(Purchased New)** • **1988 BOMAG BW130AD**, s/n 101650000493, Deutz dsl and hydrostatic trans, 50.5" smooth drums. In good condition • **1988 IR DD35**, s/n 8161-S, Deutz dsl and hydrostatic trans, 40" smooth drums. In good condition • **HYSTER B14**, s/n B146C2145E, dsl and hydrostatic trans, 49" smooth drums. In fair condition.



'88 BOMAG BW130AD

BROOMS



(2) LAYMOR BROOMS

1999 LAYMOR 8HC, s/n 26686-002, Kubota dsl and hydrostatic trans, 92" broom with power angle, water system, tow hitch, canopy with light package, and 205-75R14 tires. In good condition with good tires.

1997 LAYMOR 8B, s/n 25666-001, Kubota dsl and hydrostatic trans, 92" broom with power angle, water system, tow hitch, and canopy. In good condition with good tires.

FORD 3400, s/n 2265130, Ford dsl and direct drive trans, 70" hydraulic power angle broom, rear water tank, and 3-point hitch. In fair condition with fair tires.

TRENCHER, ROCK SAW, MOTOR GRADER, AND HYDRO HAMMER

BARBER GREENE TA30 Crawler Wheel Trencher, s/n T830X117, gas, 20" digging buckets, side conveyor. In fair to good condition with fair undercarriage. **(Purchased New)** • **1985 VERMEER T-600D Crawler Rock Saw**, s/n 1VRE170D6F1002370, Detroit dsl, CRC31 7'6" carbide tip cutting wheel. In fair to poor condition with fair to poor undercarriage • **CAT 212 Motor Grader**, s/n 91729, Cat dsl with gas pony motor and direct drive trans, 10' moldboard, scarifier. In fair to poor condition with fair to poor tires • **ARROW D500 Portable Hydro Hammer**, s/n 5509, Detroit dsl and direct drive trans. In poor condition with fair to poor tires.

PORTABLE CRUSHER

CEDARAPIDS Commander 443, Cat D337E, dsl and Twin Disc converter, 9'x11' 3-cubic yard hopper, 30"x26" feed conveyor, 42"x10' 2-deck vibratory screen with 3" and 2" screens, Cedarapids 10x36 jaw crusher, s/n 22357, 30"x18" double roll crusher, 20"x30" discharge conveyor, 24"x60" channel stacking conveyor, s/n 6024S1748, (2) new and (2) used 36" jaw dies, and 9.00x20 tires. In fair condition with good tires.

UTILITY TRACTORS AND ATTACHMENTS



INTERNATIONAL 3688, s/n 2530002U001976, IH dsl and powershift trans, (2) hydraulic outlets, 3-point hitch, PTO, enclosed cab with AC and light package, front counterweight, drawbar, 16.00x16 front and 18.4x38 rear tires. In good condition with good tires.

JOHN DEERE 3020, s/n 11T66471, JD dsl and powershift trans, (2) hydraulic outlets, 3-point hitch, PTO, roll bar, light package, 7.50x16 front and 13.6x38 rear tires. In good condition with good tires.

INT'L 3688 AND JD 3020

FORD 8N, Ford gas and 3 spd direct drive trans, 3-point hitch, PTO, 4x19 front and 9x32 rear tires. In good condition with good tires.

Utility Tractor Attachments: **WOODS** Cadet 84, 84" Brush Hog • **NEW HOLLAND** Manure Spreader • 20' 2-Gang Disc Harrow • 5' 2-Gang Disc Harrow • JD 20X7B, 12' Grain Drill • **EPOKE** TMK10 Fertilizer Spreader • 72" Pulverizer/Seeder • 8' Portable Lime Spreader • 4-Bottom Plow • 3-Bottom Plow

PORTABLE GENERATORS AND AIR COMPRESSORS

(2) **2006 MULTIQUIP Whisperwatt DCA125USJ Portable Generators**, s/n 8500683 (**00,476 Original Hours**) and s/n 8500692 (**01,168 Original Hours**), JD dsl, 125KVA/100KW 240/480 volt 3-phase and 72KVA/72KW 240/120 volt single phase, sound suppression, mounted on tandem axle trailer with 225/75R15 tires. In very good condition with very good tires.

(Purchased New)

2003 MULTIQUIP Whisperwatt DCA255SIUC

Portable Generator, s/n 7107107, Isuzu QD-60, dsl, 25KVA/14.4KW, 3-phase/single phase, mounted on single axle trailer. In good condition with good tires.

1997 AMIDA OG25-1-3T, 38KVA/25KW Portable Generator, s/n 9708-42586, Isuzu dsl. In fair to good condition with fair to good tires.

Kohler 3050ZJ61, 22KW Portable Generator, s/n 359687, JD dsl

SULLIVAN PALATEK D210QJJD, 210CFM Portable Air Compressor, s/n 24978, JD dsl. In good (Purchased New)

• **1987 MULTIQUIP 180CFM Portable Air Compressor**, s/n 87526, Isuzu dsl. In good condition • **SULLIVAN**

185CFM Portable Air Compressor, s/n 211359, JD dsl. In fair condition • **WORTHINGTON 750** Portable Rotary

Screw Air Compressor, s/n 848-047, Detroit dsl. In fair condition.



(2) '06 MQ 100KW



(2) OF (4) PORTABLE AIR COMPRESSORS

TANDEM AXLE DUMP TRUCKS

2000 MACK RD688SX, Mack E7-400, 400HP dsl and Maxitorque T2180, 18 spd trans, Beau-Roc 15' steel dump body with electric tarp and air gate, single chute, 55,000# rears, camelback suspension, 2-stage brake, cruise control, AC, and 11.00R24 tires. In good condition with good tires. (**114,665 Original Miles**)

1999 MACK RD688SX, Mack E7-400, 400HP dsl and Maxitorque 12 spd trans, Beau-Roc 15' steel dump body with electric tarp and air gate, single chute, 55,000# rears, camelback suspension, 2-stage brake, cruise control, AC, and 11.00R24 tires. In good condition with good tires. (**145,187 Original Miles**)

1985 AUTOCAR/VOLVO/WHITE, Cat 3406DI dsl and Eaton Fuller Roadranger 8LL 10 spd trans, Benson 15' aluminum dump body, Hendrickson spring over walking beam suspension, 2-stage brake, AC, 70,000# GVWR, and 11.00R22 tires. In fair to good condition with good tires.

1979 AUTOCAR DC9364B, Cat 3408 dsl and Fuller Roadranger RTO 9509, 9 spd trans, 15' aluminum dump body with manual gate, Hendrickson spring over walking beam suspension, 2-stage brake, 70,000# GVWR, and 11.00R22 tires. In fair condition with fair to good tires.



(1) OF (2) MACK RD688SX

WATER AND SWEEPER TRUCKS



1985 MACK MS300P Cab Over Water Truck, Mack dsl and 6 spd trans, Tech Weld 1,900 gallon steel tank with Honda 2 cylinder gas, rear and curbside air actuated spray heads, under body toolboxes, and 11R22.5 tires. In good condition with good tires.

1985 FORD F-700 Sweeper Truck, V-8 gas and auto trans, Elgin sweeper, Cummins 3.9L dsl, 8' curb brooms, vac unit, in cab control, dual steering, AC, and 10.00R20 tires. In fair condition with poor tires.

'85 MACK MS300P

CHIPPER AND TRENCH COMPACTOR

MORBARK 2400, JD dsl and Twin Disc clutch, 20" feed drum, manual rotating chute, and 12x16.5 tires. In good condition with fair tires. (**394 Original Hours**) (Purchased New) • **2006 RAMMAX P33/24**, s/n 1537302, Hatz dsl and hydrostatic trans, 33" split padfoot drums with cleaners, and wireless remote. In good to very good condition. (**198 Original Hours**)



MORBARK 2400



'06 RAMMAX P33-24

MESSAGE BOARD, LIGHT PLANT, ARROW BOARDS, AND SAFETY ACCESSORIES



PORTABLE SOLAR MESSAGE BOARD

1995 PRECISION SOLAR CONTROLS INC. SMC-1000

Portable Solar Message Board, s/n 01040, CPU-1M computer, hydraulic raise and lower. In very good condition with very good tires.

SPECIALTY LIGHTING BTK64MH Portable Light Plant, s/n 98-4-5865, Kubota dsl, manual raise and lower, (4) lights. In good condition with good tires.

ARROW MASTER WAAW15SB-STD Portable Solar Arrow Board.

Fair to Good • **HI-VU INC.** TM4825-D Portable Arrow Board, dsl. Fair to Good • **BEMIS & SONS** 15 Light Arrow Board. Poor

• Portable Arrow Board. Poor • (Approx 50) Safety Barrels with rubber stands • (Approx 50) Assorted Road Signs with stands • Safety Cones and Barrels with stands • (6 Rolls) Safety Fence

• (200) Safety Road Signs • (12) Sign Stands



SPECIALTY LIGHTING BTK64MH

TRUCK TRACTORS AND LOWBOY TRAILERS

2000 MACK CH613 Tandem Axle, Mack E7-460, 460HP dsl and Maxitorque T2180, 18 spd trans, 44,000# rears, 12,000# front axle, air ride suspension, wetline, airslide 5th wheel, full aluminum fenders, aluminum wheels, double frame, 2 stage brake, AC, cruise controls, and 11F24.5 tires. In good condition with good tires. (**068,454 Original Miles**) (Purchased New)

2003 ROGERS CR55PL98/51/25/102/3XAR, 55 Ton Tri-Axle, non ground bearing detachable gooseneck, wetline, 8'6"x25' level deck, 12' over axles, air ride suspension, airlift rear axle, outriggers and chain dogs, 132,380# GVWR, and 275/70R22.5 tires. In good condition with good to very good tires.

1999 ROGERS CR50PL86/51/24/102/3XAR, 50 Ton Tri-Axle, non ground bearing detachable gooseneck, wetline, 8'6"x24' level deck, 11' over axles, air ride suspension, airlift rear axle, 122,350# GVWR, outriggers and chain dogs, and 255/70R27.5 tires. In good condition with good tires.

(Purchased New)

1988 MACK DM886SX Tandem Axle, Mack dsl and Maxitorque extended range trans, 55,000# rears, wetline, double frame, camelback suspension, 5th wheel, brake, AC, heated mirrors, and 11F24.5 tires. In fair to good condition with fair to good tires.

1959 ROGERS TUHPG75D4, 75 Ton Tandem Axle, ground bearing detachable gooseneck, wetline, 10'x25' drop side deck, 10' deck over axles, beam suspension, chain dogs, and 14.00x24 tires. In fair condition with fair tires.



'00 MACK CH613 AND '99 ROGERS 50 TON



'03 ROGERS 55 TON

SINGLE AXLE DUMP AND STAKE BODY TRUCKS



'06 FORD F-550

8' steel dump body, tow package, and 7.50x16LT tires. In fair to poor condition with fair to poor tires.

1999 FORD F-450 Single Axle Stake Body Truck, Powerstroke dsl and auto trans, 12' flatbed body, removable stake sides, wooden deck, tow package, AC, and 225/70R19.5 tires. In good condition with good tires. (**079,127 Original Miles**)

2006 FORD F-550, Powerstroke Turbo 6.0L dsl and auto trans, Rugby 11'6" steel dump body, manual tarp, tow package, dual rear wheels, AC, 17,950 GVWR, AC, and 225/70R19.5 tires. In good condition with good tires. (**020,955 Original Miles**) (Purchased New)

1986 GMC Sierra 3500, 5.7L V-8 gas and 4 spd trans, 8' steel dump body, 76" snowplow, tow package, AC, and 7.50x16LT tires. In fair to poor condition with fair to poor tires.

1986 FORD F-350, 5.9L V-8 gas and 4 spd trans, 8' steel dump body, tow package, and 7.50x16LT tires.



'99 FORD F-450

UTILITY, VAN BODY, AND BUCKET TRUCKS



'04 FORD F-350XL

2004 FORD F-350XL Super Duty Extended Cab Utility Truck, 5.4L V-8 gas and auto trans, 9' open utility body, 50 gallon fuel tank with pump, tow package, cruise control, and AC. In good condition with good tires. **(083,072 Original Miles) (Purchased New)**

2004 FORD F-550 XL Van Body Truck, Powerstroke 7.3L dsl and auto trans, 16' aluminum van body, curbside door, roll-up rear door, lift gate, tow package, 17,500# GVWR, AC, and 225/70R19.5 tires. In fair to good condition with fair to good tires.



1993 FORD F Super Duty Bucket Truck, 7.3L dsl and auto trans, Versalift TEL79G1-DOM, 29' working height, 300# single man basket, insulated boom upper, Baker 11' utility body, Onan generator, dual fuel tanks, AC, and LT205/85R16 tires. In fair to good condition with good tires.

'04 FORD F-550XL

PASSENGER VANS AND PICKUP TRUCKS



(1) OF (2) FORD E-350XL VANS

2007 FORD E-350XL 12-Passenger Van, 5.4L V-8 gas and auto trans, power windows and locks, curbside door, AC, CD player, and LT225/75R16 tires. In very good condition with good tires. **(054,154 Original Miles)**

2003 FORD E-350XL 15-Passenger Van, 5.4L V-8 gas and auto trans, power windows and locks, cruise control, AC, and LT245/75R16 tires. In good condition with good tires.

(095,733 Original Miles) (Purchased New)

1999 FORD F-250 Super Duty Pickup Truck, Triton 5.4L V-8 gas and auto trans. In good condition • **1997 FORD F-250HD XLT Extended Cab Pickup Truck**, V-8 gas and auto trans. In good condition • **1994 FORD F-250XL Pickup Truck**, 5.8L V-8 gas and auto trans. In fair condition • **1992 FORD F-250XLT Extended Cab Pickup Truck**, 5.8L V-8 gas and auto trans. In fair condition • **(3) 1992 FORD F-250 Custom Pickup Trucks** • **1986 & 1985 FORD F-250 Pickup Trucks**

VAN AND OFFICE TRAILERS

1963 FRUEHAUF SSVV-F2-40, 40' T/A Stainless Steel Storage Van Trailer • **STRICK 38' Storage Van Trailer** • **1950 GRAMM 8**, 32' T/A Storage Van Trailer • **FRUEHAUF SS530 Stainless Steel Van Trailer** • **ABC TRAILER/CLIFF INDUSTRIES F1044**, 40' Office Trailer • **32' Office Trailer** • **28' Office Trailer**

PUMPS AND ACCESSORIES



(6) OF (30) 3 INCH SUBMERSIBLE PUMPS

FLYHGT 3127180, 4" Electric Submersible, starter box • (30) 3" & (1) 2" Electric Submersible, starter boxes. In good and very good condition • (2) 4" & (2) 3" Trash • (2) 3" & (1) 2" Centrifugal • 3" Pneumatic Diaphragm • Skid Mounted 8" Well Point, Detroit 2 cylinder dsl. In fair to poor condition • **SYKES 6"** Portable Water, Lister dsl • (50) PVC and Aluminum Well Point Transfer Pipe, with couplers and well points • (50) 12" and 15" Steel Dewatering Pipe • Suction and Discharge Hose

ROLL-OFF, ROLL-BACK, AND FLATBED TRUCKS

1984 MACK DM686S Tandem Axle Roll-Off Truck, Mack EM6-285, 285HP dsl and Maxitorque extended range 10 spd trans, 22' roll-off hoist, flatbed body, double frame, camelback suspension, 70,000# GVWR, 12.00R20 front and 11.00x20 rear tires. In fair to good condition with good tires • Roll-Off Containers: 30 Cu Yd • 20 Cu Yd • 15 Cu Yd (All in fair to poor condition) • **1968 FORD Custom Cab Roll-Back Truck**, 5 spd trans with 2-spd rear, 20' steel roll-back body, winch, PTO, and 9.00x20 tires. In poor condition with poor tires • **1988 FORD F-700 Flatbed Truck**, V-8 gas and 5 spd trans with 2-spd rear, 21' flatbed, wooden deck, and 10.00x20 tires. In fair to good condition with good tires.

MISCELLANEOUS TRUCKS

FORD F-800 Dump/Attenuator Truck, V-8 gas and auto trans, 9' steel dump body, Energy Absorption attenuator, s/n MD1093, Vermac solar arrow board. In fair condition • **1976 INTERNATIONAL 1600 Pump Truck**, V-8 gas and 4 spd trans, 1,560 gallon steel tank, Ford gas. In fair to poor condition. • **1961 FORD F-800 Distributor Truck**, 8 cylinder gas and 5 spd trans, Littleford distributor. In poor condition • **1977 CHEVROLET 30 Step Van**, V-8 gas and auto trans, Cherne poly metric sealing system, 14' van body, air compressor, control panels. In fair to poor condition • **1979 INTERNATIONAL 5000 Tandem Axle Concrete Mixer**, 6 cylinder dsl and Eaton Fuller RTO-95 8LL 10 spd trans, Challenge rear discharge mixer. In fair condition • **1992 FORD F-250 Cab and Chassis**, 7.3L dsl and auto trans. In fair to good condition.

CRANES AND TRUCK MOUNTED DRILLS

BUCYRUS ERIE 22B 30-T Truck Crane, s/n 128456, Waukesha gas, main and auxiliary hoists, 85' of pin connected angle boom, CCC 6x4 carrier, Int'l gas and 5 spd + 3 spd trans. In fair condition • **BUCYRUS ERIE 22B Crawler Crane**, s/n 119926, Cat dsl, main and auxiliary hoists, 55' bolt together angle boom. In poor condition • **CALDWELD 150-4 Drill**, s/n CT465, Chrysler gas, 3" - 4-1/2"x22' Kelly bar, 30' mast, 3" hex, Chevy S/A Truck, V-8 gas. In poor condition. (Additional 3.5"x25' Kelly Bar) • **Mobile 352 Drill**, s/n 620634, Ford gas, (7) 4" flygts, (7) 6" flygts, Chevy 50 Drilling Truck, gas and 4 spd trans. In poor condition.

TAG-A-LONG, FLATBED, AND CEMENT TRAILERS

1996 INTERSTATE 10 Ton Tag-A-Long Trailer • 2005 JLG UT49, 4,500# Tilt Deck Tag-A-Long Trailer • 1980 MILLER OT-620, 12 Ton T/A Tilt Deck Tag-A-Long Trailer • **TURTLE MOUNTAIN MANUFACTURING 5,000# Military Power Tilt Trailer** • Shop Made Flatbed Utility Trailer • 1984 TRANSCRAFT TL90K-48, 48' T/A High Deck Flatbed Trailer • 1973 FRUEHAUF 870 CF T/A Cement Trailer

TRENCH BOXES, ROAD PLATE, Z-PILING, AND I-BEAMS



TRENCH BOXES

TRENCH BOXES: 8'x27', 96" pin-on spreaders • 10'x20', 81" pin-on spreaders • 8'x20', 36" pin-on spreaders • **AMERICAN SHORING 8'x12', 42" pin-on spreaders** • 8'x10', 96" pin-on spreaders • 8'x8', 48" pin-on spreaders • (2) 10'x28", bolt-on spreaders. In fair to good condition • 8'x24', 56" bolt-on spreaders • 5'x23'6", 48" bolt-on spreaders • 8'x19'6", 48" bolt-on spreaders • 8'x18', 60" bolt-on spreaders • 6'x18', 34" bolt-on spreaders • 8'x16'6", bolt-on spreaders • 10'x12', 84" bolt-on spreaders • 8'x12', 96" bolt-on spreaders. • **SHIELDCO TR-ARCH-R Trench Box Shielding System** • (24) Assorted Bolt-On Spreaders • (15) 45" to 54" Pin-On Spreaders • (30) 60" to 120" Pin-On Spreaders

ROAD PLATE: (4) 10'x20'x1" • (5) 8'x20'x1" • (5) 8'x20'x3/4" • (2) 8'x10'x1" • (1) 8'x11'8" x3/4" • (4) 8'x10'x3/4" • (1) 8'x8'x3/4" • (1) 6'x12'x3/4" • (1) 5'2" x11'x1"

PZ27 Z-PILING: (20) 35' to 40' • (26) 20' to 25' • (14) 10' to 15'

I-Beams: (3) 42'x3/4" thickness • (4) 25'x3/4" thickness • (6) 32'x3/4" and 1" thickness • (9) 15'x5/8" thickness

CONTRACTORS TOOLS



TARGET PRO65 II Walk Behind Concrete Saw • Walk Behind Concrete Saw • **MIKASA MT-74-F Foot Compactor** • **WACKER Foot Compactor** • (3) Plate Compactors • **REINHERT 6P40**, 4" Portable Grout Pump • **MUELLER 65 Portable Mortar Mixer** • **STOW Concrete Vibrator** • **AXECO TA1A Portable Paving Breaker**, Lombardini dsl • Assorted Pneumatic Paving Breakers, Chipping Hammers, and Tampers • **PARTNER K950 Demo Saw** • **STIHL Demo Saw** • **STIHL 036 Chain Saw** • **STIHL 029 Chain Saw** • **SPD KING 12 Volt Power Digger** • (3) Electric Rotary Hammers • Line Painter, 5HP gas • Gas Powered Sod Cutter • **FORD RTS Rototiller**, gas, 12" tines • **POWER TRIM Gas Powered Edger** • **SNAPPER Gas Lawn Mower** • **HONDA 3500 Watt Generator** • **SAND-BORN S165T051B-8**, 120PSI Portable Air Compressor, Briggs & Stratton 5HP gas • (2) Pneumatic Lifts • Assorted Lifting, Rigging, Chains, Hooks, and Binders • (2) **SKOTT Oxygen Air Packs**, with respirators • **LEICA Rugby 100 Rotating Laser** • **TOPCON AT-G3 Auto Level** • (2) **DAVID WHITE Transits** • **DIETZGEN Transit** • Skid Mounted Bentonite Mixing System, Briggs & Stratton 8HP gas • Assorted Hand Tools • Concrete Finishing Tools • (2) Sheet Piling Lifting Clamps • Walk Behind Propane Asphalt Heater



SHOP TOOLS

Pressure Washer • 60 Ton Hydraulic Shop Press • Parts Washer • Metal Cutting Band Saw • (2) Drill Presses • (2) Bench Grinders • Portable Shop Gantry, Yale 1-ton electric chain hoist • **COATS 10-10 Tire Machine** • **MICRO M76 Wheel Balancer** • (2) Sandblast Pots • Welders • Welding Rod • (2) Battery Charges • Jacks • Impact Wrenches • Saws, Drills, Grinders • Orbital Sander/Grinder • Shop Vac • Shop Tables & Hand Tools