

1440 COWPATH RD. • HATFIELD, PA 19440
 215/361-9099 • Fax: 215/361-9212
 www.hunyady.com



'03 LEEBOY L8500T



(2) '14 BOBCAT T770



'87 CAT D8N

PRE-SORTED
 FIRST CLASS MAIL
 US POSTAGE
PAID
 HAVERTOWN, PA
 PERMIT #45



ABSOLUTE AUCTION

SURPLUS LIQUIDATION

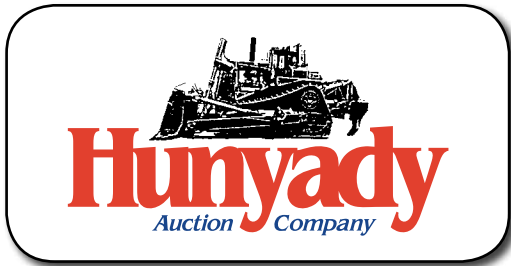
Ankiewicz
Enterprises Inc.

WEDNESDAY,
JUNE 28, 2017
9:00AM

'13 DOOSAN DX350LC-3

Tamaqua,
Pennsylvania

ABSOLUTE AUCTION



Ankiewicz Enterprises Inc.



Notice: Ankiewicz Enterprises, Inc. has decided to liquidate equipment that is surplus to their present needs. Ankiewicz Enterprises will continue in site and public utilities contracting as well as expanding their AEI Equipment Services, Inc. Distributorship. Consignments have also been added by area contractors and a financial institution. All items will sell at absolute auction to the highest bidder, without minimums, reserves, or buyer's premium, with the exception of the real estate which will be offered "Subject To Owner's Immediate Confirmation".

Location: The auction will be held at one of Ankiewicz Enterprises' facilities located at 920 East Broad Street (US Route 209), Tamaqua, Pennsylvania 18252.

Directions: FROM THE INTERSECTION OF PA 309 AND US 209 IN TAMAQUA, PA: Take US 209 North (0.9) miles to auction site on right.

Online Bidding: Live internet bidding will be provided by Proxibid. Proxibid will charge an Internet Service Provider Fee of 5% to the successful internet bidder for items over \$10,000 and 10% for items \$10,000 and under, for each lot purchased on-line. All interested internet bidders are required to register w/Proxibid 24 hours prior to the auction at www.proxibid.com/hunyady or call 877-505-7770.

Terms: Payment in full is required on sale day by cash, certified funds, or check with a bank letter of guarantee. Sample letter of guarantee: "We hereby guarantee the payment of our customer _____ written on his account up to _____ dollars for purchases at your auction sale on June 28, 2017". All guaranteed checks should be made payable to Hunyady Auction Co.

Sales Tax: Since these contractors are selling items not normally sold in the course of their businesses, the Commonwealth of Pennsylvania considers this an isolated sale and does not require the auction company to collect sales tax. However, items consigned by dealers and financial institutions are subject to Pennsylvania sales tax and are indicated as such. On these items PA sales tax will be collected at the rate of 6% unless a valid exemption is presented.

Financing: Financing is available, please contact Susan (215) 361-9099 at the auction company for details.

Inspection: Items will be available for inspection beginning one week prior to the auction from 8:00AM to 4:00PM or sale day morning beginning at 7:00AM. This site will be closed Saturday, Sunday, June 24th and 25th.

Removal: After complete payment, all sale items may be removed on sale day as long as the removal activity is not disruptive to the sale and only until 5:00PM. Items may also be removed Thursday and Friday, June 29th and 30th and Wednesday and Thursday, July 5th and 6th from 8:00AM until 4:00PM. All items must be removed no later than Thursday, July 6, 2017 by 4:00PM.

Sale Site Phone: (267) 446-3808 • Sale Site Fax: (888) 859-8958

TRENCH COMPACTORS AND AERIAL LIFT

2004 WACKER Model RT Trench Compactor, s/n 102 5456128, powered by Lombardini diesel engine, equipped with 32" split padfoot drums, drum cleaners, and wireless remote. In good condition.



'04 WACKER RT

INGERSOLL RAND Model TC13 Trench Compactor, powered by Kubota diesel engine and hydrostatic transmission, equipped with 33" split padfoot drums, drum cleaners, and remote control. In good condition.

1998 JLG Model 35E, 35' Aerial Lift, s/n 0300035285, battery powered, hydrostatic transmission, equipped with 24"x48" basket, 500# capacity, and G78-15 tires. In fair condition with fair tires.

CONTRACTORS TOOLS, PARTS, AND BUILDING MATERIALS

Miscellaneous Support Tools: Foot Compactors and Plate Compactors • **TAYLOR-WAY** 66" 3-Point Hitch/PTO Attachment • (Rebuilt) **CAT** 3406, 425HP Diesel Engine, with Jake brake • Guardrail Sections and Posts • Stackable Concrete Blocks • Storage Trailers

REAL ESTATE

(OFFERED SUBJECT TO OWNER'S IMMEDIATE CONFIRMATION)
920 East Broad St., Tamaqua, PA

(9+/- Acres) • (11,208+/- Sq Ft) Single Story Commercial Warehouse • Utilities: Private Water & Sewer, PPL Public Electricity • Zoned H-C, Highway Commercial • **TERMS:** 10% Deposit on Sale Day/Closing Within (90) Days.



REAL ESTATE

SURPLUS LIQUIDATION

Ankiewicz Enterprises Inc.

WEDNESDAY, JUNE 28, 2017 - 9:00AM

Tamaqua, Pennsylvania

HYDRAULIC EXCAVATORS AND ATTACHMENTS

2014 DOOSAN Model DX350LC-5 Hydraulic Excavator, s/n 1010046, powered by Scania diesel engine and hydraulic drive, equipped with 10'6" dipper stick, Rockland hydraulic coupler, auxiliary hydraulics, rear view camera, enclosed cab with heat and air conditioning, and 31.5" TBG pads. In good condition with good undercarriage. (4,547 Hours) (No Bucket) (Will Be Offered Separately and With Doosan DXB260H Hammer) (SALES TAX) (PNC)



'14 DOOSAN DX350LC-5

2014 DOOSAN Model DXB260H Hydraulic Demo Hammer, s/n X260C50138. In good to very good condition. (Will Be Offered Separately and With 2014 Doosan DX350LC-5) (SALES TAX) (PNC)



'14 DOOSAN DXB260H



'13 DOOSAN DX350LC-3

2013 DOOSAN Model DX350LC-3 Hydraulic Excavator, s/n 1010065, powered by Doosan diesel engine and hydraulic drive, equipped with 10'6" dipper stick, 36" digging bucket, Doosan hydraulic coupler, auxiliary hydraulics, rear view camera, enclosed cab with heat and air conditioning, and 31.5" TBG pads. In good condition with good undercarriage. (3,374 Hours)



'11 DOOSAN DX235LCR

2011 DOOSAN Model DX235LCR Hydraulic Excavator, s/n 0005026, powered by Doosan diesel engine and hydraulic drive, equipped with 9' dipper stick, 48" digging bucket, Geith hydraulic coupler, auxiliary hydraulics, rear view camera, enclosed cab with heat and air conditioning, and 31.5" TBG pads. In good condition with good undercarriage. (3,066 Hours)

ALLIED Hydraulic Plate Compactor (S-1 Coupler) • CAT 54" Digging Bucket (Cat 330) • GEITH 60" Digging Bucket • GEITH 48" Digging Bucket (S-3 Coupler) • GEITH 36" Digging Bucket (S-1 Coupler) • GEITH 36" Digging Bucket (S-1 Coupler) • GEITH 30" Digging Bucket (S-3 Coupler) • GEITH 30" Digging Bucket (S-3 Coupler) • 38" Cleanup Bucket (Mini Excavator) • 9" Digging Bucket (Mini Excavator) • 24" Digging Bucket (Mini Excavator) • BOBCAT Hydraulic Demo Hammer (No Adaptor) • 22" Thumb • Grapple Stand

2012 DOOSAN Model DX180 Hydraulic Excavator, s/n 0005422, powered by Doosan diesel engine and hydraulic drive, equipped with 8'3" dipper stick, Doosan 42" digging bucket, Geith hydraulic coupler, auxiliary hydraulics, rear view camera, enclosed cab with heat and air conditioning, and 24" TBG pads. In good condition with good undercarriage. (2,878 Hours)



'12 DOOSAN DX180

2006 VOLVO Model EC360BLC Hydraulic Excavator, s/n 80176, powered by Volvo D12DEB2 diesel engine and hydraulic drive, equipped with 11' dipper stick, 72" digging bucket, hydraulic coupler, auxiliary hydraulics, enclosed cab with heat and air conditioning, and 29.5" pads. In good condition with good undercarriage. (3,869 Hours) (Hammer In Photo-Not in Auction)



'06 VOLVO EC360BLC (HAMMER NOT IN AUCTION)



'05 VOLVO EC330BLC

2005 VOLVO Model EC330BLC Hydraulic Excavator, s/n 10422, powered by Volvo D12CECE2 diesel engine and hydraulic drive, equipped with 10'6" dipper stick, Geith 54" digging bucket, hydraulic coupler, auxiliary hydraulics, enclosed cab with heat and air conditioning, and 31.5" TBG pads. In good condition with good undercarriage. (06,918 Hours)



'02 VOLVO EC460LC

2002 VOLVO Model EC460LC Hydraulic Excavator, s/n 03321, powered by Cummins M11 diesel engine and hydraulic drive, equipped with 11' dipper stick, Geith 72" digging bucket, hydraulic coupler, auxiliary hydraulics, hydraulic counterweight removal device, enclosed cab with heat and air conditioning, and 29.5" TBG pads. In good condition with fair to good undercarriage.

CRAWLER TRACTORS AND RUBBER TIRED LOADER

1987 CATERPILLAR Model D8N Crawler Tractor, s/n 9TC01679, powered by Cat 3406 diesel engine and powershift transmission, equipped with straight blade with tilt, drawbar, ROPS canopy, and 24" SBG pads. In good condition with good undercarriage. (Less Than 500 Hours on Engine Overhaul and New Torque Converter)



'87 CAT D8N



CAT D3B

CATERPILLAR Model D3B Crawler Tractor, s/n 24Y00629, powered by Cat diesel engine and powershift transmission, equipped with 6-way straight blade, tow hitch, ROPS canopy, and 25" pyramid tracks. In good condition with good undercarriage. (CE ANKIEWICZ)

JOHN DEERE Model 544A Rubber Tired Loader, s/n 1293531, powered by JD diesel engine and powershift transmission, equipped with general purpose loader bucket with bolt-on cutting edge, enclosed ROPS cab with heat, and 17.5-25 tires. In good condition with good tires. (CE ANKIEWICZ)



JOHN DEERE 544A

END DUMPS

1993 VOLVO Model A30, 30 Ton 6x6 End Dump, s/n A30V1249, powered by Volvo diesel engine and powershift transmission, equipped with heated dump body (not plumbed), air conditioning, and 23.5R25 tires. In fair to good condition with fair and poor tires.



'93 VOLVO A30



'96 VOLVO A25C

1996 VOLVO Model A25C, 25 Ton 6x6 End Dump, s/n 5350V60881, powered by Volvo diesel engine and powershift transmission, equipped with 23.5R25 tires. In good condition with good tires.

1999 BELL Model B25C, 25 Ton 6x6 End Dump, s/n 030032, powered by Cummins diesel engine and powershift transmission, equipped with air conditioning. In good condition with good to very good tires. (BARHITE)



'99 BELL B25C

ASPHALT PAVER AND COMPACTOR

2003 LEEBOY L8500T High Deck Crawler Asphalt Paver, s/n 3115HD, powered by Cummins diesel engine and hydraulic drive, equipped with Legend 8' to 15' vibratory and heated screed. In fair condition. (983 Hours)



'03 LEEBOY L8500T



'98 CHAMPION SUPER PAC 840

1998 CHAMPION Model Super Pac 840 Vibratory Compactor, s/n 101284, powered by Cummins diesel engine and hydrostatic transmission, equipped with 84" smooth drum, ROPS canopy, and 23.1-26 tires. In fair to good condition with good tires.

SKID STEER LOADERS AND ATTACHMENTS

2014 BOBCAT Model T770 Crawler Skid Steer Loader, s/n AN8T13749, powered by 4 cylinder diesel engine and 2 speed hydrostatic transmission, equipped with high-flow auxiliary hydraulics, hydraulic coupler, Warn series 15, 15,000# rear mounted hydraulic winch, enclosed ROPS cab with air conditioning, and 18" rubber tracks. In good condition with good tracks. (1,503 Hours) (No Bucket) (SALES TAX) (PNC)



'14 BOBCAT T770



'14 BOBCAT T770

2014 BOBCAT Model T770 Crawler Skid Steer Loader, s/n AN8T13419, powered by 4 cylinder diesel engine and 2 speed hydrostatic transmission, equipped with high-flow auxiliary hydraulics, hydraulic coupler, Warn series 15, 15,000# rear mounted hydraulic winch, enclosed ROPS cab with air conditioning, and 18" rubber tracks. In good condition with good tracks. (1,681 Hours) (No Bucket) (SALES TAX) (PNC)

2013 BOBCAT Model S650 Skid Steer Loader, s/n A3NV23623, powered by Kubota V3307-DI-T-ET103, 4 cylinder diesel engine and 2 speed hydrostatic transmission, equipped with 80" general purpose loader bucket, auxiliary hydraulics, hydraulic coupler, enclosed ROPS cab with air conditioning, and 12-15.5 tires. In good condition with fair to good tires. (2,088 Hours) (SALES TAX) (PNC)



'13 BOBCAT S650

2005 MUSTANG Model 2086 Skid Steer Loader, s/n 00002981, powered by 4 cylinder diesel engine and hydrostatic transmission, equipped with 83" general purpose loader bucket, auxiliary hydraulics, manual coupler, and 12-16.5 tires. In good condition with good tires. (0,953 Hours)



'05 MUSTANG 2086



UNUSED ERSKINE ATTACHMENTS

• Dust Control Water Kit, with (2) 20 gallon poly tanks • 60" Concrete Bucket

Attachments (NOT Subject To PA Sales Tax): (2) 42" Forks • 79" GP Loader Bucket, with teeth (Side Damaged) • (1 Set) **UNUSED** 12.5" Rubber Tracks (New Holland Skid Steer)



PAVER SPECIAL LOWBOY AND SPREAD AXLE FLATBED

1994 ROGERS Model CR40SL-86/48/33/102/3XSP, 40 Ton Tri-Axle Paver Special Lowboy Trailer, equipped with non-ground bearing detachable gooseneck, gas pony motor, 8'6"x33' inclining deck, spring suspension, chain dogs, and 255/70R22.5 tires. In good condition with good tires.



'94 ROGERS 40 TON

2004 GREAT DANE Model GPLWSAR249, 48' Spread Axle Flatbed Trailer, equipped with 96" width, 69,000# GVWR, aluminum bed/steel frame, air ride suspension, ratchet tie-downs, aluminum bulkhead, aluminum wheels, and 275/80R22.5 tires. In good condition with fair tires. (CE ANKIEWICZ)



'04 GREAT DANE 48'

DUMP TRUCKS

1999 FORD Model F-550 Super Duty 4x4 Dump Truck, powered by Powerstroke diesel engine and 6 speed transmission, equipped with 9' steel dump body with manual tarp and fold-down sides, Meyer 9' snowplow, 12,980# rear and 5,510# front axle, 17,500# GVWR, dual rear wheels, tow package, air conditioning, and 225/70R19.5 tires. In fair condition with good tires. (New Transmission-Zero Miles) (NINSA)



'95 CHEVY KODIAK

1995 CHEVROLET Kodiak Single Axle Dump Truck, powered by V-8 gas engine and automatic transmission, equipped with 10' steel dump body with single chute, 10' snowplow, 17,640# rear and 8,100# front axle, 25,740# GVWR, tow package, spring suspension, and 235/80R22.5 tires. In fair condition with fair tires. (NINSA)

(3) 1985 AUTOCAR Tri-Axle Dump Trucks, powered by Cat 3306 diesel engine and 10 speed transmission, equipped with 16' steel dump body, and 11R24.5 front and rear, and 10.00x20 lift tires. In fair condition. (NESTLERODE)

PICKUP TRUCKS, UTILITY TRUCK, AND TAG-A-LONG TRAILERS

2004 CHEVROLET Model 2500HD LS 4x4 Crew Cab Pickup Truck, powered by Vortec 8.0L gas engine and automatic transmission, equipped with 8' bed, 100 gallon fuel tank with 12 volt pump, cross and side toolboxes, power windows, locks, mirrors, and seats, running boards, tow package, and 245/75R16 tires. In good condition with good tires.



'04 CHEVY 2500HD 4X4

2003 DODGE Model Ram 1500SLT 4x4 Crew Cab Pickup Truck, powered by Hemi 5.7L, V-8 gas engine and automatic transmission, equipped with 6' bed with liner, power windows, locks, mirrors, and seats, running boards, tow package, air conditioning, cruise control, and 265/70R17 tires. In good condition with fair tires.

2001 DODGE Ram 3500 Utility Truck, powered by Magnum V-8 gas engine and 5 speed transmission, equipped with Stahl 9' open utility body, tow package, dual rear wheels, air conditioning, and 235/85R16 tires. In fair to good condition with good tires. (CE ANKIEWICZ)

2011 APPALACHIAN Model CG-SWT20 Tandem Axle Tilt Deck Tag-A-Long Trailer, equipped with 80"x4' stationary deck, 16' tilting deck, 20" ramps, 15,000# GVWR, electric brakes, and 235/85R16 tires. In good condition with good tires.

1996 S.G. Tri-Axle Tag-A-Long Trailer, equipped with 8'x22' level deck, 5' beavertail, 5' ramps, electric brakes, and 9.50-16.5 tires. In fair condition with good tires. (NINSA)