

# **ABSOLUTE AUCTION**

## **COMPLETE LIQUIDATION**

### **Atlantic Cable, LLC**



**WEDNESDAY, JUNE 20, 2012 - 9:00AM**

**Portsmouth, Virginia  
(Virginia Beach/Norfolk Area)**

DITCH WITCH  
JT2720



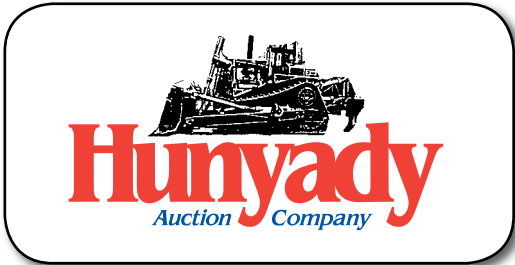
**'00 CAT 416C AND '96 CAT 416B**



**FORD F-700 FLUID MIXING WITH 6 TON TAG TRAILER**



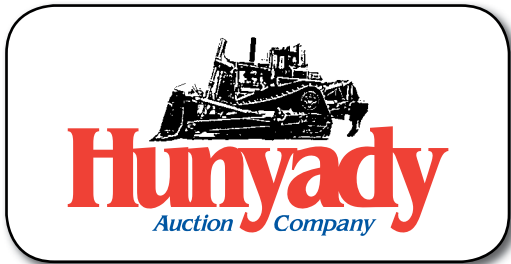
**FORD F-800 FLAT DUMPS**



1440 COWPATH RD. • HATFIELD, PA 19440  
215/361-9099 • Fax: 215/361-9212  
[www.hunyady.com](http://www.hunyady.com)

PRE-SORTED  
FIRST CLASS MAIL  
US POSTAGE  
**PAID**  
HAVERTOWN, PA  
PERMIT #45





## Atlantic Cable, LLC

Bid Live Online! proxibid.  
www.proxibid.com/hunyady



**Notice:** Following (15) years in the underground utility business, Atlantic Cable, LLC has ceased operations and all assets will sell at absolute auction regardless of price and without minimums, reserves, or buyer's premiums!

**Location:** The auction will be held at the Atlantic Cable, LLC facility at 3350 Elm Avenue, Portsmouth, VA 23704

**Terms:** Payment in full is required on sale day by cash, certified funds, or check with a bank letter of guarantee. Sample letter of guarantee: "We hereby guarantee the payment of our customer \_\_\_\_\_ written on his account up to \_\_\_\_\_ dollars for purchases at your auction sale on June 20, 2012." All guaranteed checks should be made payable to Hunyady Auction Co.

**Online Bidding:** Live internet bidding will be provided by Proxibid. Proxibid will require a 2.5% internet provider service fee (capped at \$750) that will be charged for each item purchased online. All interested internet bidders are required to register with Proxibid 24 hours prior to the auction at [www.proxibid.com/hunyady](http://www.proxibid.com/hunyady) or call 877-505-7770

**Sales Tax:** Since this contractor is selling items not normally sold in the course of his business, the Commonwealth of Virginia considers this an isolated sale and does not require the auction company to collect sales tax.

**Financing:** Financing is available, please contact Susan (215) 361-9099 at the auction company for details.

**Sale Site Directions: FROM INTERSTATE 264 (Norfolk Area):** Follow Interstate 264 West, thru Downtown tunnel into Portsmouth. Exit Interstate at Exit #7 and merge onto Bart Street, then turn left onto Effingham Street (VA Route 141) Follow (1.3) miles and turn left onto Elm Avenue. Proceed to sale site on right.

**FROM INTERSTATE 664 (Suffolk Area):** Follow Interstate 264 East toward Portsmouth. Exit #5 (US Route 17/Frederick Blvd.) Follow Route 17 South (1.2) miles and turn left onto VA Route 141 North. Continue (0.5) miles and turn right onto Elm Avenue. Proceed to sale site on right.

**Inspection:** Items will be available for inspection beginning one week prior to the auction from 8:00AM to 5:00PM. The site will be closed Saturday and Sunday, June 16th and 17th.

**Removal:** After complete payment, all sale items may be removed on sale day as long as the removal activity is not disruptive to the sale and only until 5:00 p.m. Items may also be removed Thursday and Friday, June 21st and 22nd and Monday thru Wednesday, June 25th thru June 27th, from 8:00 a.m. to 4:00 p.m. All items must be removed no later than Wednesday, June 27, 2012 at 4:00 p.m.

**Airport Information:** The area is serviced commercially through Norfolk International Airport. Private Aviation is served through Hampton Roads Executive Airport (PVG) FBO: 757-465-0260. Enterprise rental cars are available.

**Motel Information:** Hampton Inn & Suites, 1421 North Battlefield Boulevard, Chesapeake, VA 23320, (757) 819-5230 • Comfort Inn Olde Town (Portsmouth) 347 Effingham Street, Portsmouth, VA 23704, (757) 397-7788

## Sale Site Phone: (800) 233-6898 • Sale Site Fax: (888) 859-8958

### MASON DUMP, UTILITY, AND PICKUP TRUCKS

**1997 FORD F-450 SD Mason Dump Truck,** Powerstroke 7.3L dsl and 5 speed trans, Ox 14' dump body, tow package, dual rear wheels, a.c. In fair to good condition with good tires.



'97 FORD F-450 MASON DUMP

**1999 FORD F-250XLT SD Extended Cab Utility Truck,** Powerstroke 7.3L dsl and auto trans, Reading 8'6" utility body with ladder rack, IR gas powered air compressor with hose reel, cc, pw, pl, a.c. In fair to good condition with fair to good tires.



'02 FORD F-250 EXTENDED CABS

**(2) 2002 FORD F-250XL SD Extended Cab Pickup Trucks,** Triton 5.4L, V-8 gas and auto trans, 8' bed with liner and cross toolbox, a.c. In good condition with fair tires.

**(3) 2000 FORD F-250XL SD Pickup Trucks,** Triton 5.4L, V-8 gas and auto trans, 8' bed with liner and cross toolbox, a.c. In good condition with good to very good tires.



(2) OF (3) '00 FORD F-250

**(2) 2001 FORD F-150XL Pickup Trucks,** 4.2L, V-6 gas and auto trans, 8' bed with liner, a.c. In fair to good condition with fair to good tires.



(2) OF (5) FORD F-150

**(3) 2000/2001 FORD F-150 Pickup Trucks,** 4.2L, V-6 gas and auto trans, 8' bed with cap, a.c. In good condition with fair tires.

**1997 FORD F-250 Pickup Truck,** 5.8L, V-8 gas and auto trans, 8' bed. In fair to poor condition with fair tires.

**1995 FORD F-250XL Pickup Truck,** 5.8L, V-8 gas and auto trans, 8' bed with liner, a.c. In fair condition with fair to poor tires.

**1991 FORD F-250XL HD Pickup Truck,** 5.8L, V-8 gas and auto trans, 8' bed with liner, a.c. In fair condition with fair tires. (Trans Linkage Frozen)

**1996 JEEP Grand Cherokee Laredo 4x4 Sport Utility Vehicle,** 4.0L, 6 cylinder gas and auto trans, power package. (Not Running)

### PLUS MANY MORE ITEMS TOO NUMEROUS TO LIST!



**Tag-A-Long Trailers: (4) HILLSBORO 6 Ton T/A • (3) LOAD TRAIL 6 Ton T/A • BUTLER T/A • (2) DITCH WITCH 10 Ton T/A • (3) CMW T/A • (3) LOAD TRAIL T/A Tag-A-Long Trailers (Parts)**

(1) OF (10) TANDEM AXLE TAG TRAILERS

**Reel Trailers and Conduit: HOOPER Tri-Axle Reel Trailer, 20'x9' 4-reel carriage**  
• (10) T/A Reel Trailers, hydraulic positioning reel stands • (6) Single Axle Reel Trailers  
• Approximately (40 Reels) Various Diameter and Length of Conduit

(2) OF (10) TANDEM AXLE REEL TRAILERS



Contractors Tools • Air Compressors and Welder/Generators • Shop Tools and Equipment • Used Engines • Office Equipment and Furniture

## HORIZONTAL DIRECTIONAL DRILLS



**2005 DITCH WITCH JT2720 Mach 1**, s/n CMWJ27T2K5000006, JD 4.5L Powertech dsl, (340') drill stem, auto stake down, fluid system, and 12" rubber tracks. In good condition with good undercarriage.

**05 DITCH WITCH JT2720 MACH 1**

**2000 DITCH WITCH JT2720**, s/n 3J2T2704, Cummins dsl, (500') drill stem, auto stake down, fluid system, and 12" rubber tracks. In good condition with good undercarriage.



**00 DITCH WITCH JT2720**

**2000 DITCH WITCH JT2720**, s/n J2T2209, JD dsl, (370') drill stem, auto stake down, fluid system, and 12" rubber tracks. In good condition with good undercarriage.



**00 DITCH WITCH JT2720**

**2000 DITCH WITCH JT920L**, s/n 2T1072, Lister Petter dsl, (130') drill stem, auto stake down, fluid system, operator station, and 9" rubber tracks. In good condition with good undercarriage.

**2000 DITCH WITCH JT2720**, s/n 2T0376, JD dsl, auto stake down and 12" rubber tracks. (Drill Motor and Gear Box Replacement In Progress, Not Completed-Will Sell with New Parts, Uninstalled)

**1998 DITCH WITCH 2720**, s/n 2R27008, JD dsl. (Parts Only) (Missing Left Track, Drill Motor and Gear Box, Right Side Planetary and Axle)

**1998 DITCH WITCH JT920E**, s/n 2R3392, Lister dsl, auto stake down, fluid system, and 10" rubber tracks. (Not Running-Hydraulic Hoses Disconnected)



**00 DITCH WITCH JT920L**

## FIBER OPTIC PULLING, SPLICING, AND TESTING EQUIPMENT



**SINGLE DRUM PULLER**

**(2) CONDUX** Fiber Optic Pullers, 30"x6" bull wheel, Briggs & Stratton 18HP gas, mounted on single axle trailer • **CONDUX** Fiber Optic Puller (Parts) • Single Drum Puller, Wisconsin gas • **(4) CORNING SIECOR M90/Series 6000 Fusion Splicers** • **SIECOR 340 OTDR Plus Multi-Tester II** • **(2) AGILENT** Wirescope 350 Cable Certifiers • Cable Pulling Guides and Stringing Blocks • Splicing Material, Tools, and Accessories



**FIBER OPTIC SPLICERS**

## COMBO TRENCHER PLOWS

**2000 DITCH WITCH 5110DD Combo Trencher Plow**, s/n 5T0616, Deutz dsl, A420 backhoe attachment, A450 10' trencher bar and vibratory cable plow, 64" backfill blade, roll-bar. In good condition with good tires.

**1996 DITCH WITCH 5110DD Combo Trencher Plow**, s/n 5N0024, Deutz dsl, A420 backhoe attachment, A450 10' trencher bar and vibratory cable plow, 64" backfill blade, roll-bar. In good condition with fair to poor tires.

**1995 DITCH WITCH 410SXDD Articulated Trencher Plow**, s/n 4M0490, dsl, vibratory cable plow, 4'6" trencher bar, and boring attachment. In fair condition with fair tires.

**1994 DITCH WITCH 7610DD Combo Trencher Plow**, s/n 5L0822, Deutz dsl, A655 10' trencher bar and vibratory cable plow, A620 backhoe, 72" backfill blade. In fair condition with fair to good tires. (Runs; Fan Motor Belt Missing; No Clutch)

**1988 DITCH WITCH 4010DD Vibratory Cable Plow/Backhoe**, s/n 6E0871, Deutz dsl, A321 backhoe attachment, A430 vibratory cable plow, 64" backfill blade, roll-bar. In fair condition with poor tires.



**00 AND 96 DITCH WITCH 5110DD**



**95 DITCH WITCH 410SXDD**

## BUTT FUSION AND DRILLING ACCESSORIES, LOCATORS, AND PIERCING TOOLS



**2000 MCELROY Rolling 28 A850101 Rolling Butt Fusion Machine**, s/n C00464, 2" to 8" diameter pipe, heat paddles and dies. In good condition.

**NOGGIN SMART Cart** Ground Penetrating Radar System, with 250 MHz GPR and display screen, (recent calibration)

**(6) DW 750** Tracker Locating Wands • **(2) DW 86BH** Deep Sondes • **(4) DW 86B** Standard Depth Sondes • **(2) UNUSED** Drill Heads • (20+/-) Various Sized Reamers, Drill Heads, and Swivels

**00 MCELROY ROLLING 28**

**(2) 4" Piercing Tools** • **(5) 3" Piercing Tools** • **(2) 2" Piercing Tools** • **(4) Duct Rodders**



**NOGGIN SMART CART GPR**



**PIERCING TOOLS**

## TRACTOR LOADER BACKHOES AND FORKLIFT



**00 CAT 416C 4X4 EXTEND-A-HOE**

**2000 CATERPILLAR 416C, 4x4 Extend-A-Hoe**, s/n 4ZN19777, dsl and shuttle trans, GP loader bucket, 16" digging bucket, ROPS canopy. In fair to good condition with fair front and poor rear tires.

**1996 CATERPILLAR 416B Extend-A-Hoe**, s/n 8SG14616, Cat dsl and shuttle trans, GP loader bucket, 24" digging bucket, ROPS canopy. In fair to good condition with fair to good tires.



**1993 NISSAN 60, 6,000# Cushion Tired Forklift**, s/n CRGH0ZP920207, LP gas, 183" 3-section mast, 53" forks, power side shift, and FOPS canopy. In fair to good condition.

**96 CAT 416B EXTEND-A-HOE**

## FLUID MIXING AND VAC TRUCKS



**1998 FORD F-800 Fluid Mixing Truck**, V-8 gas and 6 speed trans, 16' steel flatbed, DW MM9 fluid mixing system with (2) 500 gallon poly tanks, (2) CH&E pumps, (2) Honda 9HP gas, tow package, dual rear wheels, electric brakes, 11R22.5 tires, 26,000# GVWR. In good condition with good tires.

**1995 FORD F-700 Fluid Mixing Truck**, Ford V-8 gas and Allison auto trans, 16' steel flatbed, DW MM9 mixing system with (2) 500 gallon poly tanks, (2) CH&E pumps, (2) Robin 9HP gas, tow package, dual rear wheels, electric brakes, 11R22.5

### '98 FORD F-800 FLUID MIXING

tires, 26,000# GVWR. In fair to good condition with fair to good tires.

**1995 FORD F-700 Fluid Mixing Truck**, Ford V-8 gas and Allison auto trans, 16' steel flatbed, DW MM9 mixing system with (2) 500 gallon poly tanks, (2) CH&E pumps, (2) 9HP gas, dual rear wheels, electric brakes, 11R22.5 tires, 26,000# GVWR. In fair to good condition with fair to good tires.

**1995 FORD F-700 Fluid Mixing Truck**, V-8 gas and Allison auto trans, 16' steel flatbed, DW MM9 mixing system with (2) 500 gallon poly tanks, (2) CH&E pumps, (2) Honda 9HP gas, dual rear wheels, electric brakes, and 11R22.5 tires. In fair to good condition with good tires.

**1995 FORD F-700 Fluid Mixing Truck**, Ford V-8 gas and auto trans, 16' steel flatbed, DW MM9 mixing system with (2) 500 gallon poly tanks (no pumps or motor-tanks only), tow package, electric brakes, 10R22.5 tires, 26,000# GVWR. In fair condition with good tires.

**1997 FORD F-700 Fluid Mixing Truck**, Ford V-8 gas and Allison auto trans, 16' steel flatbed, DW MM9 mixing system with (2) 500 gallon poly tanks (no pumps or motor-tanks only), tow package, electric brakes, 10R22.5 tires, 26,000# GVWR. In fair condition with fair to poor tires. (Not Running-Bad Valves)



### '95 F-700 WITH VAC-TRON PDM500

package, dual rear wheels, electric brakes, and 11R22.5 tires. In fair to good condition with fair to good tires.

**1995 FORD F-700 Vac Truck**, V-8 gas and Allison auto trans, 16' steel flatbed, Vac-Tron PDM-500, 500 gallon vacuum unit, hydraulic dump, Kohler gas, tow package, dual rear wheels, electric brakes, 11R22.5 tires, 26,000# GVWR. In good condition with good tires.

**1995 FORD F-700 Vac Truck**, V-8 gas and Allison auto trans, 16' steel flatbed, Vac-Tron PDM-500, 500 gallon vacuum unit, hydraulic dump, Kohler gas, 225 gallon poly tank, tow package, dual rear wheels, electric brakes, and 11R22.5 tires. In fair to good condition with fair to good tires.

**1992 GMC Topkick Vac Truck**, V-8 gas and auto trans, 16' steel flatbed, 500 gallon Vactor vessel with National 360 Challenger vacuum pump, Kubota 3 cylinder dsl, dual rear wheels, 9.00x20 tires, 24,260# GVWR. In fair condition with fair tires. (Vac Motor Not Running)

## ATTENUATOR AND BUCKET TRUCKS



### '98 FORD F-800 ATTENUATOR

**1994 FORD F-700 Bucket Truck**, Ford Cummins 5.9L, 190HP dsl and auto trans, 1994 Altec TA35, 35' aerial lift, 300# basket with hydraulic tool outlets, 9' utility body with 3' platform, air brakes, a.c., and 11R22.5 tires. In good condition with good tires.

**1999 FORD F-450 SD Bucket Truck**, Powerstroke 7.3L dsl and auto trans, 1998 ALTEC AT200A, 30' aerial lift, 300# basket, Altec 9' utility body with 30' platform, Redi-Line power inverter, a.c., and 225/70R19.5 tires. In good condition with good tires.

**1998 FORD E-350 Van/Bucket Truck**, Triton gas and auto trans, Altec AT200AV 36' aerial lift, 300# basket, a.c. In good condition with good tires.

**1989 GMC 3500 Bucket Truck**, V-8 gas and auto trans, 1988 Versalift TEL28-G, 28' aerial lift, 300# basket, Knapheide 9' utility body, tow package. In fair condition with good tires.

**1997 FORD F-700 Bucket Truck**, V-8 gas and Allison auto trans, Pitman Polecat PC1300, aerial lift, 15,000#, 32' boom, turret winch, 300# man basket, Pierce line body, (4) outriggers, 10R22.5 tires, 26,000# GVWR. (Not Running - Missing Radiator)

**1998 FORD F-800 Attenuator Truck**, Ford Cummins 5.9L, 175HP dsl and 6 speed trans, 16' steel flatbed, 1999 Energy Absorption 350DX attenuator, Trafcon solar arrowboard, dual rear wheels, electric brakes, 11R22.5 tires, 24,500# GVWR. In fair to good condition with good tires.

**1987 FORD F-600 Attenuator Truck**, V-8 gas and 4 speed trans with 2 speed rear, 13'6" flatbed, Energy Absorption 350DK attenuator, and Trafcon arrowboard. (Truck Not Running - Attenuator Good)



### '99 FORD F-450 AND '94 FORD F-700 BUCKET TRUCKS

## FLATBED DUMP TRUCKS

**1997 FORD F-800 Flatbed Dump**, Ford Cummins 5.9L, 175HP dsl and 6 speed trans, 16' steel flatbed dump, dual rear wheels, electric brakes, 11R22.5 tires, 24,500# GVWR. In fair to good condition with good tires.

**1997 FORD F-800 Flatbed Dump**, Ford Cummins B5.9L, 175HP dsl and 6 speed trans, 16' steel flatbed dump, dual rear wheels, electric brakes, 11R22.5 tires, 24,500# GVWR. In fair to good condition with very good rear and fair front tires.

**1998 FORD F-800 Flatbed Dump**, Ford Cummins 175HP dsl and 6 speed trans, 16' steel flatbed dump, dual rear wheels, electric brakes, 11R22.5 tires, 24,500# GVWR. In fair condition with fair to poor tires. (Dump Hoist Controls Removed)

**1997 FORD F-800 Flatbed Dump**, Ford Cummins 5.9L dsl and 6 speed trans, 16' flatbed dump, dual rear wheels, electric brakes, 11R22.5 tires, 24,500# GVWR. In fair condition with fair tires. (Left Front Axle Disassembled)

**1997 FORD F-800 Flatbed Dump**, Ford Cummins 5.9L dsl and 6 speed trans, 16' flatbed dump, 24,500# GVWR. In poor condition. (Not Running)



### '97 FORD F-800 FLAT DUMPS

## FLATBED AND REEL TRUCKS



### '00 FORD F-450 REEL TRUCK

**1995 FORD F-700 Flatbed Truck**, V-8 gas and Allison auto trans, 22' steel flatbed, dual rear wheels, electric brakes, 11R22.5 tires, 26,000# GVWR. In good condition with good tires.

**1995 FORD F-700 Flatbed Truck**, V-8 gas and Allison auto trans, 16' steel flatbed, dual rear wheels, electric brakes, a.c., 11R22.5 tires, 26,000# GVWR. In fair to good condition with good rear and fair front tires.

**1995 FORD F-700 Flatbed Truck**, V-8 gas and Allison auto trans, 16' flatbed, tow package, dual rear wheels, electric brakes, 11R22.5 tires, 26,000# GVWR. (Not Running)

**1998 FORD F-800 Flatbed Truck**, Ford Cummins 5.9L dsl and 6 speed trans, 16' flatbed. (Parts Only)

**1995 FORD F-700 Flatbed Reel Truck**, V-8 gas and auto trans, 16' flatbed with reel stand, dual rear wheels, electric brakes, 26,800# GVWR. In fair to good condition with fair to good tires.

**(2) 2000 FORD F-450 SD Flatbed Reel Truck**, Powerstroke 7.3L dsl and auto trans, 12'6" flatbed with stake sides and reel stand, dual rear wheels, and 225/70R19.5 tires. In fair condition with good tires. (One Truck Not Running)

**1999 FORD F-450XL SD Flatbed Reel Truck**, Powerstroke 7.3L dsl and 6 speed trans, 14' flatbed with reel stand, dual rear wheels, and a.c.. In fair to good condition with good tires.

## BOAT



**1983 PRIVATEER 2400 Renegade Cuddy Cabin**, hull ID PVT24Z79M83F1BC, Volvo Penta 6 cylinder diesel inboard engine, 8' beam, Furuno GPS navigator, Furuno FCV-667 color video sounder, V-berth cuddy, anchor windlass, LoadRite 30' tri-axle aluminum boat trailer. In fair to good condition. (Note: Not Proper Trailer for Boat)

### '83 PRIVATEER 2400 RENEGADE