

1440 COWPATH RD. • HATFIELD, PA 19440
215/361-9099 • Fax: 215/361-9212
www.hunyady.com



'11 CAT 420E IT 4X4 EXTEND-A-HOE



'16 FORD F-250XL 4X4 PICKUPS



'16 & '15 HYUNDAI 160

PRE-SORTED
FIRST CLASS MAIL
US POSTAGE
PAID
HAVERTOWN, PA
PERMIT #45

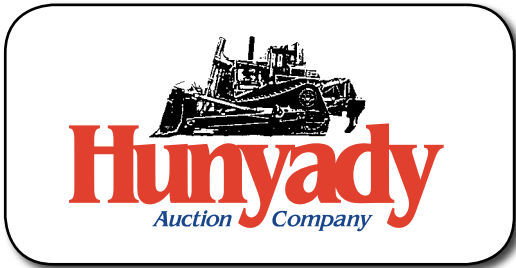


LARGE ABSOLUTE AUCTION COMPLETE LIQUIDATION



**Uniontown, Pennsylvania
(Pittsburgh Area)**

**WEDNESDAY,
APRIL 25, 2018
9:00AM**



NOTICE: Casteel Corporation has been a leading provider of electrical construction services for nearly (40) years, working coast to coast. During this time, they have won numerous awards for safety and workmanship as they have completed major projects throughout the sectors of substation/trans; commercial/industrial; shale gas/petrochemical; wind, & solar renewable energy as well as battery storage systems. At this time, the owners have decided it is time to exit the business in order to pursue other interests. All items are owned by Casteel Corp. and will sell to the highest bidder without minimums, reserves or buyers premiums, with the exception of the Vermeer T744 trencher, which will be offered "subject to owners immediate confirmation"

Auctioneer's Note: Due to the large volume of equipment and tools, it will be necessary to sell with (2) auction rings selling simultaneously. Please plan accordingly. Contact Auction Company for details.

Location: The auction will be held at Casteel's office and yard facility, 127 Atlas Crossings Road, Uniontown, Pennsylvania 15401

Directions: FROM US ROUTE 119 In Uniontown, PA: Follow US Route 119 to Business Route 40 East (West Main Street) proceed on Business Route 40 East for (2.2) miles and turn left onto Atlas Crossings Road. Auction site on left.

Online Bidding: Live internet bidding will be provided by Proxibid. Proxibid will charge an Internet Service Provider Fee of 5% to the successful internet bidder for items over \$10,000 and 10% for items \$10,000 and under, for each lot purchased on-line. All interested internet bidders are required to register w/Proxibid 24 hours prior to the auction at www.proxibid.com/hunyady or call 877-505-7770

Terms: Payment in full is required on sale day by cash, certified funds, or check with a bank letter of guarantee. Sample letter of guarantee: "We hereby guarantee the payment of our customer _____ written on his account up to _____ dollars for purchases at your auction sale on April 25, 2018". All guaranteed checks should be made payable to Hunyady Auction Co.

Sales Tax: Since this contractor is selling items not normally sold in the course of his business, the Commonwealth of Pennsylvania considers this an isolated sale and does not require the auction company to collect sales tax.

Financing: Financing is available, please contact Susan (215) 361-9099 at the auction company for details.

Inspection: Items will be available for inspection beginning one week prior to the auction from 8:00AM to 4:00PM or sale day morning beginning at 7:00AM. The site will be closed Saturday and Sunday, April 21st and 22nd

Removal: After complete payment, all sale items may be removed on sale day as long as the removal activity is not disruptive to the sale and only until 5:00PM. Items may also be removed Thursday and Friday, April 26th and 27th and Monday thru Wednesday, April 30th thru May 2nd, from 8:00AM until 4:00PM. All items must be removed no later than Wednesday, May 2, 2018 by 4:00PM

Phone: (215) 361-9099 • Fax: (215) 361-9212

HUNDREDS OF LOTS OF ELECTRICAL/MECHANICAL TOOLS AND SUPPORT EQUIPMENT

Contact auction company or visit our website to download the detailed inventory list.

Including: (2) Sherman & Reilly S7500 complete Spyder Systems • (30) Conduit and Pipe Benders • (22) Pipe Threaders and (26) Power Drives • Fiber Optic Pulling, Splicing, and Testing Eq • (60+) Crimping Presses and Compression Hand Tools • Wire Pulling, Stringing and Fishing Eq • Hydraulic Power Packs, Porta Powers, and Rams • (60+) Knock-Out Sets • High Voltage Tools and Test Equipment • Load Testing, Torque Wrenches, and Impact Wrenches • (100+) Strap and Chain Hoists and Come-Alongs • Traffic Control Lighting • (20+) Welders – Gas Powered and Electric, and Accessories • Pumps & Generators • (60+) Hammer Drills • (50+) Portable Band Saws • Survey Instruments • Concrete & Masonry Tools • (150+) Ladders, Scaffolding, and Pick Boards • Rescue Devices and Safety Gear • Contractor and Shop Tools and Eq • Large Qty of Electrical Wire, Conduit, Hardware and Fittings.



CRAWLER TRENCHER (OFFERED SUBJECT TO OWNER'S IMMEDIATE CONFIRMATION)



2007 VERMEER T755 Commander III, s/n 1VR2160R171000133, Cat C9 Acert, 275HP dsl and hydraulic drive, T755TR111, 12' trencher bar, s/n 1VR2190S67100133, 8' digging depth, 18" digging chain with dirt segments and cable plow, 24"x12" side discharge conveyor, cable feed rollers, elevating cab, EROPS with heat and AC, (2) front hydraulic stabilizers, and 20" TBG pads. In good condition with good undercarriage. (Meter Reads 2,079 Hours)

16" Rock Segments (Vermeer T755) • **UNUSED** Crumber Attachment (Vermeer T755) • (3 Pallets) Trencher Teeth

LARGE ABSOLUTE AUCTION

HYDRAULIC EXCAVATORS AND ATTACHMENTS

2016 HYUNDAI HX160L, s/n 0003, Perkins dsl, 10'6" dipper stick Geith hydraulic coupler, auxiliary hydraulics, CP 42" digging bucket, rear view camera, EROPS w/heat and AC, and 23.5" TBG pads. In very good condition with very good undercarriage. (Meter Reads 451 Hours)



'16 HYUNDAI HX160L (451 HOURS)

2015 HYUNDAI Robex 160LC-9A, s/n 0193, Perkins dsl, 11'8" dipper stick, Geith hydraulic coupler, auxiliary hydraulics, AIM 14" digging bucket, rear view camera, EROPS w/heat and AC, and 23.5 TBG pads. In very good condition with good to very good undercarriage. (Meter Reads 1,212 Hours)

'15 HYUNDAI ROBEX 160LC-9A (1,212 HOURS)

2010 HYUNDAI Robex 55-9 Mini, s/n 1409, Yanmar dsl, 6'3" dipper stick, manual coupler, auxiliary hydraulics, swing boom, WB 12" digging bucket, 75" backfill blade, EROPS w/heat and AC, and 16" rubber tracks. In good condition with good tracks. (Meter Reads 2,114 Hours)



'10 HYUNDAI ROBEX 55-9

2008 HYUNDAI Robex 55-7A Mini, s/n M80610099, Yanmar dsl, 5' dipper stick, manual coupler, auxiliary hydraulics, swing boom, WB 18" digging bucket with rock teeth, 76" backfill blade, and 16" TBG pads with bolt-on street pads. In good condition with good undercarriage. (Meter Reads 2,449 Hours)



'08 HYUNDAI ROBEX 55-7A

2002 **NPK E210A Hydraulic Demo Hammer**, 3,000 ft lb impact energy (Hyundai 160)

- (2) 2016 **ALLIED Ho-Pac 1600 Hydraulic Plate Compactors** (Hyundai R160)
- **ALLIED BR623 Hydraulic Demo Hammer** (Hyundai 55 Minis) • **ALLIED 13"x28" Hydraulic Plate Compactor** (Hyundai R55 Minis) • **Demo Hammer Moil Point** • **GEITH 18"** (Hyundai 160)
- **AIM 18"** (Hyundai 160) • **WB 12"** (Hyundai R55) • **GEITH 40"** (SK170)
- **GEITH 36"** (SK170) • **24"** (Komatsu PC60) • **TAG 20"** (Wain Roy Coupler)
- **Bucket Teeth and Shanks**



EXCAVATOR ATTACHMENTS

4X4 EXTEND-A-HOE AND ATTACHMENTS

2011 CATERPILLAR 420E IT, 4x4, s/n DAN01179, Cat 3054 dsl and powershift trans, Cat GP loader bucket, hydraulic coupler, front and rear auxiliary hydraulics, EROPS with heat, 12.5/80-18 front and 19.5Lx24 rear tires. In good condition with good tires. (Meter Reads 4,190 Hours)



'11 CAT 420E IT 4X4 EXTEND-A-HOE

- CAT 48"** Fork Attachment (Cat 420E)
- 42" Hanging Bucket Forks (Backhoe)
- 18" Bolt-On Asphalt Cutter • **CAT 14"** (Cat 510) • **GEITH 24"** (JD 410) • 28" (JD 410)

FORKLIFTS AND ATTACHMENTS

1990 NISSAN RGH02A30V, Type G, 5,600 lb Cushion Tired, s/n RGH02-920035, Nissan dual fuel gas and shuttle trans, 187" 3-stage mast, 48" forks, FOPS, 28x9-15 front and 6.50-10-500F rear tires. In good condition with good tires. (Operating on Propane)



'90 NISSAN 5,600 LB

2000 CROWN RR5000 Series, 4,500 lb Standup Rider Electric, s/n 1A216403, 198" 3-stage mast, 48" forks, side shift, and General battery charger. In good condition.

6' to 12', 6,000 lb Forklift Lifting Boom • (2) **STARR 12,000 lb Lifting Devices** (Forklift)

UNUSED TRIMBLE GPS SYSTEM



UNUSED TRIMBLE R4 GPS System: Consisting of: (2) Trimble R4 Rovers s/n 5203481246 & 5203481274 (one programmed as Base Station), Data Logger s/n SSBLC65235, Trimble TDL450H wireless UHF data radio with 4-power settings from 2W-35W, s/n 17469481, dual frequency antennas. In excellent condition.

UNUSED TRIMBLE R4 GPS SYSTEM

GENERATOR, SOLAR LIGHT TOWER, AND AIR COMPRESSORS

2010 KOHLER 40KW Generator, Mitsubishi dsl, Leroy Somer generator, 25KVA transformer with switch gear, mtd on Felling S/A tag-a-long trailer, (3) manual stabilizers, 8,200 lb. GVWR, and 235/80R16 tires. In good condition with good tires.



'10 KOHLER 40KW

2012 LIBERTY LF7K22LPBP T/A Solar Light Plant, (6) solar panels, electric raise light tower with (4) LED lights, Champion gas backup generator, 22' wooden deck, (4) manual stabilizers, 7,000 lb. GVWR, and 205/75R15 tires. In good condition with good tires.

2005 KAESER M57, 210CFM Portable Air Compressor, s/n 1186, Kubota dsl, ST205/75R14 tires. In good condition with good tires.

2006 SULLAIR 185JD, 185CFM Portable Air Compressor, s/n 200605260147, JD dsl, air hose reel. In good condition with good tires.

MILITARY 6X6 TRUCKS

1970 AM General M818, 5 Ton, 6x6 Military Truck Tractor, C12413244, Cummins dsl and 5 spd trans with 2 spd transfer case, front and rear glad hands, fixed 5th wheel, pintle hitch, spring suspension, 80,000 lb. GVWR, and 11.00R20 tires. In good condition with good tires.



(2) OF (3) MILITARY 6X6 TRUCKS

Military 6x6 Truck Tractor, Cummins dsl and Fuller 10 spd trans, manual sliding 5th wheel, Braden chain drive winch, tail roller, spring suspension, pintle hitch, and 11.00R20 tires. In fair to good condition with fair to good tires.

Military M36A3WW, 2.5 Ton, 6x6 T/A Flatbed Truck, Cat dsl and auto trans, 16'10" steel flatbed with (13) position reel stand, front hydraulic winch, spring suspension, and 14.5R20 tires. In good condition with good tires.

DIGGER DERRICKS

2011 ALTEC D4065ATR Rear Center Mtd Digger Derrick, s/n 0211DF0382, 15,000 lb. winch capacity, 25' to 65' 4-section hydraulic boom, insulated upper section, 2-spd digger head, pole grabs with tilt, 2011 INT'L 7400 Work Star T/A Line Body Truck, Int'l Maxxforce 6 cyl dsl and Allison auto trans, (4) hydraulic outriggers, 40,000 lb. rear and 16,000 lb. front axle, 17'6" full line body, 36" rear work platform, auxiliary hydraulics with self-winding hose reel, spring/beam suspension, pintle hitch with air and electric, CC, AC, 56,000 lb. GVWR, 315/80R22.5 front and 11R22.5 rear tires. In good condition with good tires. (Odometer Reads 34,171 Miles) (PTO Meter Reads 1,423 Hours)



'11 ALTEC D4065ATR (34,171 MILES)

2001 ALTEC D4060TR Rear Center Mtd Digger Derrick, s/n 0801CK0191, 10,200 lb. winch capacity, 25' to 50' 4-section hydraulic boom, insulated upper section, pole grabs with tilt, dual hydraulic tool outlets, 2002 FREIGHTLINER FL80, 6x6 Truck, Cat 3126 dsl and Allison auto trans, (4) hydraulic outriggers, 40,000 lb. rear and 18,000 lb. front axle, Altec 17'6" steel body, front bumper winch, capstan winch, pintle hitch with air and electric, spring/beam suspension, CC, AC, 58,000 lb. GVWR, 385/65R22.5 front and 11R22.5 rear tires.



'01 ALTEC D4060TR, 6X6

36" Rock Auger, 2.5" Hex Pocket • 30" Rock Auger, 2.5" Hex Pocket • (2) PENG0 24" Dirt Augers, 2.5" Hex • 10" Auger, 2.5" Hex Pocket • (2) Pole Grabs

PRODUCTION DIGGERS AND AUGERS



STERLING HD MARAUDER

STERLING TD Marauder, s/n 1484, Ford V-8 gas, with 3" Kelly bar, sliding and rotating table, pole grabs, auxiliary hydraulic hose reel, 1977 GMC 7500 T/A Production Digger, V-8 gas and auto trans, 34,000 lb. rear and 10,866 lb. front axle, spring/beam suspension, (2) hydraulic stabilizers, 44,860 lb. GVWR, and 11R22.5 tires. In good condition with fair to good tires.

STERLING HD Marauder, s/n 1409, Ford V-8 gas, with 3" Kelly bar, extending and rotating table, Braden hydraulic winch, 30' pole length, 12' digging depth, 1991 INTERNATIONAL 4900 T/A Production Digger, Int'l DT466 dsl and auto trans, spring/beam suspension, (4) hydraulic outriggers, 385/65R22.5 front and 11R22.5 rear tires. In good condition with good tires.



STERLING TD MARAUDER

42" Rock Auger, 3" square pocket • (2) 36" Rock Augers, 3" square pocket • 30" Rock Auger, 3" square pocket • 24" Rock Auger, 3" square pocket • 30" Rock Auger, 2.5" square pocket • PENG0 24" Rock Auger, 2.5" square pocket • 18" Rock Auger, 2.5" square pocket • (2) 16" Rock Augers, 2.5" square pocket • 24" Dirt Auger, 2.5" square pocket • 36" Core Barrel, 3" square pocket • 24" Core Barrel, 2.5" square pocket • (2) Kelly Bar Extensions • 2.5" to 3" Adaptor

BUCKET TRUCKS

2003 ALTEC AA755L, 55', s/n 1003BZ2584, insulated upper boom, lower boom insert, 600 lb. capacity double man basket, hydraulic tool outlets, material handling jib, mtd on 2004 INTERNATIONAL 4300 S/A Line Body Truck, Int'l DT466, 7.6L dsl and 6 spd trans, 14'4" full line body, cab protector, pintle hitch with air and electric, air brakes, (4) hydraulic outriggers, and 11R22.5 tires. In good condition with good tires.



'03 ALTEC AA755L 55'

2001 ALTEC AA755L, 55', s/n 0101B71707, insulated upper boom, lower boom insert, 300 lb. capacity man basket, upper and lower hydraulic tool outlets, material jib, mtd on 2001 Freightliner FL80 S/A Line Body Truck, Cat 3126 dsl and auto trans, pintle hitch with air and electric, (4) hydraulic outriggers, AC, and 11R22.5 tires. In good condition with good to very good tires.

TRUCK TRACTOR, LOWBOY, LANDOLL, AND FLATBED TRAILER



'02 INT'L 9400I & '98 LANDOLL 30 TON ROLLBACK

2002 INTERNATIONAL 9400i T/A Truck Tractor, Cummins 460HP dsl and Fuller 18 spd trans, wetline, double frame, aluminum wheels and headache rack, pintle hitch with air and electric, 3-stage engine brake, fixed 5th wheel, air ride suspension, 171" wheelbase, CC, AC, 80,000 lb. GVWR, and 11R24.5 tires. In good condition with good tires.

KNUCKLEBOOM AND DERRICK TRUCKS



'86 FORD LTL9000 WITH HIAB KNUCKLEBOOM

1999 FORD F-800 S/A Derrick Truck, Cummins 5.9L dsl and auto trans, Pitman Polecat 12'3" to 18'6" 9,000 lb. hydraulic boom, with boom tip winch and (2) hydraulic stabilizers, 22'6" wooden flatbed with 15" steel sides and ratchet straps, AC, 26,000 lb. GVWR, and 295/75R22.5 tires. In good condition with good tires.

1986 FORD LTL9000 Tri-Axle Knuckleboom Truck, Cat 3406B dsl and Fuller 8LL, 10 spd trans, 1993 Hiab 260 AWV-91, 8-section, hydraulic Knuckleboom, s/n 5364, 22'3" steel flatbed, 23' reel carrier, air ride tag axle, double frame, spring suspension, pintle hitch with air and electric, (2) hydraulic extending outriggers, 57,900 lb. GVWR, 425/65R22.5 front, 11R24.5 rear, and 11R22.5 tag axle tires. In good condition with good tires. (Odometer Reads 045,620 Miles) (Meter Reads 5,554 Hours)



'99 FORD F-800 WITH PITMAN POLECAT

2001 TALBERT T30W55HRG-1-T1, 55 Ton Tri Axle Lowboy Trailer, non ground bearing hydraulic detachable goose neck, 23' level deck, 8'3" over tandems, flip-up airlift 3rd axle, 102" width, air ride suspension, aluminum wheels, chain dogs, outriggers, and 255/70R22.5 tires. In good condition with good tires.



'01 TALBERT 55 TON

1998 LANDOLL 30 Ton Rollback Trailer, 6' upper deck, 38' lower deck, 102" width, front hydraulic winch, air ride suspension, shop made container rollers, 60,000 lb. GVWR, and 10R17.5 tires. In fair to good condition with good tires.

1997 TRAILMOBILE F8IT-5UAJ, 44' T/A Flatbed Trailer, 96" overall width, sliding tandems, aluminum decking, ratchet straps, pole bunks, removable aluminum headboard, spring suspension, and 11R24.5 tires. In good condition with good tires.

DUMP AND STAKE BODY TRUCKS

2016 FORD F-550XL Super Duty 4x4 Dump, Power Stroke 6.7L dsl and auto trans, 11' steel mason dump body, frame mtd storage boxes, pintle and ball hitches, running boards, PW, PL, CC, AC, and 225/70R19.5 tires. In very good condition with very good tires. (Odometer Reads 5,794 Miles) (TITLE DELAY)



16 FORD F-550XL SUPER DUTY 4X4 (5,794 MILES)

2003 FORD F-550XL Super Duty Dump, Triton V-10 gas and auto trans, 14' steel dump body with 22" drop down sides and tailgate, tow package, frame mtd storage boxes, dual rear wheels, CC, AC, and 225/70R19.5 tires. In good condition with good tires.

2016 FORD F-350 Super Duty 4x4 Stake Body, Power Stroke 6.7L dsl and auto trans, 8'10" steel flatbed with 12" solid metal sides, dual tow hitch with electric, PW, PL, CC, AC, and 275/70R18 tires. In good condition with fair to good tires. (Odometer Reads 15,367 Miles) (TITLE DELAY)



16 FORD F-350 SUPER DUTY 4X4

2006 INTERNATIONAL 4300SBA S/A Stake Body Truck, Int'l DT466 dsl and 6 spd trans, 14'6" steel stake body with 40" metal sides, Waltco electric lift gate, spring suspension, pintle hitch with air and electric, air brakes, AC, and 11R22.5 tires. In good condition with good to very good tires. (Odometer Reads 73,146 Miles)

SUBURBAN AND 4X4 PICKUP TRUCKS

2015 CHEVROLET Suburban 1500 LTZ 4x4 SUV, Vortec 5.3L gas and auto trans, 3rd row seating, power package, CC, drop down running boards, leather interior, alloy wheels, and 285/45R22 tires. In very good condition with very good tires. (Odometer Reads 65,056 Miles)



15 CHEVY SUBURBAN 1500 LTZ 4X4

2017 CHEVROLET Silverado 1500 LT 4x4 Crew Cab Pickup, 5.3L gas and auto trans, 8' bed, PW, PL, CC, AC, tow package, and 255/70R17 tires. In very good condition with good to very good tires. (Odometer Reads 35,115 Miles) (TITLE DELAY)



17 CHEVY SILVERADO 1500 LT 4X4

(3) 2016 FORD F-250XL Super Duty 4x4 Pickups, 6.2L gas and auto trans, 8' bed with spray-on liner, running boards, PW, PL, CC, AC, tow package, and 245/75R17 tires. In good condition with very good to excellent tires. (Odometers Read 40,395 Miles; 50,576 Miles, and 52,156 Miles) (2 With Material Racks) (TITLE DELAYS)



(3) 16 FORD F-250XL 4X4 PICKUPS



(3) 14 CHEVY SILVERADO 1500 4X4 PICKUPS

(3) 2014 CHEVROLET Silverado 1500, 4x4 Pickups, 5.3L gas and auto trans, 8' bed with spray-on liner, cross toolbox, tow package, PL, CC, AC, and 265/70R17 tires. In good condition with good tires.

(3) 2010 CHEVROLET Silverado 1500, 4x4 Extended Cab Pickups, 4.8L gas and auto trans, 6'6" bed with liner, cross toolbox, AC, tow package, and 265/70R17 tires. In good condition with good tires.

2008 FORD F-250XLT Super Duty 4x4 Extended Cab Pickup, 5.4L gas and auto trans, 8' bed with liner, cross toolbox, running boards, PW, PL, CC, AC, tow package, and 265/70R17 tires. In good condition with good tires.

2008 CHEVROLET Silverado 1500LS, 4x4 Extended Cab Pickup, Vortec 5.3L gas and auto trans, 6'6" bed with liner, cross toolbox, CC, AC, and 265/70R17 tires. In good condition with good tires.

2008 CHEVROLET Silverado 1500, 4x4 Pickup, Vortec 5.3L gas and auto trans, 8' bed with liner, 100 gallon fuel tank with electric pump, PW, PL, AC, tow package, and 265/70R17 tires. In good condition with good tires.

UTILITY VANS, STRAIGHT TRUCKS, AND PASSENGER BUSES

2014 FORD E-350 Super Duty Utility Van, 5.4L Flex Fuel gas and auto trans, Knapheide 10'8" walk-in utility body, PW, PL, CC, AC, and 245/75R16 tires. In good condition with good to very good tires.

2010 FORD E-350 Utility Van, 5.4L gas and auto trans, Knapheide 10'9" enclosed utility body with cab access door, CC, AC, and 245/75R16 tires. In good condition with good tires.

(2) 2010 FORD E-350 Super Duty Cargo Vans, 5.4L gas and auto trans, Dejana 15' aluminum cargo body with roll-up rear door, electric lift gate, AC, and 225/75R16 tires. In good condition with good tires.

2005 FORD E-350 Super Duty 11-Passenger Bus, 5.4L gas and auto trans, wheel chair access door, rear access door, AC, and 245/75R16 tires. In good condition with very good tires.

1996 FORD E-350, 13-Passenger Bus, 8 cyl dsl and auto trans, 225/75R16 tires. In fair to poor condition with good tires.



14 & 10 FORD E-350 UTILITY VANS



(2) 10 FORD E-350 SUPER DUTY CARGO VANS

REEL AND POLE TRAILERS

1983 AZTEC Tri-Axle Drop Deck Reel Trailer, 9'6" upper deck, 29'6" lower deck, (3) hydraulic reel stands, hydraulic power pack with Robbins twin cyl gas, spring suspension, material baskets, (2) roller stands, 72,000 lb. GVWR, and 10R17.5 tires. In good condition with good tires.



'83 AZTEC TRI-AXLE DROP DECK

HYDRA-DYNE 3RC7646 T/A 3-Reel Hydraulic Reel Trailer, with 9.00x20 tires. In good condition with fair to good tires.

2011 BRINDLE BRT150 S/A Hydraulic Reel Trailer, 4-position reel carrier, 15,000 lb. GVWR, and 11R22.5 tires. In good condition with good tires.

2008 BROOKS BROTHERS SLR716 S/A Hydraulic Reel Trailer, 5-position reel carrier, 6,600 lb. GVWR, and 235/80R16 tires. In good condition with good tires.



(2) OF (3) SINGLE AXLE REEL TRAILERS

S/A Reel Trailer, single reel stand and 205/75R15 tires. In fair to good condition with good tires.

2002 BRINDLE T/A Extendable Pole Trailer, 18' rear deck, spring suspension, and 245/75R16 tires. In good condition with good tires.

1996 T/A Extendable Pole Trailer, 10' rear deck, air brakes, spring suspension, and 245/75R16 tires. In good condition with good tires.

Shop Made 25' Pole Trailer, 95" overall width, spring suspension, and 9.00x20 tires. In fair to good condition with fair to good tires.

2007 PENG0 TR-RC7-96-62 S/A Reel Trailer, single reel stand with manual brake, and 8.25x15 tires. In good condition with good tires.

1984 PENG0 TRRC-96-62 S/A Reel Trailer, single reel with manual brake, 9,080 lb. GVWR, and 8.25R15 tires. In good condition with good tires.

ENCLOSED CARGO AND EQUIPMENT TRAILERS

2016 UNITED UXT-8.520TA35, 20' T/A Cargo Trailer, 20' aluminum cargo body with fold down rear and curbside door, electric outlets, electric heat, exterior work lighting, alloy wheels, 7,000 lb. GVWR, and 205/75R15 tires. In good to very good condition with very good tires.



'16 UNITED 20'

(2) 2016 HOMESTEADER 716CT, 16' T/A Cargo Trailers, 16' aluminum cargo body, fold down rear and curbside door, 7,000 lb. GVWR, and 205/75D15 tires. In good condition with good tires.



'16 HOMESTEADER 16'

2012 UNITED 16' T/A Cargo Trailer, 16'x7' aluminum cargo body, swing rear and curbside door, aluminum wheels, electric outlets, electric heat, shelving, (4) leveling jacks, 7,000 lb. GVWR, and 205/75R15 tires. In good condition with good tires.

2010 UNITED 18' T/A Cargo Trailer, 18'x8.5' aluminum cargo body with fold down rear and curbside door, electric outlets, lights, electric heat, aluminum wheels, 7,000 lb. GVWR, and 205/75R15 tires. In good condition with good tires.

2010 HAULMARK 16' T/A Cargo Trailer, aluminum cargo body, fold down rear and curbside door, 7,000 lb. GVWR, and 205/75R14 tires. In good condition with good tires.

2007 CARGO KING 20' T/A Cargo Trailer, 20'x7' aluminum cargo body, swing rear and curbside doors, electric outlets, lights, electric heat, 7,000 lb. GVWR, and 205/75D15 tires. In good condition with good tires.

2002 CORNELIUS CornPro 16' T/A Cargo Trailer, 16'x7' steel cargo body with swing rear and curbside doors, spring suspension, 12,000 lb. GVWR, and 235/85R16 tires. In good condition with good tires.



'02 CORNELIUS 16'

2005 ROLLS RITE T/A Tag-A-Long Trailer, 20' level deck, 5' beavertail, 5' ramps, 96" deck width, 102" overall width, spring suspension, electric brakes, 25,900 lb. GVWR, and 235/80R16 tires. In good condition with good tires.

2009 T/A Tag-A-Long Trailer, 16' wooden deck, 82" deck width, 100" overall width, 4' ramps, electric brakes, spring suspension, 7,000 lb. GVWR, and 205/75D15 tires. In fair to good condition with fair to good tires.

2001 PEQUEA T/A Tag-A-Long Trailer, 16' level deck, 4'3" beavertail with leveling lock, 93" deck width, 105" overall width, 46" ramps, stake pockets, spring suspension, 10,000 lb. GVWR, and 245/75R16 tires. In good condition with good tires.

MEB T/A Tag-A-Long Trailer, 16' level deck, 24" beavertail, 52" ramps, 84" deck width, 102" overall width, 7,000 lb. GVWR, and 205/75R15 tires. In fair to good condition with good tires.

(22) 40' OFFICE AND STORAGE CONTAINERS

40' Overseas Storage Container/Office, with 10' rear storage area, 30' front office with insulation, electric heat, window AC unit, lights, electric outlets, side window, and man door.

(3) 40' Overseas Storage Containers/Office, with 17' rear storage area, 27' front office with insulation, electric heat, window AC unit, lights, electric outlets, side window, and man door.

(8) 40' Overseas Storage Containers, insulated with electric heat, window AC unit, lights, side window, and man door.

(5) 40' Overseas Storage Containers, with shelves • (5) 20' Overseas Storage Containers

