

1440 COWPATH RD. • HATFIELD, PA 19440
215/361-9099 • Fax: 215/361-9212
www.hunyady.com



'11 PETERBILT 389 & '10 MAC 34' FRAMELESS DUMP



P&H OMEGA 18 TON

PRE-SORTED
FIRST CLASS MAIL
US POSTAGE
PAID
HAVERTOWN, PA
PERMIT #45



'16 MACK GU713



ABSOLUTE ONLINE AUCTION **EVERYTHING SELLS TO THE HIGHEST** **BIDDER REGARDLESS OF PRICE!**

(2) LOCATIONS - (2) CONSIGNORS

(5) OF (9)
00 MACK RD688S

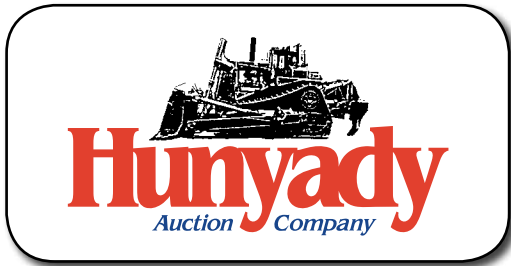


BIDDING OPENS
THURSDAY, JULY 12, 2018

BIDDING CLOSES
THURSDAY, JULY 19, 2018
@ 3:00PM EASTERN

Glenn O. Hawbaker, Inc.
Bellefonte, PA (State College Area)
Signature Financial
Hatfield, PA (Philadelphia Area)

ABSOLUTE ONLINE AUCTION



BIDDING OPENS THURSDAY, JULY 12, 2018

BIDDING CLOSSES THURSDAY, JULY 19, 2018 @ 3:00PM EASTERN

Notice: Glenn O. Hawbaker, Inc. is currently realigning their dump truck fleet and has determined specific trucks to be surplus. Additionally, Signature Financial has included (6) items to be sold in this offering as well. These items will be offered from (2) locations and will be sold absolute, to the highest bidder regardless of price, via On-Line Auction.

Locations: HAWBAKER: Trucks and equipment will be located at 711 East College Ave, Bellefonte, PA 16823 • **SIGNATURE BANK:** Trucks will be located 501 Fairgrounds Road, Hatfield, PA 19440 (inspection by appointment only – see below)

Inspection: HAWBAKER trucks and equipment will be available for inspection from Thursday July 12th through Thursday July 19th, Monday – Friday from 8am to 3pm.

SIGNATURE trucks will be available for inspection during the same timeframe indicated above, however these must be inspected by appointment only. Please contact Hunyady at 215-361-9099 to schedule inspection.

Terms: A 5% internet service fee will be added to the high bidder invoice. Payment in full is required by Friday, July 20, 2018 at 3:00PM Eastern, in US dollars, via wire transfer. For any other form of payment contact auction company. **Absolutely NO PAYMENTS will be accepted at the Auction Sites.**

Sales Tax: Since the items being sold are motor vehicles, sales tax will be due at the time of registration. No sales tax will be due at time of purchase.

Removal: After complete payment, all sale items may be removed Friday, July 20th or Monday thru Wednesday, July 23rd thru the 25th, from 8:00AM to 3:00PM. All items must be removed no later than Wednesday, July 25, 2018 at 3:00PM EDT. **There will be no removal Saturday or Sunday, July 21st and 22nd.**

Shipping and Hauling: Buyer is fully responsible for shipping/hauling of their items, at their own expense.

Motor Vehicle Titles: Following complete payment, motor vehicle titles will be mailed via overnight courier, within (2) business days. An administrative fee of \$25.00 per title will be charged. Local buyers can pick up titles, in person, at the Hunyady Auction main office.

Loading: Hunyady Auction Co. will provide personnel to assist in loading during the advertised removal dates ONLY. There are no loading docks, ramps, or assist machines for loading. Trailers must be detachable lowboys or equipped with ramps.

Sale Site Phone: (215) 361-9099 • Sale Site Fax: (215) 361-9212

LOCATED IN BELLEFONTE, PENNSYLVANIA

(Current Rebuild/Repair Info and Odometer Readings Can Be Found at Our Website by Visiting The Photo Library)

CRANES AND AERIAL LIFTS



1981 P&H Omega 25, 25 Ton Rough Terrain Crane, s/n 51331, Detroit diesel and powershift trans, 32' – 80' 3-section boom, single hoist, Hirschmann PRS40EZ anti-two block system, 25 ton hook block, enclosed cab with heat, (4) hydraulic outriggers, and 20.5-25 tires. In good condition with good to very good tires.

1978 P&H Omega 18, 18 Ton Rough Terrain Crane, s/n 46414, Detroit diesel and powershift trans, 26.23' – 62.23' 3-section hydraulic boom, LSI GS375 anti-two block system, single hoist, Johnson 20 ton 3-sheave hook block, enclosed cab with heat, (4) hydraulic outriggers, and 20.5-25 tires. In good condition with good tires.

P&H OMEGA 25 TON



P&H OMEGA 18 TON

1998 JLG 80HX, 4x4 Aerial Lift, s/n 074863, Deutz diesel and hydrostatic trans, 80' platform height, 3-section straight boom, 1,000 lb platform capacity, platform level and rotate, electrical tool outlets, and 15-19.5 tires. In good condition with good tires.



JLG 80HX 4X4

Glenn O. Hawbaker, Inc.
Bellefonte, PA
(State College Area)

Signature Financial
Hatfield, PA
(Philadelphia Area)

LOCATED IN HATFIELD, PENNSYLVANIA

DUMP TRUCKS



'16 MACK GU713

2016 MACK GU713 Granite Tri-Axle, Mack MP8, 455HP diesel and Maxitorque ES, T310M/MLR 10 spd trans, with multispeed reverse, Beau-Roc 17'6" steel dump body with air tailgate and power tarp, 46,000 lb rears, 18,000 lb front axle, central hydraulics, 2-stage engine brake, inter-axle lock, Mack M-Ride spring suspension, aluminum wheels, heated/power mirrors, cc, PW, PL, ac, 385/65R22.5 front and lift, and 11R24.5 rear tires. In good condition with fair and good tires. (Odometer Reads 142,168 Miles)



'14 MACK GU713

2014 MACK GU713 Tri-Axle, Mack MP8, 455HP diesel and Eaton Fuller 8LL trans, Beau-Roc 17'6" steel dump body with power tarp and air gate, 46,000 lb rears 18,000 lb front and 20,000 lb steerable lift axle, camelback suspension, 2-stage engine brake, inter axle lock, aluminum wheels, ac, cc, pw, pl, heated mirrors, 385/65R22.5 front and lift, and 12R24.5 rear tires. In good condition with fair to good tires. (Odometer Reads 298,014 Miles) (Transmission Issues-Currently Being Diagnosed @ Mack Dealer-Check Back for Details)



'16 KENWORTH T880

2016 KENWORTH T880 Tri-Axle, Cummins ISX15, 500HP diesel and Eaton Fuller 8LL, 10 spd trans, Beau-Roc 17'6" steel dump body with electric tarp and air tailgate, 46,000 lb rears, 18,740 lb front and 18,500 lb steerable lift axle, Chalmers 800 series walking beam suspension, 3-stage engine brake, full locking differentials, aluminum wheels, ac, cc, pw, pl, heated power mirrors, 385/65R22.5 front and lift, and 11R24.5 rear tires. In good to very good condition with fair and good tires. (Odometer Reads 233,427 Miles)



'13 MACK GU713

2013 MACK GU713 Granite Tri-Axle, Mack MP8, 455HP diesel and Eaton Fuller 13 spd trans, Beau-Roc 17'6" steel dump body with power tarp and air tailgate, 44,000 lb rears, 18,000 lb front and 22,000 lb steerable lift axle, air ride suspension, 3-stage engine brake, inter-axle lock, differential lock, snowplow frame, aluminum wheels, heated mirrors, cc, pw, pl, power mirrors, ac, and 385/65R22.5 front and lift, and 12R24.5 rear tires. In good condition with fair tires. (Odometer Reads 388,123 Miles)

TRUCK TRACTOR AND DUMP TRAILER

2011 PETERBILT 389 Tandem Axle, Cummins TSX525, 525HP diesel and Eaton Fuller RTL018918B, 18 spd trans, 46,000 lb rears and 12,000 lb front axle, double frame, Jost locking 5th wheel, air ride suspension, wetline, full locking differentials, 3-stage engine brake, heated mirrors, full fiberglass fenders, chrome deck plate, chrome stack extensions, aluminum wheels, LED lighting, cc, ac, pw, pl, Atlas Elite II air controlled seats, and 11R24.5 tires. In good to very good condition with very good tires. (Odometer Reads 246,025 Miles)



'11 PETERBILT 389

2010 MAC 34' Frameless Half-Round Steel Dump Trailer, 2-way aluminum tailgate, power tarp, aluminum sub-frame, aluminum wheels, air ride suspension, 80,000 lb GVWR, and 11R24.5 tires. In good condition with very good tires.



'10 MAC 34' FRAMELESS DUMP

LOCATED IN BELLEFONTE, PENNSYLVANIA**(Current Rebuild/Repair Info and Odometer Readings Can Be Found at Our Website by Visiting The Photo Library)****DUMP TRUCKS****(1) OF (9) `00 MACK RD688S**

(9) 2000 MACK RD688S Tri-Axles, Mack E-7, 350HP diesel and Mack T2130, 13 spd extended range splitter trans, Alumatech 17" aluminum half-round dump body with split tailgate and power tarp, 44,000 lb rears, 18,000 lb front and lift axles, 2-stage engine brake, Mack air ride suspension, aluminum wheels, ac, cc, heated mirrors, 315/80R22.5 front and lift, and 11R24.5 rear tires.

**`99 & `95 MACK RD688S**

1999 MACK RD688S Tri-Axle, Mack E-7, 350HP diesel and Eaton Fuller 8LL trans, Heil 17" steel dump body with 2-way tailgate and power tarp, 44,000 lb rears, 16,000 lb lift and 14,060 lb front axle, 2-stage engine brake, camelback spring suspension, steel wheels, aluminum front wheels, ac, cc, 11R24.5 front, rear, and lift tires. In good condition with good tires.

1995 MACK RD688S Tri-Axle, Mack E-7, 350HP diesel and Eaton Fuller 8LL trans, Heil 17"6" steel dump body with air tailgate and power tarp, 44,000 lb rears and 18,000 lb front and lift axles, 2-stage engine brake, central hydraulics, (cab controls removed), camelback suspension, dual tires on lift axle, steel wheels, ac, 11R22.5 front and lift, and 11R24.5 rear tires. In good condition with good tires.

**`00 MACK RD688S**

2000 MACK RD688S Tri-Axle, Mack E-7, 400HP diesel and Maxitorque T2130, 13 spd extended range splitter trans, J&J 17"6" aluminum box dump body with air tailgate (no tarp), 44,000 lb rears, 18,000 lb front and lift axles, 2-stage engine brake, Mack air ride suspension, aluminum wheels, ac, cc, heated mirrors, 315/80R22.5 front and lift, and 11R24.5 rear tires. In good condition with good tires.

**(1) OF (2) `95 MACK CL713**

1995 MACK CL713 Tri-Axle, Mack E-7, 454HP diesel and Eaton Fuller 8LL trans, Ti-Brook 19' aluminum box dump body with air tailgate and power tarp, 44,000 lb rears, 20,000 lb lift and 14,060 front axle, 2-stage engine brake, Mack air ride suspension, dual tires on lift axle, aluminum wheels, ac, cc, power locks, heated mirrors, 315/80R22.5 front and lift, and 11R24.5 rear tires. In good condition with good tires.

1995 MACK CL713 Tri-Axle, Mack E-7, 427HP diesel and Eaton Fuller 8LL trans, Thiele 18'6" aluminum box dump body with split tailgate and power tarp, 44,000 lb rears, 20,000 lb lift and 14,060 lb front axle, 2-stage engine brake, power divider, Mack air ride suspension, steel wheels, ac, cc, heated mirrors, 315/80R22.5 front and lift, and 11R24.5 rear tires. In good condition with good to very good tires.

**(1) OF (2) `97 MACK RD688S**

(2) 1997 MACK RD688S Tri-Axle, Mack E-7, 400HP diesel, Maxitorque T2130, 13 spd extended range splitter trans and Eaton Fuller 8LL trans, Alumatech 17" aluminum half-round dump body with split tailgate and power tarp, 44,000 lb rears, 18,000 lb front and lift axles, 2-stage engine brake, Mack air ride suspension, aluminum wheels, ac, cc, heated mirrors, and 315/80R22.5 front and 11R24.5 rear tires. In good condition with good tires.

1990 MACK DM690S Tandem-Axle, Mack E-7, 300HP diesel and Mack 7 spd trans, 17" steel dump body, 44,000 lb rears, 18,000 lb front axle, 2-stage engine brake, central hydraulics, camelback spring suspension, and 11R24.5 tires. In fair to good condition with good tires.