

1440 COWPATH RD. • HATFIELD, PA 19440
215/361-9099 • Fax: 215/361-9212
www.hunyady.com



'08 FORD F-250 LARIAT 4X4



100+ WELDERS

PRE-SORTED
FIRST CLASS MAIL
US POSTAGE
PAID
HAVERTOWN, PA
PERMIT #45

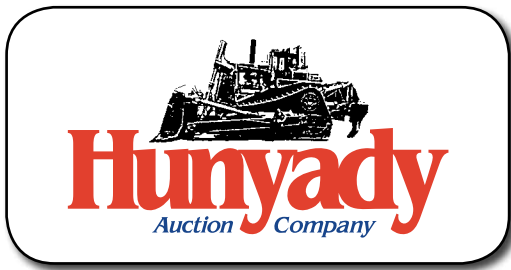


CLARK 30,000#



ABSOLUTE AUCTION
BY COURT ORDER
Lake Erie Ship Repair & Fabrication, LLC
Ashtabula, Ohio
WEDNESDAY,
MAY 16, 2018 - 9:00AM

ABSOLUTE AUCTION



Lake Erie Ship Repair & Fabrication, LLC



Notice: In accordance with Ashtabula County, Ohio Case #217CV650 all assets owned by Lake Erie Ship repair will be liquidated via absolute auction. All items are owned by Lake Erie Ship Repair and will sell to the highest bidder, regardless of price and without minimums, reserves, or Buyer's Premium!

Location: Lake Erie Ship Repair's shop and yard facility located at 4200 Benefit Avenue, Ashtabula, Ohio 44004

Directions: FROM INTERSTATE 90: Exit #228 (Ohio Route 11/Youngstown/Ashtabula) Merge onto Ohio Route 11 North toward Ashtabula. Proceed (3) miles and take Exit #97 (US Route 20/Ashtabula) At end of ramp turn left onto US Route 20 West. Continue (2.4) miles and turn right onto Benefit Avenue, proceed (0.5) miles to sale site on right.

Online Bidding: Live internet bidding will be provided by Proxibid. Proxibid will charge an Internet Service Provider Fee of 5% to the successful internet bidder for items over \$10,000 and 10% for items \$10,000 and under, for each lot purchased on-line. All interested internet bidders are required to register w/Proxibid 24 hours prior to the auction at www.proxibid.com/hunyady or call 877-505-7770

Terms: Payment in full is required on sale day by cash, certified funds, or check with a bank letter of guarantee. Sample letter of guarantee: "We hereby guarantee the payment of our customer _____ written on his account up to _____ dollars for purchases at your auction sale on May 16, 2018". All guaranteed checks should be made payable to Hunyady Auction Co.

Sales Tax: Since this contractor is selling items not normally sold in the course of his business, the state of Ohio considers this an isolated sale and does not require the auction company to collect sales tax.

Financing: Financing is available, please contact Susan (215) 361-9099 at the auction company for details.

Inspection: Items will be available for inspection beginning one week prior to the auction from 8:00AM to 4:00PM or sale day morning beginning at 7:00AM. This site will be closed Saturday, Sunday, May 12th and 13th

Removal: After complete payment, all sale items may be removed on sale day as long as the removal activity is not disruptive to the sale and only until 5:00PM. Items may also be removed Thursday and Friday, May 17th and 18th and Monday thru Wednesday, May 21st thru 23rd from 8:00AM until 4:00PM. All items must be removed no later than Wednesday, May 23rd, 2018 by 4:00PM

Sale Site Phone: (215) 361-9099 • Sale Site Fax: (215) 361-9212

GENERATORS



2006 MULTIQUIP WHISPERWATT DCA-70SSIU, 56KW Skid Mounted, s/n 7350046, Isuzu FF-4BGIT dsl, 3 phase. In good condition.

NORTHERN LIGHTS M854B-20N, 7KW Generator, dsl • **Generator, dsl** • **WINCO HP6000, 6,000 Watt Portable Generator**, gas • **HONDA EB3500X, 3,500 Watt Portable Generator**, gas • **POWERMATE 3250, 3,250 Watt Portable Generator**, gas • **TITAN 3000 Watt Generator**, gas

06 MQ 56KW

OFFICE EQUIPMENT AND FURNITURE

ASUS M32 Computer • (2) **HP Pavilion Computers**, with flat screen monitors • **DELL Computer**, with (2) flat screen monitors • (4) **HP 110 Computers**, with flat screen monitors • (4) **Printer/Scanner/Copiers** • **DYNEX 32" TV** • **GW Video Recorder** • (7) **Wooden Desks**, with return and chairs • (19) **File Cabinets** • **Conference Table**, with (6) chairs • **Wooden Credenza** • (4) **Wooden Bookcases** • **Metal Plan Cabinet** • (3) **Wooden Picnic Tables** • **Refrigerator** • **Microwave** • **Dehumidifier** • **Assorted Chairs**



OFFICE EQUIPMENT AND FURNITURE

SHOP AND CONTRACTORS TOOLS



CLEMCO 2452 SANDBLAST POT

CLEMCO INDUSTRIES 2452 Portable Sandblast Pot, 600# capacity, with accessories • **KELCO Portable Sandblast Pot** • **LANDA OHW4-3000 Skid Mounted Hot Pressure Washer**, 3,000 BTU, 220 degree, with electric motor and hose reel • **Portable Sandblast Pot** • 10 Gallon Sandblast Pot • **GRACO X-Treme Bull Dog Portable Pneumatic Paint Sprayer** • **DEVILBISS Pneumatic Paint Pot** • **BINKS Portable Pneumatic Paint Sprayer** • **Portable Pneumatic Paint Sprayer** • **GRACO Pneumatic 2-Part Epoxy Sprayer** • **Assorted Paints** • 3,000 PSI **Portable Pressure Washer** • **POWER STROKE 3,000 PSI Pressure Washer** • (2) **RIDGID 535 Portable Electric Pipe Threaders** • **RIDGID 300 Electric Pipe Threader** • **RIDGID 802 Portable Electric Pipe Threader** • (3) **RIDGID Manual Pipe Threaders** • (5) **RIDGID Pipe Stands** • **BOSCH Brute Electric Paving Breaker** • (2) **Chain Saws** • (3) **Leaf Blowers** • (2) **GORMAN-RUPP 62E311-B, 6"x8" Centrifugal Water Pumps**, 5HP electric motors • (3) 2" **Trash Pumps** • 2" **Centrifugal Pump** • **TENNANT 6080 Walk Behind Floor Sweeper**, battery powered / electric, with curb broom • (3) **GENIE SL-24, 24' Material Lifts** • (90) 5' **Scaffolding Sections**, with cross braces and accessories • (5) 10' **Aluminum Pic Boards** • 17' **Portable Electric Propelled Stairs** • (4) 10' **Portable Stairs** • **Assorted Aluminum & Fiberglass Step & Extension Ladders** • **Safety Harnesses & Lanyards** • (2) 12-Volt **Electric Winches** • (2) **Manual Crank Winches** • (6) **Assorted Magnetic Drills** • **MILWAUKEE 1/2" Hole Hog** • (4) 1/2" **Electric Drills** • (10) **Angle Grinders** • (8) **Pneumatic Grinders** • C-P 1" **Pneumatic Impact Wrench** • 3/4" **Electric Impact Wrench** • 1/2" **Electric Impact Wrench** • 3/8" **Pneumatic Impact Wrench** • (2) **Porta Band Saws** • **Pneumatic Cutoff Saw** • (3) **Reciprocating Saws** • (4) 14" **Chop Saws** • **Circular Saw** • (4) **Pneumatic Chipping Hammers** • **Pneumatic Scler Kit** • (2) **Pneumatic Sanders** • **PORTER Cordless Tool Kit** • **Large Quantity of Hand Tools:** combination wrenches, sockets, hammers, screwdrivers, etc. • **BW Gas Alert Max XT II Gas Detector** • (5) **Portable Space Heaters** • (3) **Portable Scales** • (4) **Shop Fans** • (7) **Electric Blowers** • **KOBALT HG2000 LCD Heat Gun** • **Portable Work Lights** • (7) **Shop Vacs** • **Pallet Jack** • 50 Ton **Porta Power** • **Floor Jacks** • (5) **Bottle Jacks** • (4) **Vises** • (17 Sections) **Pallet Racking** • (15) **Job Boxes** • **Steel Cabinets, Storage Racks, Tool Cabinets, Work Benches, and Shop & Material Carts** • (6) **UNUSED 3/4" Turnbuckles** • **Large Quantity of Spreader Bars** • (15) **Manual Chain Hoists** • (9) **Chain Come-A-Longs** • **Assorted Chains & Slings** • (12) **Machinery Skates** • (2) **Flammable Cabinets** • (2) **Banding Carts** • (5) **Drum Carts** • (4) **Hand Carts** • (28) **Steel Horses** • **G.E. Substation 200 to 1200 Amp Enclosure (Damaged)**

ABSOLUTE AUCTION

ROUGH TERRAIN CRANE AND FORKLIFTS



GROVE RT58, 15 TON

1986 CLARK C500YS300, 30,000# Pneumatic Tired, s/n Y1625-19-6585CB, Perkins dsl and powershift trans, e/w 92" hydraulic adjustable forks, 204" 2-stage mast, enclosed FOPS cab, and 11.00-20 tires. In fair to good condition with good and fair tires.

GROVE RT58, 15 Ton Rough Terrain Crane, s/n 41087, Detroit 4-53 dsl and powershift trans, e/w 18'-42' 3-section hydraulic boom, 2-sheave hook block, (4) hydraulic outriggers, enclosed cab, and 14.00-24 tires. In good condition with good tires.



CLARK 30,000#

1990 HYSTER H250E, 23,000# Pneumatic Tired, s/n B007E03998L, gas and shuttle trans, e/w 96" forks, 278" 2-stage mast, enclosed cab, and 10.00-20 tires. In poor condition with fair tires. (Not Running; Oil Leaks; Bad Flywheel)

HYSTER H150F, 15,000#, s/n D006D04370Y, gas and shuttle trans, e/w 62" forks, 2-stage mast, FOPS canopy, and 8.25-15 tires. In fair condition with good front and fair rear tires.

1995 YALE GLC100LONSBEA080, 10,000# Solid Tired, s/n 494790, LP gas and shuttle trans, e/w 60" forks and 161" 3-stage mast. In good condition with fair tires.

HYSTER J40XMT, 3,650# Solid Tired, s/n H160N01731X, battery powered with shuttle trans, e/w 42" forks, 129" 2-stage mast, side shift, battery charger, and FOPS canopy. In good condition with fair tires.

CLARK P60, 6,000# Electric Pallet Lift, s/n P455-0772-6615FA, battery powered, e/w 48" forks and battery charger • 70" Hydraulic Adjustable Carriage & Forks • Dump Hoppers • Barrel Clamp • 4'6"x3' Man/Material Basket

TRUCKS, TRAILERS, AND STORAGE CONTAINERS



'00 FORD F-550 (WELDER SOLD SEPARATELY)

2006 FORD F-250XL Super Duty Crew Cab Utility Truck, Powerstroke 6.0L dsl and auto trans, e/w Knapheide 8' open utility body, tow package, ac, cruise control, and 245/75R17 tires. In fair condition with good tires.

2008 FORD F-250 Lariat 4x4 Crew Cab Pickup Truck, Powerstroke 6.4L dsl and auto trans, e/w 6'6" bed, leather interior, sunroof, aluminum wheels, power package, ac, cruise control, and 35x12.50 R20 tires. In good condition with good tires.

2000 FORD F-550 Service Truck, Powerstroke dsl and 5 speed trans, e/w 11' open service body, Auto Crane service crane, gas powered air compressor, work bumper with vise, dual rear wheels, and ac.



'06 FORD F-250XL

1999 DODGE Ram 2500 Laramie SLT 4x4 Pickup Truck, V-8 gas and auto trans, e/w 8' bed, 80 gallon auxiliary fuel tank, Western 7.5' snowplow, running boards, power locks and windows, ac, and 245/75R16 tires. In fair to poor condition with fair tires. (Oil Leak) (Power Steering Problems)

1990 FORD F-450 S/A Stake Body Truck, Powerstroke dsl and 4 speed trans, e/w 10' steel flatbed with 40" steel stake sides, dual rear wheels, tow package, ac, and 215/85R16 tires. In fair condition with good tires.

1997 GMC 3500 Van Body Truck, 4.3L gas and auto trans, e/w 10' van body with rollup rear door, and ac. (Fuel Tank Removed) (Not Running)

1990 CZ ENGINEERING 20 Ton T/A Tag-A-Long Trailer, e/w 20' deck, 5' beavertail, ramps. In good condition with good tires.

(2) 8'x20' Overseas Storage Containers. In good condition.



'90 FORD F-450

TANK FABRICATION EQUIPMENT



DEUMA MBLR10S

rotating system, with rollers and hydraulic height adjustment, (2) floor mounted hydraulic adjustment yokes, (3) 40"Wx6'5" tapered manual after conveyor, and hydraulic power unit. In good condition.

52" Hydraulic Alignment Clamping System, e/w support frame base, 12'x32" conveyor table, and hydraulic power unit. In good condition. (Use For 48" Diameter Tanks)

REED / WEBB Tank External Welding System, e/w (2) Webb overhead pivoting arms and track mounted mig wire feed, height adjustable, Webb 45" electric power roller with 12" diameter capacity, Webb 18" x 45" idler roller assembly, on track system, Idealarc R3S-800 welder, and Invincible fume recovery system. In fair condition.

JETLINE SWC-3 Longitudinal Seam Welding System, s/n 7471, 25' width, with Lincoln NA-3N wire feeder and Weld Engineering fume recovery system. In fair condition.

DEUMA Type MBLR10S Large Tank Internal Welding and Clamping System, s/n 4012, e/w Lincoln DC600 electric welder, Lincoln NA-3N wire feeder, Lincoln Power Flux system, Invincible flux vacuum recovery system, 8'6"x32" adjustable roller cradle, 11' diameter hydraulic alignment clamp, 8'4" diameter hydraulic alignment clamp, Reeves clamp



REED-WEBB TANK WELDER

Hydraulic Tank Rotating System, e/w 18"x56" vertical main beam, (6) 5"x8"x17" steel support H-beams, (3) 12"x8"x19" steel H-support cross beams, (4) 7" diameter X 36" telescopic hydraulic cylinders, hydraulic operated 14 ton chain hoist with manual trolley, hanging powerless chain hoist with manual trolley, complete with hydraulic controls. In good condition.

VENUS-GUSMER Fiberglass Injection System/ Chop Gun, s/n 6432591, e/w electric hydraulic controller, discharge nozzle, and (2) chemical canisters, track system

CHORE BOY Portable Pipe Line Milking System, 2HP electric motor and vacuum pump.

(2 sets) **PANDJIRIS IR10**, 16" Diameter Power Rolls, with (4) steel caster wheels and 8' of track • (1 set) **PANDJIRIS 12" Diameter Tanker Rolls** • (1 set) 20" Diameter Adjustable Power Rolls • (1 set) **RANSOME 16" Diameter Power Rolls** • (1 set) **WEBB 12" Diameter Power Rolls** • Assorted Sets of **WEBB Power Rolls** • (2 sets) 12" Diameter Pneumatic Power Rolls • (2 sets) 12" Diameter Power Rolls • (1 set) 16" Diameter Idler Rolls • (2 sets) **WEBB 12" Diameter Idler Rolls** • (2) 6'x3' Tank Cradles • Assorted **WEBB Power Rolls** • Portable Pneumatic Pressure Testing Unit • Stationary Pneumatic Pressure Testing Unit • (4) 55 Gallon Drums Corrosion ISO Resin • (18 Boxes) **JUSHI Fiberglass**



TANK ROTATING SYSTEM



POWER ROLLS

STEEL FABRICATION EQUIPMENT



BERTSCH PLATE ROLL

45B-187 Beveler, 1/4" capacity • **REED** M2 Power Beveler, s/n 5692, 1/4" capacity and 6"x20" roll table • **JANCY ENGINEERING CO.** BM20 Beveling Machine, s/n 861090

Plate Rolls, Flangers, and Bevelers:
BERTSCH 11-1/2" x 10' Mechanical Plate Roll, s/n M-9985 • **WEBB** R3L-113, 5 3/4" x 8' Mechanical Plate Roll • **BLUE VALLEY MACHINE & MANUFACTURING CO.** 4-466 Flanger, 3/8" capacity • **BLUE VALLEY MACHINE & MANUFACTURING CO.** 2-786 Flanger, 10-gauge capacity • **BLUE VALLEY MACHINE & MANUFACTURING CO.**



BLUE VALLEY 4-466

Iron Worker, Plate Shear, and Press Brake:

BUFFALO Universal 65U11905 Iron Worker, order no. 2800214, with 1 1/6" punch, 6x6x1/2" bar cutter, 3/4"x9 1/4" shear, V-notching and coping, and tooling • **WYSONG** 1238 Hydraulic Plate Shear, s/n P35-173, 12' width, for 3/8" plate, digital controls and shield • **CINCINNATI** 10' Press Brake, s/n 17830, with material scanner and manual controls (No Shields)



BUFFALO IRON WORKER



WYSONG PLATE SHEAR

CINCINNATI PRESS BRAKE



THOMAS MACHINE BENDER



LANDIS Triple Mechanical Threader • **THOMAS MACHINE** No. 2 Angle Iron Bender Machine, s/n 8191, 3"x3"x3/8" capacity • **WARNER-WASEY** No. 2A Turret Lathe, 12"x27", with 2HP electric motor, taper attachment, 8" 3-jaw chuck, and 6-position tail stock • **TORCHMATE** CNC Cutting System, with 8'x15' table, 6-slug, drawings, single tip power, x and y torch, and PC controls with Dell Dimension computer • Shop Built 3'x4' Burning Table • **HANDLING SYSTEMS** Swinging Pedestal Hoist, s/n 830314-1, with Demag 1/2 ton electric chain hoist with manual trolley • **HEM** V100LM-2 Tilting Band Saw, 18"x20", with lubrication, air vise, and (3) 21"x10' roller tables. • **KBC MACHINE CO.** 20" Horizontal Band Saw, with coolant system • **RAMCO** RS-90P Horizontal Band Saw, with coolant system • **CAROLINA TOOL** HD10, 16' Horizontal Band Saw • **ROCKWELL / DELTA** Series 15-655, 15" Pedestal Drill Press • **WILTON** 5816, 8" Pedestal Drill Press • **WALKER TURNER** POB10, 10" Pedestal Drill Press • 6" Pedestal Drill Press • **TRADESMAN** 8" Drill Press • 10-Gauge Plate Former • (2) 10'x24" Roller Conveyors • Assorted drill bits and taps • 5" Pedestal Tool Grinder

DIVING EQUIPMENT AND BOAT

(2) **KIRBY MORGAN** Superlite 17K Dive Helmets • **NORTHERN DIVER** Battery Operated Heated Diving Suit • **SEA LIFE** Micro HD Underwater Digital Camera, with live feed and light • **AMCOM** II 2825A Underwater 2-Diver Communication System • 2006 **AQUA-AIR** AAI-Colt Portable Dive Air Compressor, 5.5HP gas, with 15 gallon horizontal receiver air tank • **UNUSED** 2017 400' 3-Part Diving Umbilical • 200' 5-Part Diving Umbilical • 150' 3-Part Diving Umbilical • (2) Aluminum Aqua Lung CTCDOT-3AL3000 Diver Oxygen Tanks • Aluminum CTCDOT-3AL3000UUC760 Diver Tank • (2) Large Flotation Devices



DIVE HELMETS

HAWK 22 Fiberglass Center Console Boat, s/n KME00844M82A-210S, 1986 Johnson 150HP outboard V-6 gas, with ship-to-shore radio and 22' galvanized T/A trailer, VIN# DVE4362. In fair condition.

AIR COMPRESSORS

2002 **IR** XP375WIR, 375 CFM Portable, s/n 330525UFM061, I-R 4IRB7TB dsl • **IR** P100, 100CFM Portable, s/n 109257-U79-901, gas • **IR** TS-5 Single Stage Vertical Shop Air Compressor • **KOBALT** Single Stage Vertical Shop, single phase electric • **QUINCY** 40HP Rotary Screw, with 40HP electric motor • **QUINCY** 50HP Rotary Screw • **QUINCY** 235 Rotary Screw, with 50HP electric motor • **GARDNER-DENVER** ADL1003, 2-Stage Horizontal Air / Gas, with 25HP electric motor • **GARDNER-DENVER** Single Stage Horizontal, with 10HP electric motor • **RIDGID** 3.5HP Portable, Honda gas • **AIR TEK** JW0200-C Air/Water Separator • **AIR TEK** Air / Water Filter • 2,000 Gallon Vertical Air Receiver Tank, 14'x5' diameter



'02 IR 375CFM

OVER (100) WELDERS AND WELDING ACCESSORIES



WELDERS

gas • 1991 **MILLER** Bobcat 225G Skid Mounted, Onan gas • 1995 **LINCOLN** Ranger 8 Portable, Onan gas • (2) **LINCOLN** SA-200 Portable, gas

Stud Welders and Plasma Cutters: **MIDWEST** CD100 Electric Stud • 2006 **MILLER** Spectrum 2050 Plasma Cutter, with cart • 2012 **HYPERTHERM** Powermax 1250 G3 Series Plasma Cutter, with cart • 2015 **HYPERTHERM** Powermax 30XP Plasma Cutter • 2008 **HYPERTHERM** Powermax 600 Plasma Cutter • 2007 **THERMAL DYNAMICS** Professional Cut Master 151 Plasma Cutter • **THERMAL DYNAMICS** Thermal Arc Pak 5 Plasma Cutter • **THERMAL DYNAMICS** Plas-Weld I, Plasma Cutter • **THERMAL DYNAMICS** Stak Pak Plasma Cutter • **THERMAL DYNAMICS** Cut Master 32 Plasma Cutter • **THERMAL DYNAMICS** PS-30A Plasma Welder

Electric: (2) **LINCOLN** V200-T Invertec, Tig • 1996 **LINCOLN** Square Wave Tig 255 Portable Tig, with Pro Cool II cooler • **ESAB** 5002C, with Esab 3004 wire feeder and cart

Electric continued: (4) **ESAB** 453CV, (3) with wire feeders • **ESAB** 353CV • **ESAB** SVI4501, with **ESAB** wire feeder • (2) **ESAB** Digipulse 450i • (2) **LINCOLN** Power Wave 455, (1) with wire feeder • **LINCOLN** Power Mig 256 Portable • (3) **LINCOLN** Power Mig 255C Portable • (5) **LINCOLN** V-350 Pro, (3) with wire feeders • **LINCOLN** S350, with 84 wire feeder and cart • (2) 1997 **MILLER** 304P, with Miller 75 Series wire feeder • **LINCOLN** Portable Electric Torpedo • **HOBART** TR-500 Electric • **LINDE** VI-252 Portable, with wire feeder • **L-TEC** VI-450A • **L-TEC** 450 Pulse • **LINCOLN** CV-300 Portable • (7) **LINCOLN** TM300/300 • (5) **LINCOLN** TM400/400 • 1991 **LINCOLN** Idealarc TM500/500 • (2) **LINCOLN** DC600 • **LINCOLN** Idealarc R3S • **MILLER** Spectrum 750 Portable • **MILLER** MP65E • **MILLER** CP302 • **MILLER** Deltaweld 650 • **MILLER** 400SS • **BLUE HAWK** Flux-Mig 100

Wire Feed Welders: 2000 **LINCOLN** Weld-Pak 100 Power Wave • (2) **LINCOLN** LN-25 • (8) **MILLER** 8VS Suitcase • (4) **MILLER** S-32 Suitcase • (2) 2005 & 2006 **MILLER** Red-A-Arc XR Control Aluminum • (3) **DIGIMIG** Type DMIG Mig • (3) **ESAB** Mig 4HD • **LINCOLN** LF72 • **MILLER** 75 • **LINCOLN** LN-9 • **LINCOLN** LN-7

Welding Accessories: **ENSITECH** TIG Brush TBE-250 Weld Cleaner • **VICTOR** Track Torch • **LINDE** CM79 Track Torch • **VICTOR** MHT-100 Track Torch • **PANDJIRIS** 15-4POSIT Welding Manipulator, with electric controls • **ALLIS PEDE** Type AEI2B Welding Positioner, with 30" diameter wheel • **PANDJIRIS** 80-12 MVRMT Welding Positioner • (1 pallet) **UNUSED LINCOLN** Weld 761 Submerged Arc Flux, (35) 50 lb. bags • Welding Coolers • Welding Screens and Helmets • Large Quantity Welding Rod and Wire • Rod Oven • Assorted C-Clamps • Large Quantity Torch Sets, with carts • Large Quantity Torches, Hose, and Gauges