



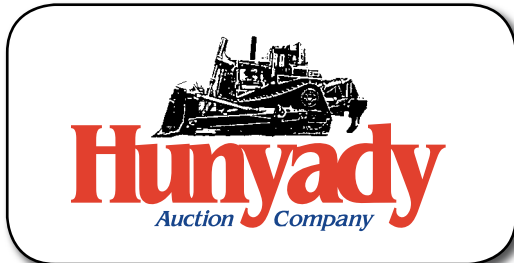
(4) OF (5) MINI EXCAVATORS



(3) OF (6) SKID STEERS



'94 CAT D4C XL III



1440 COWPATH RD. • HATFIELD, PA 19440  
215/361-9099 • Fax: 215/361-9212  
www.hunyady.com

PRE-SORTED  
FIRST CLASS MAIL  
US POSTAGE  
**PAID**  
HAVERTOWN, PA  
PERMIT #45



# **ABSOLUTE AUCTION**

## **COMPLETE LIQUIDATION OF SALES AND RENTAL INVENTORY**

**Lewandowski Equipment Co., Inc.**



'06 PIONEER KEETRACK 6X16

**Mt. Pleasant, Pennsylvania  
(Uniontown/Pittsburgh Area)**

**THURSDAY, NOVEMBER 14, 2013 - 9:00 AM**



## Lewandowski Equipment Co., Inc.



**Notice:** Following (30+) years of sales and rental of construction related tools and equipment, Mr. Lewandowski has decided it is time to completely liquidate this aspect of his company. Lewandowski Equipment Co. will continue to offer repair services, custom fabrication and parts sales. All equipment in this auction is owned by Lewandowski and will sell at Absolute Auction without minimums, reserves or buyers premiums!

**Location:** The auction will be held at the Lewandowski Equipment Co. office/yard location at 1 Wedding Lane, Mt. Pleasant, PA 15666

**Sale Site Directions: FROM PA TURNPIKE:** Exit #75 (New Stanton) After paying toll stay left toward US 119 South, at end of ramp stay left to exit onto US 119 South. Proceed (8.5) miles on US 119 South to 1st traffic light (McClure) Turn right and take an immediate right onto Wedding Lane to sale site on left.

**Online Bidding:** Live internet bidding will be provided by Proxibid. Proxibid will require a 2.5% internet provider service fee (capped at \$750) that will be charged for each item purchased online. All interested internet bidders are required to register with Proxibid 24 hours prior to the auction at [www.proxibid.com/hunyady](http://www.proxibid.com/hunyady) or call 877-505-7770

**Terms:** Payment in full is required on sale day by cash, certified funds, or check with a bank letter of guarantee. Sample letter of guarantee: "We hereby guarantee the payment of our customer \_\_\_\_\_ written on his account up to \_\_\_\_\_ dollars for purchases at your auction sale on November 14, 2013." All guaranteed checks should be made payable to Hunyady Auction Co.

**Sales Tax:** Since this contractor is selling items that are considered inventory and sold in the course of his business, the Commonwealth of Pennsylvania requires the auction company to collect sales tax at the rate of 6%, unless presented with a valid exemption at time of transaction.

**Financing: Financing is available, please contact Susan (215) 361-9099 at the auction company for details.**

**Inspection:** Items will be available for inspection beginning one week prior to the auction from 8:00AM to 4:00PM, or sale day morning from 7:00AM until 9:00AM. The site will be closed Saturday and Sunday, November 9th and 10th.

**Removal:** After complete payment, all sale items may be removed on sale day as long as the removal activity is not disruptive to the sale and only until 5:00PM. Items may also be removed Friday, November 15th and Monday thru Thursday, November 18th thru November 21st, from 8:00AM to 4:00PM. All items must be removed no later than Thursday, November 21, 2013 at 4:00PM.

**Airport Information:** The area is serviced commercially via Pittsburgh International Airport and privately via Joseph A. Hardy Connellsville Airport (KVVV), Connellsville, PA. Rental cars are available.

**Motel Information:** Holiday Inn Express, 250 Bessemer Road, Mt. Pleasant, PA 15666 • Comfort Inn New Stanton, 106 Bair Blvd., New Stanton, PA 15672 • Fairfield Inn New Stanton, 107 Bair Blvd., New Stanton, PA 15672

## Sale Site Phone: (724) 887-9375 • Sale Site Fax: (888) 859-8958

### DIGGER DERRICK, CONCRETE MIXER, FINISHER, AND TAG TRAILER

**1984 GMC Model 7000 Single Axle Digger Derrick,** Cat 3208 diesel and 5 speed trans with 2 speed rear, Telelect C130 rear center mounted digger derrick, s/n C130-1273, 15,600# capacity, 3-section hydraulic boom with pole grabber and Braden winch, 18" auger, rear hydraulics, (4) hydraulic outriggers, and 11R22.5 tires. In good condition with good tires.



**TELELECT C130 DIGGER DERRICK**

**DAFFIN Mobile Concrete Mixer,** Onan 2 cylinder diesel. In fair to good condition.



**DAFFIN MOBILE CONCRETE MIXER**

**WHITEMAN Model HTH44TK Ride-On Power Trowel,** s/n GH2000198, Kubota diesel and hydro-static trans. In very good condition. (118 Hours)



**WHITEMAN POWER TROWEL**

**2007 VIKING 10 Ton Tag-A-Long Trailer,** 19' deck, 5' beavertail, 5' ramps, air brakes, and 9.50x16.5 tires. In very good condition with very good tires.

**(2) 20' Overseas Containers**



**'07 VIKING 10 TON**

### RESIDENTIAL REAL ESTATE (OFFERED SUBJECT TO OWNER'S IMMEDIATE CONFIRMATION)



**3116 Richey Road, Connellsville, PA 15425, Fayette County, Bullskin Township, Connellsville School District:** (.04689) Acre Lot with: Duplex House, each side contains: (2) bedrooms, (1) full bath with shower, living room, kitchen, washer/dryer hookup, electric baseboard heat, city water, septic system.  
• Paved parking lot for (4) cars.

## CRAWLER SCREENING PLANT



'06 PIONEER SCREENING PLANT

**2006 PIONEER KEESTRACK 6x16 Crawler Screening Plant**, s/n 2022618, Cummins diesel, 6'x16' double deck screen, 9' tapered hopper with hydraulic folding sides, 60" x 20' front discharge conveyor, hydraulic folding side discharge conveyor, 14'6" crawlers, and 18" TBG pads. In good to very good condition with good to very good undercarriage.

## DIRECTIONAL DRILL



'05 DITCH WITCH JT1220 MACH 1

**2005 DITCH WITCH Model JT1220 Mach 1 Horizontal Directional Drill**, s/n 220247, Cummins B3.3 diesel, 12,000 lb. pullback, 10,000 lb. thrust, 1,400 ft. lb torque, 320' drill stem, auto stake down, fluid system, joystick controls, and 12" rubber tracks. In good to very good condition with good undercarriage. **(532 Hours)**

## HYDRAULIC EXCAVATORS AND ATTACHMENTS



'90 CAT E70B

**1990 CATERPILLAR Model E70B Hydraulic Excavator**, s/n 7YF02807, Mitsubishi diesel, 7' dipper stick, 32" digging bucket, manual thumb, enclosed cab, 8'6" crawlers, and 21" TBG pads. In good condition with good undercarriage.



'99 TAKEUCHI TB016

**1999 TAKEUCHI Model TB016 Mini Excavator**, s/n 11600656, Yanmar diesel, 3'9" dipper stick with hydraulic beyond, 16" digging bucket, swing boom, 4'4" backfill blade, canopy, and 9" rubber tracks. In good condition with very good undercarriage. **(2,875 Hours)**

**CASE Model CX25 ZTS Mini Excavator**, s/n PV09-22100, Yanmar diesel, 3'9" dipper stick with hydraulic beyond, 18" digging bucket, 4'10" backfill blade, canopy, 12" rubber tracks. In good condition with good to very good undercarriage. **(1,678 Hours)**



CASE CX25 ZTS

**2005 KOMATSU Model PC27MR-2 Galeo Mini Excavator**, s/n KMT-PC102P05015638, Yanmar 3082AE-5M diesel, 3'8" dipper stick, 20" digging bucket, swing boom, 5' backfill blade, canopy, and rubber tracks. In good condition with good undercarriage.

'05 KOMATSU PC27MR-2 GALEO



'99 THOMAS TS-45S

**1999 THOMAS Model TS-45S Mini Excavator**, s/n NS4520059, Isuzu diesel, 6'6" dipper stick with hydraulic beyond, 24" digging bucket, 6' backfill blade, enclosed cab and rubber tracks. In good to very good condition with good to very good undercarriage. **(2,344 Hours)**

**BODINE APWS-210 Stump Sheer Attachment • Hydraulic Auger Attachment (E70B) • Hammer (Thomas TS-45S)**

**PLUS HUNDREDS OF ITEMS TOO NUMEROUS TO LIST!**

**PLEASE REFER TO HUNYADY WEBSITE FOR DETAILED INVENTORY LIST!**

**Items Include:** Contractors Gas Powered Equipment and Power Tools • Landscape Equipment • Masonry Equipment and Tools • Skid Steer, Excavator, and Dozer Attachments • Shop Tools • AND MUCH MORE!

## RUBBER TIRED LOADERS AND ATTACHMENTS



'91 KAWASAKI 70Z III

**FORD Model FZ111V Rubber Tired Loader**, s/n C456840, JD diesel and powershift trans, GP loader bucket, EROPS with AC, and 15.5-25 tires. In good condition with fair tires.

**FLECO 8' Root Rake**. In good condition. (Fits Cat 955)

CAT 910 AND FORD FZ111V

**1991 KAWASAKI Model 70Z III Rubber Tired Loader**, s/n 70C15095, Cummins diesel and powershift trans, GP loader bucket, EROPS, and 20.5-25 tires. In good condition with good tires.

**CATERPILLAR Model 910 Rubber Tired Loader**, s/n 80U5522, Cat 3204 PC diesel and powershift trans, GP loader bucket, EROPS, and 15.5-25 tires. In fair to good condition with fair to good tires.



## TRACTOR LOADER BACKHOES



'98 CASE 580 SUPER L SERIES II 4X4

**1998 CASE Model 580 Super L Series II, 4x4 Tractor Loader Extend-A-Hoe**, s/n JYG0266176, Case diesel and shuttle trans, GP loader bucket, 24" digging bucket, ride control, EROPS with heat, 12x16.5NHS front and 19.5L028 rear tires. In good to very good condition with good tires.

**2006 JOHN DEERE Model 110, 4x4 Tractor Loader Backhoe**, s/n 5111143, Yanmar diesel and hydrostatic trans, removable backhoe attachment, 72" GP loader bucket, 24" digging bucket, 3-point hitch, front and rear auxiliary hydraulics, manual quick coupler, light package, 10x16.5 front and 17.5x24 rear tires. In fair to good condition with good tires.



'06 JOHN DEERE 110 4X4

## CRAWLER TRACTOR



**1994 CATERPILLAR Model D4C XL Series III Crawler Tractor**, s/n 6YL00231, Cat 3046 diesel and powershift trans, 6-way straight blade, OROPS, and 18" SBG pads. In good condition with fair to poor undercarriage.

**'94 CAT D4C XL SERIES III**

## SKID STEER LOADERS AND ATTACHMENTS



**2004 CATERPILLAR Model 246 Skid Steer**, s/n 5SZ08211, Cat diesel and hydrostatic trans, GP loader bucket, auxiliary hydraulics, EROPS with heat, and 12-16.5NHS tires. In very good condition with very good tires. **(178 Hours)**



**'04 CAT 246**

**2004 ASV Model RC50 Crawler Skid Steer**, s/n RSC01791, Perkins diesel and hydrostatic trans, 63" GP loader bucket and teeth, auxiliary hydraulics, and 16" rubber tracks. In good condition with good undercarriage. **(941 Hours)**

**'04 ASV RC50**



**2005 ASV Model RC30 Crawler Skid Steer**, s/n RSA02373, Cat 3013 diesel and hydrostatic trans, GP loader bucket with teeth and auxiliary hydraulics. In good condition with good undercarriage. **(362 Hours)**



**'05 ASV RC30**

**2002 BOBCAT Model 763 Skid Steer**, s/n 512262088, Kubota diesel and hydrostatic trans, GP loader bucket, auxiliary hydraulics, and 10x16.5 cushion tires. In good condition with very good tires. **(1,848 Hours)**

**'02 BOBCAT 763**



**2006 CASE Model 420 Skid Steer**, s/n N6M439647, Kubota diesel and hydrostatic trans, GP loader bucket, auxiliary hydraulics, and 10-16.5NHS tires. In very good condition with very good tires. **(139 Hours)**



**'06 CASE 420**

**2004 JCB Model 170 Skid Steer**, s/n 683230, Perkins diesel and hydrostatic trans, GP loader bucket and 10-16.5 tires. In good condition with fair to good tires. **(1,043 Hours)**

**'04 JCB 170**



**2006 DITCH WITCH Model SK500 Walk Behind Skid Steer**, s/n 60000148, Honda GX670, 24HP gas and hydrostatic trans, auxiliary hydraulics and 7" rubber tracks. In good condition with good undercarriage.

**'06 DITCH WITCH SK500**

## MOTOR GRADERS



**HUBER Model F-1500 Motor Grader**, s/n FG-253677, Detroit 4-71 diesel and powershift trans, 12' moldboard, front scarifier (no teeth), 11' snowplow with power angle, EROPS with heat, and 14.00-24 tires. In good condition with fair to good tires.



**HUBER F-1500**

**GALION Model 503L Motor Grader**, s/n 1C-06789, 6 cylinder diesel and shuttle trans, 10' moldboard, EROPS with heat, and 8.25-20TG tires. In fair to good condition with fair to good tires.

**GALION Model 503L Motor Grader**, s/n XMG0606T, Detroit diesel and shuttle trans, 10' moldboard, front scarifier (no teeth), OROPS, and 8.25-20TG tires. In fair condition with fair to poor tires.

**(2) GALION 503L**

## END DUMPS AND FLEX TRACK DUMP



**'02 TEREX 6 TON ROTATING**

**1988 KOMATSU Model HA250, 25 Ton End Dump**, s/n 60754, Komatsu diesel and powershift trans, lined bed and 20.5-25 tires. In good condition with good tires.

**2002 TEREX Model 6000PSR, 6 Ton Rotating Dump**, s/n SLBDDN00E204HG, Perkins diesel and 4 speed trans, articulated and rotating bed, and 405/70-20 tires. In fair to good condition with good tires. **(195 Hours)**

**1996 MAROOKA Model MST600F Flex Track Dump**, s/n 03159, Mitsubishi diesel and hydrostatic trans, 7' dump bed with fold-down sides, OROPS, and 20"x10' rubber tracks. In good condition with good undercarriage.



**'88 KOMATSU 25 TON**



**'96 MAROOKA MST600F**

## MOBILE BROOMS AND TRENCHERS



**2007 LAY-MOR Model 8HC Mobile Broom**, s/n 32269, Kubota diesel and hydrostatic trans, 8' broom, spray system with (2) poly water tanks, roll bar with canopy, tow package with surge brakes, and 205/75R16 tires. In very good condition with very good tires. **(203 Hours)**

**LAY-MOR 8HC AND 6HC**

broom, spray system with (2) poly water tanks, roll bar with canopy, tow package with surge brakes, 205/75R14 front and P20.5/75R16 rear tires. In very good condition with very good tires. **(440 Hours)**

**2001 VERMEER Model V4150A, 4x4 Trencher**, VIN# 1VAP082R911001068, Deutz diesel and hydrostatic trans, model TR4150 7' trencher bar, 8-piece pocketbook front counterweight, 5'4" 4-way backfill blade, roll bar, and 29x12.5-15NHS tires. In very good condition with very good tires. **(1,095 Hours)**

**CASE Model DH7, 4x4 Trencher**, s/n 1164566, 4 cylinder diesel and hydrostatic trans, 8' trencher bar, 7' 6-way blade, 17-piece pocketbook front counterweight, roll bar, enclosed cab, and 16.5Lx16.5 tires. In fair condition with fair to good tires. **(NOT RUNNING)**



**'01 VERMEER V4150A**

**1991 DITCH WITCH Model 1030H Walk Behind Trencher**, s/n 1Y0159, Honda 13HP gas, 45" trencher bar and 16x6.50NHS tires. In good condition with fair tires.

**2005 VERMEER Model RT100 Walk Behind Trencher**, s/n 1VRX051E151001309, Kohler 15HP gas and hydrostatic trans, 36" trencher bar and 18x9.50-8 tires. In good condition with good tires.

## COMPACTORS AND ROLLERS



**1997 BOMAG Model BW-213D-2 Vibratory Compactor**, s/n 109400270314U, Deutz diesel and hydrostatic trans, 84" smooth drum, drum drive, OROPS, and 23.1-26R3 tires. In good condition with very good tires.



**'97 BOMAG BW-213D-2**  
**1996 HYPAC Model C812-A Padfoot Compactor**, s/n A219C1777T, Deutz diesel and hydrostatic trans, 47" padfoot drum, 55" backfill blade, OROPS, and 7.50-16 tires. In good condition with good tires. **(2,184 Hours)**

**'96 HYPAC C812-A**



**INGERSOLL RAND Model SD40D Vibratory Compactor**, s/n Unknown, JD diesel and hydrostatic trans, 54" smooth drum, drum drive, OROPS, and 12.4-24 tires. In good condition with very good tires. **(2,610 Hours)**  
**2004 STONE Model TR34R Trench Compactor**, s/n 102004244, Hatz diesel and hydrostatic trans, radio remote control and 32" split drums. In good condition. **(556 Hours)**

**IR SD40D**

**2003 INGERSOLL RAND Model DX-70E Walk Behind Roller**, s/n 0D7072, Kubota

EA300-ENB1 diesel and hydrostatic trans, 26" smooth drum. In good condition.

**1994 BOMAG Model BW100-AD-2 Vibratory Tandem Roller**, s/n 101150500887, Deutz diesel and hydrostatic trans, 39" smooth drums, spray system with front and rear spray. In good condition.

**1986 GALION Model S4-6B Tandem Roller**, s/n D61231, 4 cylinder diesel and hydrostatic trans, 42" smooth drum rear, 40" split front drum, hydraulic tow bar and transport wheels, and 9.00-20 tires. In good condition with good tires.

**STOW Model R2000 Tandem Roller**, s/n Unknown, Honda 8HP gas and hydrostatic trans, 32" smooth drum rear and 28" split front drum. In good condition.

## STRAW BLOWERS AND PORTABLE CONVEYOR



**FINN B70-TD AND B-50**

**FINN Model B70-TD Portable Straw Blower**, s/n RMA1763, Kubota diesel and Rockford PTO, 4' discharge chute, 18"x18" bale capacity, 78" feed chute, and 205/65R15 tires. In good condition with good tires.

**FINN Model B-50 Portable Straw Blower**, s/n BN-1291, Kubota diesel and Rockford PTO, 4' discharge chute and P185/80R13 tires. In very good condition with very good tires.

**2003 REINCO Model M906913 Portable Straw Blower**, s/n 7980, VIN# 1R98819283P195004, John Deere 115HP diesel and Rockford PTO, rider console, 8' discharge chute, mounted on 16' tandem axle trailer with ST225/75R15 tires. In very good condition with very good tires. **(1,777 Hours)**

**REINCO Model M60 Portable Straw**

**Blower**, s/n 5705115, Deutz diesel and Rockford PTO, 16"x22" bale capacity, rider console, 8' chute, mounted on 14' tandem axle trailer with H78-15LT tires. In good condition with good tires.

**REINCO Model MD60F6 Portable Straw Blower**, s/n 2023, Deutz diesel and Rockford PTO, 8' discharge chute, mounted on tandem axle trailer with 7-14.5 tires. In fair condition with fair tires.

**TAILGATE Model Trailer Mounted Straw Blower**, s/n 78500418, Kohler V-twin gas and belt drive, ST17.5/80R13 tires. In good condition with good tires.

**REINCO Model TM7-30XA Portable Straw Blower**, s/n 1097, Wisconsin gas and direct drive, 4' discharge chute, mounted on 6' trailer with 7.00-15LT tires. In fair to poor condition.

**2004 CLAIRCO Model Con-28, 10"x28' Portable Conveyor**, s/n C03-0006, 1.5HP gear drive electric motor, with 17.5x80D13 tires. In good to very good condition with very good tires.

## UTILITY TRACTOR AND AIR CURTAIN



**'00 KUBOTA M9540D**

**2000 KUBOTA Model M9540D Utility Tractor**, s/n 58405, Kubota diesel and shuttle trans, Kubota model LA1353S loader attachment, s/n A5184 with manual quick disconnect, Kubota model M1841 loader attachment, s/n A0680, 3-point hitch, PTO, draw bar, rear auxiliary hydraulics, ROPS post, 12.4x24 front and 18.4x30 rear tires. In good condition with good tires. **(559 Hours)**

**AIR CURTAIN Model 2DF Burner**, s/n 1797-AM, Kubota diesel, 20' air curtain and 7-14-5-MH tires. In good condition with good tires.

## CHIPPERS



**'97 MORBARK 2400**

**MORBARK Model 20 Portable Total**

**Chiparvestor**, s/n 20-150, Cummins

350HP V-8 diesel, 28" feed opening, 28" vertical feed drums, 12" horizontal feed drums, 20' hydraulic chain drive boom, 24"

hydraulic grapple, hydraulic rotating discharge chute, elevated operator station, (2) hydraulic stabilizers, and 9.50x16.5 tires. In good condition with good tires.



**MORBARK 20 CHIPARVESTOR**



**'98 VERMEER BC2000**

**Chipper**, s/n 007684, Cummins 4B3.9-C diesel and Rockford PTO, auto feed, 6' discharge chute, and 33x12x50R16 tires. In good condition with good tires.

**BANDIT Model 65AW Portable Chipper**, s/n 00510, Lombardini diesel, 3' discharge chute and 5.30x12 tires. In good condition with good tires.

**2002 WOODCHUCK Model WC-17 Portable Chipper**, s/n AR70498U191335H, VIN# 1W9N71582G200114, Perkins diesel, 12" diameter top lift cylinder, 17" auto feed drums, and LT245/75R16 tires. In good condition with very good tires.



**'02 WOODCHUCK WC-17**

## ROUGH TERRAIN CRANES



**YALE RT40**

**YALE Model RT40, 22.5 Ton Rough Terrain Crane**, s/n 16351106, Detroit diesel and powershift trans, 26'6" to 75'6" 3-section hydraulic boom, single hoist, 3-sheave hook block, (4) hydraulic outriggers, and 16.00x25 tires. In fair condition with good tires.

**GROVE Model 35D, 6 Ton Rough Terrain Crane**, s/n 2775, 4 cylinder diesel and shuttle trans, 2-section hydraulic boom, heat, (4) hydraulic outriggers, 10.00x20

front and 8.25x15 rear tires. In good condition with good tires.

## FORKLIFTS



**1998 TRAVERSE Model TL6035, 6,000# Rough Terrain Forklift**, s/n 60637-CCC, Cummins B3-9C diesel and powershift trans, 2-section telescopic boom, 30' reach, 45' fork height, 4-wheel drive, 4-wheel steer, OROPS, and 13.00-24 tires. In good condition with fair tires.

**'98 TRAVERSE 6,000#**

**LIFT KING Model 12000, 20 Ton Forklift**, s/n 87415, Perkins diesel and shuttle trans, 78" forks with hydraulic fork position, side shift, 2-stage mast, hydraulic house leveling, 4-wheel drive, 4-wheel steer, EROPS, and 16.00-25 tires. In good condition with good tires.



**LIFT KING 20 TON**

**2002 MITSUBISHI Model FG020K, 4,000# Solid Tired Forklift**, s/n AF82D00842, Mitsubishi 4 cylinder propane gas and shuttle trans, 80" 2-stage mast, 21x7x15 front and 16x5x10.5 rear tires. In good condition with good tires.

**2000 MITSUBISHI Model FGC20K, 4,000# Solid Tired Forklift**, s/n AF82C-03510, Mitsubishi 4 cylinder propane gas and shuttle trans, 80" mast, 21x7x15 front and 16x5x10.5 rear tires. In good condition with good tires.



**'02 AND '00 MITSUBISHI 4,000#**

## AERIAL LIFTS AND SCISSORS LIFTS



**2007 SNORKEL Model TB80DZ, 4x4 Self Propelled Aerial Lift**, s/n SP07023, Deutz 58HP diesel, 3-section hydraulic boom, 80' platform height, 71.1' max platform reach, 600# capacity, 30"x92" basket, basket rotation, 5° slope sensor alarm, and 385/65D22.5 tires. In good to very good condition with good to very good tires. **(712 Hours)**

**'07 SNORKEL 80' AND '97 SNORKEL 60'**

**1997 SNORKEL Model TB-A60RDZ, 4x4 Self Propelled Aerial Lift**, s/n 972905, Deutz 58HP diesel, 3-section hydraulic boom, 60' platform height, 50' max platform reach, 30"x92" basket, basket rotation, 5° slope sensor alarm, and 15x19.5 tires. In good to very good condition with good to very good tires.

**1997 GENIE Model Z-60/34, 4x4 Aerial Lift**, s/n 921, Deutz diesel, 4-section articulated boom, 34' platform height, 500# capacity, 36"x96" basket, basket rotation and leveling, and 15x19.5 tires. In good condition with good tires.



**'97 GENIE 34'**



**'13 NIFTY LIFT 34'**

**2013 NIFTY LIFT Model TM34MG Portable Aerial Lift**, s/n 0125083, VIN# SLM34MG08DM025083, Honda GX160 gas, 2-section articulated boom, 34' platform height, 38"x26" basket, 500# capacity, manual extending axles, (4) manual stabilizers, and 16.5R13 tires. In excellent condition with excellent tires.

**2011 SKYJACK Model SV1113219 Scissor Lift**, s/n 22022376, 24 volt system, 19' platform height, 24"x64", 550# capacity platform with 38" extending section, onboard charger, and 200x2.5 non-marking tires. In very good condition with very good tires.

**2011 SKYJACK Model SJIII4632 Scissor Lift**, s/n 70008054, 24 volt electric system, 32' platform height, 30"x84", 7000# capacity platform with 48" extending section, onboard charger, and 16x5x12 non-marking tires. In very good condition with good tires.

**2008 SKYJACK Model SJ4620 Scissor Lift**, s/n 70004014, 24 volt system, 20' platform height, 40"x84", 1,300# capacity platform with 50" extending section, onboard charger, and 16x5x12 non marking tires. In very good condition with very good tires.

**1999 SKYJACK Model 8831F Scissor Lift**, s/n 36905, Isuzu diesel, 31' platform height, 11'4"x5'7", 2,500# capacity platform with 46" extending section, and 10x16.5 tires. In good condition with good tires.

**1998 GENIE Model G1930 Scissor Lift**, s/n 5671



**SKYJACK SCISSOR LIFTS**

## GENERATORS AND AIR COMPRESSORS



**GENERAC CT85**

**GENERAC Model CT85, 68KW Skid Mounted Generator**, Cat 3054 diesel, Generac model 3768S alternator, s/n 2022618, rated at 480/208 volt, 3-phase and 240 volt single phase, mounted on Cleveland 10' single axle trailer, VIN# C1195S10B10608340, with 8.75x16.5 tires. In good condition with good tires.



**2004 NISSHA 25KVA Portable Generator**, s/n XJ012500, Isuzu diesel, 25KVA, 480-240 3-phase, 240-120 single phase, and P205-70R14 tires. In very good condition with very good tires. **(125 Hours)**



**(2) GRIMMER SCHMIDT 185 CFM**

**GRIMMER SCHMIDT 185 CFM Portable Air Compressor**, s/n 185DR22842, JD diesel, 195/85R15 tires. In good condition with good tires.

**GRIMMER SCHMIDT 185 CFM Portable Air Compressor**, s/n 185DR23067, JD diesel, 205/75D15 tires. In good condition with good tires.

**GRIMMER SCHMIDT 125 CFM Portable Air Compressor**, s/n 74D3999, Case diesel. In fair to poor condition with fair to poor tires.

**1993 INGERSOLL RAND Model P-100-W-D Air Compressor**, s/n 218871UJC198, Deutz diesel, P185/80R13 tires. In good condition.

## MESSAGE BOARD, ARROWBOARD, AND LIGHT PLANTS

**2011 AMERICAN SIGNAL CO Model AMS10G333 Solar Message Board**, s/n 1A9BN333B2228121, (4) 10-character rows, electric raise, model TS33XNTCIP computer, and 205/75-D15 tires. In very good condition with very good tires.

**ARROWMASTER Portable Solar Arrowboard**, s/n 01013165, manual raise and 185/75R14 tires. In good condition with good tires.

**2012 DOOSAN Model LSC Portable Light Plant**, s/n 4FVLSACA3CU444510, Kubota diesel, manual tower, 4-lights, and ST175/80R13 tires. In very good condition with very good tires. **(71 Hours)**

**1999 TEREX/AMIDA Model AL4060D-4MH Portable Light Plant**, s/n 9906-57325, Kubota diesel, Partner 6KW generator, power tower, 4-lights, and P205/75R15 tires. In good condition with good tires.

**TEREX/COLEMAN Model MH4000RLKH Portable Light Plant**, s/n RL4150, Kubota diesel, equipped 6KW generator, manual tower, 4-lights, and B78-13 tires. In good condition with good tires.



**PORTABLE LIGHT PLANTS**