

1440 COWPATH RD. • HATFIELD, PA 19440  
 215/361-9099 • Fax: 215/361-9212  
 www.hunyady.com



'00 MACK RD688S AND '15 ROGERS 21 TON



'98 BIDWELL 3600-364



'00 INT'L 9900i EAGLE AND '15 FONTAINE 50 TON

PRE-SORTED  
 FIRST CLASS MAIL  
 US POSTAGE  
**PAID**  
 HAVERTOWN, PA  
 PERMIT #45



# ABSOLUTE AUCTION COMPLETE LIQUIDATION

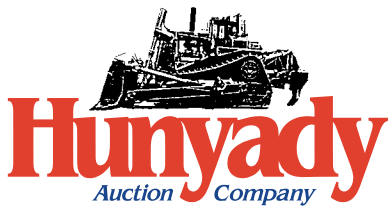
**WEDNESDAY,  
 APRIL 4, 2018  
 9:00AM**  
**Marricco  
 Construction  
 Co., Inc.**

'08 CAT 324DL AND  
 '03 CAT 315CL

**Canonsburg, Pennsylvania  
 (Pittsburgh Area)**



# ABSOLUTE AUCTION



**Marricco  
Construction  
Co., Inc.**

Online Bidding | Powered By  
**proxibid**

Please visit our website at  
**www.hunyady.com**  
Full Photo Library Available

**Notice:** Following over (40) successful years in the bridge building and masonry industries the owners of Marricco Construction have decided to cease operations in order to pursue other interest. All items in the auction are owned by Marricco Construction and will sell to the highest bidder regardless of price and WITHOUT minimums, reserves, or Buyer's Premium!

**Location:** The auction will be held at Marricco's yard facility, adjacent to Angelo's Landscape Supply, 273 Johnson Road, Canonsburg, Pennsylvania 15317

**Directions:** FROM INTERSTATE 79: Exit #41 (Racetrack Road) Proceed to Racetrack Road toward the Casino/Racetrack. Follow to 2nd traffic light and turn LEFT onto Johnson Road. Continue (1.0) mile to Auction Site on RIGHT. (NOTE – Johnson Rd will make a 90-degree turn to the Left, (0.7 miles) from Racetrack Rd – stay on Johnson Rd)

**Parking Note:** There is limited parking at the Auction Site. There will be various areas to park, within walking distance to the site, however these may be limited too. Please refrain from bringing trailers on the day of the auction.

**Online Bidding:** Live internet bidding will be provided by Proxibid. Proxibid will charge an Internet Service Provider Fee of 5% to the successful internet bidder for items over \$10,000 and 10% for items \$10,000 and under, for each lot purchased on-line. All interested internet bidders are required to register w/Proxibid 24 hours prior to the auction at [www.proxibid.com/hunyady](http://www.proxibid.com/hunyady) or call 877-505-7770

**Terms:** Payment in full is required on sale day by cash, certified funds, or check with a bank letter of guarantee. Sample letter of guarantee: "We hereby guarantee the payment of our customer \_\_\_\_\_ written on his account up to \_\_\_\_\_ dollars for purchases at your auction sale on April 4, 2018". All guaranteed checks should be made payable to Hunyady Auction Co.

**Sales Tax:** Since this contractor is selling items not normally sold in the course of his businesses, the Commonwealth of Pennsylvania considers this an isolated sale and does not require the auction company to collect sales tax.

**Financing:** Financing is available, please contact Susan (215) 361-9099 at the auction company for details.

**Inspection:** Items will be available for inspection beginning one week prior to the auction from 8:00AM to 4:00PM or sale day morning beginning at 7:00AM. This site will be closed Saturday, Sunday, March 31st and April 1st

**Removal:** After complete payment, all sale items may be removed on sale day as long as the removal activity is not disruptive to the sale and only until 5:00PM. Items may also be removed Thursday and Friday, April 5th and 6th and Monday and Tuesday, April 9th and 10th, from 8:00AM until 4:00PM. All items must be removed no later than Tuesday, April 10, 2018 by 4:00PM

**Sale Site Phone: (267) 446-3808 • Sale Site Fax: (888) 859-8958**

## CONCRETE TOOLS AND EQUIPMENT

**GARBRO** 2 CY Concrete Bucket • **GARBRO** 1.25 CY Concrete Bucket • 1998 **FASCUT** FS600 Electric Rebar Bender/Cutter, s/n 7338 (Rebar Cap #6-3/4") • **CORECUT** CC6500 Walk Behind Concrete Saw, s/n 1258496, Wisconsin 4 cylinder gas (0,558 Hours) • 36" & 24" Concrete Saw Blades • **TARGET** Roll-O-Matic Electric Masonry Saw, 18" blade capacity • **MORRISON** 54" Hydraulic Screed, Wisconsin 1 cylinder gas, power travel • **MAX** RB655 Cordless Rebar Tier • (4) **WACKER** Electric Concrete Vibrators • (4) **FORNEY** Press Air Meters • (2) Slump Cones • **FORNEY** Roll-O-Meter • (2) Concrete Hoppers and (6) 4' Chutes • (2) 48" Bull Floats • 10' Bull Float • (4) Straight Edges • Float Handles • Approximately (20) Concrete Blankets • Small Quantity Rebar Chairs • (12 Boxes) 6" Plastic Concrete Test Cylinders



GARBRO CONCRETE BUCKETS

## CONTRACTOR TOOLS AND EQUIPMENT



'05 MILLER WELDER

2005 **MILLER** Bobcat 225 Portable Welder, s/n LF265990, Kohler CH205 gas engine (0,319 Hours) (Purchased New)  
• (3) **GORMAN RUPP** 3" Electric Submersible Pumps (220 volt) • **GORMAN RUPP** 2" Electric Submersible Pump (110 volt) • **WACKER** 2" Electric Submersible Pump (110 volt) • 3" Trash Pump, Kubota gas • **HONDA** EM3800SX Portable Generator, 8HP gas • **BOMAG** T58 Gas Powered Foot Compactor • **GROUND POUNDER** GP3000 Plate Compactor, Kohler gas • (2) **CHERNE** 12" to 24" Pipe Plugs • (2) 60# Paving Breaker • **THOR** Size 38 Pneumatic Rock Drill • **SULLAIR** Chipping Hammer • (2) **COFFING** 3-Ton Chain Hoists • **HITACHI** NR90AE Pneumatic Framing Nailer • **BOSTICH** Pneumatic Finish Nailer • (2) **HILTI** DX36M Powder Actuated Tool • **DEWALT** 18 Volt Cordless Drill • **DAYTON** Electric Reciprocating Saw • **WERNER** 2732 Aluminum Pick Board • **WERNER** 40' Aluminum Extension Ladder • (3) **MILLER** Horizontal Life Line Systems (180' each) • (2) Retractable Safety Lines • Small Quantity Safety Harnesses • (4) Adjustable Scaffold Legs • (3) Sprayers (1 Unused)

## TRENCH SHORING AND ROAD PLATE



**EFFICIENCY** Gravel Box • (3 Sections)  
**SPEED SHORE** 7' Aluminum Trench Shore, with manual pump • (11) Adjustable Braces  
• Road Plate: (4) 5'x10'x3/4" • (8) 5'x10'x1" • (6) 5'x11'9"x1"

## SHOP TOOLS AND EQUIPMENT

**KARCHER** 3,000 PSI Portable Pressure Washer • **KARCHER** HDS580 Portable Diesel Fired Steam Cleaner • Oxygen Acetylene Tanks • **FEIN** Magnetic Drill Press • **REDDY HEATER** 170,000BTU Kerosene Portable Space Heater • **LINCOLN** Cordless Luber • (2) Hydraulic Bottle Jacks • (3) Screw Jacks and (1) Ratchet Jack • **RIDGID** 1/2" Electric Impact Wrench • (200') Welding Cable • (1 Pallet) 8/4 Electric Cable • Shop Lights, with stand • Shop Vac • All Thread

## SURVEY EQUIPMENT

**BEAM ALIGNER** 5700 Pipe Laser • **TOPCON** 301D Total Station • **TOPCON** ES Series Total Station • **CARLSON** Surveyor Plus Data Collector • **SPECTRA** **PRECISION** GL622 Dual Slope Laser • **TOPCON** RLH3A Rotating Laser  
• **TOPCON** AT-B3 Auto Level • **SCHONSTEDT** Magnetic Locator • **BW** Gas Alert Confined Space Gas Detector

## MISCELLANEOUS

1,000 Gallon Skid Mounted Fuel Tank, with 110 volt electric pump • 100 Gallon Fuel Tank, with 12 volt electric pump • 210 Gallon Round Poly Tank • (2) **RUBBERMAID** 100 Gallon Plastic Tubs • (7 Rolls) Plastic Tensar Geogrid Matting • Small Quantity Galvanized Plastic and Concrete Pipe • Small Quantity Lumber

## HYDRAULIC EXCAVATORS



'08 CAT 324DL

**2008 CATERPILLAR Model 324DL Hydraulic Excavator**, s/n JJG00830, powered by Cat C-7 Acert diesel engine, equipped with 9'6" dipper stick with Cat hydraulic coupler and hydraulic beyond, Cat 48" digging bucket, enclosed cab with heat and air conditioning, and 32" TBG pads. In good condition with good undercarriage. (Meter Reads 3,334 Hours) (Purchased from Cleveland Bros. Thru Rental Conversion)



'03 CAT 315CL (HAMMER SOLD SEPARATELY)



**ALLIED Rammer E66N Hydraulic Demolition Hammer** (Cat 315) • 72" Cleanup Bucket, with bolt-on cutting edge (324DL) • **CF 60"** Cleanup Bucket, with bolt-on cutting edge (315C) • **GEITH 30"** Digging Bucket (324D) • **CAT 24"** Digging Bucket (315C) • Bolt-On Asphalt Cutter • **ALLIED 8700C Hydraulic Plate Compactor**, s/n 7521 (Case 580) • **INDECO 621 Hydraulic Demo Hammer** (Case 580) • 12" Digging Bucket (Case 580)

ALLIED RAMMER E66N

## CRAWLER LOADER

**1998 CATERPILLAR Model 939C Crawler Loader**, s/n 6DS00511, powered by Cat 3046 diesel engine and hydrostatic transmission, equipped with general purpose loader bucket with teeth, 4-piece rear counterweight with tow bar, ROPS canopy, and 16" DBG pads. In good condition with good undercarriage.

'98 CAT 939C



## COMPACTOR AND WALK BEHIND ROLLER



'99 IR SD-70D

**1999 INGERSOLL RAND Model SD-70D Pro Pac Vibratory Compactor**, s/n 158431, powered by Cummins 4B3.9 diesel engine and hydrostatic transmission, equipped with 66" smooth drum, drum drive, ROPS canopy, and 14.9x24 tires. In good condition with good to very good tires.



'12 BOMAG BW65H

**2012 BOMAG Model BW65H Walk Behind Tandem Vibratory Roller**, s/n 861100751658, powered by Hatz diesel engine and hydrostatic transmission, equipped with 26" smooth drums, water system, and electric start. In very good condition.

## BRIDGE DECK FINISHER

**1998 BIDWELL Model 3600-364 Bridge Deck Finisher**, s/n 364-222-98, powered by Kohler 20HP gas engine, equipped with 30' basic machine, (3) 6' inserts for paving widths up to 48', 48" double roll finisher with augers and fog mist spray system, powered by Kohler 20HP gas engine, (42) 10'6" pieces of screed rail (441 LF), yokes and accessories. In good condition. (One Unused Spare Engine) (Purchased New)



'98 BIDWELL 3600-364

**UNUSED ROTA-VIBE Vibrator Attachment** (Sold Separately)

(2) 25' Extendable Work Bridges • 12' Work Bridge Insert (Sold Separately)



UNUSED ROTA-VIBE ATTACHMENT

## PORTABLE GROUND HEATER, PUMP, GENERATOR, AND AIR COMPRESSOR



**2000 THAWZALL Model 5A Portable Ground Heater**, s/n 090025, equipped with 280,000BTU diesel fired boiler, 5-zone heating loops with 500' hose per loop, 160 gallon diesel tank, 50 gallon poly glycol tank, 3,000' electric winding hose reel, and 225/75R16 tires. In good condition with good tires.



'00 THAWZALL 5A GROUND HEATER

**2000 GORMAN RUPP Model PA6D60-4045D-SU Prime Aire 6" Pump**, s/n 1198317, powered by John Deere diesel engine, equipped with 6"x6" dry prime pump, sound suppression enclosure, skid mounted. In good condition.

(4 Sections) Discharge and (3 Sections) 6" Suction Hose



'00 GORMAN RUPP PRIME AIR 6" PUMP



WACKER 25KW GENERATOR

**WACKER Model G25T, 25KW Portable Generator**, s/n 751701017, powered by Perkins diesel engine, equipped with 3-phase continuous rating of 20/25 KW/KVA, 240Y/480Y volt, 60/30 amp and single phase continuous rating of 14/14 KW/KVA, 120/240 volt, 60 amps, and 205/75R14 tires. In good condition with good tires.

**1999 LEROI Model Q185DJ-E Portable Air Compressor**, s/n 3449X527, powered by John Deere diesel engine, equipped with 205/75D15 tires. In good condition with good tires.



'99 LEROI 185CFM

## AERIAL LIFT



**1998 SNORKELIFT Model TBA60RDZ, 4x4 Telescopic Boom Lift**, s/n 982487, powered by Deutz diesel engine, equipped with 60' platform height, 50' platform reach, 30"x92" man/material basket, basket rotation and leveling, and 15x19.5 tires. In good condition with good tires.

'98 SNORKELIFT 60' 4X4

## TAG-A-LONG TRAILERS, FLATBEDS, AND STORAGE CONTAINERS

**2015 ROGERS Model TAG21-28/102/2XSP, 21 Ton Tandem Axle Tag-A-Long Trailer**, equipped with 22' level deck, 6' beavertail, 6' ramps, 102" width, chain dogs, air brakes, spring suspension, 50,910 lb GVWR, and 235/75R17.5 tires. In very good condition with very good tires. (Purchased New)



'15 ROGERS 21 TON

## TRUCK TRACTOR AND LOWBOY TRAILER

**2000 INTERNATIONAL Model 9900i Eagle Tandem Axle Truck Tractor**, powered by Cummins ISX600, 600HP diesel engine and Fuller 18 speed transmission, equipped with 46,000 lb rears, 12,860 lb front axle, wetline, air slide 5th wheel, air ride suspension, 3-stage engine brake, 58,860 lb GVWR, 199" wheelbase, aluminum wheels, heated mirrors, cruise control, air conditioning, and 11R24.5 tires. In good condition with good tires.



'00 INT'L 9900i EAGLE

**2015 FONTAINE Magnitude 50, 50 Ton Tri-Axle Lowboy Trailer**, equipped with non ground bearing, hydraulic detachable, 24' level deck, 20" transition, 14' open over axles, 102" width, air ride suspension, airlift rear axle, chain dogs, outriggers, 118,981 lb GVWR, and 255/70R22.5 tires. In very good condition with very good tires. (Purchased New)



'15 FONTAINE 50 TON

**2003 FOSTER Tandem Axle Tag-A-Long Trailer**, equipped with 18' wooden deck, 5'6" ramps, 79" deck width, 100" overall width, spring suspension, 16,500 lb GVWR, and 235/85R16 tires. In good condition with good to very good tires.



'98 TRANSCRAFT EAGLE 45'

**1998 TRANSCRAFT Eagle W2 Super Beam 45' Spread Axle Aluminum Flatbed Trailer**, equipped with aluminum deck and headboard, 96" overall width 10'2" spread axle, steel frame, air ride suspension, and 11R24.5 tires. In good condition with good tires.

**DORSEY 42' Tandem Axle Flatbed Trailer**, equipped with fixed headboard, stake pockets, spring suspension, and 11R22.5 tires. In fair condition with good tires.



20' OVERSEAS CONTAINERS

**(4) 20' Overseas Storage Containers.** In very good condition • **STRICK 20' Tandem Axle Storage Trailer**, s/n B9320. In fair condition. (NO TITLE) • **26' Single Axle Storage Trailer**, 10R22.5 tires. In fair condition. (NO TITLE)

## DUMP TRUCKS, PICKUPS, AND VEHICLE



'00 MACK RD688S

good tires. (Odometer Reads 149,320 Miles) (Purchased New)

**2000 MACK Model RD688S Tandem Axle Dump Truck**, powered by Mack E7-427, 427HP diesel engine and Fuller 8LL, 10 speed transmission, equipped with 14'6" steel dump body with 2-way gate and electric tarp, 46,000 lb rear and 18,000 lb front axle, 2-stage engine brake, spring suspension, pintle hitch with air and electric, aluminum wheels, cruise control, air conditioning, 64,000 lb GVWR, 385/65R22.5 front and 11R24.5 rear tires. In good condition with



'15 FORD F-350XLT 4x4

good to very good tires. (Odometer Reads 034,714 Miles) (Purchased New) (Balance of Factory Warranty Remaining: 3/36 Bumper to Bumper; 5/100 Engine; 5/60 Transmission)

**2015 FORD Model F-350XLT Super Duty 4x4 Extended Cab Pickup Truck**, powered by Power Stroke 6.7L diesel engine and automatic transmission, equipped with 8' bed with spray-on liner, tow package, 100 gallon fuel tank with electric pump, cross toolbox, running boards, alloy wheels, cruise control, air conditioning, and 265/70R17 tires. In good to very good condition with

**2016 FORD Model F-550 Super Duty Dump Truck**, powered by Power Stroke 6.7L diesel engine and automatic transmission, equipped with 9' steel dump body, 22" behind cab storage box, dual rear wheels, pintle hitch with electric, cruise control, air conditioning, and 225/70R19.5 tires. In very good condition with good to very good tires. (Odometer Reads 26,970 Miles) (Purchased New) (Balance of Factory Warranty Remaining: 3/36 Bumper to Bumper; 5/100 Engine; 5/60 Transmission)



'16 FORD F-550 SUPER DUTY

**2007 SUBARU Forester AWD Wagon**, powered by 2.5L, 4 cylinder gas engine and automatic transmission, equipped with all wheel drive, power windows and locks, cruise control, air conditioning, and 215/60R16 tires. In good condition with good tires. (Odometer Reads 149,166 Miles)



'07 SUBARU FORESTER AWD

## CONCRETE FORMS, OVERHANG JACKS, BARRIERS AND LIFTERS

**EFCO Forms:** (6) 8x12x8" web • (2) 6x8x6" web • (2) 4x6x6" web • (4) 2x6x6" web • (4) 6x12x6" web • (2) 8x8x8" web • (2) 4x8x8" web • (4) 2x8x8" web • (2) 1x8x6" web • 1x6x6" web; Small Quantity **EFCO** Corners, Taper Ties, and Accessories • (66) 20"x6" Stone Face Form Liners • Curb Forms: (20) 18"x10", with brackets • (20) 8"x10", with brackets • (24) 42" High x 5' Parapet Forms • (13) 30" High x 4' Parapet Forms • 4'x2'x2' Stackable Block Form • Approximately (55) Overhang Brackets • (2) **KENCO** KL90006INT, 9,000# Capacity Barrier Lifter • (15) 42" Jersey Barriers • (13) 30" Jersey Barriers • (22) Stackable Blocks

