



'05 JOHN DEERE 35D

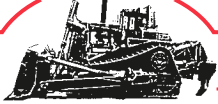


'07 CAT 277C



'07 CHEVY 3500

25TH



Hunyady
Auction Company

ANNIVERSARY

1990 - 2015

1440 COWPATH RD. • HATFIELD, PA 19440
215/361-9099 • Fax: 215/361-9212



PRE-SORTED
FIRST CLASS MAIL
US POSTAGE
PAID
HAVERTOWN, PA
PERMIT #45

ABSOLUTE AUCTION **COMPLETE LIQUIDATION** **Rhino Construction, Inc.**

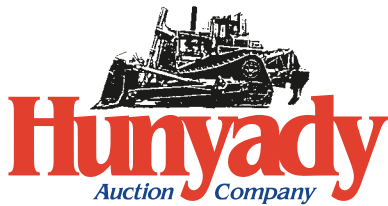


'04 KOBELCO SK160LC

Lower Burrell, PA
(New Kensington/Pittsburgh Area)

WEDNESDAY, FEBRUARY 3RD, 2016 - 9:00AM

ABSOLUTE AUCTION



**Rhino
Construction,
Inc.**

Please visit our website at
www.hunyady.com

Notice: After (25+) years in the construction business, Mr. Charles Johnson has decided to retire. All items are owned by Rhino Construction and will sell to the highest bidder without minimums, reserves and buyers premiums.

Location: The auction will be held at 720 Greensburg Road, Lower Burrell (New Kensington), Pennsylvania 15068

Sale Site Directions: FROM EXIT #48 OF THE PA TURNPIKE: Bear right on Freeport Road approximately (1.5) miles and follow signs to Route 28 North. Proceed on Route 28 North (4.3) miles to Exit #13 toward Russellton/Creighton. Merge onto Cranford Run Road then turn right onto Freeport Road. Follow Freeport Road (1.3) miles and turn left and cross C.L. Schmitt Bridge. Over bridge turn right on Industrial Boulevard, turns into 2nd Street in (1) mile, turns into Greensburg Road in (0.3) miles. Follow (0.8) miles to auction site on right.

Terms: Payment in full is required on sale day by cash, certified funds, or check with a bank letter of guarantee. Sample letter of guarantee: "We hereby guarantee the payment of our customer _____ written on his account up to _____ dollars for purchases at your auction sale on February 3, 2016" All guaranteed checks should be made payable to Hunyady Auction Co.

Sales Tax: Since this contractor is selling items not normally sold in the course of his business, the Commonwealth of Pennsylvania considers this an isolated sale and does not require the auction company to collect sales tax.

Financing: Financing is available, please contact Susan (215) 361-9099 at the auction company for details.

Inspection: Items will be available for inspection beginning one week prior to the auction from 8:00AM to 4:00PM, or sale day morning beginning at 7:00AM. The site will be closed Saturday and Sunday, January 30th and 31st

Removal: After complete payment, all sale items may be removed on sale day as long as the removal activity is not disruptive to the sale and only until 5:00PM. Items may also be removed Thursday and Friday, February 4th and 5th and Monday, February 8th 8:00AM until 4:00PM. All items must be removed no later than Monday, February 8, 2016 at 4:00PM

Airport Information: The area is serviced commercially and privately through Pittsburgh International Airport.

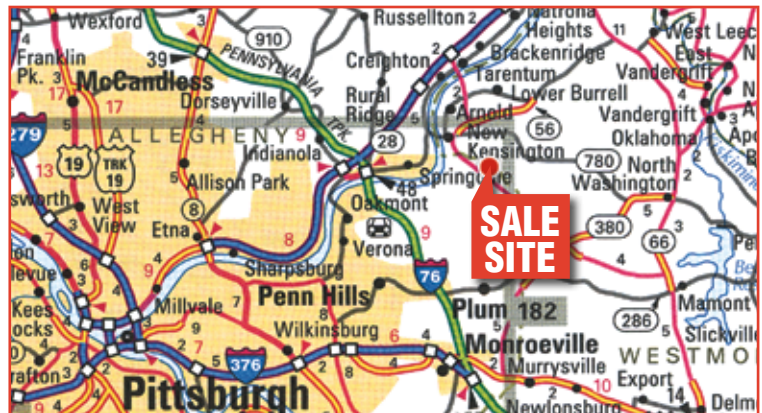
Motel Information: Spring Hill Suites (724) 274-1064 3015, Pittsburgh Mills Blvd, Tarentum, PA 15084 • Holiday Inn Express Pittsburgh-North (Harmarville) (412) 828-9300 10 Landings Dr, Harmar Township, PA 15238 • Hampton Inn & Suites Pittsburgh/Harmarville (412) 423-1100 2805 Freeport Rd, Pittsburgh, PA 15238

Sale Site Phone: (267) 446-3808 (Beginning February 1, 2016) • Sale Site Fax: (888) 859-8958

POWER TOOLS AND CONTRACTORS ACCESSORIES

Jersey Barrier Lifter • **WESTERN** 7'6" Hydraulic Snow Plow, with ultra-mount
• **GAR-BRO** 1/2 yd Concrete Bucket • **BLACK & DECKER** 2-Speed Core Drill, with stand and (2) 4" bits • (2) **FORNEY** Air Test Meters • **HUSKY** Wet Saw
• Dry Wall Cart • **BOSCH** Brute Electric Paving Breaker, with cart • **GARDNER DENVER** 80# Paving Breaker • (8) Assorted Size Chipping Hammers • Small Quantity of Breaker Steel • **BOSCH** 1122 Bulldog Hammer Drill • **MILWAUKEE** Hammer Drill • **DEWALT** D255 Hammer Drill • **BOSCH** Bulldog Extreme Hammer Drill • (2) **MILWAUKEE** Sawzalls • **HITACHI** C12RSH Compounds Miter Saw
• **DEWALT** Chop Saw • (4) Circular Saws • (4) Heavy Duty Angle Grinders
• Assorted Screw Shooters and Drills • **DEWALT** 18 Volt Cordless Screw Shooter
• (2) Pneumatic Scalers • **PASLODE** Cordless Nailer • **SENCO** Pneumatic Nailer
• (5) Pneumatic Nailers • **POWERS** C3ST Cordless Nailer • **RAMSET** Powder Actuated Tool • **EMGLO** Portable Electric Air Compressor • **PORTER CABLE** Dry Wall Sander and Vacuum • Electric Paint Sprayer • Walk Behind Paint Striper
• **HERCULES** Manhole Hoist • **TOPCON** DT308 Digital Theodolite • **SPECTRA PRECISION** Laser Plane Rotary Laser • **TOPCON** ATG6 Auto Level • **STANLEY** Pneumatic Hog Ring Tool • 10' Aluminum Brake • **GREENLEE** Gang Box • Gang Box • (2) Cross Toolboxes • (3) Contractor Kits Including Rakes, Shovels, Broom, Tampers, Pick and Pry Bars, Sledge Hammers, Axes, and Miscellaneous • (2)

Wheelbarrows and Barrel Cart • Appliance Dolly • 12" Digging Bucket (310 Backhoe) • Small Quantity of Signs and Sign Stands • Small Quantity of Barricades, with bases • OCE 7050 Blueprint Copier • HP Design Jet T1120 Printer



GAS POWERED CONTRACTORS TOOLS

ICS 18" Hydraulic Chain Saw • **ICS** Multipack Portable Hydraulic Power Unit (0,025 Hours) • **TARGET** Pac III Walk Behind Concrete Saw • **WACKER** Walk Behind Plate Compactor • **WACKER** BPS2550 Walk Behind Plate Compactor • **WACKER** BS60Y Foot Compactor • **WACKER** BS45Y Foot Compactor • **YAMAHA** 4,500 Watt Generator • **KUBOTA** 2,500 Watt Generator • **KUBOTA** 3,000 Watt Generator • **TAHOE** Portable Generator • **TAHOE** 3" Centrifugal Pump • 3" Centrifugal Pump • **WACKER** PT3, 3" Trash Pump • **KUBOTA** 2" Centrifugal Pump • (2) **STIHL** TS420 Demo Saws • **PARTNER** K960 Demo Saw • Small Quantity 2" and 3" Suction and Discharge Hose • Small Quantity 6" Suction and Discharge Hose • Roller Screenshot • Backpack Blower • **STIHL** FS44 Trimmer, with brush blade • **TORO** String Trimmer



HYDRAULIC EXCAVATORS AND ATTACHMENTS

2004 KOBELCO SK160LC Hydraulic Excavator, s/n YM03-U0749, powered by Mitsubishi 6 cylinder diesel engine and hydraulic drive, equipped with 10'6" dipper stick, Hensley 24" digging bucket with side cutters, Hendrix hydraulic coupler, auxiliary hydraulics, thumb bracket, enclosed ROPS cab with heat and air conditioning, and 23.5 TBG pads. In good condition with good undercarriage. (4,113 Hours)



'04 KOBELCO SK160LC CP 44" Digging Bucket (Kobelco 160)

1990 JOHN DEERE 290D Hydraulic Excavator, s/n 001278, powered by John Deere 4 cylinder diesel engine and hydraulic drive, equipped with 7'9" dipper stick, Hensley 24" digging bucket with side cutters, thumb bracket, and 27.5 TBG pads. In good condition with fair to good undercarriage.



'90 JOHN DEERE 290D

5-Tine Grapple (JD 290) • **HENSLEY 42" Digging Bucket** (JD 290) • **UNUSED WB 18" Digging Bucket** (JD 290)



'05 JOHN DEERE 35D

2005 JOHN DEERE 35D Mini Hydraulic Excavator, s/n 234384, powered by Yanmar 3 cylinder diesel engine and hydraulic drive, equipped with 50" dipper stick, 24" digging bucket, auxiliary hydraulics, swing boom, 69" backfill blade, ROPS canopy, and 12" rubber crawlers. In good condition with good undercarriage. (2,113 Hours)



DEMO HAMMER

Hydraulic Demolition Hammer (JD 35D) • 24" Digging Bucket (JD 35D) • 16" Digging Bucket (JD 35D)

SKID STEER LOADERS AND ATTACHMENTS



'07 CAT 277C

1999 NEW HOLLAND LX985 Skid Steer Loader, s/n 134498, powered by New Holland 4 cylinder diesel engine and hydrostatic transmission, equipped with super boom, general purpose loader bucket, high flow auxiliary hydraulics, and 12x16.5 tires. In good condition with fair tires. (Purchased New)

2007 CATERPILLAR 277C Crawler Skid Steer Loader, s/n JWF00554, powered by Cat diesel engine and hydrostatic transmission, equipped with 80" GP bucket, hydraulic quick disconnect, auxiliary hydraulics, enclosed ROPS cab with heat and air conditioning, AM/FM stereo, and light package. In good condition with fair to good undercarriage. (3,972 Hours)



'99 NEW HOLLAND LX985

McMILLEN Auger Attachment, with 24" and 12" augers • 67" Side Dump Bucket • Hydraulic Concrete Curb Bucket • 42" Forks • (1 Set) **GROUSER** 16" Skid Steer Tracks

DUMP TRUCKS



'99 MACK CH613

1999 MACK CH613 Tri-Axle Dump Truck, powered by Mack E7-427 diesel engine and Maxitorque T2180, 18 speed transmission, equipped with Pro Haul 18' steel dump body with 2-way gate, 44,000# rears and 14,000# front axle, camelback suspension, 58,300# GVWR, tow package with air, aluminum front wheels, heated mirrors, air conditioning, 12R22.5 front, 11R22.5 rear, and 255/70R22.5 lift tires. In good condition with good tires.

2000 INTERNATIONAL 8100 Single Axle Dump Truck, powered by Cummins 6 cylinder diesel engine and Fuller 10 speed transmission, equipped with Thiele 10' steel dump body with chute and 10" apron, 20,000# rear and 12,000# front axle, spring suspension, 32,000# GVWR, tow package with air, power heated mirrors, power windows, cruise control, air conditioning, and 275/80R22.5 tires. In good condition with good to very good tires.



'00 INT'L 8100



'07 CHEVY 3500

2007 CHEVROLET 3500 Single Axle Dump Truck, powered by Vortec V-8 gas engine and 5 speed transmission, equipped with 8' steel mason dump body with manual tarp, 11,400# GVWR, dual rear wheels, and air conditioning. In good condition with good tires.

1998 DODGE 3500 Single Axle Dump Truck, powered by Cummins 6 cylinder diesel engine and 5 speed transmission, equipped with 9' steel dump body, 11,000# GVWR, tow package, dual rear wheels, air conditioning, and 215/85R16 tires. In good condition with good tires. (Purchased New)



'98 DODGE 3500

ROLLER AND PAVER



'82 IR DA-30

1982 INGERSOLL RAND DA-30 Double Drum Vibratory Roller, s/n 6555S, powered by Deutz 2 cylinder diesel engine and hydrostatic transmission, equipped with 40" smooth drums, drum cleaners, water system, and ROPS canopy. In good condition. (Vibration Problem)

1989 PUCKETT BROTHERS T450 Power Box Paver, s/n PBP89D4029, powered by Wisconsin 2 cylinder gas engine and hydrostatic transmission, equipped with 9' heated vibratory screed. In fair condition.

TRAILERS

2001 INTERSTATE 40DLA, 20 Ton Tandem Axle Tag-A-Long Trailer, equipped with 19" level deck, 5' beavertail, 50" ramps, .96" width, spring suspension, air brakes, chain dogs, 47,600# GVWR, and 215/75R17.5 tires. In good condition with good tires. (Purchased New)



'01 INTERSTATE 20 TON

2007 CAM Superline Tandem Axle Tilt Deck Trailer, equipped with 4' front deck, 13' tilt deck with 2' beavertail, 81" deck width, 102" overall width, stake pockets, chain dogs, 6,800# GVWR, and 225/75R15 tires. In good condition with very good tires. (Purchased New)



'07 CAM SUPERLINE

2006 NEW ALEXANDRA Tandem Axle Tag-A-Long Trailer, equipped with 17" level deck, 82" deck width, 102" overall width, stake pockets, 10,000# GVWR, and 4.78x15 tires. In good condition with fair to good tires.



'06 UNITED CARGO TRAILER

2003 SOUTHWEST 6'x12' Single Axle Cargo Trailer, equipped with fold down rear and swing side doors, and 205/75R15 tires. In good condition with good tires. (Purchased New)



'03 SOUTHWEST CARGO TRAILER

WELLS CARGO 8'x20' Single Axle Job Site Trailer, equipped with swing rear and side doors. In fair to good condition with fair tires.

STRICK 40' Tandem Axle Aluminum Storage Van Trailer, with sliding tandem, swing rear doors, and 10.00x20 tires. In fair condition with fair tires. (No Title)

UTILITY AND PICKUP TRUCKS



'08 DODGE RAM 3500HD

2008 DODGE Ram 3500HD Single Axle Utility Truck, powered by Hemi 5.7L gas engine and 6 speed transmission, equipped with 9' walk-in utility body, dual rear wheels, cruise control, air conditioning. In good condition with good to very good tires. (Purchased New)

2005 GMC Canyon Pickup Truck, powered by Vortec 4 cylinder gas engine and automatic transmission, equipped with tonneau cover, and air conditioning. In good condition with good tires.



'05 GMC CANYON



2000 CHEVROLET 2500 Pickup Truck, powered by Vortec 5.7L gas engine and 5 speed transmission, equipped with 8' bed with liner, 100 gallon fuel tank with electric pump, tow package, and 265/75R16 tires. In fair to good condition with very good tires.

'00 CHEVY 2500

CURB FORMS, PIC BOARDS, LADDERS, AND SCAFFOLDING



(160LF) 18" Straight Curb Forms • (16) 18"x10' Back • (16) 10"x10' Front • (16) 8"x10' Front • (14) 18"x10' Radius Forms (140LF) • (34) 4"x10' Sidewalk Forms • (1) 4"x10' Radius Sidewalk Forms • 36" Curb Pins • 24" Curb Pins • 18" Pins

CURB FORMS

(2) **WERNER** 24"x20" Aluminum Pick Boards • **WERNER** 24' Ladder • (5) **WERNER** 28' Aluminum Ladders • (2) Ladder Jacks • Roof Hoist • Shingle Ladder, with motor • (2) 16' and (2) 8' Ladder Sections • (1) 6'x5' Scaffold Sections, with cross braces • (8 Sections) 4' Scaffold, with cross braces and (3) scaffold planks

(2) 24' Fiberglass Ladders • 10' Fiberglass Step Ladder • (2) 6' Fiberglass Step Ladders

Water Filled Temporary Barriers, 5'x3'



FIBERGLASS LADDERS

PUMP, GENERATOR, AND GOLF CART



'07 MULTIQUIP TRASH PUMP

2007 MULTIQUIP MQ600TD80TLRB, 6" Portable Trash Pump, s/n 270602, powered by Deutz 4 cylinder diesel engine, equipped with in-frame fuel tank and 205/75D14 tires. In very good condition with very good tires. (0,679 Hours)

CUMMINS 50FDC43DA Generator, s/n 4A99077-2, powered by Cummins NT400GS diesel engine, equipped with 200KW, 250KVA, 240/416 volt, 3-phase. In fair condition.

CLUB CAR Electric Golf Cart, equipped with Demco 15 gallon electric sprayer and battery charger. In good condition with good tires.



CLUB CAR ELECTRIC GOLF CART

SHOP TOOLS

LINCOLN Ranger 8 Portable Welder/Generator, Kohler 18HP gas engine (0,334 Hours)
• **LINCOLN** 225 Amp Electric Arc Welder • **CHICAGO PNEUMATIC** Mig Welder • **CLARK**



SPS28C Walk Behind Floor Sweeper, Wisconsin 1 cylinder gas • **MASTER** 350,000BTU Portable Space Heater • **SEARS** 50,000BTU Space Heater • **DAYTON** 110,000BTU Portable Space Heater • **DYNA-GLO** 125,000BTU Propane Space Heater • **CENTRAL HYDRAULICS** 1,500# Portable Lift • **SIMPSON** WS4040CVS Portable Pressure Washer, Briggs & Stratton 16HP, gas engine • **MTM** 1022 Portable Steam Cleaner • **TAHOE** 2700 PSI Portable Pressure Washer, Honda GX200 gas engine • **LINDSAY** 100 Portable Sandblast Pot • **CUMMINS** 10" Dual Wheel Pedestal Grinder • **TASK MASTER** 16 Speed Drill Press • Electric Parts Washer • **DEWALT** 1/2" Electric Impact Wrench • Floor Jack • Air Pig • Metal and Plastic Fuel Cans • Oxygen Acetylene Torch Set, with bottle cart • 2-Wheel Dolly • Shop Lights, with stands • Heavy Duty Shop Vac • 300 Gallon Fuel Storage Tank, with dyke and electric pump, 50 gallon fuel tank with electric pump • **DAYTON** Hydraulic Frame Straightner Kit