



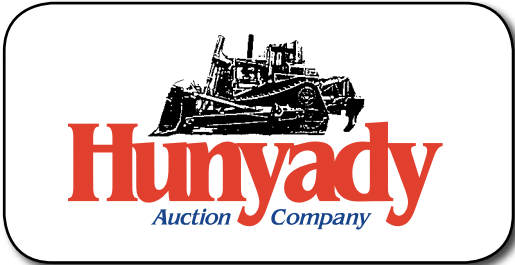
'94 VOLVO L120



'96 JCB 214



(4) OF (6) FORD 4X4 UTILITY TRUCKS



1440 COWPATH RD. • HATFIELD, PA 19440  
215/361-9099 • Fax: 215/361-9212  
www.hunyady.com

PRE-SORTED  
FIRST CLASS MAIL  
US POSTAGE  
**PAID**  
HAVERTOWN, PA  
PERMIT #45



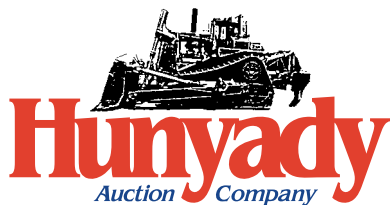
# **ABSOLUTE AUCTION**

## **SURPLUS LIQUIDATION**

**Rorvik General Contracting, LLC**

**Souderton, Pennsylvania**  
**WEDNESDAY, JULY 20, 2016 - 9:00AM**

# ABSOLUTE AUCTION



## Rorvik General Contracting, LLC

Please visit our website at [www.hunyady.com](http://www.hunyady.com)

Full Photo Library Available

**NOTICE:** The owner of Rorvik General Contracting, LLC has identified items, which are surplus to their current workload and decided to sell at absolute auction. Consignments have been accepted by area contractors and Signature Financial. All items will sell at absolute auction, without minimums, reserves, or buyers premiums.

**Location:** The auction will be held at Rorvik's shop and yard facility at 1085 Spur Road, Souderton, Pennsylvania 18964

**Sale Site Directions:** 1085 Spur Road is located just off Bethlehem Pike adjacent to Indian Valley Camping Center • **From Route 309 Traveling North:** Exit Route 309 at Car Sense and Montgomeryville Cycle Center then proceed to Bethlehem Pike. Continue on Bethlehem Pike (0.8) miles and turn Right onto Spur Road. Auction site will be immediately on the Left • **From Route 309 Traveling South:** Exit Route 309 at the Souderton/PA Rte. 113 exit. Turn Left onto Route 113 and follow to Bethlehem Pike. Turn Right onto Bethlehem Pike and follow (0.5) miles and turn Left onto Spur Road. Auction site will be immediately on Left.

**Terms:** Payment in full is required on sale day by cash, certified funds, or check with a bank letter of guarantee. Sample letter of guarantee: "We hereby guarantee the payment of our customer \_\_\_\_\_ written on his account up to \_\_\_\_\_ dollars for purchases at your auction sale on July 20, 2016" All guaranteed checks should be made payable to Hunyady Auction Co.

**Sales Tax:** Since these contractors are selling items not normally sold in the course of his business, the Commonwealth of Pennsylvania considers this an isolated sale and does not require the auction company to collect sales tax.

**Financing:** Financing is available, please contact Susan (215) 361-9099 at the auction company for details.

**Inspection:** Items will be available for inspection beginning one week prior to the auction from 8:00AM to 4:00PM, or sale day morning beginning at 7:00AM. The site will be closed Saturday and Sunday, July 16th and 17th

**Removal:** After complete payment, all sale items may be removed on sale day as long as the removal activity is not disruptive to the sale and only until 5:00PM. Items may also be removed Thursday and Friday, July 21st and 22nd and Monday thru Wednesday, July 25th to 27th, from 8:00AM to 4:00PM. All items must be removed no later than Wednesday, July 27, 2016 at 4:00PM

**Airport Information:** The area is serviced commercially and privately through the Lehigh Valley International Airport as well as Philadelphia International Airport. Private aviation is serviced via Penn Ridge Airport (KCKZ) in Perkasie, Pennsylvania

**Motel Information:** Holiday Inn Lansdale, 1750 Sumneytown Pike, Kulpville, PA 19443 (215) 368-3800 • Courtyard Philadelphia Lansdale, 1737 Sumneytown Pike, Lansdale, PA 19446 (215) 412-8686

**Sale Site Phone: (267) 446-3808 (Beginning July 11, 2016) • Sale Site Fax: (888) 859-8958**

### SHOP TOOLS

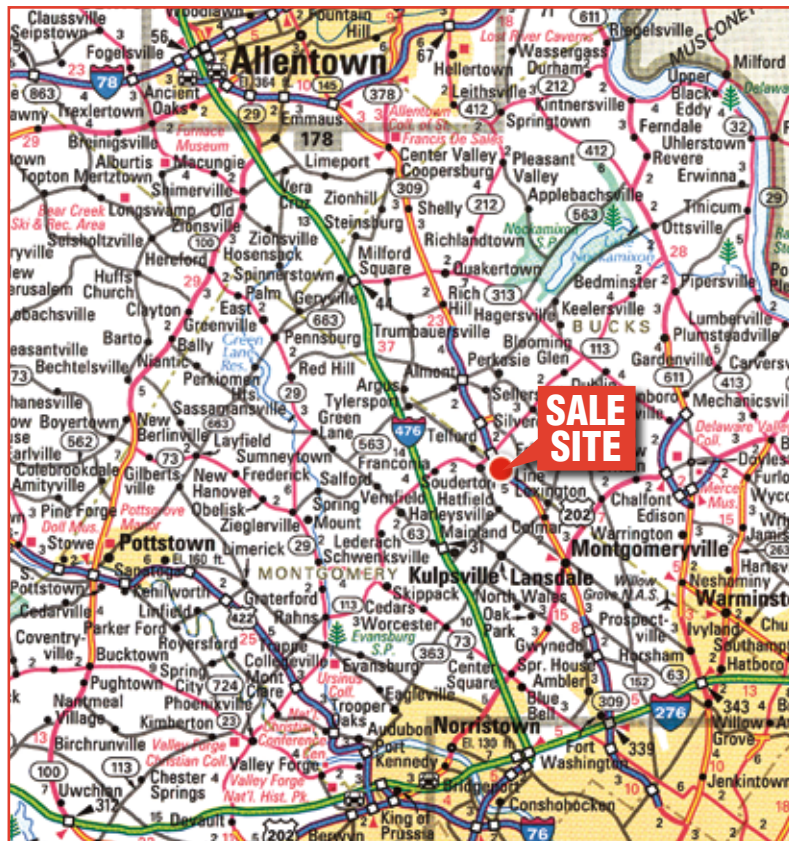
**MILLER** Millermatic 200 Amp Electric Welder • **MILLER** Millermatic 185 Amp Electric Welder • **MILLER** Two Fifty Twin 250 Amp Electric Welder • **MILLER** AEAD-200LE, 200 Amp Electric Welder/Generator • Oxygen Acetylene Torch Set, with cart • Track Torch • **CENTRAL PNEUMATIC** 5HP Electric Air Compressor • **WORTHINGTON** Electric Air Compressor • **EMERSON** 7" Metal Cutting Electric Band Saw • **GUARDIAN** Power 16 Speed Drill Press • **CRAFTSMAN** 10" Radial Saw • **MILWAUKEE** Portable Band Saw • **SAFETY KLEEN** Parts Washer • Engine Stand • **EXIDE** 12 Volt Battery Charger • **SNAP ON** MT539 Battery Tester • **PITTSBURGH** 22 Ton Pneumatic Floor Jack • 8-Ton Floor Jack • Floor Jack • **EASTWOOD** Pneumatic Abrasive Blaster • **CRAFTSMAN** Toolbox • **OLYMPYK** Demo Saw • **BACK BUDDY** 350A Brake Drum Dolly • **SKIL SAW** Circular Saw • **B&D** Jig Saw • **MILWAUKEE** Sawsall • **CHICAGO** Electric Angle Grinder • **RYOBI** Battery Powered Circular Saw • **KAWASAKI** Angle Grinder • (3) Bolt Bins • Torpedo Heater • **RIDGID** 16 Gallon Shop Vac • **SHOP VAC** 14 Gallon Shop Vac • **ALL-PRO** 60,000 BTU Torpedo Heater • **REDDY HEAT** 100,000 BTU Torpedo Heater • 1/2" Pneumatic Impact Wrench • Stainless Steel and Steel Stock

### TRUCK PARTS

350 Cubic Inch Gas Engine, with 55,000 miles (RTO) • **ROAD RANGER** 9 Speed Transmission • (2) **THERMO KING** 4 Cylinder Diesel Engines (For Reefer Unit) • 1,000 Gallon Fuel Tank, with 12 volt pump • **HUSKY** Cross Toolbox • Miscellaneous Tires • Shelf of Truck Parts • Filter, Air Bags, and Parts

### MISCELLANEOUS

**1990 MAXIM 2100XR, 21' Cuddy Cabin**, s/n USKA73MGK990, powered by Force 120HP outboard, with single axle trailer. Boat and trailer fair condition, engine good.



**1085 SPUR ROAD, SOUDERTON, PENNSYLVANIA 18964**



## DUMP TRUCKS



'99 KENWORTH T800

**1999 KENWORTH Model T800 Tri-Axle Dump Truck**, powered by Detroit Series 60 diesel engine and Eaton RTO14908LL, 10 speed transmission, equipped with R&S 16' steel dump body with electric tarp, 46,000# rears, 20,000# front and 12,350# lift axle, walking beam suspension, airlift steerable 3rd axle, 3-stage engine brake, PTO, air brakes, power and heated mirrors, cruise control, air conditioning, 385/65R22.5 front, 11R22.5 rear, and 315/80R22.5 3rd axle tires. In good condition with good tires.



'98 WESTERN STAR 4964F

**1998 WESTERN STAR Model 4964F Tri-Axle Dump Truck**, powered by Cat C12 diesel engine and Eaton Fuller 8LL, 10 speed transmission, equipped with 16' steel dump body with electric tarp, 46,000# rears and 20,000# front axle, airlift 3rd axle, 2-stage engine brake, heated mirrors, air conditioning, 385/65R22.5 front and 11R22.5 rear tires. In good condition with good tires.



'98 KENWORTH T300

**1998 KENWORTH Model T300 Single Axle Dump Truck**, powered by Cat 3126 diesel engine and Allison automatic transmission, equipped with Fontaine 10' steel dump body with manual tarp, 21,000# rear and 12,000# front axle, 33,000# GVWR, air ride suspension, air brakes, heated mirrors, air conditioning, and 11R22.5 tires. In good condition with good tires.

## RUBBER TIRED LOADER, CRAWLER LOADER, AND CRAWLER TRACTOR



'94 VOLVO L120

**1994 VOLVO L120 Rubber Tired Loader**, s/n L120V60977, powered by Volvo 6 cylinder diesel engine and powershift transmission, equipped with 5 cubic yard light material bucket, enclosed ROPS cab with air conditioning, and 23.5-25 tires. In good condition with fair to good tires.



'85 CAT 963

**1985 CATERPILLAR Model 963 Crawler Loader**, s/n 18Z01431, powered by Cat 3304 diesel engine and hydrostatic transmission, equipped with general purpose loader bucket with teeth, enclosed ROPS cab, and 18" DBG pads. In fair to good condition with fair undercarriage. (Rebuilt Final Drives)



CAT D3B

**1984 CATERPILLAR Model D3B Crawler Tractor**, s/n 27Y02614, powered by Cat 3204 diesel engine and powershift transmission, equipped with 6-way straight blade, ROPS canopy, and 16" SBG pads. In good condition with good undercarriage.



## BACKHOE



'96 JCB 214 SERIES II

**1996 JCB Model 214 Series II Tractor Loader Extend-A-Hoe**, s/n 0446873, powered by diesel engine and powershift transmission, equipped with 4-in-1 bucket, Geith 24" digging bucket, rear auxiliary hydraulics, sliding position backhoe, (2) joystick controls, auto lube system, (2) hydraulic outriggers, enclosed ROPS cab, 11.0-16 front and 19.5L-24 rear tires. In good condition with good tires.

## PORTABLE ASPHALT KETTLES, FORKLIFT, AND AIR COMPRESSOR

**PANTHER 600 Gallon Tandem Axle Portable Asphalt Kettle**, s/n HTK400-3588, powered by Briggs & Stratton 8HP gas and Kohler gas engines, equipped with 8-14.5 tires. In good condition with good tires.



PANTHER 600 GALLON

**AERIOIOL 200 Gallon Portable Asphalt Kettle**. In poor condition with poor tires. (Parts Only)

**250 Gallon Asphalt Sealer**, with Honda GX160 gas engine

**YALE Model 3,000# Battery Powered Solid Tired Forklift**, s/n 306639, battery powered and shuttle transmission, equipped with 174" 3-stage mast, 42" forks, battery charger, and FOPS canopy. In fair condition.

**INGERSOLL RAND Model GRR160, 160CFM Portable Air Compressor**, s/n 87344-U75-250, powered by 4 cylinder gas engine, equipped with 235/75R15 tires. In fair to good condition with good tires.

## PICKUP TRUCKS AND TAG-A-LONG TRAILER

**2008 FORD Model F-350XL Super Duty, 4x4 Pickup Truck**, powered by 6.4L diesel engine and automatic transmission, equipped with 8' bed with liner, Meyer 8' snowplow, cross toolbox, tow package, air conditioning, and 265/70R17 tires. In good condition with good tires.

**1991 CHEVROLET Model Cheyenne 2500, 4x4 Pickup Truck**, automatic transmission, equipped with 8' bed and tow package. (Engine Disassembled-Parts Truck Only)

**2007 PEQUEA 9,990# Tandem Axle Tag-A-Long Trailer**, equipped with 16' level deck, 96" width, 4' beavertail, (2) 6' ramps, spring suspension, and 235/80R16 tires. In good condition with good tires.

## SNOW MAINTENANCE

Shopmade 12' Snow Pusher • **MEYERS 8' Plow Blade**, with plow wing brackets • **MEYERS 8' Plow Blade**, with 4" drop bracket for lifted truck • **MEYERS 7'6" Plow Blade** • (2) **MEYERS E47 Pumps** • **MEYERS E60 Pump** • (2) **TORO CCR2450 Single Stage Snow Throwers** • **TORO CCR200 Single Stage Snow Thrower** • (3) **TORO 621ZR, 21" Single Stage Snow Throwers** • **ARIENS SS52 Single Stage Snow Thrower** • (3) Single Snow Throwers

## CONTRACTORS TOOLS

**STIHL TS410 Demo Saw** • **MAKITA Demo Saw**, gas • (2) **MBW Plate Compactors**, Honda 5HP gas • (2) **STONE ST728C Foot Compactor** • **STIHL 065, 20" Chain Saw** • **CRAFTSMAN 18" Chain Saw** • **MCCULLOCH Promac 610, 16" Chain Saw** • **CRAFTSMAN 20"/46cc Chain Saw** • **EMGLO Portable Air Compressor**, Honda 5HP gas • **REALIST LT8-300 Transit** • **HUSQVARNA 170BF Backpack Blower** • **RED MAX Backpack Blower** • **ECHO SRM25 Weed Eater** • 5HP Rototiller • (4) 90# Pneumatic Breakers • Pneumatic Sandblaster • Pneumatic Floor Scraper • Pneumatic Broom/Waxer • (3) Pneumatic Impact Wrenches • **UNUSED UST GG7500N, 7500 Watt Generator** • **PASLODE 16 Gauge Battery Powered Nail Gun** • **IMPULSE 325 Battery Powered Nail Gun** • **DEWALT D2553 Electric Hammer Drill** • **AEG PH38 Electric Hammer Drill** • **MK Electric Wet Saw** • Ladder Jacks • (3) Fiberglass and Aluminum Extension Ladders • Scaffolding, Casters, and Pins • (1 Pallet) Gas Cans • (2) Step Ladders • (4) Pressure Washer, long reach • 325 Gallon Poly Tank

## UTILITY TRUCKS



'09 FORD F-350XL

**2009 FORD Model F-350XL Super Duty, 4x4 Utility Truck**, powered by 5.4L gas engine and automatic transmission, equipped with Knapheide 9' open utility body, 10,000# GVWR, running boards, tow package, cruise control, and air conditioning. In good condition with fair to good tires.

**2008 FORD Model F-250XL Super Duty, 4x4 Utility Truck**, powered by 5.4L gas engine and automatic transmission, equipped with Knapheide 9' open utility body, 9,000# GVWR, running boards, cruise control, air conditioning, and 245/75R17 tires. In good condition with good tires.



(4) OF (5) '08 FORD F-250 4X4

**2008 FORD Model F-250XL Super Duty, 4x4 Utility Truck**, powered by 5.4L gas engine and automatic transmission, equipped with Knapheide 9' utility body with material rack, 9,000# GVWR, running boards, tow package, cruise control, and air conditioning. In fair condition with fair to good tires.



(1) OF (5) '08 FORD F-250XL 4X4

**2008 FORD Model F-250XL Super Duty, 4x4 Utility Truck**, powered by 5.4L gas engine and automatic transmission, equipped with Knapheide 9' open utility body with material rack, 9,000# GVWR, running boards, tow package, cruise control, and air conditioning. In good condition with fair to good tires.

**2008 FORD Model F-250XL Super Duty, 4x4 Utility Truck**, powered by 5.4L gas engine and automatic transmission, equipped with Knapheide 9' Open utility body with material rack, 9,000# GVWR, running boards, tow package, cruise control, and air conditioning. In good condition with fair to good tires.

**2008 FORD Model F-250XL Super Duty, 4x4 Utility Truck**, powered by 5.4L gas engine and automatic transmission, equipped with Knapheide 9' Open utility body with material rack, 9,000# GVWR, running boards, tow package, cruise control, and air conditioning. In good condition with fair to good tires.