



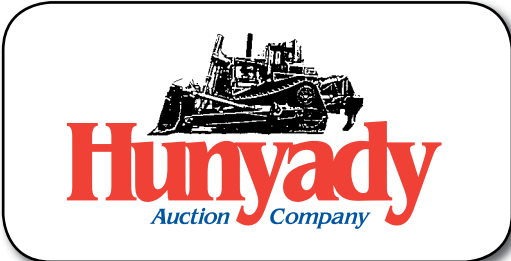
'96 SCMI SUPER SET 23



'96 NEWMAN KF-24 AND KF-100



'01 NEWMAN EPR-24



1440 COWPATH RD. • HATFIELD, PA 19440
215/361-9099 • Fax: 215/361-9212
www.hunyady.com

PRE-SORTED
FIRST CLASS MAIL
US POSTAGE
PAID
HAVERTOWN, PA
PERMIT #45



ABSOLUTE AUCTION

WEDNESDAY, MAY 1, 2013 9:00 AM

COMPLETE LIQUIDATION

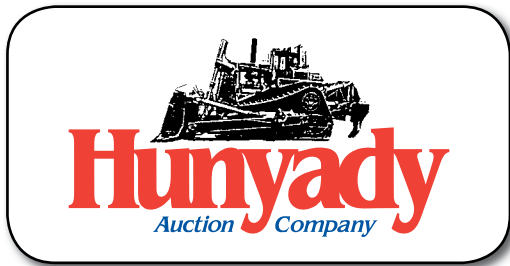
RR Hardwoods, Inc.



'96 HYSTER 19,000# &
'96 HYSTER 8,000#

Titusville, PA (Franklin/Oil City Area)

ABSOLUTE AUCTION



RR Hardwoods, Inc.



Notice: After (17) years in business, Mr. Rod Bedow has decided to liquidate his dimensional millwork business, RR Hardwoods, Inc. and concentrate on harvesting. Everything in the auction will sell to the highest bidder regardless of price, with the exception of the real estate, without minimums, reserves, or Buyer's Premiums!

Location: The auction will be held at RR Hardwoods sawmill location at 3063, State Route 8, Titusville, PA 16354

Sale Site Directions: The auction site is (14) miles north of Oil City, Pennsylvania and (7) miles south of Titusville, Pennsylvania on State Route 8.

Online Bidding: Live internet bidding will be provided by Proxibid. Proxibid will require a 2.5% internet provider service fee (capped at \$750) that will be charged for each item purchased online. All interested internet bidders are required to register with Proxibid 24 hours prior to the auction at www.proxibid.com/hunyady or call 877-505-7770

Terms: Payment in full is required on sale day by cash, certified funds, or check with a bank letter of guarantee. Sample letter of guarantee: "We hereby guarantee the payment of our customer _____ written on his account up to _____ dollars for purchases at your auction sale on May 1, 2013." All guaranteed checks should be made payable to Hunyady Auction Co.

Real Estate Terms: The real estate will be offered "Subject To Owner's Immediate Confirmation", with reserve. The terms will be 10% down payment the day of the auction and settlement within (90) days.

Sales Tax: Since this contractor is selling items not normally sold in the course of his business, the Commonwealth of Pennsylvania considers this an isolated sale and does not require the auction company to collect sales tax.

Financing: Financing is available, please contact Susan (215) 361-9099 at the auction company for details.

Inspection: Items will be available for inspection beginning one week prior to the auction from 8:00AM to 4:00PM. The site will be closed Saturday and Sunday, April 27th and 28th.

Removal: After complete payment, all sale items may be removed on sale day as long as the removal activity is not disruptive to the sale and only until 5:00PM. Items may also be removed Thursday and Friday, May 2nd and 3rd, and Monday thru Wednesday, May 6th thru May 8th, from 8:00AM to 4:00PM. All items must be removed no later than Wednesday, May 8, 2013 at 4:00PM.

Dismantlement and Loadout: RR Hardwoods will disconnect electric service, remove all items, from the buildings and loadout all items at no cost to the buyer. If transportation dimensions require additional dismantlement that will be the responsibility of the buyer.

Airport Information: The area is serviced both commercially and privately through Venango Regional Airport.

Motel Information: Cross Creek Resort, Inc. (800) 461-3173, 3815 State Route 8, Titusville, PA 16354 • Titusville Comfort Inn (814) 827-0041, 511 West Central Avenue, Titusville, PA 16354

Sale Site Phone: (814) 827-2344 • Sale Site Fax: (888) 859-8958

REAL ESTATE

(Offered Subject To Owner's Immediate Confirmation)

(9+/-) Acres, Zoned C-1 Commercial and Light Industrial, 404' of Frontage on State Route 8. Equipped with 80'x200' steel open span building with concrete floor, built in 2000, and several smaller buildings, including retail store with combined area of approximately 15,000SF. Site has a well, septic system, heavy power, and is generally level. (Appraisal and Deed Copy Available Upon Request)



APPROXIMATE PROPERTY LINES



ABSOLUTE AUCTION

DIMENSIONAL MILLWORK EQUIPMENT



'96 NEWMAN KF-24



'01 NEWMAN EPR-24

1996 NEWMAN MACHINE CO. Model KF-24 Gang Rip Saw, s/n 15090, powered by 75HP electric motor, equipped with 24-1/2" arbor, (10) 14" diameter blade capacity, pneumatic and hydraulic controls, joystick console, and

assorted rip saw blades, 1996 NEWMAN MACHINE CO. Model KF-100, Movable Fence Feeding System, s/n 15097, with live hydraulic 14'Lx30"W roller feed table with hydraulic feeds, (10) laser alignment lights, 26" out feed roller. In good condition.

2001 NEWMAN MACHINE CO. EPR-24 Double Roughing Planer, s/n 15391, pneumatic tire roll feed, digital thickness control, air controls, (2) 50HP electric head motors, (2) 15HP electric feed motors, and 24"x6" max feed, console and remote console. In good condition.

1996 SCMI Model Super Set 23, 5-Headed Moulder, s/n AB/098449, BEN200 auto feed, kicker fence, electric controls, chip shield, extra bed plate, and assorted tooling. In good condition.

Assorted Moulder Cutter Heads and Tooling



MOULDER CUTTER HEADS



'96 SCMI SUPER SET 23



'95 SCMI S520

1995 SCMI Model S520, 20" Planer, s/n AB093924. In good condition.



'86 SCMI T110

1986 SCMI Model T110 Shaper, s/n KF/002456, 25"x39" table.

1996 SCMI Model 1746, 12" Cutter Head Profile Grinder, s/n 69F74601185, 10" grinding wheel, 8" diamond tip carbide wheel, coolant system, E-Trac electric inverter. In good condition.



'96 SCMI 1746



'95 TYLER XL 36"

1995 TYLER MACHINERY Model XL 36" Resaw, s/n 3850-95, (2) 8" feed belts, power feed, 15HP electric motor. In fair condition.

SANBORN 48"x7" Bandmill, electric operated, 22"x5' live off belt. In fair condition. (Disassembled-No Motor) **(17) 7"x28' and (3) 4"x28' Band Saw Blades**. In good condition.

MATTISON Model 404 Straight Line Rip Saw, s/n 908-D3, 5'x6" table, laser light, and (3) extra saw blades. In good condition.



MATTISON 404

1996 INDUSTRIAL WOOD WORKING MACHINE CO. Model N5100L Chop Saw,

s/n N510L5-165496, air retractable blade, and (2) 15"x10' roller conveyor tables. **INDUSTRIAL WOOD WORKING MACHINE CO. Model C500R Chop Saw**, s/n C500R-4-250376, air retractable blade, and (2) 16"x7' roller conveyor tables. In fair condition.

(1) OF (2) CHOP SAWS

SAWMILL EQUIPMENT

1989 RECKART Model R436, 36" Double Bladed Edger, s/n 006, equipped with belt feeder, 36"x7" in-feed table, 40HP electric motor with belt feed to operate saws, electric starter box, 5HP electric motor, hydraulic pump, 15 gallon hydraulic tank, and 36"x7" out-feed table. In good condition.



'89 RECKART R436



O-FRICK OTT-1-C

O-FRICK Model OTT-1-C Right Hand Manual Mill, 38"x15" with 4-head blocks, 3-air dogs, 3-air power receivers, air driven set works, panagraphic arm with 42"x44" steel track with cable feed. In good condition.

RECKART Husk Hydraulic Feed System, 125HP electric motor, 8'x44", jack shaft, hydraulic pump, and 150 gallon hydraulic tank. In good condition. (No Saw Blade) (125HP Electric Motor Sold Separately) (10-14)

(5) SIMMONS 56" Head Saw Blades. In good condition.

RECKART 10'x5' Log Deck Unloader, with 3-fingers, hydraulic operated with 30 gallon hydraulic tank, pump, foot control assembly. In good condition.



RECKART UNLOADER AND MELLOTT LOG TURNER

MELLOTT 48" Log Turner, hydraulic chain rotator. In good condition.

ARMSTRONG #4 Stretcher Roll, s/n 17860. In good condition.

AIR COMPRESSORS, FUEL TANKS, AND MISCELLANEOUS

2000 INGERSOLL RAND Model T-30 2-Stage Vertical Shop Air Compressor, s/n 940104, 7.5HP electric motor, 80 gallon tank, and oil cooler. In good condition.

1987 EMGLO 2-Stage Horizontal Shop Air Compressor, s/n 021484035, 10HP electric motor, 120 gallon tank, and Siemens disconnect. In good condition.

2001 ZEKS Model 20MPS1000 Heatless Purge Air Dryer, s/n 169141. In good condition.

250 Gallon Skid Mounted Fuel Tank, Fill-Rite manual pump • 275 Gallon Steel Fuel Tank • **NORWESCO** 500 Gallon Poly Tank • Shop Built Setup Stand, for knife setups • **PRE-SET** 25 Scale • (6) Banding Carts • (2) Electric Banding Shears • **JET** 6,000# Pallet Jack • **DEWALT** 12", 2HP Table Saw, 2'x3' table (Missing Guard) • Shop Built Cut-Off Saw, with 20" blade (No Motor) • 14" Pedestal Mounted Grinding Wheel • (2) Shop Fans



'00 IR T-30 AND '01 ZEKS AIR DRYER

MOLDING



LARGE QUANTITY Molding (Contact Auction Company or Visit www.Hunyady.com For Complete Inventory)

SCISSOR LIFT TABLES, GLUE WHEEL, CONVEYORS, AND LUMBER CARTS



AMERICAN Model W2BA, 8,000# Portable Electric Scissor Lift Table, s/n 43968, with 4'x4' platform, 4' maximum height. In good condition.

AMERICAN T1-60-040 4,000#

AMERICAN LIFTS Model T1-60-040, 4,000# Electric Scissor Lift Table, s/n 90529-1, 5'x10' platform. In good condition.



AMERICAN W2BA 8,000#



JAMES TAYLOR 8' 6-Position Glue Wheel, s/n H846, 6-position, clamping accessories. In good condition.

6-POSITION GLUE WHEEL

1996 RECKART 10'x25' Live Green Chain Table, s/n 427, 3HP electric motor and gear box reducer. In good condition.



MELLOTT 20"X20'

CONVEYOR TABLES: 21"x9' Roller • 19"x17' Roller • 16"x10' Roller, with glue box • 5'x8' Tapered Roller Conveyor Table • 5'x8' Slab Rack

LUMBER CARTS: (2) RECKART 42"x9'-12' Extendable • (3) RECKART 42"x9' • (6) RECKART 42"x7' • (6) 36"x6' • (25) 24"x4'

LUMBER CARTS



RECKART 10'X39'



'96 RECKART 10'X25'

MELLOTT 24"x20' Feed Conveyor, nylon belt, 3HP electric motor and belt drive. In good condition.

RECKART 36"x22' Outgoing Roller Conveyor Table, s/n 533. In good condition.



FORKLIFTS



'96 HYSTER H190XL2 19,000#

1996 HYSTER Model H80XL2, 8,000# Solid Tired Forklift, s/n G005D08523T, powered by LP gas engine and powershift transmission, equipped with 172" 3-stage mast, 60" forks, side shift, FOPS canopy, work lights, 2.50x15 front and 7.00-12.5 rear tires. In good condition with poor tires.

HYSTER Model H40H, 5,200# Pneumatic Tired Forklift, s/n D3D1661S, powered by LP gas engine and powershift transmission, equipped with 130" 2-stage mast, 48" forks, FOPS canopy, 7.00-15 front and 6.50-10 rear tires. In fair to good condition with good tires.

CLARK Model EC500 50F, 4,450# Electric Solid Tired Forklift, s/n EC355-2703905EA578, battery powered, equipped with 188" 3-stage mast, 36" forks, KW Model 24-515F3B Type LA24 Cell Electric Forklift Battery Charger, FOPS canopy, and 16x5x10.5 tires. In good condition with good tires.

(2) Forklift Dump Hoppers



'96 HYSTER H80XL2 8,000#



HYSTER H40H 5,200#

TRUCK TRACTOR AND CURTAIN TRAILERS

1998 MACK Model CH613 Tandem Axle Truck Tractor, powered by Mack E7-427, 427HP diesel engine and Fuller 10 speed transmission, equipped with 38,000# rears, 12,000# front axle, air ride suspension, Jake brake, sliding 5th wheel, 187" wheelbase, air conditioning, aluminum Budd wheels, and 11R22.5 tires. In fair condition with good tires.



'98 MACK CH613



'98 NUVAN 53' AND '95 UTILITY 48'

1998 NUVAN Model VF-53102, 53' Tandem Axle Curtain Trailer, equipped with 102" width, sliding tandems, 66,000# GVWR, and 295/75R22.5 tires. In fair to good condition with good tires.

1995 UTILITY TRAILER Model TS2CHE, 48' Tandem Axle Curtain Trailer, equipped with 96" width, sliding tandems, 65,000# GVWR, steel Budd wheels, and 295/75R22.5 tires. In fair to good condition with good tires.
5th Wheel Dolly, with sliding 5th wheel and 10.00-20 tires. In fair condition.

BOILER AND CHIP HANDLING



'09 CLASSIC CENTRAL BOILER

2009 CLASSIC CENTRAL Boiler, s/n 83091, with digital controls and gravity feed. In good condition.

CORNELL Sawdust Collection System Consisting of: CYCLONE Silo • CORNELL Model 42, 12"x18" Electric Blower Assembly, 50HP electric motor • RECKART 8"x10" Discharge Blower, 7.5HP electric motor • KOGER Model 12-2-032, 12" Airloc Valve, s/n 4983, 3HP electric motor • 6"x6" Square Box Steel Support Structure, approximately 200'-250' of 12", 10", and 6" diameter metal duct work. (Components Sold Separately)

2005 INDUSTRIAL AIR TECHNOLOGY CORP. Model 2611R015CCW3609, Electric Chip Blower, s/n 48525-A, 40HP electric motor, mounted on elevated steel frame. In good condition.

RECKART 8"x10" Sawdust Blower, 15HP electric motor. In good condition.

RECKART Sawdust Blower Assembly, belt driven with 7.5HP electric motor. In fair condition. (Motor Poor) • 30'x12' Tapered Down to 16" Cyclone (Needs Patched) • 8'x8'x5'8" Steel Chip Bucket, with rear chains. In poor condition.



SAWDUST COLLECTION SYSTEM