



'06 MACK CV713 GRANITE



(1) OF (2) '02 CAT 953C



'03 CAT D5G LGP



1440 COWPATH RD. • HATFIELD, PA 19440
215/361-9099 • Fax: 215/361-9212
www.hunyady.com

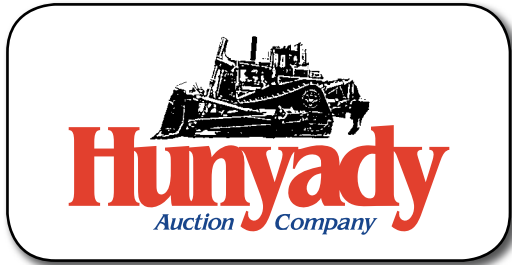
PRE-SORTED
FIRST CLASS MAIL
US POSTAGE
PAID
HAVERTOWN, PA
PERMIT #45



ABSOLUTE AUCTION
COMPLETE LIQUIDATION
S. Thomas Contracting, Inc.
WEDNESDAY,
AUGUST 13, 2014
9:00 AM

Fallston, Maryland
(25 Miles Northeast of Baltimore)

ABSOLUTE AUCTION



S. Thomas Contracting, Inc.

Bid Live Online | proxibid.
www.proxibid.com/hunyady



Notice: Following (37) successful years in the sewer/water utilities and site development, the owners of S. Thomas Contracting have decided to liquidate all equipment assets in order to re-align their business and pursue smaller projects. S. Thomas Contracting, Inc. will continue to offer their fine services on a much smaller scale. All equipment is owned by S. Thomas Contracting, Inc. and will sell at absolute auction to the highest bidder without minimums, reserves or buyers premiums.

Location: The auction will be held at the S. Thomas Contracting facility located at 1906 West Grove Ave, Fallston, MD 21047

Sale Site Directions: FROM INTERSTATE 95: Exit #74 (Joppa/Fallston) and proceed to Maryland Route 152 North. Continue (4.2) miles and turn right onto US Route 1 North (Bel Air Road) Proceed (0.4) miles and turn left at blinking light onto Milton Avenue. Follow to 1st right onto West Grove Avenue. Auction site will be on left.

Online Bidding: Live internet bidding will be provided by Proxibid. Proxibid will require a 2.5% internet provider service fee (capped at \$750) that will be charged for each item purchased online. All interested internet bidders are required to register with Proxibid 24 hours prior to the auction at www.proxibid.com/hunyady or call 877-505-7770

Terms: Payment in full is required on sale day by cash, certified funds, or check with a bank letter of guarantee. Sample letter of guarantee: "We hereby guarantee the payment of our customer _____ written on his account up to _____ dollars for purchases at your auction sale on August 13, 2014" All guaranteed checks should be made payable to Hunyady Auction Co.

Sales Tax: Sales tax will be collected at a rate of 6% on all items, with the exception of motor vehicles. Sales tax on motor vehicles will be due when the vehicle is registered. The state of Maryland will only accept resale and exemption certificates issued by the state of Maryland. Out-of-state purchasers can either apply for a Maryland resale/exemption number prior to the sale or apply for a sales tax refund from the state of Maryland with proof of intended resale.

Financing: Financing is available, please contact Susan (215) 361-9099 at the auction company for details.

Inspection: Items will be available for inspection beginning one week prior to the auction from 8:00AM to 4:00PM, or sale day morning beginning at 7:00AM. The site will be closed Saturday and Sunday, August 9th and 10th

Removal: After complete payment, all sale items may be removed on sale day as long as the removal activity is not disruptive to the sale and only until 5:00PM. Items may also be removed Thursday and Friday, August 14th and 15th and Monday thru Wednesday, August 18th thru August 20th, from 8:00AM until 4:00PM. All items must be removed no later than Wednesday, August 20, 2014 at 4:00PM

Airport Information: The area is serviced commercially through Baltimore/Washington International Airport and privately through Fallston Airport (W42) (410) 877-9889

Motel Information: Holiday Inn Express Edgewood-Aberdeen-Bel Air 2118 Emmorton Park Drive, Edgewood, MD 21040 (410) 612-1200

Days Inn Edgewood 2116 Emmorton Park Drive, Edgewood, MD 21040 (410) 671-9990

Hampton Inn and Suites 2110 Emmorton Park Drive, Edgewood, MD 21040 (410) 670-6000

Sale Site Phone: (800) 233-6898 (Beginning August 4, 2014) • Sale Site Fax: (888) 859-8958

PIPE TOOLS AND SURVEY INSTRUMENTS

MCELROY No. 14 Fusion Machine, facer plate and heater kit, 120 volt • (2) Gas Powered Hydrostatic Test Pumps • **CHERNE** 22"-26" Manhole Test Plug • (2) **CHERNE** 15"-30" Pipe Plug • Assorted Inflatable Test Plugs • **SCHONSTEDT** Heliflux Magnetic Locator • **BW TECHNOLOGIES** Multi-Gas Leak Detector • **MUELLER** B100 Pipe Tap • **MUELLER** Pipe Tap • **HERSEY** 1-1/2" Water Meter • **RIDGID** 48" and 36" Pipe Wrenches • **TOPCON** TP-L4BG Pipe Laser • **SPECTRA-PHYSICS** Dialgrade Pipe Laser • **SPECTRA-PHYSICS** 1160 Pipe Laser • **TOPCON** RL-H2Sa Rotating Laser • **TOPCON** RLH Rotary Laser • **DAVID WHITE** 8300 Transit • **DAVID WHITE** ALT6-900 Auto Level Transit

ROAD SAFETY AND PROJECT MATERIAL



Matting • PVC SDR35 and SCH40 PVC Conduit • SDR11 3" Water Line • 4" Flex Drain Tile, ABS black pipe • Super Silt Fence • Precast Pipe, Inlets, Risers, and Basins

(1,000+/- Ft.) 42" Concrete Barrier (MD DOT Spec)
• Fabric and Metal Road Signs • **WINDMASTER** Sign Stands • Safety Barrels and Weights • (12) Attenuator Barrels • (3 Rolls) Filter Cloth and Erosion

AIR COMPRESSORS, POWER MULCHERS, AND MISCELLANEOUS

1987 INGERSOLL RAND P100WD, 100 CFM Portable Air Compressor, s/n 165480U87136, Deutz diesel engine. In fair condition.

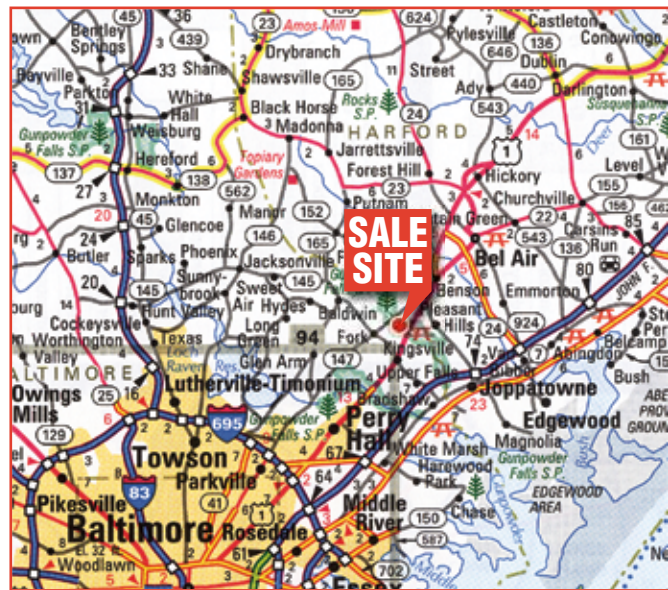
SMITH 100CFM Portable Air Compressor, Ford 4 cylinder gas engine. In fair to good condition.

FORD 800 Tractor, 4 cylinder gas, 5 speed, 3-point hitch, with 60" brush hog. (No Battery; Not Running)

REINCO Skid Mounted Power Mulcher, Kohler gas. In fair to good condition.

AGRIMETAL Power Mulcher, Honda 11HP, with bale chopper (Bad Engine)

OVER-LOWE Portable Arrowboard, B&S gas. In fair to good condition.



OFFICE TRAILER AND VAN STORAGE TRAILERS



12'X50' OFFICE TRAILER

12'x50' Office Trailer, HVAC, lavatory. (Tires Need Replaced) (Reserved For Use As Settlement Office; Remove After 8/20/14)

(3) 40' Van Storage Trailers (Aluminum and Stainless Steel) • 20' Aluminum Van Storage Trailer

HYDRAULIC EXCAVATORS AND ATTACHMENTS



1994 CATERPILLAR 322L, s/n 9RL00519, Cat 3116 diesel engine and hydraulic drive, e/w 9'6" dipper stick, 36" digging bucket, vandal guards, and 31.5" TBG pads. In fair to good condition with fair to good undercarriage.



'94 CAT 322L

1998 CATERPILLAR 320BL, s/n 6CR02480, Cat diesel engine and hydraulic drive, e/w 11'6" dipper stick with Wain Roy coupler, 48" digging bucket, 26" mechanical thumb, and 31.5" TBG pads. In good condition with fair to good undercarriage.

'98 CAT 320BL



1998 CATERPILLAR 312BL, s/n 8JR00704, Cat diesel engine and hydraulic drive, e/w 10' dipper stick with Wain Roy coupler, 36" digging bucket, and thumb bracket. In fair condition with fair to good undercarriage.



'98 CAT 312BL

2000 TAKEUCHI TB135 Mini, s/n 13511337, Yanmar diesel engine and hydraulic drive, e/w 64" dipper stick with hydraulic beyond and manual coupler, swing boom, 64" backfill blade, ROPS canopy, and 12" rubber tracks. In fair to good condition with fair to good undercarriage.

'00 TAKEUCHI TB135

WAIN ROY 24" and 30" Digging Buckets (Cat 320/312)

CRAWLER LOADERS



2002 CATERPILLAR 953C, s/n 2ZN04727, Cat 3116 diesel engine and hydrostatic transmission, e/w general purpose loader bucket with teeth and segments, enclosed ROPS cab with air conditioning, and 20" DBG pads. In good condition with good undercarriage.



'02 CAT 953C

2002 CATERPILLAR 953C, s/n 2ZN05077, Cat 3116 diesel engine and hydrostatic transmission, e/w general purpose loader bucket with teeth, ROPS canopy, and 19.5" DBG pads. In good condition with fair to poor undercarriage.

'02 CAT 953C

CRAWLER TRACTORS



2003 CATERPILLAR D5G LGP, s/n FDW01047, Cat 3046 diesel engine and hydrostatic transmission, e/w 6-way blade, Topcon grade control system, 3rd valve, enclosed ROPS cab with air conditioning, and 26" SBG pads. In good condition with fair to poor undercarriage.



'03 CAT D5G LGP

1994 CASE 850G Long Track, s/n JJG0217338, Case diesel engine and shuttle transmission, e/w 6-way blade, ROPS canopy, and 18" SBG pads. In good condition with fair to good undercarriage.

'94 CASE 850G LONG TRACK

RUBBER TIRED LOADER AND FORK ATTACHMENT



1990 CASE 621ZF, s/n JAK0021258, Case diesel engine and powershift transmission, e/w general purpose loader bucket with bolt-on cutting edge, ACS hydraulic coupler, front auxiliary hydraulics, enclosed ROPS cab, and 20.5-25 tires. In good condition with good tires. (Reserved For Use During Loadout Thru 8/20/14)

ACS 48" Fork Attachment

4X4 EXTEND-A-HOES AND ATTACHMENTS



2002 CATERPILLAR 420D-IT, s/n BLN02472, Cat diesel engine and shuttle transmission, e/w general purpose loader bucket, 24" digging bucket, front coupler with auxiliary hydraulics, ride control, enclosed ROPS cab with air conditioning, 12.5x80-18 front and 19.5L24 rear tires. In fair to good condition with fair to poor tires.

'02 CAT 420D-IT 4X4 E-HOE

2002 CASE 580 Super M, s/n JJG0374016, Case diesel engine and shuttle transmission, e/w general purpose loader bucket, 24" digging bucket, 2-stick controls, and enclosed ROPS cab. In good condition with fair to good tires.



'02 CASE 580 SUPER M 4X4 E-HOE



2002 CASE 580 Super M, s/n JJG0374027, Case diesel engine and shuttle transmission, e/w general purpose loader bucket, 24" digging bucket, 2-stick controls, enclosed ROPS cab with air conditioning, 12-16.5 front and 19.5L-24 rear tires. In good condition with fair tires.

'02 CASE 580 SUPER M 4X4 E-HOE

1994 CASE 580 Super K, s/n JJG0183231, Case diesel engine and shuttle transmission, e/w general purpose loader bucket, 24" digging bucket, 2-stick controls, and enclosed ROPS cab. In fair condition with very good front and poor rear tires.



'94 CASE 580 SUPER K 4X4 E-HOE



1987 CASE 580K, s/n 17417948, Case diesel engine and shuttle transmission, e/w general purpose loader bucket, 24" digging bucket, ROPS canopy, 12-16.5 front and 17.5-24 rear tires. In fair to good condition with fair to good tires. **Attachments:** 48" Fork Attachment (420D) • Digging Buckets: 18"; 16" & 12" (Cat 420) • 24" & 18" (Case 580)

'87 CASE 580K 4X4 E-HOE

SKID STEER LOADERS AND ATTACHMENTS

2003 TAKEUCHI TL140 Crawler, s/n 21400154, diesel engine and hydrostatic transmission, e/w 66" general purpose loader bucket, standard hydraulics, and enclosed ROPS cab. In fair to good condition with fair undercarriage.



'03 TAKEUCHI TL140

1993 CASE 1840, s/n JAF0099868, Case diesel engine and hydrostatic transmission, e/w 64" general purpose loader bucket with bolt-on cutting edge, standard hydraulics, ROPS canopy, and 10-16.5 tires. In good condition with fair tires. (Reserved For Use During Loadout Thru 8/20/14)



'93 CASE 1840

1999 NEW HOLLAND LX665, s/n 69463, diesel engine and hydrostatic transmission, e/w 60" general purpose loader bucket, standard hydraulics, ROPS canopy, and 10-16.5 tires. In fair to good condition with fair to good tires.



'99 NEW HOLLAND LX665 (HAMMER SOLD SEPARATELY)

STANLEY MB05 Demolition Hammer, s/n 002511023. In good condition.

BRADEN 6-Way Dozer Blade, s/n 92752, 84" with cutting edge. In good condition.

76" General Purpose Loader Bucket • 48" Fork Attachment (TL140) • 48" Fork Attachment (LX665) • **SWEEPSTER 60"** Hopper Broom. In good condition. (TL140)

COMPACTORS AND ROLLERS

1996 BOMAG BW172D-2, s/n 109520120457T, Deutz diesel engine and hydrostatic transmission, e/w 66" smooth drum, drum drive, ROPS canopy, and 14.9-24 tires. In fair to good condition with fair to good tires.



'96 BOMAG BW172D-2

1990 CASE W602BD, s/n JKC8403912, Case/Cummins diesel engine and hydrostatic transmission, e/w 69" smooth drum, roll post, and 18.6-28 tires. In fair to good condition with good tires.



'90 CASE W602BD

2000 STONE PDB43 Padfoot, s/n 042006072, JD Powertech 2.9L diesel engine and hydrostatic transmission, e/w 44" padfoot drum, 57" leveling blade, ROPS canopy, and 9.50-16 tires. In good condition with good tires.



'00 STONE PDB43

1999 WACKER RD11A Tandem Vibratory Roller, s/n 5045293, Honda GX610, 18HP gas engine and hydrostatic transmission, e/w 35" smooth drums and roll-bar. In fair to good condition.



'99 WACKER RD11A

2008 RAMMAX P33/24 HHMR Trench Compactor, s/n 1538472, Hatz diesel engine, e/w 33" padfoot drum. In good condition.

2001 RAMMAX P33/24HMR Trench Compactor, s/n 332527, Hatz diesel engine, e/w 24" padfoot drum. In fair to good condition. (Meter Reads 0,013 Hours-Replaced)

1984 BOMAG BW142AD, s/n 510115923, e/w 56" smooth drum and 12.4-24 tires. (Engine Removed; Bad Crank Shaft; Will Sell With Machine)



'08 RAMMAX P33/24 HHMR



'01 RAMMAX P33/24 HMR

TRUCK TRACTOR AND LOWBOY

1999 MACK CH613 Tandem Axle Truck Tractor, Mack diesel engine and Eaton Fuller 9 speed transmission, e/w 38,000# rears, engine brake, wetline system, aluminum wheels, air ride suspension, single frame, air slide 5th wheel, air conditioning, cruise control, and 11R22.5 tires. In good condition with good tires.



1995 TALBERT TDW-35S-HRG-1-T1, 35 Ton Tandem Axle Lowboy Trailer, e/w non-ground bearing hydraulic detachable, 21'6" x 8'6" load deck, spring suspension, outriggers and chain dogs, and 255/70R22.5 tires. In good condition with good tires.

'99 MACK CH613 AND
'95 TALBERT 35 TON

DUMP TRUCKS

2006 MACK CV713 Granite Tri-Axle, AMI-370 diesel engine and Maxitorque T310M/MLR, 10 speed transmission with multi-speed reverse, e/w OX 16" steel dump body with air gate and power tarp, engine brake, heated mirrors, air conditioning, cruise control, 385/65R22.5 front and 11R22.5 rear and lift tires. In good condition with good tires. (All Axles New Drums and Brakes; Less Than 1,000 Miles)



'06 MACK CV713 GRANITE

1999 MACK RD688S Tri-Axle, Mack E7-350 diesel engine and Eaton Fuller 8LL transmission, e/w OX 17" steel dump body with air gate and power tarp, tow package with air, aluminum front wheels, air conditioning, cruise control, and 11R22.5 tires. In fair to good condition with fair to poor tires.



'99 MACK RD688S

TRENCH BOXES AND ROAD PLATE

GME 8'x14'x4" Double Wall Trench Box, with 48" spreaders. In good condition • **8'x16'x4"** Trench Box (No Spreaders) • (2) **6'x12'x4"** Trench Boxes. In good condition (36" & 48" Spreaders) • (2) **6'x6'x3"** Trench Boxes, with 36" spreaders • **8'x9'** Manhole Box. In fair condition • Gravel/Bedding Box. In fair condition. **Road Plate:** (2) **8'x14'x3/4"** • (2) **6'x12'x3/4"** • (2) **6'x12'x1"** • **5'x10'x3/4"** • (3) **8'x6'6"x7/8"** • **8'x6'x7/8"** • **8'x4'x3/4"** • (2 Pieces) **6'x4'x3/4"** • (2 Pieces) **7'x8"**

CONTRACTORS TOOLS AND EQUIPMENT

(3) 500 Gallon Fuel Tanks, with 12 volt pumps • **EDCO 18"** Concrete Saw, Kohler 18HP gas, hydrostatic drive (New Starter, Belts, & Battery) • **WACKER WP1550**, 18" Plate Compactor • **VIBROMAX AV600**, 14" Plate Compactor • **MIKASA 1-1/2"** Concrete Vibrator • **HONDA WB30X**, 3" Centrifugal Pump • **WACKER PT2**, 2" Trash Pump • **HONDA WB20X**, 2" Centrifugal Pump • **HONDA 2"** Centrifugal Pump • (2) 3" Diaphragm Pumps, gas • 2" & 3" Suction and Discharge Hose • **FAST-CUT Demo Saw** • (2) **STIHL MS290**, 20" Chain Saw • **POWERMATE 3750 Watt Generator** • **HONDA 2500 watt Generator** • **BLACK & DECKER Macho V 1-1/2"** Rotary Hammer

SHOP TOOLS AND EQUIPMENT

(2) 120 Gallon Poly Lube Tank (15W40 Oil and Trans Fluid), pneumatic pump, hose reel, and metered gun • **NORTH STAR 2,000 PSI Electric Pressure Washer**, heat • **LINCOLN AC225 Amp Arc Welder** • Oxygen/Acetylene Torch Set • **STANDARD Shop Engine Hoist** • **SHAMROCK 60,000# Shop Press** (No Jack) • Parts Washer • **CRAFTSMAN 6HP**, 33 Gallon Air Compressor, 110 volt • **INGERSOLL RAND 285B**, 1" Impact Wrench • 3-Ton Floor Jack • Pneumatic Bottle Floor Jack • Jack Stands • **SEARS 12 Volt Battery Charger/Booster** • Pneumatic Luber • (2) Air Pigs • **DAYTON 8"** Pedestal Grinder • **BLACK & DECKER 7-1/4"** Circular Saw • **RYOBI 7-1/4"** Circular Saw • Assorted Hand Tools and Toolboxes

PICKUP AND UTILITY TRUCKS



'05 CHEVY 2500 4X4

2005 CHEVROLET 2500, 4x4 Crew Cab Pickup, Vortec 6.0L gas engine and automatic transmission, e/w 8' bed with Knapheide utility cab, air conditioning, cruise control, and LT245/75R16 tires. In fair to good condition with fair to good tires.

2004 CHEVROLET 2500HD, 4x4 Crew Cab Pickup, Vortec 6.0L gas engine and automatic transmission, e/w 8' bed with enclosed utility cap, side boxes, and air conditioning. In good condition with good tires.



'04 CHEVY 2500HD 4X4

2000 CHEVROLET 3500HD Utility, automatic transmission, e/w Knapheide 11' open utility body, fuel cell with pump, dual rear wheels, and 225/70R19.5 tires. In fair to good condition with good tires. (Not Running; Diesel Removed; Replaced With Chevy 350 4-Bolt Main with Edelbrock Carb; Engine Good; Needs Driveshaft Cut and Replaced)



'03 FORD F-250XL 4X4

2003 FORD F-250XL Super Duty 4x4 Pickup, Triton 5.4L gas engine and automatic transmission, e/w 8' bed, Boss quick mount snowplow, stepped fuel tank with pump, cross toolbox, air conditioning, cruise control, and 235/85R16 tires. In fair to good condition with good tires.

2001 CHEVROLET 1500 Silverado 4x4 Extended Cab Pickup, Vortec 4.8L gas engine and automatic transmission, e/w 8' bed, power windows and locks, air conditioning, cruise control, and 245/75R16 tires. In fair to good condition with good tires.



'01 CHEVY 1500 SILVERADO 4X4



'00 FORD F-150 4X4

2000 FORD F-150, 4x4 Pickup, 4.2L, V-6 gas engine and 5 speed transmission, e/w 8' bed, 100 gallon fuel cell with pump, and air conditioning. In fair to good condition with good tires.

1997 FORD F-250HD, 4x4 Extended Cab Pickup, gas engine and automatic transmission, e/w Meyer plow package, 8' bed with material rack, cross toolbox, fuel cell with pump. In fair to good condition with fair tires. (2) **MEYER 8"** Plow Blades

FUEL/LUBE TRUCK

1981 FORD F700 Single Axle, diesel engine and 5 speed transmission, e/w 12'6" flatbed, approximately 1,000 gallon fuel tank with pump and meter, 100 gallon oil, 55 gallon drum lube cans, all with pumps, (4) product reels, and 9.00R20 tires. In fair to poor condition with good tires.

TAG-A-LONG TRAILERS

1996 EAGER BEAVER 20HALX 20 Ton Tandem Axle, e/w 19'x8'6" deck, beavertail and ramps, 47,900# GVWR, air brakes, and 215/75R17.5 tires. In fair to good condition with fair to good tires.

2006 TOW MASTER T-12DD, 6 Ton Tandem Axle, e/w 16'x6'8" deck, ramps, 14,900# GVWR, electric brakes, and 235/85R16 tires. In fair to good condition.

DOOLITTLE, e/w 12'x6'4" deck, ramps, and 7.00-15 tires. In fair condition. (No VIN Plate) (Fuel Tank On Top)

Tandem Axle Tag-A-Long Trailer, 12'x6'6" with ramps. In fair condition. (No VIN Plate)