

ABSOLUTE AUCTION

COMPLETE LIQUIDATION



FRANK M. SHEESLEY COMPANY



THURSDAY, JUNE 16, 2011 - 9:00AM
Johnstown, Pennsylvania

JOHN DEERE 160



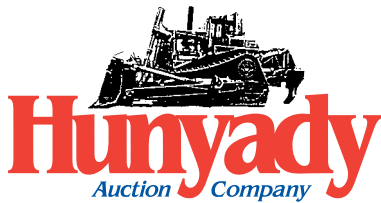
'05 JOHN DEERE 650JLT



REINERT GP736



SKID STEERS



1440 COWPATH RD. • HATFIELD, PA 19440
215/361-9099 • Fax: 215/361-9212
www.hunyady.com

PRE-SORTED
FIRST CLASS MAIL
US POSTAGE
PAID
HAVERTOWN, PA
PERMIT #45



NEVER A BUYER'S PREMIUM!



FRANK M. SHEESLEY COMPANY



Notice: After over (100) years in the construction business, the partners of Frank M. Sheesley Company have decided to retire and liquidate completely. Everything in the auction is owned by Frank M. Sheesley Co. and must sell to the highest bidder regardless of price and without Buyer's Premium!

Location: The auction will be held at the Sheesley facility located at 1464 Frankstown Road, Johnstown, Pennsylvania 15907

Auctioneer's Note: The majority of equipment and tools have been purchased new by the company. Please plan to attend!

Terms: Payment in full is required on sale day by cash, certified funds, or check with a bank letter of guarantee. Sample letter of guarantee: "We hereby guarantee the payment of our customer _____ written on his account up to _____ dollars for purchases at your auction sale on June 16, 2011." All guaranteed checks should be made payable to Hunyady Auction Co.

Sales Tax: Since this contractor is selling items not normally sold in the course of his business, the Commonwealth of Pennsylvania considers this an isolated sale and does not require the auction company to collect sales tax.

Financing: Financing is available, please contact Susan (215) 361-9099 at the auction company for details.

Inspection: Items will be available for inspection one week prior to the auction, beginning June 9th, from 8:00 a.m. to 5:00 p.m. or sale day morning from 7:00 a.m. to 9:00 a.m. The site will be closed Saturday and Sunday, June 11th and 12th.

Removal: After complete payment, all sale items may be removed on sale day as long as the removal activity is not disruptive to the sale and only until 5:00 p.m. Items may also be removed Friday, June 17th as well as Monday, June 20th thru Thursday, June 23rd, from 8:00 a.m. to 5:00 p.m. All items must be removed no later than Thursday, June 23, 2011 at 5:00 p.m.

Sale Site Directions: FROM ROUTE 219 SOUTHBOUND: Mile Marker #55: Exit at Galleria Drive, at end of the ramp turn right and proceed to traffic light at Solomon Run Road. Turn right and proceed (0.4) miles to Airport Road. Continue straight on Airport Road for (2.3) miles to Frankstown Road. Turn left and continue (1.4) miles to auction site on left.

FROM ROUTE 219 NORTHBOUND: Just Past Mile Marker #54: Exit at Galleria Drive, at end of the ramp turn left and proceed to 2nd traffic light at Solomon Run Road. Turn right and proceed (0.4) miles to Airport Road. Continue straight on Airport Road for (2.3) miles to Frankstown Road. Turn left and continue (1.4) miles to auction site on left.

FROM PITTSBURGH AND THE WEST: FROM US ROUTE 22: Take either Route 56 or Route 403 South toward Johnstown (the roads merge in Johnstown). In downtown Johnstown turn left onto Washington Street and cross river. Proceed (100) yards to Johns Street, turn right and follow (100) yards to Main Street. Turn left (Main Street turns into Frankstown Road), proceed (2.8) miles to auction site on right.

Airport Information: This area is serviced both commercially and privately through John Murtha Johnstown-Cambria County Airport (814) 536-0002 Rental cars are available.

Motel Information: Holiday Inn; 250 Market Street, Johnstown, PA (814) 535-7777 • Sleep Inn; 453 Theater Drive, Johnstown, PA (814) 262-0198 • Super 8; 627 Solomon Run Road, Johnstown, PA (814) 535-6000

Sale Site Phone: (814) 536-5303 • Sale Site Fax: (888) 859-8958

CONTRACTORS TOOLS

CAT Final Drive Puller with case • (Approx. 20) Aluminum Speed Shoring
• **JET-A-WAY** 2500 Portable Kerosene Heater, s/n 23684, 110 volts. In good condition. • Hydraulic Cable Crimper with dies • (7) Shop Vacs • (50+/-) Propane Heaters (Need Repairs) • Large Assortment of Steel Slings (Mostly New) • **MASTER** B600D, 600,000 BTU Torpedo Heater, s/n 4738344 (Needs Repairs) • **KOEHRING** K350, 350,000 BTU Torpedo Heater (Needs Repairs) • **(2) MASTER** 150,000 BTU Torpedo Heaters • **(7) MASTER** 200,000 BTU Torpedo Heaters • **REDDY** 70,000 BTU Torpedo Heater • **NEW** Noise Defining Blanket • Assortment of Signs, Windmasters, Cones • Assortment of Aluminum and Fiberglass Extension Ladders • (7) 9" Repair Benches (New) • **GOODALL** 12 Volt Start-All (Needs Repair) • 14' Aluminum Boat • Assorted Wheelbarrows • Job Boxes: **(1) RIDGID** • **(8) KNAACK** • **(1) GREENLEE** • **(3) GREENLEE** Piano Boxes • Large Assortment of Shovels, Brooms, Rakes, Sledge Hammers, Track Shovels, Picks, Spud Bars, Posthole Pounders, Aluminum Bull Floats • Large Assortment of Flagger Signs • (4) Stretchers • **RIDGID** Pipe Threader with 1"-4" dies • **HILTI** DXA241 Powder Actuated Nail Guns with magazines • **HILTI** DX36M Powder Actuated Nail Guns with magazines • **(4) UNION SPECIAL** Fabric Sewing Machines with case • (3) Pneumatic Nail Guns • Assorted Test Plugs • (3) Stud Drivers • Assorted Cement Finishing Tools • **DBI/SALA** Winch • (3) Wooden Blast Boxes • Large Assortment of Caulking Guns, Extension Cords, Torch Leads and Gauges, Cable Come-A-Longs, Chain Come-A-Longs, Slings, Chokers, Ropes, Hardware • **(4) RIDGID** Tri-Stands • (2) 9 Ton Sheet Piling Scales • (12) Assorted Aluminum Straight Edges • (3) Crossbed Tool/Fuel Tanks • Assorted Road Sign Post (New) • Assorted Plastic/Steel Fuel Cans



SHOP TOOLS

JOHN DEERE PR-3400GH Pressure Washer, Honda 9HP (New) • **DEWALT** 357C, 14" Radial Arm Saw, 220 volt, 3-phase • **RED ARROW** 30 Ton Shop Press • (8) Torch Carts • **KALAMAZOO** 110 Volt Portable Electric Bandsaw • **(2) TITAN** 500# and 100# Sandblaster Pots • Torch Bottle Rack • **PROTO** Tool Box and contents • (10) Pipe Stands • Assortment of 2"-2-3/8" Box End Wrenches and Lug Wrenches • (3) Steel Work Benches with vise and grinder • (2) Steel Cabinets • **CENTRAL** 4 Ton Hydraulic Portable Puller • Steel Banding Tools & Accessories • Assorted Tools, Port-A-Powers, Bolt Cutters, Hammers, Grease Guns • (3) 1/2" Air Impact Wrenches • (3) Air Grinders • Air Ratchet • CP Chipper Gun • CP Zip Gun • (2) Needle Scalars • Orbital Jitterbug Sander • Pistol Grip Sander • 3/4" Air Impact Wrench • (2) 1" Air Impact Wrenches • Portable Dowel Drill • Anvil and Vise • Pedestal Grinder • **MULLINER** Machine Tool Lathe • Assorted Chain Falls • (96) Assorted **PROTO**, **SNAP-ON** and **MAC** 3/4" Drive Impact Sockets • Floor Jacks

AUGER CAST GROUT PUMPS AND ACCESSORIES



REINERT GP736

2007 REINERT Model GP736 Portable Grout Pump, s/n 736110907, powered by Perkins 4 cylinder diesel engine and Vickers pumps, equipped with 70 cubic yard per hour output capacity, Reinert pump, dual pistons, and 9-14.5 tires. In very good condition with very good tires. **(117 Original Hours)** 250' of 3" Grout Pump Slick Lines • (2) Nozzle and (2) Elbow Grout Pumps

2007 REINERT Model GP736 Portable Grout Pump, s/n 736121107, powered by Perkins 4 cylinder diesel engine and Vickers pumps, equipped with 70 cubic yard per hour output capacity, Reinert pump, dual pistons, and 9-14.5 tires. In very good condition with very good tires. **(UNUSED)**

REAL ESTATE

(Sold Subject To Owner's Immediate Confirmation @ 12:00 Noon)

(2) Parcels
Consisting of: (4.7+/-) acres with public utilities. 20,169 square foot office/shop building
 • 2,688 square foot pole barn.

Zoning: Light Industrial

Terms: 10% Deposit Sale Day
 • Settlement Within (90) Days

Contact Auction Company for Additional Information!



SHEESLEY REAL ESTATE

SYMONS FORMS AND PARAPET FORMS



(26,214+/-) Sq. Ft. Total, consisting of:
 (Panels To Be Sold By The Square Foot)

8' Forms (12,235 sq. ft. total):

(554) 8'x2' (40 New) = 8,864 sq. ft.
 • (82) 8'x22" = 1,203 sq. ft. • (25) 8'x20" = 333 sq. ft. • (16) 8'x18" = 192 sq. ft. • (18) 8'x16" = 192 sq. ft. • (15) 8'x14" = 140 sq. ft. • (125) 8'x12" = 1,000 sq. ft. • (19) 8'x10" = 127 sq. ft. • (18) 8'x8" = 96 sq. ft. • (10) 8'x6" = 40 sq. ft. • (18) 8'x4" = 48 sq. ft.

6' Forms (5,610 sq. ft. total):

(361) 6'x2' (100 New) = 4,332 sq. ft.
 • (5) 6'x22" = 550 sq. ft. • (22) 6'x20" = 220 sq. ft. • (2) 6'x18" = (18 sq. ft.) • (8) 6'x16" = 64 sq. ft. • (24) 6'x14" = 168 sq. ft. • (20) 6'x12" = 120 sq. ft. • (15) 6'x8" = 60 sq. ft. • (16) 6'x6" = 48 sq. ft. • (15) 6'x4" = 30 sq. ft.

5' Forms (1,028 sq. ft. total):

(77) 5'x2' (20 New) = 770 sq. ft. • (10) 5'x22" = 92 sq. ft. • (2) 5'x20" = 17 sq. ft. • (5) 5'x18" = 38 sq. ft. • (2) 5'x14" = 12 sq. ft. • (14) 5'x12" = 70 sq. ft. • (5) 5'x10" = 21 sq. ft. • (2) 5'x6" = 5 sq. ft. • (2) 5'x4" = 3 sq. ft.

SYMONS FORMS

4' Forms (5,685 sq. ft. total): (571) 4'x2' (100 New) = 4,568 sq. ft.
 • (56) 4'x22" = 410 sq. ft. • (26) 4'x20" = 173 sq. ft. • (23) 4'x18" = 138 sq. ft. • (18) 4'x16" = 95 sq. ft. • (30) 4'x14" = 140 sq. ft. • (18) 4'x12" = 72 sq. ft. • (12) 4'x10" = 40 sq. ft. • (14) 4'x8" = 37 sq. ft. • (2) 4'x6" = 4 sq. ft. • (6) 4'x4" = 8 sq. ft.

3' Forms (1,656 sq. ft. total): (249) 3'x2' (100 New) = 1,494 sq. ft.
 • (10) 3'x20" = 50 sq. ft. • (5) 3'x16" = 20 sq. ft. • (5) 3'x14" = 17 sq. ft. • (13) 3'x12" = 39 sq. ft. • (6) 3'x10" = 15 sq. ft. • (11) 3'x6" = 16 sq. ft. • (5) 3'x4" = 5 sq. ft.

Parapet Forms: (13) 10'Lx42"H Parapets and (4) 10'Lx33"H Parapets

Inside Corner Forms: (7) 2' • (22) 3' • (53) 4' • (4) 5' • (33) 6' • (19) 8' • **Hinge Corner Forms:** (9) 3' • (9) 6' • (3) 8' • Assorted Fillers, Corners, and Outside Corners • (9) Pallets of **SYMONS** Form Hardware

HYDRAULIC EXCAVATORS AND ATTACHMENTS



2006 JOHN DEERE Model 160CLC Hydraulic Excavator, s/n FF160CX045438, powered by John Deere diesel engine and hydraulic drive, equipped with 10' dipper stick, 24" digging bucket, hydraulic beyond, heat and air conditioning, 12"8" crawlers, and 24" TBG pads. In good to very good condition with good undercarriage. **(2,328 Original Hours)**

JOHN DEERE 160CLC

1998 JOHN DEERE Model 160LC Hydraulic Excavator, s/n P00160X040233, powered by John Deere diesel engine and hydraulic drive, equipped with 10' dipper stick, 42" digging bucket, 12"7" crawlers, and 24" TBG pads. In good condition with good undercarriage.



JOHN DEERE 160LC

1990 JOHN DEERE Model 790DLC Hydraulic Excavator, s/n FF790DL008228, powered by John Deere diesel engine and hydraulic drive, equipped with 11'6" dipper stick, 46" digging bucket, 15'6" crawlers, and 32" TBG pads. In good condition with good undercarriage. (Weak Hydraulic Pump)



JOHN DEERE 790DLC

36" Digging Bucket (Fits JD 160) • **ESCO** 26" Digging Bucket (Fits JD 790) • **ESCO** 36" Digging Bucket (Fits JD 490) • **ADJUST-A-BUCKET** Twist-A-Wrist (Fits JD790)

COMPACTORS AND ROLLERS



2001 WACKER Model RD11A Vibratory Roller, s/n 5252624, powered by Honda 18HP gas engine and hydrostatic transmission, equipped with 36" smooth drums, drum drive, water package, and ROPS canopy. In very good condition.

'01 WACKER RD11A

1985 BOMAG Model BW142PD Vibratory Padfoot Compactor, s/n 510117075, powered by Deutz diesel engine and hydrostatic transmission, equipped with 56" drum, drum drive, and 14.9-24 tires. In good condition with good tires.

BROS Vibratory Compactor, s/n Unknown, powered by Detroit diesel engine and hydrostatic transmission, equipped with 102" smooth drum, ROPS canopy, and 29.1-25 tires. In poor to fair condition with poor to fair tires. (Bad Transmission)

WACKER Model W74A Walk-Behind Vibratory Roller, s/n 681806531, powered by Honda 11HP gas engine and hydrostatic transmission, equipped with (2) 29" smooth drums. In good condition.

48" Double Drum Sheepsfoot Roller



BOMAG BW142PD

CRAWLER TRACTOR

2005 JOHN DEERE Model 650JLT Crawler Tractor, s/n T0650JX105539, powered by John Deere diesel engine and hydrostatic transmission, equipped with 6-way blade, enclosed ROPS cab with heat and air conditioning, tow hitch, 10' crawlers, and 18" SBG pads. In very good condition with very good undercarriage. **(1,032 Original Hours)**

TRACTOR LOADER BACKHOES AND ATTACHMENTS



1997 JOHN DEERE Model 310SE, 4x4 Tractor Loader Extend-A-Hoe, s/n T0310SE827704, powered by John Deere diesel engine and shuttle transmission, equipped with general purpose loader bucket, 18" digging bucket, fork brackets, enclosed ROPS cab, 12.5L-80/18 front and 19.5L-24 rear tires. In good condition with good tires.

JOHN DEERE 310SE & 310D

1992 JOHN DEERE Model 310D, 4x4 Tractor Loader Backhoe, s/n T0310DG785929, powered by John Deere 4 cylinder diesel engine and shuttle transmission, equipped with 24" digging bucket, hydraulic beyond, enclosed ROPS cab, 12-16.5 front and 19.5L-24 rear tires. In good condition with good tires.

JD 310 Buckets: 12" and 30" • **JD 310/410 Buckets:** 12" and 24" • 60" Hanging Forks

SKID STEER LOADERS AND ATTACHMENTS, AND LANDSCAPE IMPLEMENTS



2007 JOHN DEERE Model CT322 Crawler Skid Steer Loader, s/n T0332TA141175, powered by John Deere diesel engine and hydrostatic transmission, equipped with 82" bucket, auxiliary hydraulics, and 18" rubber tracks. In good condition with good undercarriage. **(719 Original Hours)**

'07 JOHN DEERE CT322

2002 CATERPILLAR Model 236 Skid Steer Loader, s/n CAT00236V4YZ05054, powered by Perkins diesel engine and hydrostatic transmission, equipped with 66" bucket, ROPS canopy, pilot controls, light package, and 12-16.5 NHS tires. In good condition with poor and good tires.



'02 CAT 236

1997 BOBCAT Model 773 Skid Steer Loader, s/n 509643297, powered by Kubota diesel engine and hydrostatic transmission, equipped with 66" general purpose bucket, ROPS canopy, light package, and 10-16.5 tires. In good condition with good tires.

BOBCAT B950 Demo Hammer
• **BOBCAT 72" Hydraulic Sweeper Attachment** • **BOBCAT 72" Sweeper** • (3) Skid Steer Forks
• **HOWARD 60"** Rototiller
• 10' Landscape Drag • **BRILLION SLP8, 8' Grain Drill**, s/n 186458, 3-point hitch. In good to very good condition • **GRADEMASTER 7' Box Scraper**, 3-point hitch, with rear float wheels



BRILLION GRAIN DRILL

FORKLIFTS



'03 I-R RT708H

2003 INGERSOLL-RAND Model RT708H, 8,000# Rough Terrain Forklift, s/n 174570, powered by Cummins B3.9 diesel engine and shuttle transmission, equipped with 3-stage mast, 48" forks, side shift, ROPS canopy, 18.4-24 front and 11L-16 rear tires. In good condition with good tires.

ALLIS CHALMERS Model 700D, 5,000# Rough Terrain Forklift, s/n 1278, powered by Perkins 4 cylinder diesel engine and shuttle transmission, equipped with 21' 3-stage mast, 48" forks, side shift, FOPS canopy, 18.4-24 front and 11L-16 rear tires. In good condition with good tires.

YALE 3,000# Forklift, s/n M224751A, powered by Ford 4 cylinder dual fuel engine and shuttle transmission, equipped with 42" 3-stage mast and solid tires. In fair condition with fair tires. (Rebuilt Mast Cylinder)

ARROW 90CE60, 42"-139" 13,000#/3,000# Forklift Boom (NEW) • (2) WRIGHT Self-Dumping Hoppers



ALLIS CHALMERS 700D

PICKUPS, VANS, SUV, AUTO, AND ATV



'06 FORD F-150

2005 CHEVROLET Model 1500, 4x4 Pickup Truck, powered by 5.3L gas engine and automatic transmission, equipped with 8' bed, spray-on liner, tow package, air conditioning, CD player, and 265/70R17 tires. In good condition with good tires.

2006 FORD Model F-150 Extended Cab Pickup Truck, powered by 4.2L gas engine and automatic transmission, equipped with 6'6" bed, 36 gallon cross bed fuel tank, transfer pump, air conditioning, and 235/70R17 tires. In good condition with good tires.



'05 CHEVY 1500 4X4

2004 DODGE Model 1500, 4x4 Crew Cab Pickup Truck, powered by 4.7L gas engine and automatic transmission, equipped with 6'6" bed, tow package, air conditioning, and 245/70R17 tires. In good condition with good tires.



'04 DODGE 1500 4X4

2003 CHEVROLET Model 3500, 15-Passenger Van, powered by 6.0L gas engine and automatic transmission, equipped with air conditioning 245/75R16 tires. In good condition with good tires.



'03 CHEVY 3500

2001 CHEVROLET Model Blazer 4x4 Sport Utility Vehicle, powered by V-6 gas engine and automatic transmission, equipped with power package and 235/70R15 tires. In good to very good condition with good to very good tires.



'01 CHEVY BLAZER 4X4

2006 CHEVROLET Model Impala LS 4-Door Sedan, powered by V-6 gas engine and automatic transmission, equipped with air conditioning, power windows and locks, CD player, and 225/60R16 tires. In good to very good condition with good to very good tires.



'06 CHEVY IMPALA

KAWASAKI Model 550 Mule All Terrain Vehicle, s/n Unknown, powered by Kawasaki 1 cylinder gas engine, equipped with dump body, FOPS canopy, and 22-9.00-10 tires. In fair condition with fair tires.

FLATBED AND WATER TRUCKS



'00 CHEVY 3500

2000 CHEVROLET Model 3500 Flatbed Truck, powered by 5.7L gas engine and automatic transmission, equipped with Knapheide 12' steel flatbed, tow package, air conditioning, and 225/75R16 tires. In good condition with good tires.

1975 MACK Model DM600 Tandem Axle Water Truck, powered by Mack 6 cylinder diesel engine and 10 speed transmission, equipped with 4,000 gallon water tank, ITT hydraulic driven pump, front and rear spray bars, 15-22.5 front and 10-20 rear tires. In poor condition with poor tires. (No Title)

OFFICE, TAG-A-LONG, STORAGE, AND POLE TRAILERS

2008 MARKLINE 10'x50' Office Trailer, equipped with (2) man doors and heater/air conditioning unit. In very good condition with very good tires. (Purchased New-Limited Use)

2004 CESCO 8'x10' Tandem Axle Office Trailer, equipped with rear man door, front tool boxes, air conditioning, 7,000# GVWR, and 205/75R14 tires. In good condition with good tires.

JOBSITE Model 1050, 12'9"x46' Office Trailer, equipped with (3) man doors, air conditioning, and 8-14.5 tires. In fair condition with fair tires.

WELLS CARGO 32' Office Trailer, equipped with (2) man doors and 7-14.5 tires. In fair condition with fair tires.

(2) 8'x24' Office Trailers, equipped with man door, air conditioning unit, and 8-14.5 tires. In good condition with fair tires.

2007 FABRIQUE PAR UT-18CS Tandem Axle Tag-A-Long Trailer, equipped with 16'x96" wood deck, 2' beavertail, 4' ramps, 7,000# GVWR, and 225/75R15 tires. In good condition with good tires.

1969 GENERAL 9 Ton Tri-Axle Tag-A-Long Trailer, equipped with 13'6"x6'4" wood deck, 2'6" beavertail, 3'6" ramps, chain dogs, and 8-14.5 tires. In good condition with good tires.

1969 FRUEHAUF Model FB28F240, 40' Storage Trailer • **STRICK 40' Aluminum Storage Trailer** • **8'x28' Stainless Steel Storage Trailer** • **KORY 6278 Tri-Axle Pole Trailer** • **Shopmade Pole Trailer**. In fair condition with fair tires.



'08 MARKLINE 10'X50'



'04 CESCO 8'X10'

AIR COMPRESSORS, WATER PUMPS, AND ACCESSORIES

1999 INGERSOLL-RAND Model 185WJD, 185 CFM Portable Air Compressor, s/n 284695ULI221, powered by John Deere diesel engine, equipped with 215/70R15 tires. In good condition with good tires.

GORMAN RUPP Model 86A2-5034, 6" Portable Water Pump, s/n 805289, powered by Detroit diesel engine, equipped with 7.75-15 tires. In good condition with good tires.

(2) MAKITA TW310ER, 3" Trash Pumps, Robyn EH25 gas engine • **(3) GORMAN RUPP 3" Electric Submersible Pumps**, 3-phase • **(2) FLYGHT 3" Submersible Pumps**, 3-phase • **EMGLO D8HGA-8P Air Compressor**, Honda 8HP engine • **ROL-AIR MPL4090K17 Air Compressor**, s/n 9406241, Kohler gas engine • **PORTACABLE 2HP Electric Air Compressor**

Assorted Pallets of Air Hoses • (15) 1"-2" Electric Water Pumps • Large Assortment of Breaker Steel • Large Assortment of Drill Steel • Asphalt Breaker • (5) 90# and 60# Breakers • Pneumatic Drill • (3) Chipping Hammers • Large Quantity of Assorted Suction/Discharge Hose

WELDERS AND GENERATORS

LINCOLN Model DC400, 600 Amp DC Mig Welder, s/n AC600943, equipped with 230/460 volt, 400-36 volt duty cycle, wire feed, s/n 126340, 110 volts, mounted on shop cart. In good to very good condition.

2001 LINCOLN Model SP175T Electric Mig Welder, s/n U1011110962, 220 volt, equipped with 130 amp, 230 volt, single phase, 60 Hz. In very good condition.

1975 LINCOLN Model SAM400, 400 Amp Portable Arc Welder/Generator, s/n RA-782151, powered by Detroit diesel engine, equipped with 40 volts, 115 volts AC, and 205/75R14 tires. In fair condition with fair tires.

LINCOLN Model SA400F-245 Portable Welder, s/n 1128080, powered by Continental gas engine, equipped with 230 volts AC 13 amps, 115 volts AC 26 amps, and 205/75R14 tires. In good condition with good tires.

LINCOLN Model Ranger 8 Welder/Generator, powered by Kohler gas engine, 210 DC, 225 AC. In good condition.

MAKITA Model G6100R, 5,800 Watt Gas Powered Generator, s/n 1025653, 110/220 volt. In good condition.

HONDA Model EB6500XA, 6,500 Watt Gas Powered Generator, s/n 1014961, powered by Honda 13HP gas engine, 120/240 volt. In good condition.

(2) PINCORE Model PB42HM5, 4,500 Watt Generators, powered by Briggs & Stratton gas engine.

(6) MAKITA Model G6100R, 6,000 Watt Gas Powered Generators. In fair condition.

PORTERCABLE 5,250 Watt Generator, powered by Briggs & Stratton 10HP gas engine. In fair condition.

(2) MULTIQUIP 6,000 Watt Generators, powered by Honda 11HP gas engine. In fair condition.

WACKER Gas Powered Generator. (Parts Only) • Rod Ovens

AUGER, PILING, CRANE MATS, PLATE, SCAFFOLD, ATTACHMENTS, MATERIALS AND MISCELLANEOUS



24"x10', 24"x26', 24"x22', 24"x20', (2) 18"x20', 18"x24', 18"x25' Hollow Stem Augers • 18"x6', 24"x10', 24"x6' Auger Bits • 36' and 32' Piling Leads • (13) PZ22, 25' Piling, PZ40 • (2) HP74 H-Piling • Assorted H-Piling Cutoffs • (8) 4'x20'x8" Oak Crane Mats (Good) • (5) Assorted Road Plate • Assorted Scaffolding, Pickboards, Jacks, Cross Braces • Large Assortment of Scaffolding Planks • **KENCO** Barrier Lifter • **UNITED STATES CRANE** Model 3-100, 1,000# Man Basket, s/n C26087. (Certified) • Man Basket • (2) 1-1/4 Wrecking Balls • 8' Multi-Paver • **JOHNSON** 20 Ton 3-Sheave Hook Block • **MILLER** 13 Ton Ball • **KOERING** Fairlead • (2) Weighted Hooks • 2-Sheave Hook Block • (3) Concrete Buckets • **ESCO** 36" Digging Bucket (Fits Gradall) • 16", 12", 18", 20" Assorted Buckets • **OWEN** 1 Yard Clamshell Bucket • (3) 34"x24" Load Test Beams • 20"x94" Galvanized Steel Corrugated Pipe • 13"x90" Galvanized Steel Corrugated Pipe • (2) 15"x32" Galvanized Steel Corrugated Pipe • Assorted Concrete Precast • Miscellaneous Rebar • Assorted Pallets of 3-Phase Electric Wire • 150 and 300 Gallon Poly Tanks • **DETROIT** V-12 Engine (Parts Only) • **(2) BOMAG** Walk-Behind Rollers (Parts Only) • Large Mechanical Shear • Large Assortment of Concrete, Penny, Common, Drywall and Scaffold Nails • Large Assortment of **RICHMOND** All Thread, 6"-39" Wall Ties, Cat Heads, Clamps, Wedge Bolts, Rebar Cabs • Large Assortment of Pulleys, Wedge Sockets, Lifting Lugs, Shackles, C-Clamps, Lifting Eyes, Anchor Bolts • Large Assortment of Chamfer Sticks (New)

CRANE MATS

24"x10', 24"x26', 24"x22', 24"x20', (2) 18"x20', 18"x24', 18"x25' Hollow Stem Augers • 18"x6', 24"x10', 24"x6' Auger Bits • 36' and 32' Piling Leads • (13) PZ22, 25' Piling, PZ40 • (2) HP74 H-Piling • Assorted H-Piling Cutoffs • (8) 4'x20'x8" Oak Crane Mats (Good) • (5) Assorted Road Plate • Assorted Scaffolding, Pickboards, Jacks, Cross Braces • Large Assortment of Scaffolding Planks • **KENCO** Barrier Lifter • **UNITED STATES CRANE** Model 3-100, 1,000# Man Basket, s/n C26087. (Certified) • Man Basket • (2) 1-1/4 Wrecking Balls • 8' Multi-Paver • **JOHNSON** 20 Ton 3-Sheave Hook Block • **MILLER** 13 Ton Ball • **KOERING** Fairlead • (2) Weighted Hooks • 2-Sheave Hook Block • (3) Concrete Buckets • **ESCO** 36" Digging Bucket (Fits Gradall) • 16", 12", 18", 20" Assorted Buckets • **OWEN** 1 Yard Clamshell Bucket • (3) 34"x24" Load Test Beams • 20"x94" Galvanized Steel Corrugated Pipe • 13"x90" Galvanized Steel Corrugated Pipe • (2) 15"x32" Galvanized Steel Corrugated Pipe • Assorted Concrete Precast • Miscellaneous Rebar • Assorted Pallets of 3-Phase Electric Wire • 150 and 300 Gallon Poly Tanks • **DETROIT** V-12 Engine (Parts Only) • **(2) BOMAG** Walk-Behind Rollers (Parts Only) • Large Mechanical Shear • Large Assortment of Concrete, Penny, Common, Drywall and Scaffold Nails • Large Assortment of **RICHMOND** All Thread, 6"-39" Wall Ties, Cat Heads, Clamps, Wedge Bolts, Rebar Cabs • Large Assortment of Pulleys, Wedge Sockets, Lifting Lugs, Shackles, C-Clamps, Lifting Eyes, Anchor Bolts • Large Assortment of Chamfer Sticks (New)

ELECTRIC CONTRACTORS TOOLS

HOUGEN Magnetic Drill Tapered Chuck • **DIAMOND** Model DBD25X Electric Rebar Bender, s/n 103025, 110 volt electric motor, adjustable clamp • **RIDGID** K-400, 110 Volt Electric Sewer Snake • **BLACK & DECKER** 1/2" Angle Drill with case • **DEWALT, MILWAUKEE, BOSCH** and **PORTER CABLE** 7-1/4" Circular Saws • **(3) DEWALT** and **BLACK & DECKER** Jigsaws • **(2) MILWAUKEE** Screw Guns with case • **(14) HILTI, BOSCH, DEWALT, BLACK & DECKER, MILWAUKEE** 4-1/2" Angle Grinders • (2) Pneumatic Hoggrain Guns • (2) Fabric Brakes • Assorted **HILTI** Hammer Drill Bits and Core Bits • Electric Drills • **(3) BOSCH** Brute 1/2" Cordless Drills • **JAPSON** Cut-Off Saw • **BOSCH** Electric Chop Saw • **DEWALT** 3/4" Electric Drill with case • **DEWALT** 1/2" Hammer Drill with case • **(3) HITACHI** 1.5" Hammer Drills with case • **BOSCH** 11247 Hammer Drill with case • **(2) BOSCH** Bulldog 1/2" Hammer Drill with case • **(2) HILTI** TE2 1/2" Hammer Drill with case • **BOSCH** 11244 Hammer Drill with case • **(3) BLACK & DECKER** Portable Band Saws with case • **(2) DEWALT** Sawzalls • **MILWAUKEE** Sawzall • **DEWALT** Angle Grinder • **DEWALT** Circular Saw

CONCRETE CONVEYOR, MIXER, SAWS, TROWELS, AND EQUIPMENT

MORGEN Model MP56 Portable Concrete Placer Conveyor, s/n 14006, powered by Wisconsin 4 cylinder gas engine and hydraulic drive, equipped with 55"x18" conveyor, hopper, (2) 5' chutes, steering, and 33/12.50R16 tires. In good condition with good tires.



MORGEN MP56

BEST Model 655PM Portable Mortar Mixer, s/n 2421141, powered by Briggs & Stratton 7HP gas engine, equipped with single drum and 4.80-12 tires. In good condition with good tires.



SOFTCUT Model GS1000 Walk-Behind Concrete Saw, powered by Honda 6HP gas engine, equipped with 10" diamond blade. In very good condition.

BEST Model CS1 Walk-Behind Concrete Saw, s/n 3999053, powered by Honda 8HP gas engine, with water system. In good condition.

CONCRETE SAWS

TARGET 12" Masonry Chop Saw • **MINNICH** Pneumatic Dowel Pin Drill • **MASTER** F46H4 Concrete Power Trowel, Honda GXV270 gas • **WHITMAN** Concrete Power Trowel, 8HP Honda • **WHITMAN** Concrete Power Trowel, 11HP Honda • **MASTER** F46H Concrete Power Trowel, 11HP Honda • **(2) BEST** Concrete Power Trowels, 5HP Briggs & Stratton • **EMAK** Gas Powered Concrete Vibrator • (6) 110 Volt Electric Concrete Vibrators • (8) 110 Volt Electric Concrete Vibrators • Assorted High Cycle Concrete Vibrators • (8) Gas Powered High Cycle Power Unit, with Maginniss electric generator, 120 volt, 3-phase, 180 cycle, single cylinder gas Wisconsin engine • Concrete Chutes • 12' Aluminum Chute

SURVEY EQUIPMENT

TOPCON RL-H3C Rotating Laser • **TOPCON** DT-200 Digital Theodolite • **(2) HILTI** PR20 Rotating Lasers • **SOKKISHA 13T20** Transit • **SOKKISHA** DT6 Transit • **(2) TOPCON** HTG6 Auto Levels • **SOKKIA** C410 Auto Level • **LEITZ** B2A Auto Level • **TOPCON** DT104 Auto Level • **BERGER** Level • **WIZARD** LM30 Level • **NORTHWEST** KY2000 Level • **SNEIDER** TT700 Level • **GEOTEX** T22 Level • **(3) BUFFALO** Transit with cases • **KEUFFEL & ESSER** Transit • **(2) ASTRON** Transits • Grade Stake Sticks, Tripods

LAB AND TESTING EQUIPMENT

(3) New **FORNEY** Pressure Meters • (3) Used **FORNEY** Concrete Meters • **FORNEY** Manual Cylinder Press • **FORNEY** Par Splitter • **FORNEY** Slump Shaker • **FORNEY** Scale • **(8) FORNEY** Shaker Pans (New) • **FORNEY** Test Cylinder • **OHAUS** Triple Beam Scale (New) • (6) Shaker pans (New) • (5) Slump Cone Holders (new) • **HUMBOLDT** Test Equipment • **GIBSON** Model TS2 Testing Screen Shaker

GAS POWERED CONTRACTORS TOOLS



COMPACTORS



DEMO SAWS

SAKAI PC800 Walk-Behind Plate Compactor, Honda 5.5HP gas • **INGERSOLL-RAND** RX344H Foot Compactor, Honda 4HP gas • **SAKAI** RS65 Foot Compactor • **BEST** NAXT728R Gas Powered Foot Compactor • **SAKAI** RS65 Foot Compactor, Honda gas • **WACKER** BS60-2 Gas Powered Foot Compactor • **STONE** XT728R Foot Compactor, Robin EC12 gas • **STONE** XT728R Foot Compactor, Robin EC12 gas • **INGERSOLL-RAND** RX654H Foot Compactor Honda gas • **TORO** 622, 22" Walk-Behind Snow Blower, Teuschi gas • **STIHL** FS80 Weedwacker • **STIHL** HT75 Pole Saw • **HILTI** DSHS64-14 Demo Saw • **PARTNER** K700 Demo Saw, water spray • **MAKITA** DPC7311 Demo Saw, water spray • **STIHL** TS240 Demo Saw, water spray • **HUSQVARNA** L145, 18" Chain Saw • **STIHL** Wood Boss 20" Chain Saw • **STIHL** 036 Pro, 24" Chain Saw • **HOMELITE** 200, 14" Chain Saw • **(7) STONE, BEST** and **WACKER** Foot Compactors (Parts)

OFFICE FURNITURE & EQUIPMENT

(57) Chairs • (16) Tables • (42) Filing Cabinets • (11) Desks • (2) Refrigerators • (4) Cabinets • (6) Bookcases • (2) Couches • Conference Table • Safe • (2) Credenzas • Computer Table • (4) Drawing Cabinets • Drawing Rack • **OCE** 7050 Black Line Copier • **ROLL UP II** Redundant Grid (IF REAL ESTATE IS NOT SOLD, SOME OFFICE FURNITURE WILL BE RETAINED AND NOT SOLD)