

CRUSHING AND SCREENING EQUIPMENT AND TUB GRINDER



'95 Eagle 500 Impact Crusher



'01 Pegson 1100x650 Jaw



'05 Wildcat 516 Trommel

1995 EAGLE Model 500 Ultra Max Portable Impact Crusher, s/n 11103, powered by John Deere 6076AF130, diesel engine and Twin Disc PTO, equipped with model UM-05, horizontal shaft impactor with 33"x32" feed opening, 6'x13" feed hopper with grizzly, 30" discharge conveyor with Dings 24" belt magnet, 18" side discharge conveyor, mounted on tri-axle carrier, with (4) hydraulic stabilizers, and 11x22.5 tires. In good condition with good tires.

2001 PEGSON Model 1100x650 Premier Portable Jaw Crusher, s/n QM013944, powered by Cat 3306, 200HP diesel engine, equipped with 8'x16" vibratory grizzly feeder, 43"x25" jaw opening, 38" discharge conveyor with Eriez 29" belt magnet, mounted on tri-axle carrier, with 11R22.5 tires. In good condition with good tires. (New Jaw Dies & Side Plates)

2005 WILDCAT Model 516 Cougar Portable Trommel Screen, s/n 1W9S540135F351319, powered by John Deere 2.4L diesel engine and hydraulic drive, equipped with 5'x16" trommel screen with screen cleaners, 1/2" screen material (installed), 11'x6" feed hopper with 9'6" loading height, variable speed feed conveyor, 35" hydraulic folding fines discharge conveyor, 35-1/2" hydraulic folding overs discharge conveyor, mounted on single axle 5th wheel carrier with (4) hydraulic stabilizers and 235/75R17.5 tires. In good to very good condition with very good tires. (Additional 1" Screen Set-Not Installed)



'90 Powerscreen Chieftain



Thomas ProScreen 400



Norkot 9200 Maxi Grind



'92 Morbark 1000

1990 POWERSCREEN Model Chieftain Portable Screening Plant, s/n 5003852, powered by Cummins B3.9-P, 80HP diesel engine, equipped with 4'x8' 2-deck screen, 30" hydraulic folding rear discharge conveyor, (2) 23" folding side conveyors, fixed grizzly, mounted on tandem axle carrier. In good condition.

THOMAS Model Proscreen 400 Portable Screening Plant, s/n Unknown, powered by Kubota 3 cylinder diesel engine, equipped with 6'x7' single deck and pintle tow. In good condition.

NORKOT Model Maxi Grind 9200 Portable Asphalt Grinder, s/n 9200011, powered by Cummins 6BTA-5.9P, 177HP diesel engine and Detroit Allison PTO, equipped with 56" grinding drums with carbide teeth, feed hopper with variable speed belt, 1,000 gallon poly tank, mounted on tri-axle 5th wheel carrier and 7.50x16 tires. In good condition with good tires.

1992 MORBARK Model 1000 Single Axle Portable Tub Grinder, s/n 846-025, powered by Cummins LTA10-C, 307HP diesel engine, equipped with 10' tub opening, hydraulic folding 23" rear discharge conveyor, assorted screens, mounted on single axle carrier with pintle tow. In good condition with good tires.

30"x80" Hydraulic Radial Stacking Conveyor, equipped with 11.00x20 tires.

30"x60" Hydraulic Radial Stacking Conveyor, equipped with 11.00x20 tires.

Portable Jaw Crusher, s/n 5915B, equipped with approx. 40"x20" jaw crusher with twin bull wheels, 7'6"x10" feed hopper, and discharge conveyor structure, mounted on 5th wheel carrier. (No Motors Or Conveyor Belt) (Parts)

DREDGES, DIESEL PUMPS, AND WORK BOAT



Mudcat MC915 Dredge



(1) of (2) 8" x 6" Diesel Pumps

MUDCAT Model MC915 Cutter Head Dredge, s/n 41021, powered by Detroit 6-71 diesel engine, equipped with 9" cutter head, 15' cutting depth, 8" pump, foam filled pontoons, and 33'x9' deck. In fair condition.

MUDCAT Cutter Head Dredge, s/n 11020, powered by Detroit 6-71 diesel engine, equipped with 8" cutter head and 8'x24' deck. (Parts)

8"x6" Skid Mounted PTO Driven Pump, powered by John Deere Powertech 4.5L diesel engine. In good condition.

8"x6" Skid Mounted PTO Driven Pump, powered by John Deere 2.4L diesel engine. In good condition.

HALE 4" Skid Mounted Jet Pump, powered by Ford 6 cylinder diesel engine. In good condition.

1997 17' Fiberglass Center Console Work Boat, s/n EKHD2583D797, powered by Suzuki DT40 outboard, 40HP with oil injection. In fair condition.



1440 Cowpath Rd. • Hatfield, PA 19440 • 800-233-6898 • Fax: 215-361-9212

NOTICE: Albrecht & Heun, Inc has recently purchased all assets formerly owned and operated by Garden State Dredging, Inc. The owners of Albrecht & Heun have decided to liquidate those assets associated with the recycling and construction divisions. Additionally, we have accepted quality consignments from (4) financial institutions of off-lease and repossessed trucks and equipment. All items will sell at absolute auction, to the highest bidder, regardless of price!

LOCATION: The auction will be held at the A&H Mining & Recycling location, 496 Shunpike Road, Erma, New Jersey 08204 • **GPS Navigation:** Enter 600 Railroad Avenue, Erma, NJ

TERMS: Payment in full is required on sale day by cash, certified funds, or check with a bank letter of guarantee. Sample letter of guarantee: "We hereby guarantee the payment of our customer _____ written on his account up to \$ _____ dollars for purchases at your auction sale on June 25, 2009." All guaranteed checks should be made payable to Hunyady Auction Co. **Never A Buyer's Premium!**

FINANCING: Financing is available, please contact Susan at Hunyady Auction Company for complete details.

SALES TAX: According to Publication ANJ-3, the State of New Jersey considers this a casual sale and does not require the auction company to collect sales tax.

INSPECTION: Items will be available for inspection beginning Monday June 22 thru Wednesday June 24 from 8:00am until 5:00pm. Items may also be inspected sale day morning beginning at 7:00 a.m.

REMOVAL: After complete payment, all sale items may be removed on sale day as long as the removal activity is not disruptive to the sale and only until 5:00 p.m. Items may also be removed Friday, June 26, and Monday, June 29 thru Thursday, July 2, 2009 from 8:00 a.m. until 5:00 p.m. All items must be removed no later than Thursday, July 2, 2009 at 12:00 noon.

SALE SITE DIRECTIONS: FROM PHILADELPHIA AREA AND POINTS WEST: Once in New Jersey, proceed to Route 55 South. Follow Route 55 to the end, this becomes Route 47 South. Continue on Route 47 South approximately (3) miles and veer left onto Route 347 (this will by-pass several towns) Follow Route 347 to the end and turn left to continue back onto Route 47 South. Proceed approximately (18) miles into the town of Rio Grande. Turn right onto Railroad Avenue (Route 626 South) and continue (0.6) miles to sale site on right.

FROM GARDEN STATE PARKWAY SOUTHBOUND: Follow Garden State Parkway South to Exit #4A and proceed to Route 47 North. Follow (0.8) miles and turn left onto Railroad Avenue, continue (0.6) miles to sale site on right.

AIRPORT INFORMATION: COMMERCIAL SERVICE: This area is serviced commercially through Philadelphia International Airport and Atlantic City International Airport. Rental cars are available at both locations. **PRIVATE AVIATION:** Cap May County Airport (KWWD) (609) 886-8865 is located approximately (2.0) miles from the sale site. Rental cars are available through Ace Sharper Rentals (609) 889-7722. Shuttle service to and from the sale site is also available through Ace Sharper.

MOTEL INFORMATION: The closest hotels to the sale site are located in Rio Grande, however they are motels with very limited number of rooms: Off Shore Motel (609) 886-6400 • Country Motel (609) 886-1345. The nearest chain hotels are located in Millville or Vineland, New Jersey approximately (45) minutes away.

SALE SITE PHONE: (215) 361-9099 • SALE SITE FAX: (215) 361-9212

UTILITY TRUCKS, STEP VAN, PICKUP TRUCK, AND MINI VAN

1994 FORD Model F-450 Super Duty Utility Truck, diesel engine and 5 speed transmission, Reading 11' utility body, gas powered air compressor, dual rear wheels, air conditioning, and LT235/85R16 tires. In fair to good condition with good tires.

1986 CHEVROLET Model 3500 Utility Truck, V-8 gas engine and 4 speed transmission, 10' open utility body, 6,000# service crane, hydraulic air compressor, PTO, dual rear wheels, and 7.50R16 tires. In fair to good condition with fair tires.

1979 CHEVROLET Step Van, V-8 gas engine and automatic transmission, 16' aluminum body, dual rear wheels, and 7.50X16LT tires. In fair condition with fair tires.

2000 CHEVROLET Model 2500LS, 4x4 Pickup Truck, Vortec 6.0L, V-8 gas engine and automatic transmission, 8' bed, alloy wheels, air conditioning, cruise control, power windows and locks, and 245/75R16 tires. In fair to good condition with good tires.

1995 OLDSMOBILE Mini Van, air conditioning, cruise control, leather interior. In fair to good condition.

CONCRETE TRAILER, MORTAR MIXER, AND CURB MACHINE

Tandem Axle Tag-A-Long Concrete Trailer, 12' deck, 275 gallon water tank, and Stone 755PM mortar mixer, 8HP gas engine. In good condition.

Gas Powered Tow Behind Mortar Mixer

Asphalt Curb Machine, gas engine

STRAW BLOWER, AIR COMPRESSOR, LIGHT PLANT, AND ARROWBOARD

PATZ Portable Straw Blower, s/n 9427-1532-0800, Kohler V-twin 18HP gas engine, mounted on tandem axle tag-a-long trailer.

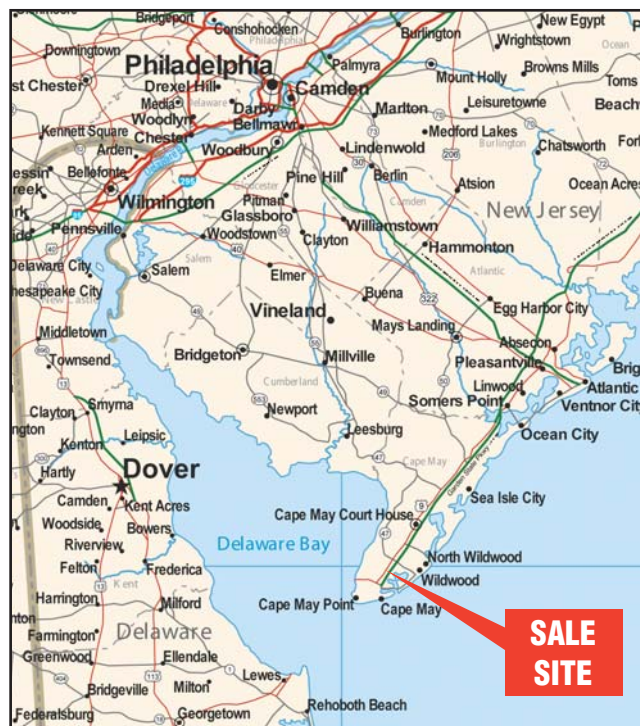
SULLAIR 185CFM Portable Air Compressor, s/n 103550/251445

Portable Light Plant, diesel engine. (Lights Only)

Portable Arrowboard, Lombardini diesel engine. In good condition. (Meter Reads 1,402 Hours)

CONTRACTORS EQUIPMENT AND TOOLS

CLIPPER Walk Behind Concrete Saw, Wisconsin 37HP • **WACKER Reversing Plate Compactor**, gas • **WACKER BS60Y Foot Compactor** • **INGERSOLL-RAND Foot Compactor** • **WACKER Foot Compactor** • **CLIPPER Block saw**, 5HP electric, 230V, diamond blade • **CLARK Walk Behind Vacuum**, Briggs & Stratton gas • 5HP Walk Behind Roto-Tiller • **HONDA EW171**, 170 Amp Welder/Generator, Honda gas • **HONDA 8000 Watt Generator**, 120/240, 13HP • 4000 Watt Gas Powered Generator • **MULTIQUIP 3" Diaphragm Pump**, 6.5HP • 3" Trash Pump, 6.5HP • 3" Diaphragm Pump (Parts) • **WEATHER GUARD 100 Gallon Bed Mount Fuel Tank** • 105 Gallon Step Fuel Tank • 50 Gallon Fuel Tank • 20HP Electric Motor, 1,190 RPM, 256T frame (Spare For Crusher)



ABSOLUTE AUCTION
Acquisition Liquidation



'01 PEGSON JAW CRUSHER WITH THOMAS SCREEN

Albrecht and Heun, Inc.
THURSDAY, JUNE 25, 2009 - 9:00 AM
Erma, New Jersey (Cape May Area)



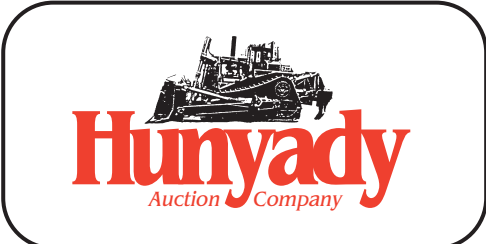
'95 EAGLE 500 IMPACT CRUSHER



(2) OF (6) ROLL-OFF TRUCKS



'05 KOMATSU D61PX-15



1440 COWPATH RD. • HATFIELD, PA 19440
215/361-9099 • Fax: 215/361-9212



PRE-SORTED
FIRST CLASS MAIL
US POSTAGE
PAID
HAVERTOWN, PA
PERMIT #45

CRAWLER TRACTORS AND CRAWLER LOADERS

2005 KOMATSU Model D61PX-15 Crawler Tractor, s/n B40072, powered by Komatsu diesel engine and powershift transmission, equipped with 6-way straight blade, Galeo package, enclosed ROPS cab with sweeps and air conditioning, drawbar, and 34" SBG pads. In good to very good condition with very good undercarriage.



'05 Komatsu D61PX-15



1998 JOHN DEERE Model 450G LGP Crawler Tractor, s/n 845930, powered by John Deere diesel engine and powershift transmission, equipped with 6-way blade, ROPS canopy, and 24" DBG pads. In good condition with fair undercarriage.

'98 John Deere 450G LGP

CATERPILLAR Model D8H Crawler Tractor, s/n 46A1478, powered by Cat pony start diesel engine and powershift transmission, equipped with semi-U blade with tilt, drawbar, ROPS canopy with sweeps, and 24" SBG pads. In fair condition with fair undercarriage.

1999 CATERPILLAR Model 963C Crawler Loader, s/n 2DS00707, powered by Cat 3116 diesel engine and hydrostatic transmission, equipped with general purpose loader bucket with teeth and segments, enclosed ROPS cab with air conditioning, and 22" DBG pads. In good condition with fair to poor undercarriage.



'99 Cat 963C



1989 CATERPILLAR Model 953 LGP Crawler Loader, s/n 20Z03218, powered by Cat 3204 diesel engine and powershift transmission, equipped with general purpose loader bucket with teeth and segments, enclosed ROPS cab, and 20" DBG pads. In good condition with fair to good undercarriage.

'89 Cat 953

CATERPILLAR Model 953 LGP Crawler Loader, s/n 20Z00335, powered by Cat diesel engine and hydrostatic transmission, equipped with general purpose loader bucket, multi-shank ripper, and enclosed ROPS cab. In good condition with fair undercarriage.

1986 CASE Model 455C Crawler Loader, s/n 3080652, powered by Case diesel engine and hi-lo reversing transmission, equipped with ROPS canopy with sweeps and 14" TGB pads. In poor to fair condition.

KOMATSU Model D66S-1 Crawler Loader, s/n 01134, powered by International diesel engine and hydrostatic transmission, equipped with 10' 9-tine root rake and enclosed ROPS cab. In poor to fair condition with fair undercarriage.

HYDRAULIC EXCAVATORS AND ATTACHMENTS



'04 John Deere 200C LC

2004 JOHN DEERE Model 200C LC Hydraulic Excavator, s/n FF200CX504556, powered by John Deere Powertech 504556 diesel engine and hydraulic drive, equipped with 9'8" dipper stick, Geith hydraulic quick coupler, 42" bucket, air conditioning, 14'6" crawler, and 31.5" TGB pads. In good condition with good undercarriage.

1996 CATERPILLAR Model 312 Hydraulic Excavator, s/n 7DK06465, powered by Cat 3064 diesel engine and hydraulic drive, equipped with 8' dipper stick, 36" digging bucket, and 11'8" crawlers, and 28" TGB pads. In good condition with fair to good undercarriage.

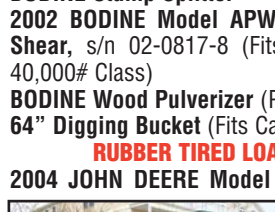
HYDRAULIC EXCAVATORS AND ATTACHMENTS (CONT.)

1998 KOMATSU Model PC220 LC-6LE Hydraulic Excavator, s/n A83419, powered by Komatsu diesel engine and hydraulic drive, equipped with 10' dipper stick, JRB hydraulic quick coupler, 42" digging bucket, 15' crawlers, and 31.5" TGB pads. In fair to good condition with fair to good undercarriage.



'98 Komatsu PC220LC-6

2004 BODINE Model APCP-215 Concrete Pulverizer, s/n 04-0325-16 (Fits Cat 318/320, 35-40,000# Class)



'04 Bodine Concrete Pulverizer

BODINE Stump Splitter
2002 BODINE Model APWP-210 Wood Pulverizer Shear, s/n 02-0817-8 (Fits Cat 311/312/313, 35-40,000# Class)

BODINE Wood Pulverizer (Parts)
64" Digging Bucket (Fits Case Excavator)

2004 JOHN DEERE Model 544J Rubber Tired Loader, s/n DW544JZ590483, powered by John Deere Powertech 6.5L diesel engine and powershift transmission, equipped with JRB 2.5 cubic yard general purpose loader bucket, quick coupler with 3rd valve, front hydraulics, air conditioning, and 20.5R25 tires. In good condition with fair to good tires.



'04 John Deere 544J

JD 544J Attachments: Fork Attachment • Hydraulic Side Dump Bucket

2001 JOHN DEERE Model 644H Rubber Tired Loader, s/n 578857, powered by John Deere diesel engine and powershift transmission, equipped with JRB general purpose loader bucket with teeth, hydraulic quick coupler, enclosed ROPS cab with air conditioning, and 23.5-25 tires. In good condition with good tires.



'01 John Deere 644H

1999 JOHN DEERE Model 310SE, 4x4 Tractor Loader Extend-A-Hoe, s/n T0310SE877595, powered by John Deere diesel engine and shuttle transmission, equipped with JRB general purpose loader bucket, 30" digging bucket, hydraulic quick coupler, ride control, enclosed ROPS cab, and 12.5/80R18 front and 19.5Lx24 rear tires. In good condition with good tires.



'99 John Deere 310SE 4x4 Extend-A-Hoe

MOTOR GRADER AND COMPACTORS

GALION Model 118 Series C Motor Grader, s/n 11323, powered by Cummins diesel engine and direct drive transmission, equipped with 13' all hydraulic moldboard, scarifier, and 14.00x24 tires. In good condition with good tires.



Galion 118 Series C

RAYGO Model Rascal Vibratory Compactor, s/n 21C0112, powered by Detroit 3-53 diesel engine and hydrostatic transmission, equipped with 84" smooth drum, drum drive, and 23.1x26 tires. In fair to good condition with fair to good tires.



Raygo Rascal

2004 BOMAG Model BMP851 Trench Compactor, s/n 101720041370, powered by Hatz diesel engine, equipped with 33" padfoot drums and wired remote. In good to very good condition.

MIKASA Model 15A Articulated Vibratory Trench Compactor, s/n T1056, powered by Isuzu diesel engine, equipped with 36" padfoot drum. In fair to good condition.



'04 Bomag BMP851

MINI EXCAVATOR, SKID STEER LOADER, AND ATTACHMENTS

2004 KUBOTA Model KX121-3 Mini Excavator, s/n 21737, powered by Kubota 2.2L 49HP diesel engine and hydraulic drive, equipped with 5'3" dipper stick with hydraulic beyond, 5'7" backfill blade with power angle, cab with air conditioning, and 14" rubber tracks. In fair to good condition with poor undercarriage. (No Bucket)



'04 Kubota KX121-3

2002 BOBCAT Model S-185 Turbo Skid Steer Loader, s/n 519028882, powered by Kubota diesel engine and hydrostatic transmission, equipped with 66" general purpose bucket, auxiliary hydraulics, ROPS canopy, and 10x16.5NHS tires. In good condition with very good tires.



'02 Bobcat S-185

1988 CASE Model 1845C Skid Steer Loader, s/n JAF0016860, powered by Case diesel engine and hydrostatic transmission, equipped with 72" general purpose bucket, 48" fork attachment, auxiliary hydraulics, ROPS canopy, and 12x16.5 NHS tires. In good condition with good tires.



'88 Case 1845C

BRADCO Model 617 Trencher Attachment, equipped with 4' trencher bar. In good condition.
BOBCAT Hydraulic Hammer. In good condition.
THOMAS Model PA40 Hydraulic Post Hole Digger, 9" bit
Grapple Bucket • Hopper Broom

BLAW KNOX Model PF400 Crawler Paver, s/n 0947020, powered by John Deere diesel engine and hydrostatic transmission, equipped with 8'-13" heated vibratory screed, dual operator station, and 13" rubber pads. In good condition with fair to good undercarriage.

ASPHALT ZIPPER Cold Planer Attachment, powered by John Deere diesel engine, equipped with 32" milling drum, bucket lip mount, and single axle transport trailer. In good condition.



Asphalt Zipper Milling Attachment

2006 DYNAPAC Model CC1000 Tandem Vibratory Roller, s/n 90130845, powered by Perkins diesel engine and hydrostatic transmission, equipped with 39" smooth drums, spray system, and roll-bar. In good condition.



'06 Dynapac CC1000

BOMAG Model BW90T Tandem Roller, s/n 37318, powered by diesel engine and hydrostatic transmission, equipped with 33" drums. In fair to good condition.

FORKLIFTS, UTILITY AND BROOM TRACTORS, AND ATTACHMENTS
JCB Model 525B, 5,500# Telescopic Forklift, s/n 525B-4/272867, powered by diesel engine and shuttle transmission, equipped with 48" forks, 15' reach, 25' height, and 15.5x25 front and 14x17.5 rear tires. In fair condition with fair tires.

CLARK Model C500H35LPG, 3,000# Solid Tired Forklift, s/n H30-86-2510LPG, powered by propane gas engine and shuttle transmission, equipped with 48" forks, power side shift, 130" 2-stage mast, and FOPS canopy. In fair to good condition.

FORD Model 2110 Utility Tractor, s/n Unknown, powered by gas engine and direct drive transmission, equipped with 6' sickle bar, 3-point hitch, PTO, roll bar, and 8.00x16 front and 8.3x24 dual rear tires. In good condition with fair to good tires.

FORD Utility Tractor, powered by Ford 4 cylinder gas engine and direct drive transmission, equipped with 3-point hitch, PTO, and 6.00x16 front and 14.9x28 rear tires. In good condition with good tires.

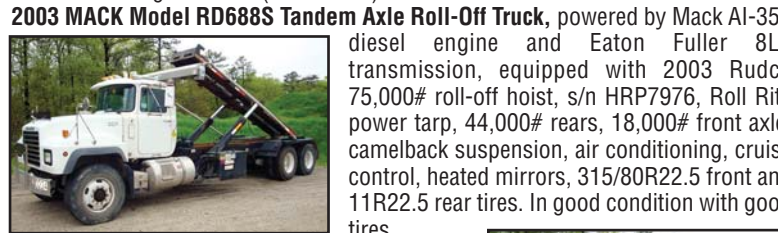
FORD Broom Tractor, s/n C298919, powered by diesel engine and direct drive transmission, equipped with 8' hydraulic broom, power angle, and 200 gallon poly water tank. In fair to good condition.

LILY Model 300 Rotary Spreader, s/n 0501-2229, equipped with 3-point hitch, PTO powered. In good to very good condition.

Sprayer, equipped with 6' spray bars, 60 gallon poly tank, and 3-point hitch.

ROLL-OFF TRUCKS AND DUMPSTER CONTAINERS

2004 MACK Model CV-713 Tandem Axle Roll-Off Truck, powered by Mack AI-400, 400HP diesel engine and Eaton Fuller 8LL transmission, equipped with 2003 American model ARU-75-22-XT, 75,000# cap. roll-off hoist, s/n RL4079, with 22" rail, spring suspension, 2-stage engine brake, double frame, 264" wheelbase, aluminum front wheels, air ride cab, dual 55 gallon aluminum fuel tanks, air conditioning, 385/65R22.5 front and 11R22.5 rear tires. In good condition with good tires. (Bad Clutch)



'03 Mack RD688S Roll-Off

2002 MACK Model RD688S Tandem Axle Roll-Off Truck, powered by Mack E7-350 diesel engine and Eaton Fuller 8LL transmission, equipped with 2001 Rudco model 6070R, 60,000# roll-off hoist, s/n HRP623, power tarp, 44,000# rears, 18,000# front axle, air conditioning, cruise control, heated mirrors, 11R22.5 front and 11R24.5 rear tires. In good condition with good tires.



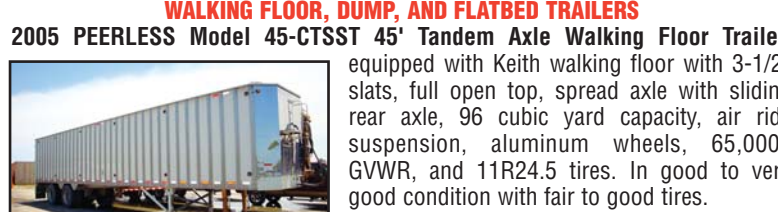
'02 Mack RD688S Roll-Off

2001 PETERBILT Model 357 Tandem Axle Roll-Off Truck, powered by Cat C-15, 475HP diesel engine and Eaton Fuller RT016908LL transmission, equipped with 2001 American model AR0-75-22-XT, 75,000# roll-off hoist, s/n J13134, with 22" rail, 18,000# front and 46,000# rear axles, spring walking beam suspension, 3-stage engine brake, double frame, 276" wheelbase, aluminum front wheels, cruise control, air conditioning, 315/80R22.5 front and 11R24.5 rear tires. In good condition with poor to fair tires.



'90 Ford L9000 Roll-Off

1978 MACK Model RD686S Tri-Axle Roll-Off Truck, powered by Mack 283HP diesel engine and 6 speed lo-hole transmission, equipped with 3-stage engine brake, 276" wheelbase, aluminum front wheels, cruise control, air conditioning, 315/80R22.5 front and 11R24.5 rear tires. In good condition with good tires.



'05 Peerless 45' Walking Floor

2006 MONTONE Model MD34666666 Magna 34' Tri-Axle Demolition Dump Trailer, equipped with 34' steel dump body with 66" sides and swing gate, 49.5 cubic yard capacity, airlift axle, ABS braking system, Hendrickson air ride suspension, 80,000# GVWR, and 11R24.5 tires. In good to very good condition with fair to good tires.



'06 Montone 34' Demolition Dump

FLORIG 30' Steel Dump Demo Trailer • 26' Tandem Axle Dump Trailer • FRUEHAUF 35' Tandem Axle Flatbed Trailer

DUMP TRUCKS



'98 and '96 Mack RD688S

1998 MACK Model RD688S Tri-Axle Dump Truck, powered by Mack E7-350 diesel engine and Eaton Fuller 8LL transmission, equipped with 16' steel dump body with air gate and power tarp, 2-stage engine brake, camelback suspension, air conditioning, and 425/65R22.5 front, 10R22.5 lift axle, and 11R24.5 rear tires. In good condition with good tires.

1996 MACK Model RD688S Tri-Axle Dump Truck, powered by Mack E7-350 diesel engine and Eaton Fuller 8LL transmission, equipped with Godwin 17'6" steel dump body with 2-way gate, air gate and power tarp, 44,000# rears, 18,000# front axle, 20,000# lift axle, 2-stage engine brake, camelback suspension, air conditioning, heated mirrors, and 315/80R22.5 front, 385/65R22.5 lift axle, and 11R24.5 rear tires. In good condition with good tires. (New Body)



'88 Ford L8000

1995 GMC Model Autocar ACL64 Tandem Axle Dump Truck, powered by Cat 3306C diesel engine and Eaton Fuller 8 speed transmission, equipped with 15.6" steel dump body with air gate and power tarp, 210" wheelbase, spring suspension, Jake brake, tow package with air, aluminum wheels, air conditioning, AM/FM stereo, and 11R22.5 tires. In good condition with good tires.

1989 FORD Model L8000 Tandem Axle Dump Truck, powered by Ford 7.8L, 240HP diesel engine and Roadranger RT7608LL transmission, equipped with 16' steel dump body, 40,000# rears, 16,000# front axle, tow package with electric, air conditioning, and 11R22.5 tires. In fair to good condition with good tires.

1973 DIAMOND RIO Tri-Axle Dump Truck, powered by Cummins 6 cylinder diesel engine and Spicer P8516, 16 speed transmission, equipped with 16' aluminum dump body and 10R22.5 tires. In fair to good condition with fair tires.



Mack DM685S and Ford L8000 Tandems

MACK Model DM685S Tandem Axle Dump Truck, powered by Mack EM6-285 diesel engine and 6 speed lo-hole transmission, equipped with 14'6" steel dump body, camelback suspension, tow package with air, and 11R24.5 tires. In fair to good condition with good tires.

MACK Model DM686SX Tandem Axle Dump Truck, powered by Mack diesel engine and 6 speed lo-hole transmission, equipped with 18' steel dump body with swing gate and 11.00x24 tires. In fair condition with good tires.

TRUCK TRACTORS AND LOWBOY TRAILERS



'91 Mack CH613 with Florig Dump

1991 MACK Model CH613 Tandem Axle Truck Tractor, powered by Mack EM7-300 diesel engine and Eaton Fuller 7 speed transmission, equipped with wetline, single frame, airslide 5th wheel, spring suspension, dual fuel tanks, air conditioning, cruise control, and 11R22.5 tires. In good condition with good tires.

1990 MACK Model RW613 Superliner Tandem Axle Truck Tractor, powered by Mack 350 diesel engine and Maxitorque T2090, 9 speed transmission, equipped with wetline, single frame, 2-stage engine brake, camelback suspension, air ride cab, front aluminum wheels, air conditioning, heated mirrors, and 11R22.5 tires. In good condition with good tires. (Out Of Frame Engine Rebuild-Approx. 100 Hours)



'90 Mack RW613 Superliner

2005 FONTAINE Model TL55FLD, 55 Ton Tri-Axle Lowboy Trailer, equipped with non-ground bearing hydraulic detachable gooseneck, 25'x8'6" load deck, 13'6" open over wheels, 4th axle prepped, Hendrickson air ride suspension, outriggers, chain dogs, and 275/70R22.5 tiers. In good condition with good tires.



'05 Fontaine 55 Ton



Witzco 35 Ton

1999 WITZCO Model RG35, 35 Ton Tandem Axle Lowboy Trailer, equipped with ground bearing, hydraulic detachable, 22'6"x8'6" load deck, and 8'6" open over wheels. In good condition with good tires.

FUEL/LUBE AND BUCKET TRUCKS, AND TREE SPADE

1991 FORD Model L8000 Single Axle Fuel/Lube Truck, powered by Ford 7.8L diesel engine and 6 speed transmission, equipped with approx. 1,000 gallon fuel tank, (4) product tanks with pneumatic pumps, (1) waste tank, hose reels, gas powered air compressor, 33,200# GVWR, and 11R22.5 tires. In good condition with good tires.



'91 Ford L8000 Fuel-Lube

1995 FORD Model F-450 Super Duty Bucket Truck, powered by V-8 gas engine and automatic transmission, equipped with Telsta 28' aerial lift, 300# single basket, Reading utility body, gas powered hydraulic system, dual rear wheels, and 235/85R16 tires. In fair to good condition with good tires.

1989 VERMEER Model TS44T Tree Spade, s/n 1VRC161P7K1004438, powered by hydraulic drive, mounted on Ford F-350 truck. In good condition. (Truck Fair)