

CRAWLER TRACTORS AND ATTACHMENTS



Cat D8L



Cat D9H



Cat D8K

1993 CATERPILLAR Model D5H LGP Series II Crawler Tractor, s/n 1DD05734, Cat 3304 diesel engine and powershift transmission, 6-way straight blade, drawbar, ROPS over enclosed cab with heat and air conditioning, and 34" SBG pads. In good condition with good undercarriage.
1985 CATERPILLAR Model D3B Crawler Tractor, s/n 27Y03186, Cat 3204 diesel engine and powershift transmission, 6-way straight blade, tow hitch, ROPS canopy, and 16" SBG pads. In good condition with good undercarriage.
D8K Attachments: BALDERSON Coal Blade • (3) Semi-U Blades • (2) U Blades • FLECO 12'7" Root Rake • HYSTER HRL Hydraulic Winch • **Miscellaneous Attachments:** CARCO J120 Hydraulic Winch • Counterweight (Cat D8)



'99 Cat D5M LGP



'93 Cat D5H LGP II



'85 Cat D3B

CATERPILLAR Model D8L Crawler Tractor, s/n 53Y01760, Cat 3208 diesel engine and powershift transmission, U blade with tilt, 4-barrel single shank ripper, s/n 88N0111, with hydraulic pin puller, 3rd valve, ROPS over enclosed cab with heat, light package, and 24" SBG pads. In good condition with very good undercarriage.
CATERPILLAR Model D9H Crawler Tractor, s/n 90V01298, Cat D353E diesel engine and powershift transmission, U blade with tilt, Cat 2-barrel single shank ripper, s/n 50G200, 3rd valve, enclosed ROPS cab with heat and air conditioning, light package, and 27" SBG pads. In good condition with good undercarriage.
CATERPILLAR Model D8K Crawler Tractor, s/n 77V03884, Cat D342 diesel engine and powershift transmission, U blade with tilt, Cat 4-barrel single shank ripper, s/n 92M2839, 3rd valve, enclosed ROPS cab with heat and air conditioning, light package, and 24" SBG pads. In good condition with good undercarriage.
CATERPILLAR Model D8K Crawler Tractor, s/n 77V02348, Cat D342 (Spacer plate) diesel engine and powershift transmission, U blade with tilt, 4-barrel single shank ripper, s/n 92M1860, 3rd valve, enclosed ROPS cab with heat, and 24" SBG pads. In good condition with good undercarriage.
CATERPILLAR Model D8H Crawler Tractor, s/n 46A2727, Cat D342 diesel engine with gas pony motor and powershift transmission, cable controlled push blade, drawbar, open ROPS canopy, and 22" SBG pads. (Parts Only)
1999 CATERPILLAR Model D5M LGP Crawler Tractor, s/n 3CR01028, Cat 3116 diesel engine and powershift transmission, 6-way straight blade, drawbar, fingertip controls, enclosed ROPS cab with heat and air conditioning, and 30" SBG pads. In good condition with fair to good undercarriage.

HYDRAULIC EXCAVATORS AND ATTACHMENTS



'99 Cat 345BL

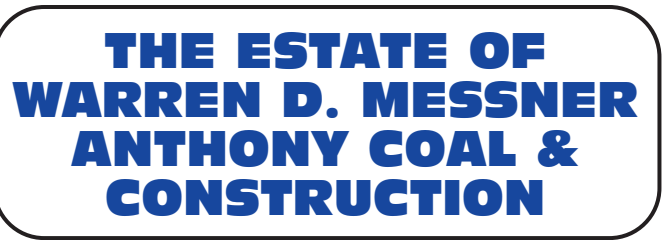
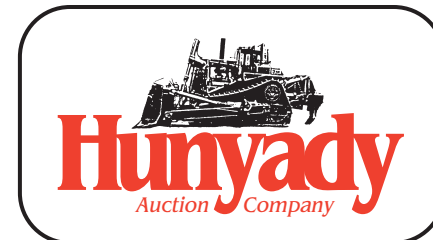


'96 Cat 320L

1999 CATERPILLAR Model 345BL Hydraulic Excavator, s/n 4SS01473, Cat 3176 diesel engine and hydraulic drive, 11' dipper stick, Cat 60" digging bucket, hydraulic quick disconnect, hydraulic beyond, 17'9" crawlers, and 35.5" TBG pads. In good condition with good undercarriage.
1996 CATERPILLAR Model 320L Hydraulic Excavator, s/n 9KK05465, Cat 3066 diesel engine and hydraulic drive, 9'4" dipper stick, Balderson 44" digging bucket, JRB hydraulic quick disconnect, thumb bracket, heat and air conditioning, 14'8" crawlers, and 31.5" TBG pads. In good condition with good undercarriage.
1988 CATERPILLAR Model EL300 Hydraulic Excavator, s/n 4NF00331, Cat 3306 diesel engine and hydraulic drive, 9'8" dipper stick, 32" digging bucket, thumb bracket, 16" crawlers, and 32" TBG pads. In good condition with good undercarriage.
1985 CATERPILLAR Model 225 Hydraulic Excavator, s/n 51U06022, Cat 3208 diesel engine and hydraulic drive, 8' dipper stick, 44" digging bucket, enclosed cab with heat, 14'8" crawlers, and 30" TBG pads. In good condition with good to very good undercarriage.
CATERPILLAR Model 225 Hydraulic Excavator, s/n 51U02686, Cat 3208 diesel engine and hydraulic drive, 8' dipper stick, 28" digging bucket with ripper pockets, enclosed cab with heat, 14'8" crawlers, and 30" TBG pads. In good condition with very good undercarriage.
Cat 345: ALLIED Hydraulic Demolition Hammer • 48" Digging Bucket
Cat 320: Rockland 5-Tine Grapple • Cat 320 Buckets: 40" Digging • 30" Digging • 24" Digging • 72" Cleanup • 66" Cleanup
Cat EL300: LaBounty 5-Tine Grapple • Digging Buckets: 58" side cutters • 48" with side cutters • (2) 42"



Cat 225



1440 Cowpath Rd. • Hatfield, PA 19440 • 800-233-6898 • Fax: 215-361-9212

NOTICE: Due to the untimely death of Mr. Warren D. Messner, Ms. Beverly Stack, executrix, has ordered that assets of Anthony Coal & Construction be sold at absolute auction. The majority of the assets are owned by the estate with a few consignments taken from local contractors. *Everything in the auction will sell to the highest bidder regardless of price!*
AUCTIONEER'S NOTE: Warren Messner was a long-time customer and friend to us and we are honored to be conducting this auction. Please join us and the Messner Family for this nice spring auction of well maintained equipment and trucks.
LOCATION: The auction will be held at Anthony Coal's shop/yard facility in the Imperial Industrial Park on Bateman Road/Route 978 in Imperial, Pennsylvania 15126.
TERMS: Payment in full is required on sale day by cash, certified funds, or check with a bank letter of guarantee. Sample letter of guarantee: "We hereby guarantee the payment of our customer _____ written on his account up to \$____ dollars for purchases at your auction sale on June 11, 2009." All guaranteed checks should be made payable to Hunyady Auction Co. *Never A Buyer's Premium!*
FINANCING: Financing is available, please contact Susan at Hunyady Auction Company for complete details.
SALES TAX: The Commonwealth of Pennsylvania considers this an isolated sale and does not require the auction company to collect sales tax.
INSPECTION: Items will be available for inspection one week prior to the auction from 8:00 a.m. until 5:00 p.m., with the exception of Saturday and Sunday, June 6 and 7 at which time the site will be closed. Items may also be inspected sale day morning from 7:00 a.m. until 9:00 a.m.
REMOVAL: After complete payment, all sale items may be removed on sale day as long as the removal activity is not disruptive to the sale and only until 5:00 p.m. Items may also be removed Friday, June 12, and Monday, June 15 thru Thursday, June 18, 2009 from 8:00 a.m. until 5:00 p.m. All items must be removed no later than Thursday, June 18, 2009 at 5:00 p.m.
SALE SITE DIRECTIONS: FROM THE PITTSBURGH PARKWAY (Routes 22/30 West): Exit at "Routes 22/30 West/Weirton" and continue on Routes 22/30 West (3.9) miles to the West 30/South 978 Imperial Exit. At stop sign at end of ramp turn left onto Route 978 South and proceed (0.4) miles and turn left into the Imperial Industrial Park. Continue to sale site at top of hill.
AIRPORT INFORMATION: This area is serviced commercially and privately through Pittsburgh International Airport. Rental cars are available.
MOTEL INFORMATION: Holiday Inn Express Campbell's Run Road (412) 788-8400 • Comfort Inn Toni Dale (412) 787-2600 • Marriott Pittsburgh Airport (888) 777-5340
PA AUCTION LICENSE NO: AY000281

SALE SITE PHONE: (724) 695-3711 • SALE SITE FAX: (724) 695-7380

SHOP & CONTRACTORS TOOLS

EMGLO NK100-2, 200 Gallon Horizontal Shop Air Compressor, 25HP 3-phase electric motor, 94 CFM/125 PSI and Champion air drying unit. In good condition. • (2) Hydraulic Driven Air Compressors • **COLLCRIMP** T-400 Hose Crimping Machine with collets • (2) Electric Chop Saws • **ATLAS** 36" Engine Lathe • **REZTOR** OH190, 186,000 BTU Oil Heater • (2) **REFLECT-O-RAY** 105,000 BTU Gas Heaters • Electric Heaters • **CAROLINA** HD10 Horizontal Band Saw • **BLACK & DECKER** Magnetic Drill Press • **TRANTER** 1150 Multi-Speed Drill Press • Hydraulic Bottle Jacks & Hydraulic Porta Powers • (2) Pneumatic Bumper Jacks • 1" and 3/4" Pneumatic Impact Wrenches • **SPLINE** Drive Pneumatic Impact Wrench • Pneumatic Belt Sander & Grinders • Dual Wheel Pedestal Grinder • **LINCOLN** R3R-30, 300 Amp Electric Arc Welder • **LINCOLN** Ideal Arc 250, 250 Amp Electric Arc Welder • Welding Rod Oven, Welding Rod & Wire • (2) Pedestal Cranes with 18' trolley beams and Yale 2 ton electric chain hoists • **RITTER** Hydraulic Pressure Test Machine • **HITACHI** C10FS Compound Mitre Saw • Track Torch • Pneumatic Lubers • Barrel Pumps • P&G 24WB Portable Sandblast Pot • (10) Manual Chain Hoists • Large Quantity of Bolt Bins & Parts Tray Cabinets • Chain Binders • Extension Cords • Assorted Rigging • Chains & Binders • Assorted Lubricants • Pipe Wrenches • C Clamps • Work Benches • Metal Racking • Knock Wrenches • Stretchers & First Aid Kits • Gurneys • (2) Pneumatic Rock Drills • **MARLOW** 3" Centrifugal Pump • (2) **RIDGID** Tri-Stands • (9) 55 Gallon Drums Concrete Sealer • Safety & Silt Fence • Fence Post Clips

MISCELLANEOUS

Shopmade Portable Trench Blower • Portable Trench Blower, Cat 3306PC • Manitowoc 4600 Carbody-House w/Butt Section Boom • **ESCO** 7 Yard Drag Bucket • Motorola Two-Way Radio System; includes all vehicle units, base station and port light tower antenna unassembled, fair/rough appearance • **GLEDHILL** 10' Hydraulic Angle Snow Plow • 14' Wood Flatbed • (2) **AUTOCRANE** Model 5005H Service Booms • (2) Barrier Lifters • 3-Sheave Hook Block • 22' Steel Flatbed Dump Body with stake pockets • 10,000 Gallon Skid Mounted Fuel Storage Tank • Approx. 6,000 Gallon Skid Mounted Water Storage Tank • 3-Section Fertilizer Storage Bin with (3) manual gates and super-structure • (2) Approx. 3,000 Gallon Skid Mounted Fuel Storage Tanks • Approx. 1,500 Gallon Skid Mounted Fuel Storage Tank with 120 volt electric pump • (2) UNUSED 4x6' Lighted Sign Board Enclosures • NEW & Used Street Lights • Inside Lighting • (5) 250 Gallon Poly/Stainless Containers • Desk, Chairs, File Cabinets & Office Partitions



ABSOLUTE AUCTION

The Estate of Warren D. Messner Anthony Coal & Construction

CAT D9H & D8K'S

THURSDAY, JUNE 11, 2009 - 9:00 AM

Imperial, PA (Pittsburgh Area)



CAT 988B



'92 KW T800 & '04 TALBERT 51 TON



CAT 815B & 825B



1440 COWPATH RD. • HATFIELD, PA 19440
215/361-9099 • Fax: 215/361-9212



PRE-SORTED
FIRST CLASS MAIL
US POSTAGE
PAID
HAVERTOWN, PA
PERMIT #45

ARTICULATED END DUMPS



(2) '03 Cat 740

2003 CATERPILLAR Model 740, 40 Ton 6x6 Articulated End Dump, s/n CAT00740LAXM00675, Cat 3406 diesel engine and powershift transmission, heated body (not hooked up), supplemental steering, engine retarder, air conditioning, and 29.5R25 tires. In good condition with fair to good tires.

2003 CATERPILLAR Model 740, 40 Ton 6x6 Articulated End Dump, s/n CAT00740VAXM00673, Cat 3406 diesel engine and powershift transmission, heated body (not hooked up), supplemental steering, engine retarder, air conditioning, and 29.5R25 tires. In good condition with fair to good and very good tires.

COMPACTION EQUIPMENT

1989 CATERPILLAR Model 815B Soil Compactor, s/n 17201090, Cat 3306 diesel engine and powershift transmission, padfoot drums with weld-on feet, straight blade with tilt, drum cleaners, ROPS over enclosed cab with heat, and light package. In good condition.

CATERPILLAR Model 825B Soil Compactor, s/n 43N00770, Cat D343 diesel engine and powershift transmission, padfoot drums with bolt-on feet, straight leveling blade, drum cleaners, enclosed ROPS cab, and light package. In good condition.

1999 CATERPILLAR Model CS-563C Vibratory Compactor, s/n 4KN01269, Cat 3116 diesel engine and hydrostatic transmission, 84" smooth drum, drum drive, drum cleaner, enclosed ROPS cab with heat, light package, and 18x26 tires. In good condition with good tires.

1993 CATERPILLAR Model CS-563 Vibratory Compactor, s/n 76G00355, Cat 3116 diesel engine and hydrostatic transmission, 84" smooth drum, drum drive, drum cleaner, enclosed ROPS cab with heat, light package, and 23.1x26 tires. In good condition with good tires.

1999 CATERPILLAR Model CS-563 Vibratory Compactor, s/n 76G00355, Cat 3116 diesel engine and hydrostatic transmission, 84" smooth drum, drum drive, drum cleaner, enclosed ROPS cab with heat, light package, and 23.1x26 tires. In good condition with good tires.

1993 CATERPILLAR Model CS-563 Vibratory Compactor, s/n 76G00355, Cat 3116 diesel engine and hydrostatic transmission, 84" smooth drum, drum drive, drum cleaner, enclosed ROPS cab with heat, light package, and 23.1x26 tires. In good condition with good tires.

1999 CATERPILLAR Model CS-563 Vibratory Compactor, s/n 76G00355, Cat 3116 diesel engine and hydrostatic transmission, 84" smooth drum, drum drive, drum cleaner, enclosed ROPS cab with heat, light package, and 23.1x26 tires. In good condition with good tires.

1993 CATERPILLAR Model CS-563 Vibratory Compactor, s/n 76G00355, Cat 3116 diesel engine and hydrostatic transmission, 84" smooth drum, drum drive, drum cleaner, enclosed ROPS cab with heat, light package, and 23.1x26 tires. In good condition with good tires.

1999 CATERPILLAR Model CS-563 Vibratory Compactor, s/n 76G00355, Cat 3116 diesel engine and hydrostatic transmission, 84" smooth drum, drum drive, drum cleaner, enclosed ROPS cab with heat, light package, and 23.1x26 tires. In good condition with good tires.

1993 CATERPILLAR Model CS-563 Vibratory Compactor, s/n 76G00355, Cat 3116 diesel engine and hydrostatic transmission, 84" smooth drum, drum drive, drum cleaner, enclosed ROPS cab with heat, light package, and 23.1x26 tires. In good condition with good tires.

1999 CATERPILLAR Model CS-563 Vibratory Compactor, s/n 76G00355, Cat 3116 diesel engine and hydrostatic transmission, 84" smooth drum, drum drive, drum cleaner, enclosed ROPS cab with heat, light package, and 23.1x26 tires. In good condition with good tires.

1993 CATERPILLAR Model CS-563 Vibratory Compactor, s/n 76G00355, Cat 3116 diesel engine and hydrostatic transmission, 84" smooth drum, drum drive, drum cleaner, enclosed ROPS cab with heat, light package, and 23.1x26 tires. In good condition with good tires.

1999 CATERPILLAR Model CS-563 Vibratory Compactor, s/n 76G00355, Cat 3116 diesel engine and hydrostatic transmission, 84" smooth drum, drum drive, drum cleaner, enclosed ROPS cab with heat, light package, and 23.1x26 tires. In good condition with good tires.

1993 CATERPILLAR Model CS-563 Vibratory Compactor, s/n 76G00355, Cat 3116 diesel engine and hydrostatic transmission, 84" smooth drum, drum drive, drum cleaner, enclosed ROPS cab with heat, light package, and 23.1x26 tires. In good condition with good tires.

1999 CATERPILLAR Model CS-563 Vibratory Compactor, s/n 76G00355, Cat 3116 diesel engine and hydrostatic transmission, 84" smooth drum, drum drive, drum cleaner, enclosed ROPS cab with heat, light package, and 23.1x26 tires. In good condition with good tires.

1993 CATERPILLAR Model CS-563 Vibratory Compactor, s/n 76G00355, Cat 3116 diesel engine and hydrostatic transmission, 84" smooth drum, drum drive, drum cleaner, enclosed ROPS cab with heat, light package, and 23.1x26 tires. In good condition with good tires.

1999 CATERPILLAR Model CS-563 Vibratory Compactor, s/n 76G00355, Cat 3116 diesel engine and hydrostatic transmission, 84" smooth drum, drum drive, drum cleaner, enclosed ROPS cab with heat, light package, and 23.1x26 tires. In good condition with good tires.

MOTOR GRADERS

CATERPILLAR Model 12G Motor Grader, s/n 61M05729, Cat 3306 diesel engine and powershift transmission, 12' hydraulic moldboard, rear multi-shank scarifier, enclosed ROPS cab with heat, light package, and 14.00x24 tires. In good condition with fair to good front and fair rear tires.



CATERPILLAR Model 12D Motor Grader, s/n 8T1649, Cat 6 cylinder pony start diesel engine and shuttle transmission, 12' moldboard, front scarifier, enclosed cab, light package, and 13.00x24 tires. In fair to good condition with fair to good tires.

MOTOR SCRAPERS



CATERPILLAR Model 637 Tandem Motor Scraper, s/n 65M0566, Cat D343 (Spacer plate) front and Cat 3306 rear diesel engines and powershift transmission, rear push block, enclosed ROPS cab, and 33.25x35 tires. In fair to good condition with fair tires.

CATERPILLAR Model 637 Tandem Motor Scraper, s/n 65M0561, Cat D343 (Spacer plate) front and Cat 3306 rear diesel engines and powershift transmission, rear push block, enclosed ROPS cab, and 33.25x35 tires. In fair to good condition with fair tires.

CATERPILLAR Model 637 Tandem Motor Scraper, s/n 65M00669, Cat D343 (Spacer plate) front and Cat 3306 rear diesel engines and powershift transmission, rear push block, enclosed cab, and 33.25x35 tires. In fair to good condition with very good front and fair rear tires.

CATERPILLAR Model 637 Tandem Motor Scraper, s/n 65M00590, Cat D343 (Spacer plate) front and Cat 3306 rear diesel engines and powershift transmission, rear push block, enclosed cab, and 33.25x35 tires. In fair to good condition with fair tires.

CATERPILLAR Model 637 Tandem Motor Scraper, s/n 65M00592, Cat D343 (Spacer plate) diesel engine and powershift transmission, rear push block, enclosed ROPS cab, light package, and 33.25x35 tires. In fair to good condition with fair tires.

Rebuilt Cat 3306 Diesel Engine, s/n 3N21197, with torque converter (Cat 637 Rear Engine)

1994 CATERPILLAR Model 416B, 4x4 Tractor Loader Extend-A-Hoe and Demolition Hammer, Cat 3054DI diesel engine and shuttle transmission, general purpose loader bucket with bolt-on cutting edge, 18" digging bucket, enclosed ROPS cab with heat and air conditioning, light package, and 12.5/80x18 front and 19.5Lx24 rear tires. In good condition with good front and fair rear tires. Hydraulic Demolition Hammer (Cat 426)



'94 Cat 416B 4x4 Extend-A-Hoe

POWERSCREEN Model Mark II Portable Screening Plant, s/n 2727729, Lister Petter 3 cylinder diesel engine, 5'x9' feed hopper with grizzly, 24"x35' feed conveyor, 4'x6' 2-deck vibratory screen, hydraulic raise and lower, and 7.50R16 tires. In good condition with good tires.



POWERSCREEN 24"x40' Hydraulic Discharge Conveyor, s/n 2441654, hydraulic raise and lower and 7.50x16 tires. In fair to good condition with fair tires.

PATTON Portable Coal Crusher, Detroit 3-53 diesel engine, 8'x10' surge bin, 48" chain crusher feed conveyor, 30" roll crusher, 30" chain discharge conveyor, mounted on Diamond T Model 940TD Tandem Axle Carrier. VIN# 676389, Cummins 6 cylinder diesel engine and Fuller RT910 transmission, 10.00x20 tires. In fair to good (upper) and poor (lower) condition with poor tires.

ROUGH TERRAIN CRANE



Galion 150A

GALION Model 150A, 15 Ton Hydraulic Rough Terrain Crane, s/n Unknown, Detroit diesel engine and powershift transmission, 4-section hydraulic boom, 2-sheave hook block, (4) hydraulic outriggers, enclosed cab with heat, and 14.00x24 tires. In fair to good condition with fair to good tires.

FORKLIFTS

1997 JCB Model 940, 8,000# Rough Terrain Forklift, s/n 662985, Perkins 4 cylinder diesel engine and shuttle transmission, 3-stage mast, 48" forks, side shift, enclosed ROPS cab with heat, light package, and 15.5x25 front and 12.5/80x18 rear tires. In good condition with good tires.

CATERPILLAR Model V100, 10,000# Pneumatic Tired Forklift, s/n 10Y378, 6 cylinder gas engine and powershift transmission, 218" 2-stage mast, 48" forks, side shift, FOPS canopy, dual front tires, and 8.25x15 front and 7.50x15 rear tires. In fair to good condition with fair tires.

CATERPILLAR Model T60B, 6,000# Solid Tired Forklift, s/n 14N2338, 4 cylinder LPG gas engine and hydrostatic transmission, 194" 3-stage mast, 42" forks, side shift, and FOPS canopy. In fair to good condition with fair tires.

CLARK Model TW25B, 2,500# Solid Tired Forklift, s/n TW125-166-3782FA, 24 volt battery and shuttle transmission, 130" 2-stage mast, 36" forks, side shift, and FOPS canopy. In good condition with good tires.

CROWN Model 30SPC, 3,000# Ride-On Forklift, s/n W-4998, 24 volt battery and hydrostatic transmission, 146" 2-stage mast, 36" forks, and solid tires. In good condition.

RAYMOND Model 11-R30TN, 1,000# Walk-Behind Forklift, s/n 011-79-2941, 24 volt battery and hydrostatic transmission, 126" 2-stage mast and 42" forks. In fair condition.

UTILITY TRACTORS, MOWERS, GATORS & STRAW BLOWER

JOHN DEERE Model 4240S, 4x4 Utility Tractor, s/n 347616L, John Deere 6466TL diesel engine and 16 speed transmission, 3-point hitch, PTO, (2) hydraulic outlets, front bumper pocket counterweights, enclosed ROPS cab with heat and air conditioning, light package, and 18.4R26 front and 20.8R38 rear tires. In good condition with good tires.



FORD Model 1210 Utility Tractor, s/n 1210U006973, Ford 3 cylinder diesel engine and hydrostatic transmission, 3-point hitch, PTO, 60" under belly mower deck, and 20x8x10 front and 29x12x15 rear tires. In good condition with good tires.

DEWEZE Model ATM72 All Terrain Mower, s/n N/A, Lister Petter 3 cylinder diesel engine and hydrostatic transmission, 72" mower deck, hydraulic self-leveling, ROPS post, and 25x12.5x12 tires. In good condition with good tires.

1999 WOODS 17' 3-Gang PTO Driven Batwing Mower, s/n 507168. In good condition.

(3) JOHN DEERE Model Gator 4x2 All Terrain Vehicles, Kawasaki gas engine and shuttle transmission, manual dump body, roll bar, and AT22.5x10-8 front and AT25x13-9 rear tires. In good condition with good tires.

GOSSIN Skid Mounted Straw Blower, s/n 513790, Briggs & Stratton 11HP. In good condition.



John Deere Gators

TRUCK TRACTORS AND LOWBOY TRAILERS

1992 KENWORTH T800 TRUCK TRACTOR AND 2004 TALBERT 51 TON LOWBOY Will Be Offered Separately and Then as an Entirety



'92 KW T800 & '04 TALBERT 51 TON

1992 KENWORTH Model T800 Tri-Axle Truck Tractor, Cat 3406B, 425HP diesel engine and Eaton Fuller 9 speed transmission, 44,000# rears, 12,860# front axle, 17,000# airlift 3rd axle, Jacobs engine brake, wetline, air ride suspension, airslide 5th wheel, 242" wheelbase, aluminum fuel tanks and wheels, air conditioning, power windows, heated mirrors, and 425/65R22.5 front, 11R22.5 lift axle, and 11R24.5 rear tires. In good condition with good tires. (083,626 Original Miles)

2004 TALBERT Model T30W-50SA-HRG-1-T1-60, 51 Ton Tri-Axle Lowboy Trailer, non ground bearing detachable gooseneck, 8'6"x24'6" level deck, wetline, air ride suspension, airlift 3rd axle, outriggers, chain dogs, and 255/70R22.5 tires. In very good condition with very good tires.

1994 KENWORTH Model T800B Single Axle Truck Tractor, Cat 3176B, 325HP diesel engine and Fuller RTL012610B, 10 speed transmission, 34,700# GVWR, air ride suspension, 150" wheelbase, heated mirrors, air conditioning, and 295/75R22.5 tires. In good condition with very good tires.

1975 ROGERS Model A20LD Tri-Axle Drop Side Lowboy Trailer, non ground bearing detachable gooseneck, 8'x22' level deck, 5" drop, flip-up 3rd axle, air ride suspension, outriggers, chain dogs, and 255/70R22.5 tires. In good condition with very good tires.

1975 ROGERS Model 13HRG-50-35DSF, 35 Ton Tandem Axle Lowboy Trailer, ground bearing detachable gooseneck, 8'x22' level deck, wetline, ears for flip-up 3rd axle, outriggers, chain dogs, and 11R22.5 tires. In poor to fair condition with fair tires.

DUMP TRUCKS & TAILGATE SPREADER



'94 KW T800B

1994 KENWORTH Model T800B Single Axle Dump Truck, Cat 3176B diesel engine and Fuller RTL012610B, 10 speed transmission, Super City model 9-30-04 11" steel dump body, s/n D-2642, electric tarp, under-bed storage box, tow package, aluminum wheels, power & heated mirrors, power passenger window, air conditioning, cruise control, and 11R22.5 tires. In very good to excellent condition with very good to excellent tires.

1988 FREIGHTLINER Tandem Axle Dump Truck, Cummins NTC-315, 315HP diesel engine and Eaton Fuller 8L, 10 speed transmission, J&J 15'6" steel dump body, Jacobs 2-position engine brake, spring suspension, air conditioning, and 425/65R22.5 front and 11R24.5 rear tires. In good condition with fair to poor front and fair to good rear tires.

1987 FREIGHTLINER Tandem Axle Dump Truck, Cummins NTC-315, 315HP diesel engine and Eaton Fuller Roadranger 9 speed transmission, Galion 16" steel dump body, 2-position engine brake, spring suspension, air conditioning, and 425/65R22.5 front and 11R24.5 rear tires. In good condition with good tires.

1985 MACK Model R686ST Tandem Axle Dump Truck, Mack EM6-300R diesel engine and 5 speed transmission, 16'6" tub style dump body with chute, engine brake, 60,000# GVWR, and 11R24.5 tires. In good condition with good tires.

1987 FORD Model L-8000 Single Axle Dump Truck, Cat 3208 diesel engine and 5 speed transmission with 2 speed rear, Super City 11" aluminum dump body with coal chute, air brakes, and 11.00R22 tires. In good condition with fair front and good rear tires.

HTC Model 180DFQ, 8' Hydraulic Tailgate Spreader, s/n B0380628EFQ, 4' fold-up side discharge conveyor. In good condition.

BOOM, KNUCKLEBOOM, UTILITY, AND FLATBED TRUCKS



National 839B

1987 NATIONAL Model 839B, 17.5 Ton Hydraulic Boom, s/n 19127, 22'-39' 2-section hydraulic boom, 50' sheave height, single sheave hook block, mounted on 1987 International Model Paystar 5070 Tri-Axle Flatbed Truck, Cat 3406B, 400HP diesel engine and 15 speed transmission, 20,000# front axle 46,000# rears, and 20,000# airlift rear axle, 22, wooden flatbed with stake pockets and chain dogs, (4) hydraulic outriggers, 425/65R22.5 front, 11R24.5 rear, and 11R22.5 lift tires. In fair to good condition with fair to good tires.

1987 FREIGHTLINER Tandem Axle Knuckleboom Truck, Cat 3406B, 310HP diesel engine and Eaton Fuller Roadranger 9 speed transmission, Effer model 1900DN knuckleboom, s/n 1707H1489, with (2) knuckleboom sections and (3) telescopic extensions, (2) hydraulic outriggers, 18' flatbed, Jacobs engine brake, air ride suspension, 52,000# GVWR, air conditioning, heated mirrors, and 425/65R22.5 front and 11R22.5 rear tires. In good condition with good front and fair rear tires.

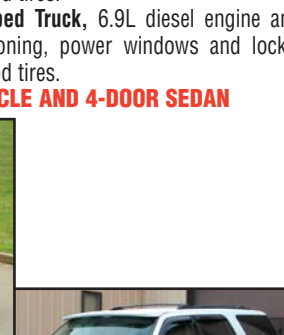
1992 FORD Model F-350 Custom 4x4 Utility Truck, 7.3L diesel engine and 5 speed transmission, 9' utility body, PTO, dual fuel tanks, material rack, air conditioning, and 235/85R16 tires. In good condition with good tires.

1986 FORD Model F-350XL Single Axle Flatbed Truck, 6.9L diesel engine and 4 speed transmission, 12' flatbed, air conditioning, power windows and locks, and 235/85R16 tires. In good condition with good tires.

CAB/CHASSIS, SPORT UTILITY VEHICLE AND 4-DOOR SEDAN



'08 Ford F-450 XLT 4x4



'03 Eddie Bauer 4x4 Expedition



'87 Crown Victoria

2008 FORD Model F-450XL Super Duty 4x4 Single Axle Quad Cab Cab and Chassis, Powerstroke 6.4L diesel engine and automatic transmission, 186" wheelbase, dual rear wheels, air conditioning, cruise control, power windows and locks, AM/FM CD player, and 225/70R19.5 tires. In excellent condition with excellent tires. (40 Original Miles) (Transferable Warranty)

2003 FORD Model Eddie Bauer Expedition 4x4 Sport Utility Vehicle, Triton 5.4L V-8 gas engine and automatic transmission, power package, air conditioning, keyless entry, running boards, AM/FM CD player, and 265/70R17 tires. In very good condition with good tires. (11,000 Original Miles)

1987 FORD Model Crown Victoria LTD, 4-Door Sedan, 5.0L V-8 gas engine and automatic transmission, power package, air conditioning, cruise control, and 215/70R15 tires. In good condition with good tires.

DUMP AND SCRAPER TRAILERS

1975 CITY 30' Tandem Axle Aluminum Dump Trailer, VIN# A753624, 2-way tailgate, spring suspension, and 10.00x22 tires. In good condition with good tires.

1971 L. B. SMITH Model CD-60D-8SP, 30 Ton Tri-Axle Scraper Trailer, 51" tire well, 8'6" over rear axles, 6' ramps, air ride front axle, outriggers, and 10.00x15 front and 11R17.5 rear tires. In good condition with good tires.

LUBE, STORAGE, OFFICE, AND MISCELLANEOUS TRAILERS

STRICK Tandem Axle Lube Trailer, 3,000 gallon fuel tank, (2) 300 gallon product tanks with pneumatic pumps, skid mounted air compressor, Ford 4 cylinder gas engine (1,595 hours), and 10.00R20 tires. In fair condition with poor to fair tires.

40' Tandem Axle Lube Trailer, (2) 3,000 gallon pressurized tanks, (4) outlets with fuel hoses and guns, swing rear doors, curbside door, and 10.00x22 tires. In good condition with fair tires.

STRICK 40' Tandem Axle Lube Trailer, (2) 3,000 gallon pressurized tanks, (4) outlets, gas powered pump with self-winding hose reel, swing rear doors, curbside door, and 10.00x20 tires. In good condition with fair tires.

(6) 40' Tandem Axle Van Storage Trailers • TRAILMOBILE 35' Single Axle Van Storage Trailer • 35' & 32' Tandem Axle Van Storage Trailer • ACTION 8'x20' Single Axle Office Trailer, electric baseboard heat • WILLIAMS 12'x50' Tandem Axle Office Trailer, (1) center and (2) end offices, electric forced air heat & ac • FRUEHAUF 45' Spread Axle Truss Trailer • 26'-30' Single Axle Extendable Pole Trailer • 17' Aluminum Van Body

GENERATORS, AIR COMPRESSORS, TAR BUGGIES & PORTABLE PUMP

CATERPILLAR 3208, 125 KW Skid Mounted Gen Set • DELCO 15 KW Skid Mounted Gen Set, s/n 83-K-70, Detroit 2 cylinder diesel engine • 1993 INGERSOLL-RAND P185CWJD, 185 CFM Portable Air Compressor, s/n 220104UKC328, JD 4039DF diesel engine • INGERSOLL-RAND DR600 Portable Air Compressor, s/n 88508-U75-500, Detroit 6-53 diesel engine • JOY G150V Portable Air Compressor, s/n 121994, diesel engine • CHAUSSE Portable Tar Buggy • CONCORD CRE222 Portable Tar Buggy • GORMAN-RUPP 16C2-5034, 6" Portable Centrifugal Pump, Detroit diesel engine

TRENCHERS, STREET SWEEPER & SCISSOR LIFT

VERMEER T600D Crawler Trencher, s/n 1966 (Complete Machine - Not Running) • VERMEER T600C Crawler Trencher, s/n 1550 (Parts Machine) (Missing Trencher Chain, Chain Idler, Engine Parts and Hydraulic Crumpler) • ELGIN White Wing T Street Sweeper, s/n T1296D (Not Running) • JLG 15S-1 Electric Scissor Lift, s/n 0208101296

MISCELLANEOUS TRUCKS

FORD 8000 Cab Over Cab and Chassis (Parts Only) • FORD F-800 Tandem Axle Cab and Chassis • 1970 INTERNATIONAL 1600 Single Axle Fuel and Lube Truck (Parts Only) • 1976 FORD F-880 Single Axle Lube Truck • FORD 750 Tandem Axle Fuel Truck (Parts Only) • 1971 Ford 9000 Tandem Axle Fuel Truck • 1973 INTERNATIONAL 2110A Single Axle Dump Truck • CHEVROLET Van Body Truck (Parts Only) • 1977 AUTOCAR Tandem Axle Winch Truck • FORD 7000 Single Axle Tire Truck • FORD Model 600, 6x6 Water Truck • INTERNATIONAL Model 1800A Single Axle Water Truck (Parts Only) • INTERNATIONAL 200 Material Truck, (Not Running)

MACHINE COMPONENTS & PARTS

(2) ROPS Canopies (Cat 637C) • (2) Reconditioned D8K Side Frames; SBG tracks • (3) 9' Complete Track Frames with hydraulic drive motors and 18" TBG pads (Barber Green Asphalt Plant) • Large Quantity of Assorted Cutting Edges • Blade Guards • Rebuilt Engine Block (Cat 3306) • (2) Cat 3306 Diesel Engines (Running Take-Outs) • (3) Cat D343 Engine Cores • Cat D343 Engine Block • Cat D342 Diesel Engine (No Turbo) (Cat D8K) • (2) Cat D353 Diesel Engines (Parts Only) (Cat D9) • Re-buildable Head for Cat D9's • Detroit 6V71 Diesel Engine (Terex TS-24 Rear) • Detroit 6-71 Diesel Engine with new piston • John Deere 4045 Diesel Engine (Seized) • Cat 637C Rear Engine Parts • International 125 Engine Parts • Large Assortment Engine Parts: Cat D8, Cat D9, Terex, Detroit, etc. • Rebuilt Cat D8K Torque Converter • Rebuilt Cat 977 Torque Converter • Cat Torque Converter • ALLISON MTC53SD24 Transmission • Cat 631B Transmission • Cat 637D Rear Transmission • Cat D9 Transmission • Cat D8K Transmission • Cat D8 and D9 Undercarriage Components • Hydraulic Cylinder (Cat D8K) • Wheel (Cat 769) • Front Planetary (Terex TS24) • Large Assortment of Cat Bolts & Pins • Large Assortment of Truck Tires & Rims • Truck Seat • Rollers (Power Screen Conveyor) • Cat Bearings • U Joints • Assorted Hydraulic & Air Hoses • Belts • Large Assortment Bucket Teeth • (2) Hydraulic Driven Water Pumps

MISCELLANEOUS ATTACHMENTS

FORD 8' 3-Point Hitch Stone Rake • BRADCO Model 630, 48" Hydraulic Trencher Attachment (Skid Steer Loader) • CAT BA-25, 8' Hydraulic Broom Attachment (Skid Steer Loader)