

Negus-Sons, Inc.
Omaha, Nebraska



Notice: By order of Senior Secured Creditor, all assets of Negus-Sons, Inc., in which a security interest is perfected, must be sold. All equipment will positively sell to the highest bidder regardless of price.

Auctioneer's Note: The auction will start at the Negus main yard in Omaha, Nebraska. The crowd will then move by bus to the satellite location. After a few hours of selling at the satellite location, the auction will return to and end at the Negus main yard. The yards are approx. (5) miles apart. The basic breakdown is: Main Yard – Trucks, Trailer, Farm Tractors, Implements, Sheepsfoot Compaction, Tools, Parts Machines • Satellite Yard – Heavy Construction Equipment. Please contact the auction company for more details.

Parking Directions: ALL AUCTION DAY PARKING WILL BE AT CARTER LAKE – SHUTTLE BUSES WILL TRANSPORT. Directions from Eppley Airport to Parking area at Carter Lake Site: Exit airport and turn left onto Abbott Drive. Continue (1.3) miles and turn right onto Locust Avenue. Proceed (0.2) miles to sale site parking area on left.

Location: The auction will be held at the Main Yard: 6100 North 16th Street, Omaha, Nebraska 68110 and the Satellite Yard: 1301 East Locust Street, Carter Lake, Iowa 51510

Terms: Payment in full is required on sale day by cash, certified funds, or check with a bank letter of guarantee. Sample letter of guarantee: "We hereby guarantee the payment of our customer _____ written on his account up to _____ dollars for purchases at your auction sale on June 30, 2010." All guaranteed checks should be made payable to Hunyady Auction Co.

Sales Tax: Items sold at both the main yard in Omaha, Nebraska and at the satellite yard in Carter Lake, Iowa will be subject to sales tax collected at the rate of 7%. Sales tax on motor vehicles will not be collected at either site, but will be payable at time of registration.

Financing: Financing is available; please contact Susan at Hunyady Auction Company for complete details.

Inspection: Items will be available for inspection beginning one week prior to the auction, with the exception of Sunday, June 27, and continuing through sale day, from 8:00 a.m. until 5:00 p.m. Items may also be inspected sale day morning beginning at 7:00 a.m.

Removal: After complete payment, all sale items may be removed on sale day as long as the removal activity is not disruptive to the sale and only until 5:00 p.m. Items may also be removed Thursday and Friday, July 1 and 2, as well as Tuesday, July 6 thru Friday, July 9 from 8:00 a.m. until 5:00 p.m. All items must be removed no later than Friday, July 9, 2010 at 5:00 p.m.

Sale Site Directions: FROM ALL INTERSTATES: Follow signs to Eppley Airport and then follow directions below. Eppley Airport is on Abbott Drive.

FROM EPPLEY AIRPORT: Exit Airport onto Abbott Drive. Bear left onto Storz Blvd/Route 75. Travel approx. (2) miles to 16th Street. Turn right and proceed (0.2) miles to Negus-Sons sale site on left.

FROM NEGUS-SONS SITE TO CARTER LAKE SITE: Exit Negus-Sons site and turn right. Proceed to Storz Blvd and turn left. Travel (4.7) miles to Locust Street and turn right. Proceed (0.3) miles to sale site on left.

Airport Information: The area is serviced commercially and privately through Omaha Eppley Airport (OMA) 402-661-8017. Rental cars are available.

Motel Information: All hotels are in close proximity to both sale sites. Candlewood Suites (Auction Headquarters) 2601 Abbott Plaza, Omaha, NE 68110, (402) 342-2500 • Holiday Inn Express, 2510 Abbott Plaza, Carter Lake, IA 51510, (402) 205-4900 • LaQuinta Inns & Suites, 1201 Avenue H, Carter Lake, IA 51510, (712) 347-6595

NE VENDOR NO: 10723498 • **IA VENDOR NO:** 19735

PLEASE VISIT OUR WEBSITE WWW.HUNYADY.COM FOR COMPLETE EQUIPMENT DESCRIPTIONS, YEAR OF MANUFACTURE, METER AND ODOMETER READINGS!

BEGINNING TUESDAY, JUNE 22ND: SALE SITE PHONE: (402) 827-9321 SALE SITE FAX: (402) 898-9366 (ALL CALLS PRIOR TO JUNE 22 SHOULD BE DIRECTED TO HUNYADY MAIN OFFICE AT (215) 361-9099)

TANK AND FUEL TRAILERS



TRAILMOBILE 6,200 Gallon Fuel Tank Trailer, Briggs & Stratton 2" transfer pump • 6,500 Gallon Tank Trailer, Briggs & Stratton 1.5" transfer pump • **TRAILMOBILE** 5,000 Gallon Tank Trailer, Briggs & Stratton 1.5" transfer pump • Approx. 3,500 Gallon Portable Fuel Tank, Briggs & Stratton 1.5" transfer pump • 1,000 Gallon T/A Portable Fuel Tank, Briggs & Stratton 2" • 1,000 Gallon T/A Fuel Tank Trailer, Honda 5.5HP pump • (8) 1,000 Gallon T/A Tank Trailer, Honda 1.5" transfer pump • (6) 1,000 Gallon T/A Fuel Tank Trailer, Briggs & Stratton 3.5HP pump • 1,000 Gallon T/A Fuel Trailer, Briggs & Stratton 1.5" transfer pump • (2) 500 Gallon T/A Portable Fuel Tank, Briggs & Stratton 1.5" transfer pump • 500 Gallon T/A Fuel Tank Trailer, Briggs & Stratton 3.5HP transfer pump • 250 Gallon Single Axle Transfer Tank • 500 Gallon T/A Tank Trailer • Shopmade Lube Trailer, (6) tank compartments, Alemite air actuated pneumatic pumps, 11HP 2-stage air compressor, (2) hose reels

FUEL TRAILERS WITH PUMPS

FUEL TRAILERS WITH PUMPS



ABSOLUTE AUCTION

By Order of Secured Creditor

WEDNESDAY, JUNE 30, 2010 - 9:00 A.M. CDT



Negus-Sons, Inc.

(45) CAT MOTOR SCRAPERS

Omaha, Nebraska & Carter Lake, Iowa



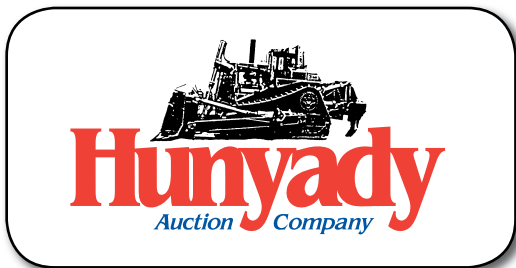
(12) CAT MOTOR GRADERS



(18) JOHN DEERE TRACTORS



(22) CRAWLER TRACTORS



1440 COWPATH RD. • HATFIELD, PA 19440
215/361-9099 • Fax: 215/361-9212

PRE-SORTED
FIRST CLASS MAIL
US POSTAGE
PAID
HAVERTOWN, PA
PERMIT #45



(12) ARTICULATED MOTOR GRADERS



CAT 12G



CAT 140G



CAT 140G

1989 CAT 12G, s/n 61M13326, Cat 3306 dsl engine and ps trans, 14' moldboard, EROPS, drawbar, and 14.00x24 tires. In good condition with good tires.

1995 CAT 140G, s/n 5MD03281, Cat 3306 dsl engine and ps trans, 14' moldboard, drawbar, EROPS, ac, light package, and 14.00x24 tires. In good condition with good tires.

1990 CAT 140G, s/n 72V13717, Cat 3306 dsl engine and ps trans, 14' moldboard, EROPS, ac, light package, drawbar, and 14.00x24 tires. In good condition with good tires.

1988 CAT 140G, s/n 72V11018, Cat 3306 dsl engine and ps trans, 14' moldboard, EROPS, ac, light package, drawbar, and 14.00x24 tires. In fair to good condition with fair to good tires.

1986 CAT 140G, s/n 72V9543, Cat 3306 dsl engine and ps trans, 14' moldboard, EROPS, light package, and 14.00x24 tires. In good condition with good tires.

1985 CAT 140G, s/n 72V08999, Cat 3306 dsl engine and ps trans, 14' moldboard, drawbar, EROPS, ac, light package, and 14-24 tires. In good condition with good tires.

CAT 140G, s/n 72V07788, Cat 3306 dsl engine and ps trans, 14' moldboard, EROPS, ac, light package, drawbar, and 14.00x24 tires. In good condition with good tires.

CAT 140G, s/n 72V6649, Cat 3306 dsl engine and ps trans, 12' moldboard, scarifier, drawbar, EROPS, light package, and 14.00x24 tires. In fair to good condition with fair to good tires.

CAT 140G, s/n 72V06776, Cat 3306 dsl engine and ps trans, 14' moldboard, EROPS, light package, drawbar, and 14.00x24 tires. In fair to good condition with fair to good tires.

CAT 140G, s/n 72V06030, Cat 3306 dsl engine and ps trans, 14' moldboard, EROPS, ac, drawbar, and 14.00x24 tires. In good condition with good tires.

CAT 140G, s/n 72V04671, Cat 3306 dsl engine and ps trans, 12' moldboard, scarifier, drawbar, EROPS, light package, and 14.00x24 tires. In fair to good condition with fair to good tires.

CAT 140G, s/n 72V3881, Cat 3306 dsl engine and ps trans, 14' moldboard, EROPS, light package, drawbar, and 14.00x24 tires. In fair condition with poor to fair tires.



CAT 140G



CAT 140G



CAT 140G

(47) MOTOR SCRAPERS AND WATER WAGONS

(9) CAT 631D Motor Scrapers, Cat 3408 dsl engine and ps trans, cushion hitch, ROPS canopy and 37.25x35 tires. (s/n 24W3823 Good Condition/Good Tires; s/n 24W3860 Good Condition/Good Tires; s/n 24W3861 Fair Condition/Fair Tires; s/n 24W03851 Good Condition/Good Tires; s/n 24W2328 Good Condition/Good Tires; s/n 24W2405 Good Condition/Good Tires; s/n 24W1919 Parts/No Engine; s/n 24W1198



CAT 627B'S



CAT 627B



CAT 627B



CAT 627B

Good Condition/Good Tires; s/n 24W1222 Good Condition/Good Tires)

(34) CAT 627B Tandem Motor

Scraper, (2) Cat 3306 dsl engines and ps trans, cushion hitch, ROPS canopy, and 33.25x29 tires. s/n 15S01450 Good Condition/Good Tires; s/n 14S872 Fair to Good Condition/Fair to Good Tires; s/n 15S1329 Fair to Good Condition/Fair to Good Tires; s/n 14S973 Fair to Good Condition/Fair to Good Tires; s/n 15S1013 Good Condition/Fair to Good Tires; s/n 14S787 Good Condition/Fair Tires; s/n 15S1027 Good Condition/Good Tires; s/n 15S1014 (No Tires-Parts Machine-Missing Rear Engine); s/n 14S673 Good Condition/Fair Tires; s/n 15S934 Good Condition/Fair to Good Tires; s/n 15S907 Fair Condition/Fair Tires; s/n 14S761 Fair Condition/Fair to Good Tires; s/n 14S664 Good Condition/Good Tires; s/n 14S646 Fair to Good Condition/Fair to Good Tires; s/n 14S663 Good Condition/Fair to Good Tires; s/n 15S540 Good Condition/Good Tires; s/n 15S611 Good Condition/Good Tires; s/n 15S649 Fair Condition/Fair Tires; s/n 14S463 Good Condition/Good Tires; s/n 14S462 (Parts-Rear Engine Missing); s/n 15S485 (Parts)

Push/Pull: s/n 15S1426 Good Condition/Good Tires; s/n 15S1337 Good Condition/Fair Tires; s/n 15S1263 Fair Condition/Fair Tires; s/n 15S1244 Good Condition/Fair to Good Tires; s/n 14S915 Fair to Good Condition/Fair to Good Tires; s/n 15S1279 Good Condition/Good Tires; s/n 15S1111 Good Condition/Fair to Good Tires; s/n 15S1007 Good Condition/Fair to Good Tires; s/n 15S966 Fair to Good Condition/Fair to Good Tires; s/n 15S848 Good Condition/Good Tires; s/n 15S797 Good Condition/Good Tires; s/n 14S484 Good Condition/Fair Tires; s/n 15S970 Good Condition/Good Tires

1991 CAT 613C Elevating Motor Scraper, s/n 92X02189, Cat 3208 dsl engine and ps trans, EROPS, heat and ac, light package, and 23.5x25 tires. In good condition with fair to good tires.

CAT 613C Elevating Motor Scraper, s/n 92X520, Cat 3208 dsl engine and ps trans, EROPS, light package, and 23.5x25 tires. In good condition with fair to good tires.

1985 CAT 627B Articulated Water Wagon, s/n 15S1699, Cat 3306 dsl engine and ps trans, Klein 7,000 gallon water tank with rear spray bars, 12' knockdown blade, and 29.5x29 tires. In fair condition with fair tires.



CAT 627B



CAT 613C'S



CAT 631D



CAT 631D



CAT 631D

CAT 627A Water Wagon, s/n 54K783, Cat 3306 dsl engine and ps trans, Klein 5,000 gallon water tank, (2) spray heads, ROPS canopy, and 29.5x29 tires. In fair condition with fair tires.

(22) CRAWLER TRACTORS



'05 JOHN DEERE 650JLT

2005 JOHN DEERE 650J LT, s/n T0650JX112290, John Deere 6 cyl dsl engine and hydrostatic trans, 6-way blade, ROPS canopy with sweeps, and 18" SBG pads. In good condition with good undercarriage.

CAT D3, s/n 79U5942, Cat 3204 dsl engine and ps trans, 6-way blade and 16" SBG pads. In fair condition with poor undercarriage.

2000 CAT D4C LGP Series III, s/n 4LS00466, Cat 3046 dsl engine and hydrostatic trans, 6-way blade, 3rd valve, EROPS, ac, light package, and 18" SBG pads. In good condition with good undercarriage.

1998 CAT D4C LGP Series III, s/n 4LS00263, Cat 3046 dsl engine and hydrostatic trans, 6-way blade, 3rd valve, ROPS canopy, light package, and 25" SBG pads. In good condition with good undercarriage.

1998 CAT D4CXL Series III, s/n 8CS00536, Cat 3046 dsl engine and hydrostatic trans, 6-way blade, 3rd valve, ROPS canopy, light package, and 25" SBG pads. In good condition with fair to good undercarriage.

1997 CAT D4C LGP Series III, s/n 4LS00180, Cat 3046 dsl engine and hydrostatic trans, 6-way straight blade, 3rd valve, ROPS canopy with sweeps, light package, and 25" SBG pads. In good condition with fair to good undercarriage.

1995 CAT D4C LGP Series III, s/n 7SL00358, Cat 3046 dsl engine and ps trans, 6-way blade, ROPS canopy, light package, and 25" pads. In good condition with good undercarriage.

1999 CAT D5C LGP Series III Hystat, s/n 6CS00659, Cat 3046 dsl engine and hydrostatic trans, 6-way blade, 3rd valve, ROPS canopy, light package, and 26" SBG pads. In good condition with good undercarriage.

1998 CAT D5C LGP Series III, s/n 6CS00402, Cat 3046 dsl engine and hydrostatic trans, 6-way blade, 3rd valve, laser system, ROPS canopy, light package, and 26" SBG pads. In good condition with fair undercarriage.

1998 CAT D5C LGP Series III, s/n 6CS00377, Cat 3046 dsl engine and hydrostatic trans, 6-way blade, 3rd valve, ROPS canopy, light package, and 26" SBG pads. In good condition with good undercarriage.

1996 CAT D5C LGP Series III, s/n 6ZL00532, Cat 3046 dsl engine and ps trans, 6-way blade, ROPS canopy, light package, drawbar, and 26" DBG pads. In good condition with good undercarriage.

CAT D6C, s/n 76A1410, Cat D333T dsl engine and ps trans, cable blade, cable control unit, s/n 9D28068, drawbar, ROPS canopy, and 22" SBG pads. In fair condition with poor to fair undercarriage.

CAT D8K, s/n 77V5261, Cat D342T dsl engine and ps trans, semi-U blade with tilt, ROPS canopy with sweeps, light package, and 26" SBG pads. In good condition with good undercarriage.

CAT D8K, s/n 77V768, ps trans, drawbar, ROPS canopy, and 24" SBG pads. In poor condition with poor undercarriage. (Parts-Missing Engine & Blade)

CAT D8H, s/n 46A30602, Cat D342 dsl engine and ps trans, semi-U blade with tilt, drawbar, ROPS canopy with sweeps, and 26" SBG pads. In fair to poor condition with fair to poor undercarriage.

CAT D8H, s/n 46A15002, Cat D342T dsl engine and ps trans, semi-U blade with tilt, 2-barrel single shank ripper, ROPS canopy with sweeps, and 26" SBG pads. In good condition with good undercarriage.

CAT D8H, s/n 46A10309, Cat D342T dsl engine and ps trans, cable blade, CCU, ROPS canopy with sweeps and rear forestry screen, and 24" SBG pads. In poor condition with poor undercarriage.

CAT D8H, s/n 46A9173, Cat D342T dsl engine and ps trans, rear drawbar and 24" SBG pads. In poor condition with poor undercarriage. (No Blade-Parts)

CAT D9H, s/n 90V7447, Cat D353 dsl engine (Spacer Plate) and ps trans, hydraulic cushion blade, 4-barrel single shank ripper, EROPS, ac, light package, and 24" SBG pads. In fair to good condition with fair to good undercarriage.

CAT D9H, s/n 90V9181, Cat D353 dsl engine (Spacer Plate) and ps trans, hydraulic lift cushion blade, drawbar, EROPS, ac, light package, and 27" SBG pads. In good condition with good undercarriage.

CAT D9G, s/n 66A13856, Cat D353 dsl engine and ps trans, straight blade with hydraulic tilt, drawbar, ROPS canopy, and 27" SBG pads. In poor condition with poor undercarriage. (Hole In Engine Block)

CAT D9G, s/n 66A4203, Cat D353 dsl engine and ps trans, sun canopy, rear cushion, and 27" SBG pads. (No Blade-Parts)



CAT D4C'S



CAT D4C'S AND D5C'S



CAT D8K



CAT D8H



CAT D9H



CAT D9H

(5) CRAWLER LOADERS



CAT 953C

2003 CAT 953C, s/n 2ZN05616, Cat dsl engine and hydrostatic trans, gp loader bucket with bolt-on teeth, EROPS, ac, light package, and 20" DBG pads. In good condition with good undercarriage.

1991 CAT 953, s/n 20Z3922, Cat 3204 dsl engine and hydrostatic trans, gp bucket, EROPS, light package, and 20" DBG pads. In good condition with good undercarriage.

1998 CAT 963B LGP, s/n 9BL02500, Cat 3116 dsl engine and hydrostatic trans, gp loader bucket with pin-on teeth, EROPS,

heat and ac, and 21" DBG pads. In good condition with fair to good undercarriage.

CAT 977K, s/n 11K7890, Cat 3306 dsl engine and ps trans, gp loader bucket with weld-on teeth, ROPS canopy, and 18" DBG pads. In fair condition with poor undercarriage.

CAT 977K, s/n 11K3896, Cat 3306 dsl engine and ps trans, 8' gp loader bucket with teeth, drawbar, ROPS canopy, and 18" DBG pads. In fair condition with fair undercarriage.



CAT 963B

(4) RUBBER TIRED LOADERS



'06 CAT 938G

2006 CAT 938G Series II, s/n CAT0938GJRTB01872, Cat 3126 dsl engine and ps trans, gp loader bucket, Cat quick disconnect, EROPS, ac, light package, and 20.5x25 tires. In good condition with good tires. (Pemberton PF 1167, 72" Fork Attachments To Be Sold Separately)

1995 CAT 938F, s/n 1KM01336, Cat 3116 dsl engine and ps trans, gp loader bucket with bolt-on cutting edge, EROPS, ac, light package, and 20.5x25 tires. In good condition with good tires.

1994 CAT 950F Series II, s/n 8TK1217, Cat 3116 dsl engine and ps trans, gp bucket with bolt-on cutting edge, EROPS, ac, light package, and 23.5R25 tires.

1986 CAT 936, s/n 33Z1958, Cat 3304 dsl engine and ps trans, gp loader bucket with bolt-on cutting edge, EROPS,

CAT 950F

light package, and 20.5x25 tires. In fair to good condition with fair tires.



'95 CAT 938F



CAT 936

(8) HYDRAULIC EXCAVATORS



'97 CAT 345BL

1997 CAT 345BL, s/n 4SS00366, Cat 3176 dsl engine and hydraulic drive, 12' dipper stick, 68" digging bucket, 17'9" crawlers, and 35.5" TBG pads. In good condition with good undercarriage.



'95 CAT 330L

1995 CAT 330L, s/n 5YM00922, Cat 3306B dsl engine and hydraulic drive, EROPS, 16'6" crawlers, and 33" TBG pads. In fair condition with fair undercarriage. (Stick Broken and Boom Removed)



'94 CAT 330L

1994 CAT 330L, s/n 5YM00347, Cat 3306 dsl engine and hydraulic drive, 10' dipper stick, 56" digging bucket, EROPS, light package, 16'4" crawlers, and 33" TBG pads. In fair to good condition with fair to good undercarriage.

1994 CAT 330L, s/n 5YM00417, Cat 3306B dsl engine and hydraulic drive, 12' dipper stick, 60" digging bucket, 16'6" crawlers, and 33.5" TBG pads. In fair to good condition with fair to good undercarriage.



'05 CAT 325CL

1994 CAT 330L, s/n 8FK00934, Cat dsl engine and hydraulic drive, 16'6" crawlers and 34" TBG pads. In poor condition with poor undercarriage. (Stick and Boom Removed)

2005 CAT 325CL, s/n CAT0325CABFE01644, Cat 3126 dsl engine and hydraulic drive, 10' 9" dipper stick, 44" gp bucket, 15'3" crawlers, and 31" TBG pads. In very good condition with very good undercarriage.



'97 CAT 325BL

1997 CAT 325BL, s/n 2JR01040, Cat 3116 dsl engine and hydraulic drive, 10' dipper stick, 63" gp bucket, 15'4" crawlers, and 32" TBG pads. In fair to good condition with fair to good undercarriage.



1995 CAT 325L, s/n 2SL386, Cat 3116 dsl engine and hydraulic drive, 10' dipper stick, 44" digging bucket, 15'3" crawlers, and 31" TBG pads. In fair condition with fair undercarriage.

Buckets: 52" (Cat 325) • 48" with QuickTach (Cat 235)

'95 CAT 325L

(5) ARTICULATED END DUMPS



CAT D350C'S

1988 CAT D350C, s/n 8XC00265, Cat 3306 dsl engine and ps trans, poly bed liner and 26.5-25 tires. In fair condition with fair tires.

1987 CAT D350C, 6x6, s/n 8XC00135, Cat 3306 dsl engine and ps trans, bed liner and 26.5-25 tires. In fair condition with fair tires.

1987 CAT D350C, 6x6, s/n 8XC00229, Cat 3306 dsl engine and ps trans, bed liner, EROPS, ac, and 26.5-25 tires. In fair to good condition with fair to good tires.

1987 CAT D350C, 6x6, s/n 8XC00230, Cat 3306 dsl engine and ps trans, bed liner, EROPS, ac, and 26.5R25 tires. In fair condition with fair tires. (Not Running)

1987 CAT D350C, 6x6, s/n 8XC00228, ps trans, 26.5R25 tires. In poor condition with poor tires. (Parts-Missing Engine)

VIBRATORY COMPACTORS



'97 IR SD100

1997 INGERSOLL-RAND SD100 ProPac Padfoot, s/n 148321, Cummins 4 cyl dsl engine and hydrostatic trans, 84" drum with cleaners, and 23.1x26 tires. In good condition with good tires. (Removable Feet)

1995 CAT CP323 Padfoot, s/n 6JD00480, Cat 4 cyl dsl engine and hydrostatic trans, 48" drum, 65" backfill blade, ROPS canopy with side screens, and 9.5-24 tires. In good condition with fair tires.



'95 CAT CP323

(23) TOW BEHIND DOUBLE DRUM SHEEPSFOOT ROLLERS



SHEEPSFOOT ROLLERS

VIBRO PLUS CG43, 72" (Single Drum) • **AMERICAN/Shop Built Road Rumble 72"** • **GERHARDT 60"** • **SHOVEL SUPPLY L120, 60"** • (2) **AMERICAN 60"** Double Drum • (2) **Shopmade 60"** • (2) **YOUNG 48"** • (7) **AMERICAN 48"** • **FERGUSON 112, 48"** • **AMERICAN 42"** • **LAPLANTE 48"** • **Shopmade 48"** • **ESSICK 72"** (Single Drum) Smooth Roller • **Shopmade Tow Behind Rubber Tired Roller**



SHEEPSFOOT ROLLERS

SKID STEER LOADERS



'07 BOBCAT T-300

2007 BOBCAT T-300 Crawler, s/n 532016642, Kubota 4 cyl dsl engine and hydraulic drive, 80" gp bucket with teeth and power Bob-Tach, hydraulic beyond, enclosed cab, heat and ac. In good condition with good undercarriage.

2006 BOBCAT T190 Crawler, s/n 531613321, Kubota dsl engine and hydrostatic trans, 72" bucket, power Bob-Tach, hi-flow hydraulics, and ac. In good condition with good undercarriage.

2005 BOBCAT T190 Crawler, s/n 527717354, Kubota dsl engine and hydrostatic trans, auxiliary hydraulics, 72" gp bucket, power Bob-Tach, and ac. In good condition with good undercarriage.

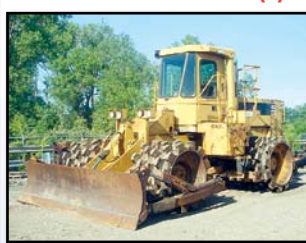


'06 BOBCAT T-190



'05 BOBCAT T-190

(8) SOIL COMPACTORS



CAT 815B

1985 CAT 815B, s/n 17Z00528, Cat 3306 dsl engine and ps trans, 39" wheels with weld-on feet, 12' leveling blade, drawbar, EROPS, ac, and light package. In fair to good condition.

CAT 824B, s/n 43N316, Cat D343 dsl engine and ps trans, 42" wheels with weld-on feet, drum cleaners, and 14' leveling blade. In good condition.

CAT 825B, s/n 43N320, Cat D343 dsl engine and ps trans, 44" wheels, 14' leveling blade, EROPS, and light package. In fair to good condition.

CAT 825B, s/n 43N493, Cat D343 dsl engine and ps trans, 44" wheels, 14' leveling blade, enclosed ROPS canopy, and light package. In fair condition.

CAT 825B, s/n 43N581, Cat D343 dsl engine and ps trans, 42" wheels, 14' leveling blade, EROPS, and light package. In poor to fair condition.

CAT 825B, s/n 43N497, ps trans, 42" wheels, 14' leveling blade, and EROPS. In poor condition with poor tires. (Parts-Missing Engine)

CAT 825B, s/n 43N383, Cat D343 dsl engine and ps trans, 42" wheels, 14' leveling blade, and ROPS canopy. In fair condition. (Parts Missing)

CAT 834, s/n 43E425, ps trans, 48" wheels, 14' leveling blade, and ROPS canopy. In poor condition. (Parts-Missing Engine)



CAT 825B

BACKHOE AND SKIP LOADERS



'95 CAT 426B 4x4

1995 CAT 426B, 4x4 Tractor Loader Extend-A-Hoe, s/n 6KL01529, Cat 3054 dsl engine and shuttle trans, gp loader bucket, 30" digging bucket, hydraulic beyond, EROPS, light package, 12.5/80-18 front and 19.5L-24 rear tires. In good condition with good tires. (Zero Hours on Rebuilt Engine)

Cat 426 Buckets: 12" • 16" • 18" • 18" Compactor Wheel

2003 JOHN DEERE 210LE, 4x4 Skip Loader, s/n T0210LE882033, John Deere 4 cyl dsl engine and shuttle trans, 7' box scraper with scarifiers, 4-in-1 clamshell bucket, sun canopy with roll bar, light package, 12x16.5 front and 16.9x24 rear tires. In good condition with good tires.

1998 JOHN DEERE 210LE, 4x4 Skip Loader, s/n T210LE845035, John Deere 4.5L dsl engine and shuttle trans, gp bucket with bolt-on cutting edge, 3-point hitch, 7'6" box scraper with scarifier teeth, canopy, light package, 12x16.5 front and 16.9x24 rear tires. In good condition with good tires.



JOHN DEERE 210LE 4x4

(21) UTILITY TRACTORS AND BELTED AG TRACTOR



'97 JOHN DEERE 8400

1997 JOHN DEERE 8400, 4x4, s/n RW8400P013007, John Deere 6 cyl (225HP) dsl engine and ps trans, 3-point hitch, PTO, drawbar, 4-spool hydraulic outlets, pocket-book weights, EROPS, ac, light package, dual rear wheels, 600/65R28 front and 710/70R38 rear tires. In good to very good condition with good to very good tires.



'91 JOHN DEERE 8760

1991 JOHN DEERE 8760, 4x4 Articulated, s/n RW8760H002979, John Deere 6 cyl (256HP) dsl engine and 24 speed ps trans, 3-spool hydraulic outlets, drawbar, EROPS, ac, light package, dual front and rear wheels, and 20.8R42 tires. In good condition with good tires.



JOHN DEERE 4960'S

1994 JOHN DEERE 4960, 4x4, s/n RW4960P009214, John Deere 6 cyl (200HP) dsl engine and ps trans, 3-spool hydraulic outlets, drawbar, ROPS canopy, ac, light package, dual rear wheels, 6.00-18.5R front and 18.4-42 rear tires. In good condition with good tires. (Tractor Rear Exchanged-(2) Serial Numbers)



JOHN DEERE 4955

1994 JOHN DEERE 4960, 4x4, s/n RW4960P008010, John Deere 6 cyl (200HP) dsl engine and shuttle trans, 3-point hitch, 3-spool hydraulic outlets, PTO, drawbar, EROPS with ac, light package, and 18.4R26 front and 18.4-42 rear tires. In good condition with fair to good tires.



JOHN DEERE 4955'S

1992 JOHN DEERE 4960, 4x4, s/n RW4960P003340, John Deere 6 cyl (200HP) dsl engine and ps trans, 3-point hitch, 3-spool hydraulic outlets, drawbar, EROPS, ac, light package, dual rear wheels, 8.4-26 front and 20.8-42 rear tires. In fair to good condition with fair tires.

1991 JOHN DEERE 4955, 4x4, s/n RW4955P007934, John Deere 6 cyl (202HP) dsl engine and ps trans, 3-point hitch, PTO, quick attach, 3-spool hydraulic outlet, pocket-book weights, EROPS, ac, light package, 14.9R30 front and 20.4-42 rear tires. In good condition with good tires.

1991 JOHN DEERE 4955, 4x4, s/n RW4955P007049, John Deere 6 cyl (202HP) dsl engine and ps trans, 3-spool hydraulic outlets, drawbar, EROPS, ac, light package, dual rear wheels, 18.4R26 front and 20.8R42 rear tires. In good condition with fair to good tires.

1990 JOHN DEERE 4955, 4x4, s/n RW4955P005304, John Deere 6 cyl (202HP) dsl engine and ps trans, PTO, 3-spool hydraulic outlets, pocketbook weights, EROPS, ac, light package, dual rear wheels, 16.9R28 front and 18R42 rear tires. In good condition with fair to good tires.

1990 JOHN DEERE 4955, 4x4, s/n RW4955P004892, John Deere 6 cyl (202HP) dsl engine and shuttle trans, 3-point hitch, PTO, (2) hydraulic couplers, drawbar, dual rear wheels, and 16.9-30 front and 18.4R42 rear tires. In good condition with good tires.



JOHN DEERE 7800

1993 JOHN DEERE 7800, 4x4, s/n RW7800P003190, John Deere 6 cyl (145HP) dsl engine and ps trans, 3-point hitch, PTO, 2-spool hydraulic outlets, drawbar, EROPS, ac, light package, dual rear wheels, 14.9R30 front and 18.4R42 rear tires. In good condition with fair to good tires.



JOHN DEERE 4850

JOHN DEERE 4850, 4x4, s/n RW4850P002609, John Deere 6 cyl (193HP) dsl engine and ps trans, 3-point hitch, PTO, 3-spool hydraulic outlets, drawbar, EROPS, ac, light package, dual rear wheels, 16.9-28 front and 18.4-42 rear tires. In good condition with fair to good tires.



JOHN DEERE 4450

1992 JOHN DEERE 4760, 4x4, s/n RW4760P001141, John Deere 6 cyl (175HP) dsl engine and ps trans, PTO, triple hydraulic hookup, EROPS, ac, dual rear wheels, and 18.4R26 front and 20.8R42 rear tires. In fair condition with fair to good tires. (Bad Trans)

1990 JOHN DEERE 4455, 4x4, s/n RW4455P005324, John Deere 6 cyl (156HP) dsl engine and shuttle trans, PTO, drawbar, ROPS canopy, light package, ac, and 16.9R28 front and 18.4R42 dual rear tires. In fair to good condition with fair to good tires. (No 3-Point Hitch)

JOHN DEERE 4440, s/n 4440H021113R, John Deere 6 cyl (130HP) dsl engine and ps trans, 3-point hitch, 3-spool hydraulic outlets, drawbar, 10.0x16 front and 18.4x28 rear tires. In fair condition with fair tires.

JOHN DEERE 5020, s/n T313R025787R, John Deere 6 cyl (135HP) dsl engine and shuttle trans, PTO, drawbar, EROPS, and 4R15 front and 24.5R32 rear tires. In fair condition with fair tires.

JOHN DEERE 5020, s/n T313R025730R, John Deere 6 cyl (135HP) dsl engine and shuttle trans, 3-point hitch, PTO, 2-valve hydraulic hook-up, EROPS, light package, and 14x16 front and 18.4x38 dual rear tires. In fair to good condition with fair to good tires.



CASE-IHC 3294

JOHN DEERE 700, s/n 4287, 6 cyl dsl engine and ps trans, drawbar, hydraulic outlets, ROPS canopy, and 11-15 front and 24.5-32 rear tires. In fair condition with fair tires. (No Turbo Motor)

CASE/INTERNATIONAL 3294, 4x4, s/n 9933685, 6 cyl (162HP) dsl engine and ps trans, 3-point hitch, PTO, (2) hydraulic hookups, and 16.9-28 front and 20.8-38 rear tires. In good condition with good tires.



CAT 65

STEIGER ST225 Bearcat II Articulated, s/n 3231, Cat 3208 dsl engine and ps trans, 3-point hitch, drawbar, EROPS, (2) valves, duals, and 23.1x30 tires. In fair condition with fair tires.

1988 CAT 65 Challenger Crawler, s/n 7YC00914, Cat 3306 dsl engine and ps trans, (4) hydraulic spools. In poor to fair condition with poor to fair tires.

PULL SCRAPER, DISC HARROWS, ROTOTILLERS, BOX SCRAPERS, AND MOWER



ROME PULL SCRAPER

ROME C14E105 Pull Type Scraper, s/n 29339, 17.5-25 tires. In good condition with good tires.

TRANSPORT DISCS: ROME 2-Gang/15' • (9)

ROME 2-Gang/10'

• **ROME 2-Gang/8'**

• **ARTS-WAY 1600**

4-Gang/14' • **HUTCH-**



TOW BEHIND DISCS

MASTER Tow Behind Disc Harrow (Parts Missing)

ROTOTILLERS; SCRAPERS; AND MOWER: FMC

Sidewinder 12' 3-Point Hitch

Rototiller, s/n 193317 • **EVERSMAN 21'** Rototiller, s/n

91648 (Parts) • **EVERSMAN 20'** Rototiller, s/n 9152214

(Parts) • **BEEGEE Tow Behind Box Scraper**, s/n 1PS18-

112, 18' box • **BEEGEE Tow Behind Box Scraper**, s/n

1DS18-120, 14' box • **BUSH HOG Trasher 14'** Mower.

TOW BEHIND DISCS

TOW BEHIND DISCS

MANURE SPREADERS AND WATER WAGON



BALZER 4200

2000 BALZER 4200 Vacuum Manure Spreader, s/n 4965-0600, Battoni Pagani hydraulic discharge pump, loading pump, and 28L26 tires. In very good condition with very good tires.

1999 BALZER 4200 Vacuum Manure Spreader, s/n 4706-1099, Battoni Pagani hydraulic load and unload pump and 23.1x26 tires. In very good condition with very good tires.

2000 BALZER 4200 Vacuum Manure Spreader, s/n 4791-00, 3" hydraulic suction/discharge pump and 23.1x26 tires. In good condition with good tires.

BETTER BILT 4250 Tow Behind Water Wagon, s/n 20179, hydraulic discharge pump, intake pump, and 23.1-26 tires. In very good condition with very good tires.



BETTERBILT 4250



1990 ARROW HJ1250R Hydro Hammer, s/n 350Z, John Deere cyl dsl engine and 4 speed trans, 4" breaker, side shift, 12x16.5 front and 8.75R10.5 rear tires. In fair condition with fair to good tires • **ARROW G400 Hydro Hammer**, s/n 4341, Perkins 6 cyl dsl engine and 4 speed trans, side shift, 4" hammer, 7.50x16 front and 6.00x16 rear tires. In good condition with good tires • **ROSCO Street Broom**, 4 cyl gas engine and hydrostatic trans, 80" broom and 15 tires. In fair condition with fair to good tires • **BRUCE Power Broom**, s/n 26549-R17KT, 4 cyl gas engine and manual trans, 7' broom and 225/75R15 tires. In poor to fair condition with poor to fair tires.

ARROW HJ1250R

HYDRO HAMMERS AND BROOMS

CRANES AND FORKLIFTS



GROVE STEVEDORE

GROVE Stevedore 4000, 4,000# Carry Deck Crane, s/n 25145, Onan 2 cyl gas engine and hydrostatic trans, 8'-18" 3-stage boom, 7' swingaway jib, and 7.50-10 tires. In good condition with good tires.

AUSTIN WESTERN 220, 8 Ton Rough Terrain Crane, s/n R-22-88-24, 6 cyl gas engine and shuttle trans, 2-stage mast, single hook, (4) hydraulic outriggers, single drum, crab steering, EROPS, light package, and 3.00-24 tires. In fair condition with fair to good tires.

PETTIBONE 25, 12.5 Ton Rough Terrain Crane, s/n 8610A2429, Detroit 4 cyl dsl engine and 3 speed trans, 3-section boom, 2-sheave hook block, (4) hydraulic outriggers, and 14-24 tires. In fair condition with fair tires.

BANTAM C-350, 9.5 Ton Crawler Crane, s/n 9816, Detroit 3 cyl dsl engine and chain drive, 26' basic lattice boom, single drum, 12' crawlers, and 24" smooth pads. In poor condition with poor undercarriage.

CLARK C-500-Y135PK, 14,350# Pneumatic Tired Forklift, s/n Y1015-587010B, 4 cyl dsl engine and shuttle trans, 2-stage mast with side shift, 48" forks, ROPS canopy, and light package. In good condition with good tires.

CAT T50D, 5,000# Forklift, s/n 8EB10548, 2-stage mast, side shift, and solid tires. In fair condition with fair tires.

HYSTER H25E, 2,500# Forklift, s/n D001D/11935X, propane engine, 2-stage mast. In fair condition with fair tires.



CLARK C500

FELLER BUNCHER AND CHIPPERS



CAT 227FB

1987 CAT 227FB Feller Buncher, s/n 10W00388, Cat 3208 dsl engine and hydrostatic trans, 36" saw head with rotating grapple and 28" SBG pads. In good condition with good undercarriage.

MORBARK 23 Tree Chipper,

s/n 23-008, Cummins 6 cyl dsl engine, 36" power infeed, Rototech grapple, 6' drum with discharge chute, 500 gallon fuel tank, and 10.00R15 tires. In fair condition with fair tires. (Meter Reads 1,780 Hours) (All Control Wiring Removed) (Serial Number Owner Supplied)



MORBARK 23

REXWORK Maxigrind 425G Portable Wood Chipper, s/n G40604, Cat 3306B dsl engine, 13'x5' tub grinder, 5'x18' discharge conveyor, grapple, enclosed cab, and 215/70R17.5 tires. In good condition with good tires.



REXWORK MAXIGRIND 425G

AIR COMPRESSOR, TRENCHER, PUMPS AND LIGHTS PLANTS



INGERSOLL RAND 185

1998 INGERSOLL-RAND P185WJD Portable Air Compressor, s/n 272362UAH221, JD 4 cyl dsl engine

• **1996 DITCH WITCH 1020H Walk-Behind Trencher**, s/n 1N1810 • **Single Axle Tilt Deck Equipment Trailer** • **DEUTZ 110, 8" Pump**, s/n F3L912 • **KLEIN 6" Water Pump**, s/n 524682, Ford dsl engine

• **KLEIN Hurricane 12, 12" Water Pump**, s/n 7313316, Ford 4 cyl dsl engine • **TSURUMI 8" Portable Water Pump**, Deutz 3 cyl dsl engine • **COLEMAN Light Plant**, Kubota 3 cyl dsl engine (Lights Removed) • **(3) MASTER LTD235 Light Plants** (poor)

FUEL/LUBE AND WATER TRUCKS



'94 MACK CH613

1994 MACK CH613 Tandem Axle Fuel/Lube Truck, Mack 350 dsl engine and Eaton Fuller 10 speed trans, 20' lube body, (6) 150 gallon lube tanks with Graco air operated pumps, (2) 100 gallon lube tanks with pumps, 1,000 gallon fuel tank with transfer pump, Honda 13HP air compressor, grease gun and tank, 48" sleeper cab, light package, and 11R24.5 tires. In good condition with good tires.

1993 MACK CH613 Tandem Axle Water Truck, Mack E7-350 dsl engine and 9 speed trans, 3,000 gallon poly water tank, Mega Corp spray head, PTO pump, 13' shopmade steel flatbed, and 11R22.5 tires. In good condition with good tires.

1979 MACK DMM685, 6x6 Water Truck, Mack 278 dsl engine and 6 speed trans, 4,000 gallon poly tank, front and rear spray heads, 4" pump, and 18-22.5 front and 11R22.5 rear tires. In good condition with good tires.

FORD F-800 Tandem Axle Fuel Truck, V-8 gas engine and 4 speed trans, Honda pump and 11.00x22.5 tires. (Poor-Parts)



'93 MACK CH613

TRUCK TRACTOR AND LOWBOY TRAILERS



'95 PETERBILT 379



'94 FREIGHTLINER



'98 TALBERT 40 TON

1998 TALBERT T401-5-SA-HRG-1-11, 40 Ton Quad Axle Lowboy Trailer,

24' well, 102" width, hydraulic detachable goose-neck, flip-up 4th axle, outriggers, chain dogs, and 255/70R22.5 tires. In good condition with good tires.

1997 FONTAINE TA50NGB, 50 Ton Quad Axle Lowboy Trailer, non-ground bearing, detachable gooseneck, 22' well, 102" width, air ride suspension, flip-up 4th rear axle, outriggers, chain dogs, and 225/70R22.5 tires. In good condition with good tires.

1997 TRAILBOSS Tandem Axle Tiltback Trailer, 9'6" upper deck, 6' transfer deck, 5' fixed deck, and 23'x102" tilt. In good condition with good tires.



FONTAINE 50 TON



'97 TRAILBOSS TILT BACK

MECHANICS TRUCKS



'08 KENWORTH T-300



'07 FORD F-550 4X4

hydraulic air compressor, ac, and 10R22.5 tires. In good condition with good tires.

2000 FORD F-650 Super Duty, Cummins 6 cyl dsl engine and 6 speed trans, Stahl 11' service body, Stahl 8000LX 3-stage 20' crane, with hydraulic outriggers, Honda air compressor, 16" work bumper with vise, and 10R22.5 tires. In good condition with good tires.

2000 FORD F-650 Super Duty, Cummins 5.9L dsl engine and 6 speed trans, STI 13' service body, Tiger 8000, 18' crane, s/n 1216-8, with hydraulic outriggers, 24" work bumper with vise, and 275/80R22.5 front and 11R22.5 rear tires. In fair to good condition with fair to good tires.

1999 FORD F-550 Super Duty, Powerstroke 7.3L dsl engine and 5 speed trans, IMT 3016 hydraulic boom, s/n 3016951146, hydraulic outriggers, Stahl 11' body with bumper vise, and 225/70R19.5 tires. In fair to good condition with good tires. (Reman Engine)

1989 FORD F-450, 7.3L dsl engine and 5 speed trans, 11' service body, IMT 3016, 5,100# 21"11" crane, hydraulic air compressor, and 235/85R16 tires. In fair condition with good tires.

1985 INTERNATIONAL 1900, International 7.3L dsl engine and 5 speed trans, 11' service body, Stahl 8000LX crane, 4' flatbed, fuel tanks, and 11R22.5 tires. In poor condition with poor tires. (Parts-Not Running)



'00 FORD F-650

(16) PICKUP TRUCKS



2006 FORD F-250XL Super Duty 4x4 Crew Cab, 5.4L gas engine and 6 speed trans, 7' bed, aluminum cross and side toolboxes, and 265/70R17 tires. In good condition with good tires.



FORD PICKUP TRUCK

FORD PICKUP TRUCKS

2006 FORD F-250XL Super Duty 4x4, 5.4L V-8 gas engine and automatic trans, aluminum cross box, 100 gallon fuel tank with pump, and 245/75R17 tires. In good condition with good tires.

2005 FORD F-250XL Super Duty 4x4 Extended Cab, V-10 gas engine and automatic trans, 8' bed with liner, 100 gallon aluminum tank with electric pump, aluminum cross box, and 245/70R17 tires. In good condition with good tires.



FORD PICKUP TRUCKS

2004 FORD F-250XL Super Duty, 5.4L gas engine and automatic trans, 8' bed and 235/85R16 tires. In good condition with good tires.

2004 FORD F-250XL Super Duty 4x4, 5.4L gas engine and automatic trans, tool boxes, fuel tank, and 235/85R16 tire. In good condition with good tires.



FORD PICKUP TRUCKS



2004 FORD F-250, 4x4, 5.4L gas engine and automatic trans, aluminum cross box, side boxes, 100 gallon fuel tank with pump, and 265/75R16 tires. In good condition with good tires.

2004 FORD F-250XL, 4x4 Super Duty, V-8 gas engine and automatic trans, aluminum cross box, fuel tank with pump, and 285/75R16 tires. In good condition with good tires.

FORD PICKUP TRUCKS

2003 FORD F-250XL Super Duty, 4x4, gas engine and automatic trans, 8' bed, steel fuel tank, aluminum cross box, and 285/75R16 tires. In fair condition with fair tires.

2003 FORD F-250XL, 4x4 Crew Cab, 5.4L gas engine and automatic trans, aluminum cross box, 100 gallon fuel tank with pump, and 265/75R16 tires. In good condition with good tires.

2003 FORD F-250XL Super Duty 4x4, 5.4L V-8 gas engine and automatic trans, aluminum cross box and side boxes, 100 gallon fuel tank with pump, and 265/75R16 tires. In good condition with good tires. (Trans Slips)

1995 FORD F-250XL Super Duty 4x4, Powerstroke dsl engine and 5 speed trans, 8' bed with liner, and 235/85R16 tires. In good condition with good tires.

2005 FORD F-150, 4x4 Extended Cab, Triton 5.4L gas engine and automatic trans, 6'6" bed, bed liner, aluminum cross box, power package, keyless entry, moon roof, and 275/60R18 tires. In good condition with good tires.

1999 FORD F-150, 4x4, Windsor 5.4L gas engine and 5 speed trans, 8' bed, ac, and 235/85R16 tires. In fair condition with good tires.

2000 FORD F-150, 6 cyl gas engine and 5 speed trans, ac, 8' bed, and 225/70R16 tires. In fair condition with fair tires.

1999 FORD F-150XL, 4x4 (Parts)

KNUCKLEBOOM, FLATBED, AND CAB/CHASSIS



'99 FREIGHTLINER CH213

1999 FREIGHTLINER CH213 Knuckleboom Truck, Cummins 370HP dsl engine and Eaton Fuller 10 speed trans, 16' flatbed, IMT rear mounted knuckleboom crane with hydraulic outriggers, Miller Trailerblazer welder/generator, Honda 2-stage air compressor, and 11R22.5 tires. In good condition with good tires.

1982 FORD 8000 Flatbed Truck, Cat 3208 dsl engine and 13 speed trans, Gorman Rupp 3" water pump and 11R22.5 tires. In fair condition with fair tires.

1999 FREIGHTLINER FLD80 Cab & Chassis, Cat 3126 dsl engine, 11R22.5 tires. In poor condition with poor tires. (Parts Only-Not Running)

DUMP, FLATBED, AND 5TH WHEEL TRAILERS



'99 CIRCLE R SS443

1999 CIRCLE R SS443 Tri-Axle Side Dump Trailer, spring suspension and 11R24.5 tires. In good condition with fair to good tires.

1979 LOAD KING 2030, 20 Cubic Yard Bottom Dump Trailer, 74,370# GVWR and 11R22.5 tires. In fair to good condition with fair to good tires.



LOAD KING 2030'S

1981 LOAD KING 2030, 20 Cubic Yard Bottom Dump Trailer, 74,880# GVW and 11R22.5 tires. In poor to fair condition with good tires.

1979 LOAD KING 2030, 20 Cubic Yard Bottom Dump Trailer, 74,370# GVWR and 11R24.5 tires. In fair to good condition with fair to good tires.

2002 ELITE Tandem Axle 5th Wheel Trailer, 20'x102" deck, 5' beavertail, 5' ramps, aluminum diamond plate tool box, and 235/85R16 tires. In good condition with good tires.

Shopmade Tri-Axle Flatbed Gooseneck Trailer, 16'x8' deck, 4' beavertail, 4' ramps, and 235/85R16 tires. In good condition with good tires.

TRAVEL, VAN/STORAGE AND OFFICE TRAILERS



'97 FLEETWOOD PROWLER

1997 FLEETWOOD Prowler Tandem Axle Travel Trailer
 • **1984 MARATHON 28RLR**, 28' 5th Wheel Travel Trailer
 • **1972 TRAILMOBILE A71A1AA-N**, 24' Single Axle Van Trailer, 5,000 gallon 3-compartment oil tank • **AMERICAN 40' Storage Trailer** • **1960 FRUEHAUF 40' Van Trailer** (No Tires Or Axles) • Shopmade Tandem Axle Van Trailer • **1970 TRAILMOBILE**



'84 MARATHON

A71A-1AAD, 25' Single Axle Van Trailer • **1974 BROWN 40' Trailer** • 16'x18' Office Trailer

SHOP EQUIPMENT



SHOP EQUIPMENT



SHOP EQUIPMENT



SHOP EQUIPMENT

CLAUSING Nardini ND1560E Lathe, (2) additional chucks, miscellaneous tooling, miscellaneous carriage rests, 2" throat inside diameter, and Holdridge radii cutter. In very good condition. • **CLIMAX** 1149 Portable Hydraulic Boring Machine, boring bars and assorted tooling • **M-081 LUCAS** 42 Boring Mill, 3-phase 440 volt electric motor, misc tooling • **BRIDGEPORT** Vertical Mill, 220 volt, 3-phase, variable high/low spindle speeds, Mitutoya digital boring depth gauge measuring at 10000th of an inch, and table vise • **BRIDGEPORT** Series II Vertical Mill, 2HP, 3-phase, variable high/low spindle speed and table vise • **BROWN & SHARPE** 2LB Surface Grinder, 3-phase • **FANCO** H80, 80 Ton H-Frame Press, hydraulic powered. • **VICTORY** Pattern Torch (Pattern Rails Missing) • **VICTORY** Oxygen/Acetylene Torch Set, cart, gauges, hoses and tip • (2) **VICTORY** Oxygen/Acetylene Torch Sets, hoses and gauges • **MILLER** Dimension 400 Arc Welder, 3-phase good • **HOBERT** Tigwave 250 Tig Welder, cart mounted • **MILLER** Dialarc HF Tig Welder, 3-phase • **MILLER** Millermatic 250 Arc Welder, cart mounted • **HOBERT** Champion 16, 8,000 Watt Welder/Generator, Onan 2 cyl gas engine • **MANHATTAN** 951220 Table Mounted Drill Press, 1/2HP • Pedestal Belt Sander/Wire Wheel, 220 volt, 3" sanding belt • **DELTA** 23-980, 10" Bench Grinder, 1HP, 4'x3' bench. • **MILWAUKEE** 8" Bench Grinder, 3/4HP • **BLACK & DECKER** 8" Bench Grinder, 3/4HP. • **INTERGRAM** AG12F Drill Press, 3/4HP • Shopmade 12,000# Rolling A-Frame Gantry Crane, Coffing 3 ton electric chain hoist, Harrington 3 ton electric chain hoist, 20' width, 13'3" height, and 24x5.5 tires • Shopmade Rolling A-Frame Gantry Crane, CM 3 ton electric chain hoist, 19'6" width, 13' height, and 8.75R16.5 tires • **YALE** 3 Ton Chain Hoist • **BUDGET** 1 Ton Chain Hoist • **BUDGET** 1/2 Ton Chain Hoist • **COFFING** 1/2 Ton Chain Hoist • **DAYTON** 1 Ton Chain Hoist • CM 2 Ton Chain Hoist • CM 1 Ton Chain Hoist • 8'x3' Steel Rolling Work Bench, vise and PowerFist 10 ton manual hydraulic press • 5'x2' Steel Work Bench, shopmade jib with 550# ratchet chain hoist • 8'x8'x6" Welding Bench, vise and Fanco 3-1/2R ratchet press • 12'x3' Work Bench with Wilton vise • 66" x36" Steel Rolling Work Table with vise. • (2) 72" x36" Steel Rolling Work Tables • 60" x24" Steel Rolling Work Table with parts bins • 72" x36" Steel Rolling Work Table with parts bins • 48" x24" Steel Rolling Work Table with parts shelves • 45" x31" Steel Rolling Work Table with parts shelves • 96" x24" Steel Rolling Work Table with parts shelves • 67" x40" Steel Rolling Work Table • (2) Angle Grinders • (5) **CHICAGO PNEUMATIC** 1" Impact Guns • **NAPA** 1" Impact Gun • **AS-TRO** 1" Impact Gun • Assorted Impact Sockets, 15/16" to 4-5/8" • **NAPA** Balkamp 30 Gallon Electric Parts Washer • Shopmade 100 Gallon Parts Washer, mounted on wheeled cart



SHOP EQUIPMENT



SHOP EQUIPMENT