

# ABSOLUTE AUCTION

## COMPLETE LIQUIDATION

**WEDNESDAY,  
APRIL 25, 2012  
9:00AM**



**Dallastown, Pennsylvania  
(York, PA Area)**

'05 & '98 CAT 953C



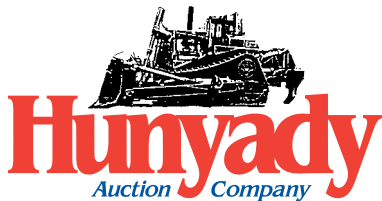
(3) OF (5) CASE 4X4 EXTEND-A-HOES



'03 IR PF875L



(2) '03 STERLING M7500

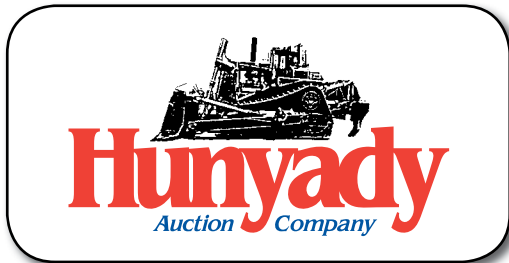


1440 COWPATH RD. • HATFIELD, PA 19440  
215/361-9099 • Fax: 215/361-9212  
[www.hunyady.com](http://www.hunyady.com)

PRE-SORTED  
FIRST CLASS MAIL  
US POSTAGE  
**PAID**  
HAVERTOWN, PA  
PERMIT #45



# NEVER A BUYER'S PREMIUM!



**Notice:** Following (66) successful years in the construction business, owners Eugene and Jeffrey Deller have decided to completely liquidate all equipment assets of C. Joseph Deller and Sons, Inc. All items will sell at absolute auction regardless of price and without minimums, reserves, or buyer's premiums!

**Location:** The auction will be held at the Deller facility at 30 South Park Street, Dallastown, PA 17313

**Sale Day Parking:** The sale day parking area is located less than (1) Mile from sale site at the Dallastown Rescue Fire Co. #1 facility at 50 North School Place, Dallastown, PA 17313. Directions To Sale Day Parking: Traveling Interstate 83 Northbound-Exit #14 (Leader Heights/PA Route 182) Turn right onto Route 182 East and proceed (1.1) miles to PA Route 74 and turn right onto Route 74 South. Continue (2.2) miles to North School Place and turn right. Proceed straight to parking area. Traveling Interstate 83 Southbound: Exit #16A (Queens Street/PA Route 74 South) Proceed on route 74 South (3.8) miles to North School Place and turn right. Continue straight to parking area. Shuttle Buses running continuously.

**Sale Site Directions: FROM INTERSTATE 83 NORTHBOUND:** Exit #14 (Leader Heights/PA Route 182) Turn right onto Route 182 East and proceed (1.1) miles to PA Route 74. Turn right onto PA Route 74 South and proceed (2.9) miles to Park Street, turn right and proceed (0.1) miles to sale site on right.

**FROM INTERSTATE 83 SOUTHBOUND:** Exit #16A (Queens Street/PA Route 74 South) Proceed on PA Route 74 South (4.5) miles to Park Street and turn right. Proceed (0.1) miles to sale site on right.

**Terms:** Payment in full is required on sale day by cash, certified funds, or check with a bank letter of guarantee. Sample letter of guarantee: "We hereby guarantee the payment of our customer \_\_\_\_\_ written on his account up to \_\_\_\_\_ dollars for purchases at your auction sale on April 25, 2012." All guaranteed checks should be made payable to Hunyady Auction Co.

**Sales Tax:** Since this contractor is selling items not normally sold in the course of his business, the Commonwealth of Pennsylvania considers this an isolated sale and does not require the auction company to collect sales tax.

**Financing:** Financing is available, please contact Susan (215) 361-9099 at the auction company for details.

**Inspection:** Items will be available for inspection beginning one week prior to the auction from 8:00AM to 5:00PM. The site will be closed Saturday and Sunday, April 21st and 22nd.

**Removal:** After complete payment, all sale items may be removed on sale day as long as the removal activity is not disruptive to the sale and only until 5:00 p.m. Items may also be removed Thursday and Friday, April 26th and 27th and Monday thru Wednesday, April 30th thru May 2nd, from 8:00 a.m. to 5:00 p.m. All items must be removed no later than Wednesday, May 2, 2012 at 5:00 p.m.

**Airport Information:** Private Aviation is accepted at York Airport (KTHV) 5,188'x100' (717) 792-5566 Approximately (17) miles from auction site • Commercial Aviation is accepted at Harrisburg International Airport. Approximately (1) hour from auction site.

**Motel Information:** The following hotels are located off of Interstate 83: (Exit 16) Country Inn & Suites By Carlson, 245 St. Charles Way, York, PA 17402 (717) 747-5833 • (Exit #14) Holiday Inn Express, 140 Leader Heights Road, York, PA 17403 (717) 741-1000 • Hampton Inn, 1550 Mt. Zion Road, York, PA 17402

**Sale Site Phone (Beginning Monday, April 16th): (717) 244-3725 • Sale Site Fax: (888) 859-8958**

### SNOW MAINTENANCE EQUIPMENT AND TIRES

8' V-Box Spreader, gas powered • **BUYERS** Salt Dog 8' Stainless Steel Hydraulic Tailgate Spreader • **FISHER** Speed Caster Bumper Hitch Mounted Rotary Spreader • **MTD** 28" Snow Thrower, s/n 11160B70398, electric start gas, heated handgrip • (15) 22.5x20 Truck Tires • Assorted Equipment Tires • Light Truck Tires • Tire Chains

### CONTRACTORS TOOLS

**MIKASA/MULTIQUIP** Vibratory Plate Compactor, 18" plate, with water • Electric Mortar Mixer • **STONE** Plate Compactor, with water • **STONE** Foot Compactor • Plate Compactor • **STIHL** TS360 Demo Saw • (2) **STIHL** MS440 Chain Saws • (2) **STIHL** 026 and 018 Chain Saws • **POULAN** 25 Chain Saw • (2) **STIHL** Weed Wackers and Brush Cutter • Generator • **STIHL** TS400 Demo Saw with cart • 2" Submersible Pump • (4) Wheelbarrows • 250 Gallon Poly Tank • (5) Gas Mowers – Push • (6) Truck Side Boxes • Fuel Tank with 12V pump • Rotary and drop Spreaders • Asphalt Rakes, Shovels, and Lute • **SPECTRA PHYSICS** LL300 Rotary Laser Level • **BERGER** 203BU Transit with tripod and grade pole • **DEWALT** Circular Saw • **DEWALT** Cordless Sawzall and Drill, with charger • Chains and Binders



### SHOP TOOLS AND EQUIPMENT

**MILLER** TB300/200 Arc Welder • **RAMTEQ** 2000PSI Electric Pressure Washer, with heat • (2) 275 Gallon Oil Tanks, 3/4 full, 15W40 and hydraulic • Shop Air Compressor • Parts Washer • **CRAFTSMAN** Drill Press • Fiberglass Step Ladder • **MASTER** 55,000BTU Kerosene Heater • (2) Floor Jacks • 6/12 Volt Battery Charger • Oxygen/Acetylene Torch Set, with cart • Fireproof Cabinet • Assorted Parts

### MISCELLANEOUS MATERIAL

(60 sq) (30 round) 8x8 Glass Block and Radius Block • (14) 10'-17' 7"x10" Oak Hand Hewn Beams • Chestnut Planking • ABS Pipe • Block • PVC Pipe and Fittings



## CRAWLER LOADERS

**2005 CATERPILLAR Model 953C Crawler Loader**, s/n BBX02012, Cat 3126 diesel and hydrostatic trans, general purpose loader bucket with teeth, enclosed ROPS cab with air conditioning, and 15" DBG pads. In good condition with very good undercarriage. **(Complete Undercarriage Group Replaced Less Than 200 Hours)**

**1998 CATERPILLAR Model 953C Crawler Loader**, s/n 2ZN00911, Cat 3116 diesel and hydrostatic trans, general purpose loader bucket with teeth, ROPS canopy, and 15" DBG pads. In good condition with poor undercarriage.

**1991 CASE Model 1155E Crawler Loader**, s/n JAK0009815, Case diesel and powershift trans, general purpose loader bucket with teeth, ROPS canopy, and 16" DBG pads. In fair to good condition with fair to poor undercarriage.



05 CAT 953C



98 CAT 953C

**1991 CASE Model 1155E Crawler Loader**, s/n JAK0009852, Case diesel and powershift trans, general purpose loader bucket with teeth, enclosed ROPS cab with heat, and 16" DBG pads. In fair to good condition with fair undercarriage.



(2) 91 CASE 1155E

## 4X4 TRACTOR LOADER EXTEND-A-HOES AND ATTACHMENTS

**2002 CASE Model 580M, 4x4 Tractor Loader Extend-A-Hoe**, s/n JJG0312897, Case diesel and shuttle trans, GP bucket, 36" digging bucket, enclosed ROPS cab, 12-16.5 front and 19.5L24 rear tires. In good condition with fair to good tires.



99 CASE 580 SUPER L 4X4 EXTEND-A-HOE

**1999 CASE Model 580 Super L, 4x4 Tractor Loader Extend-A-Hoe**, s/n JJG0273781, Case diesel and shuttle trans, GP bucket, 24" digging bucket, rear hydraulic plumbing, enclosed ROPS cab, 12-16.5 front and 19.5L24 rear tires. In good condition with good tires.



02 CASE 580M 4X4 EXTEND-A-HOE

**1997 CASE Model 580 Super L, 4x4 Tractor Loader Extend-A-Hoe**, s/n JJG0202344, Case diesel and shuttle trans, GP bucket, 24" digging bucket, EROPS, 12-16.5 front and 19.5L24 rear tires. In good condition with good to very good tires.



94 CASE 580SK 4X4 EXTEND-A-HOE

**1994 CASE Model 580SK, 4x4 Tractor Loader Extend-A-Hoe**, s/n JJG0178605, Case diesel and shuttle trans, GP bucket, 24" digging bucket, enclosed ROPS cab, 12-16.5 front and 17.5L24 rear tires. In good condition with fair to good tires.



97 CASE 580 SUPER L 4X4 EXTEND-A-HOE

**1992 CASE Model 590, 4x4 Tractor Loader Extend-A-Hoe**, s/n JJG0206413, Case diesel and shuttle trans, GP bucket, 24" digging bucket, ROPS canopy, 12-16.5 front and 19.5-24 rear tires. In fair to good condition with good tires.

**Attachments:** (2) 12" and 36" digging; 12" thumb; 42" bolt-on forks  
**STANLEY MB-5 Hydraulic Demo Hammer**



92 CASE 590 4X4 EXTEND-A-HOE

## CRAWLER PAVER

**2003 INGERSOLL-RAND/BLAW-KNOX Model PF875L Crawler Paver**, s/n 120241-CFN, Kubota 3.3L diesel and hydrostatic trans, Liberty 8'-15' vibratory, heated, full matt screed, wash down system and hose, and 12" steel pads. In good condition with good undercarriage.



03 IR PF875L

## VIBRATORY ROLLERS AND TACK TRAILER

**2001 INGERSOLL-RAND Model DD24 Tandem Vibratory Roller**, s/n 167603, Kubota diesel and hydrostatic trans, 49" smooth drums, spray system, and ROPS post. In good condition.

**1997 STONE Model Wolfpac 3100 Tandem Vibratory Roller**, s/n 2497035, Honda 18HP gas and hydrostatic trans, 35" smooth drums, spray system. In good condition.

**1986 BOMAG Model BW120AD Tandem Vibratory Roller**, s/n 17C124956, Deutz diesel and hydrostatic trans, 47" smooth drums and spray system. In good condition.

**ROSCO Model Deluxe III Roll Pac Roller**, s/n 37893, Kohler 15HP gas and hydrostatic trans, 33" smooth rear drum, 28" split front drum, and spray system. In good condition.

**INGRAM 6-8 Ton 3-Wheel Roller**, s/n

411689C40, 4 cylinder gas and Funk Revers-O-Matic trans, 40" split front drum, 18" rear steel wheels, and spray system. In good condition.

**2001 MARATHON Model KEB170 Single Axle Tack Trailer**, 170 gallon capacity, propane heat, 3,500GVWR, and 225/75R15 tires. In good condition with very good tires.



01 MARATHON KEB170



01 IR DD24



97 STONE WOLF PAC 3100

## ROAD MAINTAINERS

**HUBER Model M650 Road Maintainer**, s/n CM3269, Ford diesel and Fuller 5 speed trans, 9' all hydraulic moldboard, 6' front knockdown blade, 7.50-16 front and 18.4-26 rear tires. In good condition with very good rear and good front tires.

**HUBER Road Maintainer**, s/n CM3529, Ford gas and Fuller 5 speed trans, 9' all hydraulic moldboard, 6' front knockdown blade, 7.50-16 front and 13.6-38 rear tires. In fair condition with fair tires.

**HUBER Road Maintainer**, s/n CM3597, Ford gas and Fuller 5 speed trans, 9' all hydraulic moldboard, 6' front knockdown blade, 7.50-16 front and 13.6x38 rear tires. In fair condition with fair tires.



(1) OF (3) HUBER MAINTAINERS

## SKID STEER LOADER, BROOM TRACTOR, AND FARM TRACTOR AND ATTACHMENTS

**1998 CASE Model 1840 Skid Steer Loader**, s/n JAF0222428, Case diesel and hydrostatic trans, 62" GP bucket, auxiliary hydraulics, and 10-16.5 tires. In good condition with very good tires.

**FORD Model 2000 Utility/Broom Tractor**, s/n Unknown, 4 cylinder gas and direct drive trans, Sweepster 6' rear broom, 3-point hitch, PTO, 6.50x16 front and 12.4-28 rear tires. In fair to good condition with good tires.

**FORD Model 8N Farm Tractor**, s/n Unknown, Ford 4 cylinder gas and 4 speed trans, 3-point hitch, PTO, 6.00-16 front and 11.2-28 rear tires. In good condition with very good tires.

**SWEEPSTER HB60, 60" Hopper Broom**, with gutter broom (skid steer)



98 CASE 1840



FORD 8N

## DUMP TRUCKS



**2003 STERLING Model M7500 Acterra Single Axle Dump Truck**, Cat 3126, 275HP diesel and Eaton Fuller Roadranger 9 speed trans, Thiele 10'6" steel dump body with 3 chutes, 21,000# rear axle and 12,000# front axle, central hydraulic system, tow package with air, spring suspension, air brakes, cruise control, air conditioning, and 11R22.5 tires. In good condition with good tires.

**'03 STERLING M7500**



**'03 STERLING M7500 W/PLOW**

**2003 STERLING Model M7500 Acterra Single Axle Dump Truck**, Cat 3126, 275HP diesel and Eaton Fuller Roadranger 9 speed trans, Thiele 10'6" steel dump body, Good Roads 10' hydraulic angle snow plow, 21,000# rear axle and 12,000# front axle, tow package with air, spring suspension, air brakes, cruise control, air conditioning, and 11R22.5 tires. In good condition with good tires.

**1991 FORD Model L8000 Tandem Axle Dump Truck**, Ford 7.8L, 270HP (reman) diesel and Roadranger RT-760 8LL 10 speed trans, J&J 15' steel dump body with single chute, spring and beam suspension, exhaust brake, and 11R22.5 tires. In good condition with fair to good tires.



**'91 FORD L8000**

**1982 FORD Model 8000 Tandem Axle Dump Truck**, Cat 3208 (reman) diesel and Roadranger RT6613, 13 speed trans, 12'6" steel dump body with 14" asphalt apron, 44,000# rears and 16,000# front axle, spring beam suspension, 315/80R22.5 front and 10.00R20 rear tires. In fair to good condition with good tires.



**'82 FORD 8000**

**1979 FORD Model L9000 Tandem Axle Dump Truck**, Cummins Big Cam model FD290BCI diesel and Fuller Roadranger RTO-958LL 10 speed trans, J&J 16' steel dump body with 2-way gate, 44,000# rears and 18,000# front axle, tow package with air, spring beam suspension, 10.00R20 front and 11R22.5 rear tires. In fair to good condition with good tires.

**1993 FORD Model F-800 Single Axle Dump Truck**, Cummins/Ford 8.3L diesel and 5 speed trans with 2 speed rear, 10' steel dump body with single chute and asphalt apron, Good Roads 10' hydraulic angle snow plow, spring suspension, and 11R22.5 tires. In good condition with good tires.



**'93 FORD F-800**

**1983 FORD Model F-700 Single Axle Dump Truck**, 370 CI, V-8 gas and 5 speed trans with 2 speed rear, 9' steel dump body with single chute, and 10.00-20 tires. In fair to good condition with good tires.

**1980 FORD Model 8000 Single Axle Dump Truck**, Cat 3208 diesel (reman) and 5 speed trans, 9' steel dump body with single chute, tow package with air, air brakes, and 11R22.5 tires. In fair to good condition with good tires.

**1971 FORD Model F-800 Single Axle Dump Truck**, V-8 gas and 5 speed trans with 2 speed rear, 10' steel dump body with single chute, tow package with air, spring suspension, 11R22.5 front and 10.00-20 rear tires. In fair to good condition with very good tires.

**1978 FORD Single Axle Dump Truck**, Ford V-8 gas and 5 speed trans with 2 speed rear, 9' steel dump body with single chute, spring suspension, and 10.00x20 tires. In fair to good condition with very good tires.

## FLATBED AND PICKUP TRUCKS

**2001 FORD Model F-350 XL Super Duty 4x4 Flatbed Truck**, Powerstroke 7.3L diesel and 6 speed trans, Fisher 9' Minute Mount snowplow, 9'6" wooden flatbed with side boxes, cross box, dual rear wheels, tow package, and 235/85R16 tires. In good condition with very good tires.



**'01 FORD F-350 XL 4X4**

**1986 FORD Model F-350 Flatbed Truck**, 5.8L, V-8 gas and 4 speed trans, 9' flatbed with wooden stake sides, dual rear wheels, tow package with electric, and 235/85R16 tires.



**'01 FORD F-150 XLT 4X4**

**2001 FORD Model F-150 XLT, 4x4 Quad Cab Pickup Truck**, Triton 5.4L, V-8 gas and automatic trans, Fisher Minute Mount 7'6" snow plow, 6'6" bed, 100 gallon fuel tank with electric pump, cross toolbox, tow package, electric windows, locks, and mirrors, cruise control, air conditioning, and 245/75R16 tires. In good condition with fair to good tires.

**2001 FORD Model Ranger XLT, 4x4 Quad Cab Pickup Truck**, 4.0L, 6 cylinder gas and automatic trans, 6' bed, sliding rear window, power windows, locks, and mirrors, running boards, cruise control, air conditioning, and 245/70R16 tires. In good condition with good tires.



**'01 FORD RANGER XLT 4X4**

**1995 FORD Model F-150 XLT, 4x4 Extended Cab Pickup Truck**, 5.2L, V-8 gas and automatic trans, Fisher Minute Mount 7'6" snowplow, 7' bed, 100 gallon fuel tank with 12V electric pump, cross toolbox, dual fuel tanks, power windows and locks, cruise control, air conditioning, and 235/75R15 tires. In good condition with very good tires.

**1994 FORD Model F-150 XLT, 4x4 Pickup Truck**, 5.0L gas and automatic trans, 7' bed, cruise control, air conditioning, and 235/75R15 tires. In fair to good condition with good tires.

**1989 FORD Model F-150 Custom 4x4 Pickup Truck**, 4.9L, 6 cylinder gas and 4 speed trans, 7' bed, cross toolbox, and 235/75R15 tires. In fair to good condition with fair to good tires.

**1984 FORD Model F-150 Pickup Truck**, 4.9L, 6 cylinder gas and 4 speed trans, 8' bed and 235/75R15 tires. In fair condition with good tires.

## TAG-A-LONG TRAILERS



**'01 CUSTOM 15 TON**

**2001 CUSTOM Model 15T262ADLP, 15 Ton Tandem Axle Tag-A-Long Trailer**, 20'x8' load deck with 6' beavertail and ramps, anti-lock brake system, air brakes, max load 22,500#, 31,200# GVWR, and 215/75R17.5 tires. In good condition with good tires.

**1971 GENERAL 18 Ton Tandem Axle Tag-A-Long Trailer**, 17'x8' level deck with 5' beavertail and ramps, air brakes, chain dogs, and 8.25-15 tires. In fair to good condition with good tires.

**1973 GENERAL 18 Ton Tandem Axle Tag-A-Long Trailer**, 17'x8' deck with 5' beavertail with ramps, air brakes, chain dogs, and 8.25-15 tires. In good condition with very good tires.

**1999 TOWMASTER Model QT-10DD, 5 Ton Tag-A-Long Trailer**, 16'6"x6'10" load deck with 5'6" ramps, electric brakes, chain dogs, and 225/75R15 tires. In good condition with good to very good tires.



**'71 & '73 GENERAL 18 TON**