

1440 COWPATH RD. • HATFIELD, PA 19440
 215/361-9099 • Fax: 215/361-9212
 www.hunyady.com



JLG 800AJ AND 4394RT (LOW HOUR)



MACK CL713 DUMPS (LOW MILEAGE)

PRE-SORTED
 FIRST CLASS MAIL
 US POSTAGE
PAID
 UPPER DARBY, PA
 PERMIT #45



CAT 320CL, 330BL, AND 330L



LARGE **2-DAY ABSOLUTE AUCTION**
VIRTUAL, LIVE BROADCAST
COMPLETE LIQUIDATION



TUESDAY & WEDNESDAY,
JULY 26 & 27, 2022
9:00 AM
Kenvil, New Jersey

CAT D6R, D5M,
 AND D3G (LOW HOUR)



Notice: Petillo Enterprises, a 106 year old, 3rd generation site development company has specialized in all facets of commercial and industrial development, from excavation to utility installation to the final building construction. Mr. Ronald Petillo, owner of Petillo Enterprises, has decided to completely liquidate his construction division and concentrate on his real estate holdings. All equipment in this auction is owned by Petillo Enterprises and will positively sell to the highest bidder without minimums or reserves.

Auctioneer's Note: This is a very unique opportunity to purchase extremely low hour equipment and trucks at Absolute Auction. Almost all equipment has been purchased new by Petillo Enterprises and the hours and mileages represented are actual and testament to the company's commitment to maintenance. We are proud to represent this fine spread of equipment for the Petillo family. Please plan to attend this single-seller Absolute Auction.

Special Note: The 2-Day Auction format is detailed below:

Day 1: Major Equipment, Trucks, Trailers, Equipment Attachments, Diesel Fuel and Fuel Storage Tanks

Day 2: New and Used Contractor and Shop Tools and Equipment To Include: Masonry, Sewer/Water Utility, Pumps, Generators, Welders, Compactors, Hydraulic Hose Station, OTC Master Puller Set, Survey Instruments, Large Quantity Scaffolding, Rigging, Pallet Racking, (25) 8'x20' Sea Containers (Like New), Tires and Related Equipment and Truck Parts, Plus Much More!

Location: 47 North Dell Avenue, Kenvil, New Jersey 07847 (Please Note: There will be NO LIVE BIDDING onsite)

LIVE, VIRTUAL AUCTION: This auction is being conducted via LIVE, VIRTUAL ONLINE ONLY. There will be NO LIVE BIDDING FROM THE SITE. ADDITIONALLY, there will be NO PAYMENTS accepted at the auction site! Payment must be paid either by wire transfer or credit card.

Terms: Complete payment immediately after receipt of invoice by wire transfer or credit card only. Credit card payments will be charged a 3% processing fee.

Financing: Financing is available, please contact Susan (215) 361-9099 at the auction company for details.

Online Bidding: Live internet bidding will be provided by Proxibid. Proxibid will charge an Internet Service Provider Fee of 5% to the successful internet bidder for items over \$10,000 and 10% for items \$10,000 and under, for each lot purchased on-line. All bidders are required to register to bid through Proxibid.

Sales Tax: Pursuant to Publication ANJ-3, the State of New Jersey considers this an isolated/casual sale and therefore no sales tax will be charged.

Inspection: Items will be available for inspection beginning Tuesday, July 17th from 8:00am until 4:00pm and continuing thru auction dates. The site will be closed Saturday and Sunday, July 23rd and 24th.

Removal: After complete payment, items may be removed sale day and continuing weekdays thru Wednesday, August 3rd from 8:00am until 4:00pm. Auction site will be open for pickup on Saturday from 9:00am until 3:00pm and Sunday 10:00am until 2:00pm. All items must be removed by Wednesday, August 3, 2022 at 4:00pm.

Sale Site Phone: (800) Bid-N-Buy • Sale Site Fax: (888) 859-8958

STACKABLE BLOCK, PIPE, AND BUILDING MATERIALS – DAY 2

(85+/-) Stackable 1 Cubic Yard Concrete Blocks, with lifting eyes (6'x2'x2') • (10) 1 Cubic Yard Stackable Block Concrete Molds (Very Good Condition) • Concrete Curing Blankets and RC70 Asphalt; Rubber Roof Coating • Concrete Masonry Finishing Tools • (14) 15" x20' ADS Perforated Corrugated Drain Pipe • (11) 8" x20' Perforated Corrugated Drain Pipe • Tees, Couplers, etc • 4" Corrugated Flexible Drain Pipe • PVC – SDR35 and SCHD 40, Conduit • Water: brass and copper vales, copper pipe fittings • Electrical: switches, receptacles, junction boxes • Cast Iron Manhole Lids, Risers, and Storm Drains • Landscape and Digging Tools: shovels, brick barrows, copper flashing • Rolls of Propex Fabric; Grass Matting • (2 Pallets) Silt Fence • Commercial Lighting Standards and Lamps • Chain Link Fencing Hardware, Barbed Wire, and Fence Posts • Flagstone • Brick and Pavers, Cinder Block • Safety Barrels and Weights, Safety Cones, Plastic Barricades, Road Signs and Stands • Rain Suits and Slush Boots

OFFICE EQUIPMENT – DAY 2

RICOH Aficio 240W Blueprint Copier/Printer • Drafting Table and Stool • Desk, with return and (2) 2-drawer lateral files • (8) 4-Drawer Lateral File Cabinets • (2) 4-Drawer Lateral Files

LARGE

**2-DAY ABSOLUTE AUCTION
VIRTUAL, LIVE BROADCAST
COMPLETE LIQUIDATION**



**TUESDAY & WEDNESDAY,
JULY 26 & 27, 2022 - 9:00 AM
Kenvil, New Jersey**

LARGE 2-DAY ABSOLUTE AUCTION

CRAWLER TRACTORS

2005 CATERPILLAR D6R XL Series II, s/n AAX01161, Cat C-9 diesel engine and powershift transmission, semi-U blade with tilt, differential steering, rear counterweight, EROPS with ac, and 24" SBG pads. In excellent condition with excellent undercarriage. (Meter Reads 0,054 Hours)



'05 CAT D6R XL SERIES II (54 HOURS)



'97 CAT D5M XL (167 HOURS)

2005 CATERPILLAR D3G XL, s/n JMH01371, Cat 3046 diesel engine and hydrostatic transmission, 6-way straight blade, EROPS with ac, and 16" SBG pads. In excellent condition with excellent undercarriage. (Meter Reads 0,025 Hours)



'05 CAT D3G XL (25 HOURS)



'86 KOMATSU D155A (1,543 HOURS)

1992 KOMATSU D68E-1, s/n 01246, Cummins diesel engine and powershift transmission, straight blade with tilt drawbar, ROPS canopy, and 24" SBG pads. In good condition with good undercarriage. (Meter Reads 4,938 Hours)



'92 KOMATSU D68E-1



'79 KOMATSU D65E-6

1980 KOMATSU D31-16, s/n 28171, diesel engine and powershift transmission, 6-way straight blade, 3rd valve, tow hitch, ROPS canopy, and 16" SBG pads. In good to very good condition with very good undercarriage. (Meter Reads 3,128 Hours)



'80 KOMATSU D31-16

HYDRAULIC EXCAVATORS AND ATTACHMENTS

2004 CATERPILLAR 320CL, s/n PAB01552, Cat 3066 diesel engine, 9'6" dipper stick with Cat hydraulic coupler, auxiliary hydraulics, Cat 48" digging bucket, pattern changer, EROPS with front demolition screen and ac, and 31.5 TBG pads. In very good condition with very good undercarriage. (Meter Reads 0,712 Hours)



'04 CAT 320CL (712 HOURS)



'99 CAT 330BL

1995 CATERPILLAR 330L, s/n 5TM01490, Cat 3306B diesel engine, 10'8" dipper stick with JRB hydraulic coupler, Geith 54" digging bucket, stiff arm bracket, EROPS with front demolition screen, and 33.5" TBG pads. In good condition with good undercarriage. (Meter Reads 5,473 Hours)



'95 CAT 330L



'96 KUBOTA KX101 (570 HOURS)

1996 KUBOTA KX101 Mini, s/n 12170, Kubota diesel engine, 5'3" dipper stick, swing boom, 18" digging bucket, auxiliary hydraulics, 60" backfill blade, pattern changer, EROPS, and rubber tracks. In good condition with good tracks. (Meter Reads 0,570 Hours) (No Glass in Cab)

Excavator Attachments: CATERPILLAR H140S Hydraulic Hammer (Cat 330BL) • CATERPILLAR H130S Hydraulic Hammer (Cat 320CL) • TRAMAC 400S Hydraulic Hammer • KUBOTA KXB500N Hydraulic Hammer (Kubota Mini) • UNUSED CATERPILLAR CVP110 Hydraulic Plate Compactor (Cat 320CL) • JRB 5-Tine Grapple (Cat 330) • LEMAC Concrete Pulverizer (Cat 330) • MCMILLEN Hydraulic Auger, with 30", 12", and 8" augers (Kubota KX101) • GEITH 36" QC Digging Bucket (Cat 330) • CATERPILLAR 30" QC Digging Bucket (Cat 330) • UNUSED CATERPILLAR 24" QC Digging Bucket (Cat 320)



UNUSED CAT PLATE COMPACTORS



CAT H130S

LOADERS AND ATTACHMENTS



'96 CAT 950F SERIES II

1996 CATERPILLAR 950F Series II, s/n 5SK02317, Cat 3116 diesel engine and powershift transmission, Balderson general purpose loader bucket with bolt-on cutting edge, Balderson hydraulic coupler, front auxiliary hydraulics, EROPS with ac, and 23.5R25 tires. In good condition with good tires. (Meter Reads 5,160 Hours) (Reserved For Use During Loadout with 60" Forks)

1998 CATERPILLAR 938G, s/n 6WS00541, Cat 3126 DITA diesel engine and powershift transmission, Cat general purpose loader bucket with bolt-on cutting edge, Cat/Balderson hydraulic coupler, auxiliary hydraulics, EROPS with heat and ac, and 20.5R25 tires. In very good condition with very good tires. (Meter Reads 2,870 Hours)



'98 CAT 938G



'69 CAT 955K

1969 CATERPILLAR 955K Crawler, s/n 85J2554, Cat diesel engine and powershift transmission, general purpose loader bucket with teeth and cutting segments, pedal steer, ROPS canopy, and 15" TBG pads. In good condition with good undercarriage. (Meter Reads 5,775 Hours)

CAT 950 Attachments: BALDERSON Left Side Hydraulic Dump Bucket • BALDERSON 2-Section Boom • BALDERSON 60" Fork Attachment
CAT 938 Attachments: BALDERSON Left Side Hydraulic Dump Bucket • BALDERSON 2-Section Boom • BALDERSON 60" Fork Attachment

MOTOR GRADER AND COMPACTORS

1987 CATERPILLAR 120G, s/n 87V08201, Cat 3304 diesel engine and powershift transmission, 12' offsetable fully hydraulic moldboard, Spectra Physics laser plane control ready (no instruments), front scarifier (no shanks), EROPS, and 13.00-24 tires. In good condition with good tires. (Meter Reads 00,424 Hours)



'87 CAT 120G

BALDERSON 8' QC Dozer Blade, with Balderson mounting attachment (Cat 120)



'86 IR SD-100D

1986 INGERSOLL RAND SD-100D, s/n 5084S, Cummins 4BTA-3.9 diesel engine and hydrostatic transmission, 84" smooth drum, variable speed vibration, ROPS canopy, and 23.1-26 tires. In good to very good condition with good to very good tires. (Meter Reads 01,524 Hours)



'95 IR SD-70D

1995 INGERSOLL RAND SD-70D, s/n 143775, Cummins 4BT3.9-C diesel engine and hydrostatic transmission, 66" smooth drum, variable speed vibration, ROPS canopy, and 14.9-24 tires. In good to very good condition with good tires. (Meter Reads 00,763 Hours)

TRACTOR LOADER BACKHOES AND ATTACHMENTS

2005 CATERPILLAR 430D IT, 4x4, s/n BML05169, Cat 3054 diesel engine and shuttle transmission, general purpose loader bucket with bolt-on cutting edge, hydraulic coupler, front auxiliary hydraulics, 24" digging bucket, rear auxiliary hydraulics, backhoe pilot controls with pattern changer, Lincoln auto lube system, EROPS with ac, 340/80R18 front and 19.5L-24 rear tires. In excellent condition with excellent tires. (Meter Reads 0,070 Hours)



'05 CAT 430D IT 4X4 (70 HOURS)

1995 JOHN DEERE 410D, 4x4 Extend-A-Hoe, s/n 814228, JD diesel engine and shuttle transmission, general purpose loader bucket with bolt-on cutting edge, 24" digging bucket, 2-stick backhoe controls, EROPS, 14-17.5 front and 18.4-28 rear tires. In good condition with good tires. (Meter Reads 5,803 Hours)



'95 JD 410D 4X4 E-HOE

1995 JOHN DEERE 410D, 4x4 Extend-A-Hoe, s/n 809076, JD diesel engine and shuttle transmission, general purpose loader bucket, 24" digging bucket, 2-stick backhoe controls, EROPS, 14-17.5 front and 18.4-28 rear tires. In good condition with very good rear and fair front tires. (Meter Reads 6,496 Hours)



'95 JD 410D 4X4 E-HOE

(No Glass in Cab) (Missing Right Side Door)
Backhoe Attachments: UNUSED CATERPILLAR H90C Hydraulic Hammer (Cat 430) • UNUSED CATERPILLAR CVP40 Hydraulic Plate Compactor (Cat 430) • UNUSED CATERPILLAR Left Side Hydraulic Dump bucket (Cat 430) • CATERPILLAR 96" Hydraulic Broom, with water spray (Cat 430) • UNUSED CATERPILLAR 3-Section Boom (Cat 430) • UNUSED CATERPILLAR 48" Fork Attachment (Cat 430) • CATERPILLAR Rear Manual Coupler
Digging Buckets: CAT (2) 24" and (1) 12" (Cat 430 DIT) • JOHN DEERE (2) 26" and (1) 12" (JD 410)

SKID STEER LOADER, UTILITY TRACTOR, AND ATTACHMENTS

1996 NEW HOLLAND LX885, s/n 898604, New Holland diesel engine and hydrostatic transmission, 72" general purpose loader bucket, Super Boom, manual coupler, high flow auxiliary hydraulics, water system with roof mounted poly tank, and Air Boss wheels with bolt-on rubber segments. In good to very good condition with good to very good tires. (Meter Reads 0,813 Hours)



'96 NEW HOLLAND LX885 (813 HOURS)

1995 FORD/NEW HOLLAND 2120, 4x4, s/n UV28045, 42HP diesel engine and hydraulic shuttle shift transmission with 12 forward and 4 reverse gears, New Holland 7309 loader attachment, general purpose bucket, 3-point hitch, rear PTO, rear auxiliary hydraulics, drawbar, ROPS canopy, 9.5-16 front and 14.9-26 rear tires. In good to very good condition with good to very good tires. (Meter Reads 0,530 Hours)



'95 FORD-NEW HOLLAND 2120 4X4 (530 HOURS)

Skid Steer Attachments: UNUSED BRADCO 100981 Stump Grinder • ALITEC CP16A, 16" Cold Planer • QUICK ATTACH 6' Hydraulic Brush Cutter • ALITEC RW18, 48" Rock Saw, with hydraulic positioner and 18" dig depth • UNUSED QUICK ATTACH 84" Root Rake, with grapple • UNUSED QUICK ATTACH 84" Skeletal Bucket, with grapple
3-Point Attachments: GOOSEN Bale Chopper, with rotating chute • 8' York Rake, with 6' scarifier and 8' back grade blade, transport wheels



GOOSEN BALE CHOPPER

LARGE 2-DAY ABSOLUTE AUCTION

TRENCH COMPACTORS AND WALK BEHIND ROLLERS

2003 UNUSED WACKER RT820CC Articulated Trench Compactor, s/n 5421147, Lombardini diesel engine, 32.5" split padfoot drums, drum cleaners, wireless/umbilical remote. In excellent condition. (Meter Reads 0.5 Hours)

1998 UNUSED WACKER DPU100-70 Reversible Plate Compactor, s/n 1126496, Lombardini 2 cylinder diesel engine, 39" width plate.

1998 WACKER DPU7060 Reversible Plate Compactor, s/n 1126484, Farymann diesel engine, 30" width plate and variable vibration. In very good condition.

WACKER RSS800A Single Drum Walk Behind Roller,

s/n 658201335, Honda 11HP gas engine and hydrostatic transmission, 28.5" smooth drum, tailgate bracket, (2) stabilization rollers, and electric start. In very good condition.

WACKER W75 Double Drum Walk Behind Roller, s/n 291900316, 1 cylinder diesel engine and hydrostatic transmission, 29.5" smooth drums, water system, and manual crank start. In good condition.



UNUSED WACKER RT820CC



WACKER REVERSIBLE PLATE COMPACTORS

ASPHALT PAVING

1994 BARBER GREENE BG-225B Crawler Asphalt Paver, s/n 6YK00494, Cat 3054T diesel engine and hydrostatic transmission, Extend-A-Mat 8-16B, 8'-16" heated, vibratory screed, sonic controls for auto feeder, slope and grade controls, dual operator stations, and 14" rubber bolt-on pads. In good condition with good pads. (Meter Reads 01,598 Hours)



'94 BARBER GREENE BG-225B (1,598 HOURS)



'97 CAT CB-434C (108 HOURS)

1994 INGERSOLL RAND DD-90 Tandem Vibratory Roller, s/n 6343, Cummins diesel engine and hydrostatic transmission, 66" smooth drums, dual frequency vibration, vibratory drum selector, and front and rear drum spray. In good condition. (Meter Reads 00,162 Hours)

1997 INGERSOLL RAND DD-32 Tandem Vibratory Roller, s/n 149637, Deutz diesel engine and hydrostatic transmission, 52" smooth drums, vibratory drum selector, front and rear drum spray, and ROPS canopy. In good condition. (Meter Reads 0,848 Hours)

1994 INGERSOLL RAND DD-24 Tandem Vibratory Roller, s/n 6784, Deutz diesel engine and hydrostatic transmission, 47" smooth drums, vibratory drum selector, ROPS canopy, and work lights. In good condition. (Meter Reads 1,229 Hours)

1995 WACKER RD880V Vibratory Roller, s/n 673602591, B&S Vanguard 16HP V-twin gas engine and hydrostatic transmission, 35.5" smooth drums and front and rear drum spray. In very good condition. (Meter Reads 0,238 Hours)



(3) IR VIBRATORY ROLLERS

AERIAL LIFTS AND FORKLIFTS

2006 JLG 800AJ, 80', 4x4 Aerial Lift, s/n 0300098473, Cat diesel engine, articulated boom, 36"x8", 500 lb capacity man/material basket, Sky Power package to include: Miller CST280, 280 amp stick welder, Miller Spectrum 375 DC plasma cutter, Sky Air with on-board air compressor, and 445/55D19.5 foam filled tires. In very good condition with very good tires. (Meter Reads 0,483 Hours)



'06 JLG 800AJ, 80' (483 HOURS)

2007 JLG 4394RT, 43', 4x4 Rough Terrain Scissor Lift, s/n 0200161561, Deutz diesel engine, 84"x13" platform with (2) 4' hydraulic extensions to 21', 1,250 lb capacity, (4) hydraulic stabilizers, and 33x15.50-16.5 foam filled tires. In excellent condition with very good tires. (Meter Reads 0,007 Hours)



'07 JLG 4394RT, 43' (7 HOURS)

2006 LULL 944E-42, 9,000 lb Telescopic Rough Terrain Forklift, s/n 0160016861, Cummins QSB4.5 diesel engine and powershift transmission, 42' lift height, 3-section telescopic boom, 48" forks, fork rotation, manual coupler, enclosed cab with heat and ac, and 15.5-25 foam filled tires. In good to very good condition with good tires. (Meter Reads 01,792 Hours) (Reserved For Use During Loadout)



'06 LULL 944E-42, 9,000 LB

Lull Attachments: UNUSED GAR-BRO 1/2 Cubic Yard Concrete Bucket, with hydraulic gate • **UNUSED 10' Boom**, with hydraulic winch, 2,000 lb capacity • **48" Block Fork Attachment**, with hydraulic tilt • **UNUSED 48" Fork Attachment**, with hydraulic fork positioner • **UNUSED 96" General Purpose Bucket**

CATERPILLAR V60B, 6,000 lb Pneumatic Tired Forklift, s/n 52J438, diesel engine and hydrostatic transmission, 156" 2-stage mast (103" retracted height), side shift, 42" forks, and FOPS canopy. In good condition in good tires. (Meter Reads 01,254 Hours) (Reserved For Use During Loadout)



CAT V60B, 6,000 LB

1995 SKYJACK SJ-3220 Electric Scissors Lift, s/n 600284, 20' platform height, 800 lb capacity, and 7'x30" extendable platform. In good condition.

WESCO JibRig Extendable Forklift Boom • Man Basket, with fork pockets



'95 SKYJACK SJ-3220

DRUM CHIPPER AND MORTAR MIXERS



'95 MORBARK 17 (550 HOURS)

UNUSED MQ WHITEMAN WM-90SH8 Portable Mortar Mixer, s/n AD757382, Honda 8HP gas engine, B78-13 tires. In excellent condition.

GILSON Portable Mortar Mixer, s/n Unknown, Briggs & Stratton 9HP gas engine, B78-13 tires. In good condition with good tires.

1995 MORBARK 17 Portable Drum Chipper, s/n 4S8SZ1511SW002408, John Deere 6068T diesel engine and Twin Disc PTO, auto feed system, rotating discharge chute, and 12-16.5 tires. In good to very good condition with good to very good tires. (Meter Reads 00,550 Hours)



UNUSED WHITEMAN MORTAR MIXER

TRUCK TRACTOR AND LOWBOY TRAILER

1998 MACK CL713 Tandem Axle Truck Tractor, Mack E7-454 diesel engine and Maxitorque T2180, 18 speed transmission, 58,000 lb rears, 20,000 lb front axle, wetline system, double frame, stationary 5th wheel, Merritt aluminum headache rack with rigging boxes, camelback suspension, 2-stage engine brake, twin aluminum fuel tanks, air ride cab, cruise control, ac, and 12.00R24 tires. In very good condition with very good tires. (Odometer Reads 038,149 Miles) (Meter Reads 02,011 Hours)



'98 MACK CL713 (38,149 MILES)

1997 ROGERS
SPCR50PL98/54/24/102/3XSP,
50-Ton Tri-Axle Lowboy, non-ground bearing hydraulic detachable gooseneck, 24'x102" load deck, 10'6" deck over wheels, spring/beam suspension, outriggers, chain dogs, and 255/70R22.5 tires. In good condition with very good tires. (Some Decking To Be Replaced)



'97 ROGERS 50 TON

AIR COMPRESSORS, GENERATORS, AND LIGHT PLANTS

1998 INGERSOLL RAND P185WJD, 185CFM, s/n 294953UJ1221, John Deere diesel engine, dual hose reels, water separator, folding tongue, and 215/75R15 tires. In very good condition with good tires. (Meter Reads 00,282 Hours)



'98 AND '87 IR 185CFM

1987 INGERSOLL RAND P-185A-A-JD, 185CFM, s/n 163642U87957, John Deere 4239DF diesel engine, 215/75R15 tires. In good condition with good tires. (Meter Reads 03,219 Hours)



'94 IR 50KW

2007 INGERSOLL RAND L6-4MH Portable Light Plant, s/n 380267ULQC45, VIN# 4FVLSBDA37U380267, Kubota D905 diesel engine, (4) removable/stowable lights, manual raise and lower, and 175/80D13 tires. In very good condition with good tires. (Meter Reads 00,406 Hours)

1994 INGERSOLL RAND E50XWCU, 50KW Generator, s/n 233534UED811, Cummins 4BT3.9-G1 diesel engine, single/3-phase, 120/240 volt plugs, sound suppression, and 215/75R15 tires. In very good condition with good tires. (Meter Reads 2,520 Hours)



'07 AND '96 IR L6-4MH LIGHT PLANTS

1996 INGERSOLL RAND L6-4MH Portable Light Plant, s/n 259595UIG823, Kubota D905-E diesel engine, (4) removable/stowable lights, manual raise and lower, and 185/80R13 tires. In very good condition with good tires. (Meter Reads 01,203 Hours)



(2) '95 DIETZ D2000 ARROW BOARDS

1995 DIETZ D2000 Portable Arrow Board, s/n 138, Kubota EL300-E diesel engine, E78-14 tires. In very good condition. (Meter Reads 00,074 Hours)

1995 DIETZ D2000 Portable Arrow Board, s/n 156, Kubota EL300-E diesel engine, E78-14 tires. In very good condition. (Meter Reads 00,156 Hours)

DUMP TRUCKS

1999 MACK CL713 Tandem Axle Dump, Mack E7-460, 460HP diesel engine and Maxitorque T2180, 18 speed transmission, 58,000 lb rears, 20,000 lb front axle, Bristol Donald 15' heated steel dump body with (4) 10 ton hoist cylinders and subframe, power tarp, air gate, 2-stage engine brake, power divider, camelback suspension, air ride cab and seat, cruise control, ac, and 12.00R24 tires. In very good condition with good tires. (Odometer Reads 047,093 Miles) (Meter Reads 03,982 Hours)



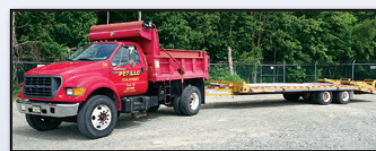
'99 MACK CL713 (47,093 MILES)

1999 MACK CL713 Tandem Axle Dump, Mack E7-460, 460HP diesel engine and Maxitorque T2180, 18 speed transmission, 58,000 lb rears, 20,000 lb front axle, Bristol Donald 15' heated steel dump body with (4) 10 ton hoist cylinders and subframe, power tarp, air gate, 2-stage engine brake, power divider, camelback suspension, air ride cab and seat, cruise control, ac, and 12.00R24 tires. In very good condition with good tires. (Odometer Reads 057,994 Miles) (Meter Reads 04,390 Hours)



'99 MACK CL713 (57,994 MILES)

2001 FORD F-750XL Super Duty Single Axle Dump, Cat 3126, 7.2L diesel engine and 7 speed transmission, Thiele 10' steel dump body with single chute and electric tarp, 21,000 lb rear axle, 12,000 lb front axle, spring suspension, tow package with air, air brakes, 33,000 lb GVWR, cruise control, ac, and 11R22.5 tires. In good to very good condition with good tires. (Odometer Reads 031,107 Miles)



'01 FORD F-750XL (31,107 MILES)
'05 EAGER BEAVER 20 TON

1989 FORD F-800 Single Axle Dump, Ford 210HP diesel engine and 5 speed transmission with 2 speed rear, 10' steel dump body with single chute and power tarp, air brakes, tow package with air, spring suspension, and 11R22.5 tires. In good condition with good tires. (Odometer Reads 173,697 Miles)



'89 FORD F-800

1997 FORD F-350XL, 4x4 Single Axle Dump, Powerstroke 7.3L diesel engine and automatic transmission, Heil 8' steel landscape dump body with tarp, Western 8'6" plow package, Hi-Way Super P-8 stainless steel V-box salt spreader with gas engine and cab controls, dual rear wheels, dual fuel tanks, and 235/85R16 tires. In good condition with very good front and good rear tires. (Odometer Reads 70,119 Miles) (Fender and Bed Rust)



'97 FORD F-350XL, 4X4

TRAILERS AND 4-WHEELER

2005 EAGER BEAVER 20XPT, 20 Ton Tandem Axle Tag-A-Long, 8'6"x21' level deck, 6' beavertail, 6' ramps, ABS, air brakes, chain dogs, 48,380 lb GVWR, and 215/75R17.5 tires. In good to very good condition with good tires.

1995 TOWMASTER Tandem Axle Tilt Deck Tag-A-Long, 73"x14' deck, chain dogs, and 9.50-16.5 tires. In very good condition with good tires.



'95 TOWMASTER TILT DECK

1987 HAULMARK K716, 16'x7' Tandem Axle Enclosed Utility, wood shelving, 4' rear access door, curbside door, spring suspension, and F78-15 tires. In fair condition with fair tires. (No Title)



2000 PARKER Single Axle Tag-A-Long, 54"x9' level deck, 36" mesh ramp, 1,560 lb GVWR, and 4.80-12 tires. In good condition with good tires. (No Title)
1999 HONDA TRX400EX, Four-Trax 4-Wheeler, Honda 400cc gas engine. In good condition. (No Title)

'99 HONDA TRX400EX

LARGE 2-DAY ABSOLUTE AUCTION

FUEL, WATER, AND UTILITY TRUCKS

1988 FORD F-800 Single Axle Fuel Truck, Ford model 185F, 7.8L, 185HP diesel engine and 5 speed transmission with 2 speed rear, Oilmans 1,800 gallon steel 2-compartment fuel tank (1,000/800 gallon) (2) hose reels and meters, air hose reel, air brakes, 30,000 lb GVWR, and 11R22.5 tires. In good to very good condition with good to very good tires. (Odometer Reads 049,316 Miles) (Full 1,000 Gallon Compartment and Partial 800 Gallon Compartment - On-Road Diesel Fuel Purchased March 2022)



'88 FORD F-800 FUEL TRUCK, WITH APPROX 1,400 GALLON ON-ROAD DIESEL



'97 FORD F-800 (3,080 MILES)

1997 FORD F-800 Single Axle Water Truck, Cummins B5.9-175, 175HP diesel engine and 6 speed transmission, 2,000 gallon steel water body with rear, side, and front cable controlled spray heads, rear hose reel, electric/hydraulic brakes, 30,000 lb GVWR, and 11R22.5 tires. In good condition with very good tires. (Odometer Reads 003,080 Miles) (Meter Reads 1,050 Hours)

2006 FORD F-550XLT SD 4x4 Crew Cab Utility Truck, Power Stroke 6.0L diesel engine and automatic transmission, Reading 9' enclosed walk-in utility body, 100 gallon fuel tank with 12 volt pump, dual rear wheels, tow package, running boards, power windows and locks, cruise control, ac, and 225/70R19.5 tires. In good condition with good tires. (Odometer Reads 061,090 Miles)



'06 FORD F-550XLT, 4X4



'06 FORD F-550XLT, 4X4

2006 FORD F-550XLT SD, 4x4 Utility Truck, Powerstroke 6.0L diesel engine and automatic transmission, Reading 11' enclosed walk-in utility body, 100 gallon fuel tank with 12 volt pump, dual rear wheels, tow package, running boards, power windows and locks, cruise control, ac, and 255/70R19 tires. In good condition with very good tires. (Odometer Reads 193,301 Miles)

2004 FORD F-350XL SD, 4x4 Crew Cab Utility Truck, Powerstroke 6.0L diesel engine and automatic transmission, Reading 9' enclosed walk-in utility body, 100 gallon fuel tank with 12 volt pump, tow package, dual rear wheels, running boards, and 235/85R16 tires. In good to very good condition with very good tires. (Odometer Reads 019,915 Miles)



'04 FORD F-350XL, 4X4



'96 FORD F-350XLT, 4X4

1996 FORD F-350XLT, 4x4 Utility Truck, Powerstroke 7.3L diesel engine and automatic transmission, Reading 11' open utility body, 100 gallon fuel tank with 12 volt pump, Western 8'6" snow plow package, tow package, dual rear wheels, dual fuel tanks, power windows and locks, cruise control, ac, and LT235/85R16 tires. In good condition with good tires. (Odometer Reads 103,244 Miles)



'88 FORD F-350, 4X4

1988 FORD F-350, 4x4 Flatbed/Fuel Truck, V-8 diesel engine and 5 speed transmission, Reading 12'6" steel flatbed, 350 gallon steel fuel tank with PTO pump and (2) hoses, Chelsea PTO, dual rear wheels, tow package, and LT235/85R16 tires. In good condition with good tires. (Odometer Reads 137,140 Miles)

ON-ROAD DIESEL FUEL AND FUEL STORAGE TANKS

1997 ARMOR CAST 6,000 Gallon Concrete Encased Steel Above Ground Fuel Tank, with steel access stairway, full (6,000 gallon) on-road diesel fuel (sold separately). Tank dimensions 18'6" L x 9'10" W x 9'11" H, approximate empty weight = 33.9 ton. Armor Cast engineer drawings available – contact auction company. Buyer responsible for tank removal.



ARMOR CAST 6,000 GALLON TANK AND 6,000 GALLON ON-ROAD DIESEL



ARMOR CAST 6,000 GALLON TANK AND 6,000 GALLON ON-ROAD DIESEL

1,000 Gallon Fuel Tank, with containment and electric pump • (2) **UNUSED** 500 Gallon Fuel Tanks, with containment and 120 volt pumps

UNUSED 500 GALLON FUEL TANKS

6,000 gallons of On-Road diesel fuel. Fuel was polished June 8, 2022 and final samples are being lab tested – contact auction company for Fuel Analysis Report. Diesel fuel and storage tank will be offered individually and as an entirety. Buyer(s) will be responsible for fuel transportation and tank removal.



TRENCH BOXES AND ROAD PLATE



2000 **GME** 20'x6'x8" Double Wall Trench Box, s/n 9902307, with 8' and 5' spreaders • **GME** 16'x6'x4" Double Wall Trench Box, s/n M01101795, with (8) 42" spreaders • **GME** 20'x5'10"x8" Double Wall Trench Box, with 5' spreader sets **Road Plate:** (2) 7'6"x5'x5/8" • (3) 9'x6'x1" • (2) 10'x6'x1/2"

GME TRENCH BOXES

SEA CONTAINERS AND OFFICE/STORAGE TRAILERS – DAY 2

(27) 8'x20' Sea Containers: (5) 2018; (4) 2014; (2) 2013; (2) 2006; (2) 2005; (2) 2004; (4) 2003; (1) 1993; (1) 1992; (3) 1991; and (1) 1987 (Conditions Range From Excellent to Good) • (1) 40'x8'x9.5'H Aluminum Storage Container



(27) 8'X20' SEA CONTAINERS



(3) 28'x8' Single Axle Office/Storage Trailers, roll-up door, office area with plan table and file cabinets, fluorescent lights, baseboard heat, and ac. In fair to good condition. (No Titles)

OFFICE/STORAGE TRAILERS

SEWER/WATER TOOLS – DAY 2



MUELLER C1-36

- (2) 100' rolls of 3/4" Copper tube • 2" Copper Tube
- (4) **UNUSED** 6-10 Precast Lifters • (2) **MUELLER** 8" Gate Valves • Ductile Iron Fittings: Mega-Lugs; Flanges; Bends; Reducers • PVC Fittings

RIDGID DRAIN CLEANERS

MUELLER C1-36 Wet Tap, 36" Boring Bar Travel with 12", 10", 8", 6", and 4" cutter heads and multi-vane pneumatic driver

- **MUELLER D-5** Pipe Tap • **UNUSED MUELLER H603** Power Drive Head • **UNUSED RIDGID KOLLMANN K-1500SP** Sectional Drain Cleaner • **UNUSED RIDGID K-400-T2** Drum Style Drain Cleaner

- (10) 100' Rolls of 1" Copper Tube



PUMPS AND GENERATORS – DAY 2

WACKER G506, 5600 Watt, 120/240 Volt, Honda 11HP • **HOMELITE 180R62**, 6200 watt, 120/240 volt • (2) **WACKER GH3500** Generators • **WACKER 3"** Diaphragm Pump • **WACKER PT3**, 3" Trash Pump • (2) **WACKER PT2**, 2" Trash Pumps • (2) **HOMELITE 2"** Centrifugal Pumps • **KENCO 3"** Submersible Pump • (2) **UNUSED WACKER PS2-400**, 2" Submersible Pumps • **WACKER 2"** Submersible Pump • 2" and 3" suction and Discharge Hose • 3/4" Water Line and Standing Sprinklers

CONTRACTORS TOOLS – DAY 2

LONGYEAR Concrete Saw, Wisconsin 65HP hydrostatic (253 Hours) • **STONE MS2** Saw Devil Gas 20" Masonry Saw, Honda 11HP • **TARGET 16"** Electric Masonry Saw, 5HP, 208-230v • **TARGET** Electric Masonry Saw • **TARGET** Electric Tile Saw • **UNUSED WACKER** Wet Screenshot, Honda gas • **WACKER**



CONTRACTORS TOOLS

B5000 Gas Powered Concrete Vibrator • **MQ MB-25HD** Rebar Bender • **MQ HBC-25N** Electro-Hydraulic Rebar Cutter, capacity No. 8 1" rebar • **UNUSED (2) SPECTRA PHYSICS** Dialgrade Pipe Lasers • **UNUSED SPECTRA PHYSICS 1110XL** Rotating Laser • (6) **UNUSED** Tripods • (10) **UNUSED MAKITA 14"** Gas Demo Saws • **UNUSED WACKER VPA-1350** Plate Compactor, with water • (2) **WACKER 1350** Plate Compactors • (2) **UNUSED WACKER BS-2Y** Foot Compactors • **UNUSED WACKER GVR151Y** Foot Compactor • (6) **WACKER** Foot Compactors • (2) **BOSCH & WACKER** Electric Paving Breakers, with carts • (8) Pneumatic Paving Breakers and (2) rock Drills • (5) **HOMELITE** Chain Saws • (100+/-) **UNUSED** Tagged and Certified **LIFTALL** Wire Rope Slings and Chokers, from 3/8"x4' to 5/8"x12' • **UNUSED RIDGID MS1290LZA 12"** Sliding Compound Miter Saw, with Ridgid roller stand • **UNUSED** Saw Blades, Masonry Blades, Abrasive Blades, HILTI Hammer Drill Bits • Electric Hand Tools: Hammer Drills; Band Saws; Saws Alls; Jig Saws; Circular Saws; Grinders • (110) 6' Scaffold Bucks and X-Bracing • (60) 6' Walk-Thru Scaffold Bucks • (300) 10'x9"x1-1/2" Scaffold Planks • Screw Jacks and Casters • Ladders and Baker Scaffolding • (3) **UNUSED** Shop Drum Fans, 48", 42", and 36" • (2) **UNUSED MASTER B200BT**, 200,000BTU Torpedo Heaters • (2) **DAYTON** Torpedo Heaters • (2) **UNUSED RIDGID 12** and 16 Gallon Shop Vacs • **SNAPPER ET300** Gas Powered Edger • (9) **UNUSED/UNBUILT JACKSON** Metal Tub Wheelbarrows

CONTRACTORS TOOLS



SHOP TOOLS AND MATERIALS – DAY 2

OTC Master Pulling Set – 17.5/30/50 Ton Complete with hydraulic rams, pullers, bearing splitter, threaded adapters, ram caps, etc. • **AEROQUIP ProCrimp 1390** Hose Crimping Station, complete with collets, fittings, cutoff saw, workbench, and hose • **GARDNER DENVER HPL15F-12** Horizontal Shop Air Compressor, 15HP, 3-phase, 480/277 volt • **MILLER Deltaweld 650** Welder, 3-phase, with Millermatic S-54D Wire Feed Unit • **UNUSED MILLER Millermatic 25**, 200 Amp Mig Welder • **UNUSED MILLER Spectrum 2050** Plasma Cutter, with auto-line • **MILLER Spectrum 701** Plasma Cutter, 3-phase, 460 volt • **RIDGID 1224** Pipe Threader • 5-Ton Rolling Shop Gantry, with Coffing 1/2 ton electric hoist • **KWIK-WAY 50** Ton Hydraulic Shop Press • **KALAMAZOO** Horizontal Metal Cutting Band Saw • (2) Horizontal Metal Cutting Band Saw • **KARCHER HDS120** Electric Pressure Washer, with heat, 3-phase, 480/277 volt • 20 Ton and (2) 4 Ton Floor Jacks • **HEIN-WERNER** Transmission Jack • Railroad Jacks and Bottle Jacks • (12) Jack Stands, up to 10 ton • **OTC** Wheel Bearing Lock Nut Socket Set • 1" and 3/4" Drive SAE and Metric Socket Sets • 1" and 3/4" Drive Impact Socket Sets, SAE and Metric • **WILLIAMS** and **PROTP** 20 Piece Set Combination Wrenches, from 1" to 2-1/2" • (2) Pedestal Grinders • **CRAFTSMAN 20"** Drill Press • Parts Cleaner • Quantity of Steel Stock and Tubing • Angle Steel 20' and 10' • Channel Steel 10' and 8' • Flat Bar Aluminum and Steel • Square Box Steel 10' • 20' Threaded Steel Pipe of 2", 1-1/2", 1", 3/4", 1/2" • 20' Copper Pipe of 2", 1-1/2", 1-1/4", 3/4", 1/2" • 10' Solid Steel Bar, Plate Steel • (2) Steel Stock Racks • (1) 3-Section 10' Heavy Duty Reinforced Pallet Racking, with (5) shelves • (5) 10' Sections Pallet Racking, with (3) shelves each • (3) 2-Section 10' Pallet Racking, with (4) shelves • (12) 5-Shelf Metal Shelving Units • Bolt Bins, Brass Fittings, Hardware



OTC MASTER PULLER SET



EQUIPMENT PARTS AND TIRES – DAY 2

UNUSED CAT 320CL Teeth and Side cutters and Hardware • **UNUSED CAT 330** Teeth, Side Cutters, and Hardware • Cutting Edges: D6R; D3G; 430 General Purpose and Side Dump; **KOMATSU D155; D65; D68; D31** • **UNUSED CAT 330L** Muffler • **KOMATSU D155** Muffler and Exhaust Pipe • **KOMATSU D65** and **D68** Muffler and Exhaust Pipe • **UNUSED INGERSOLL RAND 185** Radiator • **UNUSED JOHN DEERE 410** Hydraulic Tank • Seats, Back Rests, and Arm Rests: SD100 and SD70; **KOMATSU D68; D65; D31; INGERSOLL RAND DD32; DD24; JOHN DEERE 410D** • (2) **CAT** Seats CB-434C • **NEW/UNUSED** Tires: (2) 19.5L-24, with rims • (2) 340/80R18, with rims • (11) 12.00R24, with rims (open rims) • (7) 11R22.5, with Budd rims • (4) 225/70R19.5, with rims • (2) 18.4-28, with rims • (2) 14-17.5, with rims • Used Tires: 20.5R25 (no rim) • 23.5R25, with rim • 23.1-26, with rim • (3) 10 Ton Dump Body Hoists • 8' Hanging Drag Magnet