

1440 COWPATH RD. • HATFIELD, PA 19440
 215/361-9099 • Fax: 215/361-9212
 www.hunyady.com



04 CAT 320CL



07 CAT D5GXL

PRE-SORTED
 FIRST CLASS MAIL
 US POSTAGE
PAID
 UPPER DARBY, PA
 PERMIT #45



20 KUBOTA SVL97-2



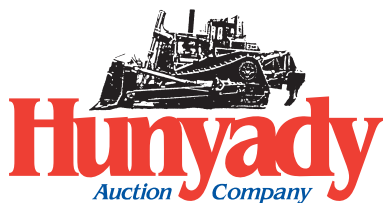
ABSOLUTE AUCTION
VIRTUAL, LIVE BROADCAST
COMPLETE LIQUIDATION

**Network Company/
 The Estate of Nelson Trushel**

19 INTERNATIONAL HX615

WEDNESDAY, MARCH 30, 2022 - 9:00AM
Fairview, Pennsylvania (Erie Area)

ABSOLUTE AUCTION



**Network Company/
The Estate of
Nelson Trushel**

Online Bidding | Powered By: **proxibid**

Please visit our website at
www.hunyady.com

Full Photo Library Available

Notice: Mr. Nelson Trushel, a very respected contractor and honorable gentleman, has passed away. His wife and son have made the difficult decision, after being involved with the company for (46) years, to liquidate the assets of his construction company. Everything in the auction is owned by Network Company with the exception of the Long Reach Excavator which has been consigned by Gernatt Asphalt Products of Collins, New York. All items will positively sell to the highest bidder regardless of price, with the exception of the real estate which will be sold "Subject To Owner's Immediate Confirmation"

Location: 7250 Market Road, Fairview, Pennsylvania 16415 **(Please Note: There will be NO LIVE BIDDING onsite)**

LIVE, VIRTUAL AUCTION: This auction is being conducted via LIVE, VIRTUAL ONLINE ONLY. There will be NO LIVE BIDDING FROM THE SITE. ADDITIONALLY, there will be NO PAYMENTS accepted at the auction site! Payment must be paid either by wire transfer or credit card.

Terms: Complete payment immediately after receipt of invoice by wire transfer or credit card only. Credit card payments will be charged a 3% processing fee.

Online Bidding: Live internet bidding will be provided by Proxibid. Proxibid will charge an Internet Service Provider Fee of 5% to the successful internet bidder for items over \$10,000 and 10% for items \$10,000 and under, for each lot purchased on-line. All bidders are required to register to bid through Proxibid.

Sales Tax: Since this contractor is selling items not normally sold in the course of his business, the Commonwealth of Pennsylvania considers this an isolated sale and does not require the auction company to collect sales tax.

Inspection: Items will be available for inspection one week prior to sale day, starting on March 23, 2022 from 8:00am until 4:00pm, with the exception of the weekend when the yard will be closed. Inspection is also available sale day morning starting at 7:00am.

Removal: After complete payment, items may be removed sale day until 4:00pm. Items may also be removed March 31st and April 1st from 8:00am until 4:00pm. Closed for the weekend and reopens Monday, April 4th thru Wednesday, April 6th from 8:00am until 4:00pm. All items must be removed by Wednesday, April 6, 2022 at 4:00pm.

Sale Site Phone: (800) BID-N-BUY • Sale Site Fax: (888) 859-8958

TRENCH BOXES AND MISCELLANEOUS

16'x7'6"x5.5" Trench Box, with 44" spreader (NO CERT) • **8'x8'** Manhole box, with 6' spreaders (NO CERT) • 13'x5'x4' Deep Stone Box • (2) 26' Aluminum Van Bodies • **Single Axle Aluminum Storage Body**, with sliding rear door, side door, pintle hitch, and metal steps • Assorted Pipe, Steel, Scrap, and Miscellaneous • (4) 20' Sections of 42" Galvanized Corrugated Pipe • (2) 25' Sections of 12" PVC Pipe • Forklift Dump Hopper • Approximately 150 Gallon Fuel Tank, with manual pump • **HOLLAND** 5th Wheel Forklift Attachment • Canopy • EURO Electric Scooter (Needs New Batteries) • Utility Tractor Grill Guard • Split Cord Wood



16'X7'6"X5.5"

SHOP TOOLS

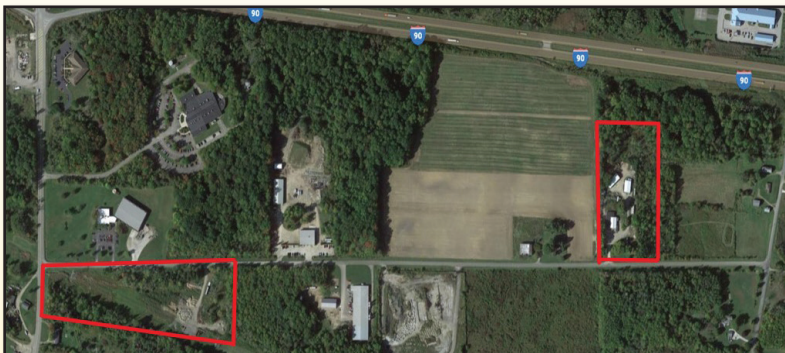
HOTSY 555SS Portable Electric Steam Cleaner, s/n 11090330-166223 • **HYPERTHERM Powermax 800 Plasma Cutter**, s/n 015178Q • **MILLER** Millermatic 251 Portable Welder • **LINCOLN** AC225 Arc Welder • Torch Set • Shop Press • Drill Press • Electric and Pneumatic Tools • Assorted Hand Tools • Toolboxes • Bolt Bins • Lubers and Assorted Lubricants • Plus Much More!

REAL ESTATE

PRIME LOCATION - CLOSE PROXIMITY TO INTERSTATE 90 EXIT 16



OFFICE AND MAIN SHOP



OUT BUILDINGS

To Be Offered At Approximately 11:00AM • (Sold With Reserve and Subject To Owner's Immediate Confirmation)
(Parcels Will Be Offered Individually and Together After A 10% Increase of Individual Bids) • 10% Deposit Sale Day and Closing Within (90) Days

Parcel 1: 7250 Market Road, Fairview, Erie County, Pennsylvania (3.008 +/- Acres)

Improvements: Shop/Office/Storage Building Consisting of: 36'x60' Shop Area, with (2) overhead doors and in-floor heating • 23'x16' Office Area, with restroom, baseboard heat, and man door • 20'x13' Storage Area, with small overhead door • 28'x88' and 20'x28' Storage Areas, with (3) overhead doors and (1) man door. • **40'x63' Storage Building Consisting of:** (3) Overhead Doors • (3) Man Doors • Heated Annex Area, with water supply for pressure washing • Exterior Concrete Wash Pad • **34'x84' Storage Building:** (4) Overhead Doors and (1) Man Door • 12'x12' Storage Building, with hot water in floor heat, swing access doors, man door, and 9'6" and 5' overhang storage areas • Onsite Well and Septic • Electronic Gated Entrance • 2021 School Tax \$2,910.40

Parcel 2: Corner of Avonia Road (PA Route 98) and Market Road, Fairview, Erie County, Pennsylvania (10.58 Acres) Storage Yard • Mostly Level • Semi-Cleared • 2021 School Tax \$314.22

Additional Information Can Be Found at www.Hunyady.com

DUMP TRUCKS

2019 INTERNATIONAL Model HX615 Tri-Axle Dump Truck, powered by Int'l A26, 475HP diesel engine and Allison automatic transmission, equipped with MAC 17'6" heated steel dump body with electric tarp and chute, 46,000# rears, 20,000# front axle, 20,000# steerable lift axle, 86,000# GVWR, tow package with air and electric, air ride suspension, 3-stage engine brake, power windows and locks, aluminum wheels, heated mirrors, cruise control, air conditioning, 425/65R22.5 front, 11R24.5 rear, and 315/80R22.5 lift tires. In very good to excellent condition with very good to excellent tires. (25,645 Miles) (1,032 Hours) **(Purchased New)**



'19 INTERNATIONAL HX615

2019 KENWORTH Model T800 Tri-Axle Dump Truck, powered by Cummins X15, 500HP diesel engine and Allison automatic transmission, equipped with 0x 16' steel dump body with electric tarp, 46,000# rears, 18,740# front and 20,000# lift axle, high lift air gate, 3-stage engine brake, spring/beam suspension, heated mirrors, cruise control, air conditioning, 385/65R22.5 front, 11R24.5 rear, and 11R22.5 lift tires. In good condition with good tires. (73,243 Miles) (3,490 Hours)



'19 KENWORTH T800



2016 FORD Model F-450XL Super Duty 4x4 Dump Truck, powered by Powerstroke 6.7L diesel engine and automatic transmission, equipped with 9'3" aluminum dump body with electric hoist, Fisher Xtreme V 8'6" stainless steel snow plow, with Minute Mount 2 easy mount, tow package, running boards, power windows, locks, and mirrors, cruise control, air conditioning, dual rear wheels, and 225/70R19.5 tires. In very good condition with very good tires. (6,514 Miles) **(Purchased New)**



'16 FORD F-450XL

1988 PETERBILT Model 357 Tandem Axle Dump Truck, powered by Cat 3306 diesel engine and Fuller 8LL, 10 speed transmission, equipped with 14' steel dump body, air ride suspension, double frame, 2-stage engine brake, tow package with air and electric, air conditioning, and 11R24.5 tires. In fair to good condition with good tires.

'88 PETE 357



HYDRAULIC EXCAVATORS AND ATTACHMENTS

2004 CATERPILLAR Model 320CL Extended Reach Hydraulic Excavator, s/n PAB02137, powered by Cat 3066 diesel engine and hydraulic drive, equipped with 45' reach (long boom: 29' pin to pin), (long stick: 20'8" pin to pin), WB 60" cleanup bucket, pattern changer, auxiliary hydraulics, enclosed ROPS cab with heat and air conditioning. In good condition with good undercarriage. (7,599 Hours) (Standard Configuration: Boom 18'4" and Dipper Stick 12'7" (complete with cylinders and hoses) (Unit will be sold: Machine Separate - Standard Boom Separate Then Together) (Sold In-Absentia) (Gernatt Asphalt)



'04 CAT 320CL

2010 CATERPILLAR Model 319D LN Hydraulic Excavator, s/n KFM00181, powered by Cat C4.2 diesel engine and hydraulic drive, equipped with 10'6" dipper stick, 48" digging bucket with side cutters, Cat hydraulic coupler, auxiliary hydraulics, thumb bracket, enclosed ROPS cab with heat and air conditioning, and 24" TBG pads. In good condition with good undercarriage. (5,107 Hours)



STANDARD BOOM AND STICK FOR CAT 320CL

2006 CATERPILLAR Model 312CL Hydraulic Excavator, s/n CBA03259, powered by Cat 3064T diesel engine and hydraulic drive, equipped with 9' dipper stick, 46" digging bucket, Cat hydraulic coupler, auxiliary hydraulics, thumb bracket, enclosed ROPS cab with heat and air conditioning, and 27.5" TBG pads. In good condition with good undercarriage. (07,018 Hours)



'10 CAT 319D LN

Cat 312 Attachments: ALLIED 2700 Hydraulic Plate Compactor • EMAQ 36" bucket with 27" mechanical thumb • CAT 28" Digging Bucket • WB 24" Digging Bucket • H&H 16" Digging Bucket • SEC 65" Cleanup Bucket

Cat 319/320 Attachments: 38", 5-Tine Grapple • ESCO 24" Digging Bucket, with teeth cap • CAT 72" Cleanup Bucket, with bolt-on cutting edge



'06 CAT 312CL

CRAWLER TRACTOR AND RUBBER TIRED LOADER



'07 CAT D5GXL

2007 CATERPILLAR Model D5GXL Crawler Tractor, s/n WGB04198, powered by Cat 3046 diesel engine and powershift transmission, equipped with 6-way blade, differential steering, tow pin, enclosed ROPS cab with heat and air conditioning, and 20" SBG pads. In very good condition with good undercarriage. (1,866 Hours) **(Purchased New)**

2000 CATERPILLAR Model 924G Rubber Tired Loader, s/n 9SW00619, powered by Cat 3056 diesel engine and powershift transmission, equipped with general purpose loader bucket with bolt-on cutting edge, hydraulic coupler, auxiliary hydraulics, enclosed ROPS cab with heat and air conditioning, and 17.5R25 tires. In good condition with good tires. (7,140 Hours) **(Purchased New)**



'00 CAT 924G

Coupler Attachments: 60" Fork Attachment • 12' Snow Pusher

MINI EXCAVATOR AND ATTACHMENTS

2020 KUBOTA Model KX057-4 Mini Hydraulic Excavator, s/n 32014, powered by Kubota 8X50886 diesel engine and hydraulic drive, equipped with swing boom, 6' dipper stick, 24" digging bucket, 13" hydraulic thumb, 77" 4-way backfill blade, dual auxiliary hydraulics, enclosed ROPS cab with heat and air conditioning, and 16" rubber tracks. In very good condition with very good tracks. (587 Hours) **(Purchased New)**
KUBOTA KXB500 Hydraulic Demo Hammer, s/n K500A1110 • **Hydraulic Auger Attachment**, with 24", 18" and 12" flyghts and stand • **NPK C-4 Hydraulic Plate Compactor** • **48" Cleanup Bucket** • **18" Digging Bucket**, with teeth cap



'20 KUBOTA KX057-4

SKID STEER LOADER AND ATTACHMENTS

2020 KUBOTA Model SVL97-2 Skid Steer Loader, s/n 60960, powered by Kubota 3.8L diesel engine and hydrostatic transmission, equipped with 84" general purpose loader bucket with bolt-on cutting edge, hydraulic coupler, high flow auxiliary hydraulics, rearview camera, enclosed ROPS cab with heat and air conditioning, and 18" rubber tracks. In very good to excellent condition with very good tracks. (222 Hours) **(Purchased New)**
5' Hydraulic Mulching Attachment, with carbide tip cutting drum • **QUICK ATTACH 6' Hydraulic Brush Cutter**, s/n 1061292 • **LOEGERING 65-M7200, 7'2" Scarifier/Rake**, s/n 9415 • **HLA 2500, 8' Snow Pusher**, s/n 125975 • **BLUE DIAMOND 81" Material Hopper**, with hydraulic chute • **HLA SFR77B0500, 77" Skeletal Bucket**, s/n 13LA13113 • **TOMAHAWK 96" Loader Bucket**, with weld-on cutting edge • **KUBOTA 48" Fork Attachment** • **JOHN DEERE Tractor to Skid Steer Adapter**



'20 KUBOTA SVL97-2



MULCHING HEAD

UTILITY TRACTORS

1952 FORD Model 8N Utility Tractor, s/n 8N513291, powered by 4 cylinder gas engine and 3 speed transmission, equipped with Ford model 909, 55" PTO brush cutter, 3-point hitch, PTO, 5x50x18 front and 10.00x23 rear tires. In excellent condition with excellent tires. **(Purchased New)**



'52 FORD 8N

1961 FORD Model 861D Powermaster Utility Tractor, s/n 839414, powered by 4 cylinder diesel engine and 5 speed transmission, equipped with 3-point hitch, auxiliary hydraulics, drawbar, PTO, reversible wheels, 6.50x16 front and 13.6x28 rear tires. In excellent condition with excellent tires.



'61 FORD 861D

JOHN DEERE Model 755, 4x4 Utility Tractor, s/n 66562, powered by 3 cylinder diesel engine and hydrostatic transmission, equipped with 55" mower deck, 3-point hitch, auxiliary hydraulics, tow hitch, 23x8.50-12 front and 33x12.5-15 rear tires. In good condition with good tires.

JOHN DEERE Hydraulic Dumping Bagger, s/n M02666X120207, powered by FA210D gas power pack
MONTANA Model N55F, 4x4 Utility Tractor, s/n 2126010852, powered by Mitsubishi 4 cylinder diesel engine and shuttle transmission, equipped with model 21115 front loader attachment, s/n 3657, dual hydraulic outlets, 3-point hitch, PTO, drawbar, John Deere 3-point hitch quick attach folding rollbar, 9.5x20 front and 16.9x24 rear tires. In good condition with good tires. (01,381 Hours)



MONTANA N55F

MANURE SPREADER AND 3-POINT HITCH ATTACHMENTS

JOHN DEERE Model 350 Manure Spreader, s/n W00350X001505, PTO driven, with slinger chain discharge and 9.00x20 tires • **LANDPRIDE PR2596 Landscape Rake**, s/n 349341, PTO • **WOODS 20A20 Preparator** • **LANDPRIDE FDR1672 Finish Mower**, s/n 416755, PTO • **BUSH HOG 296 Brush Hog**, s/n 12-03899, PTO • **JOHN DEERE 7' Sickle Bar Mower**, PTO • **KVERNELAND Model 22119-150143 Seeder**, PTO • **BNL 50 Sprayer** • **200 Gallon Tow Behind Gravity Sprayer**, with 8' spray bar with 9' foldup wings and 9.5L-15SL tires • **DEARBORN 11-34, 2-Gang Disc Harrow** • **4-Gang Disc Harrow** • **BRILLION BT5-3, 3-Tine Chisel Plow**, s/n 162812, with 235/75R15 tires • **JOHN DEERE 2-Bottom Plow** • **1-Bottom Plow** • **DEARBORN 19-52, 6' Lifting Boom**

ROLLBACK TRUCK



'05 INTERNATIONAL 4400

2005 INTERNATIONAL Model 4400 Tandem Axle Rollback Truck, powered by Int'l DT466 diesel engine and Fuller 10 speed transmission, equipped with 24' rollback body with aluminum over wood deck, hydraulic winch with wireless remote, aluminum headache rack, spring suspension, air conditioning, and 11R22.5 tires. In good condition with good tires. (169,824 Miles) (6,131 Hours)

UTILITY TRUCKS AND CAB AND CHASSIS

2016 FORD Model F-350XL, 4x4 Super Duty Utility Truck, powered by 6.2L gas engine and automatic transmission, equipped with 9' enclosed utility body, tow package, 100 gallon fuel tank with electric pump, dual rear wheels, running boards, plow brackets, rearview camera, power windows, locks, and mirrors, cruise control, air conditioning, rearview camera, and 245/75R17.5 tires. In very good condition with good tires. (92,954 Miles)



'16 FORD F-350XL



'11 CHEVY 3500HD

2011 CHEVROLET Model 3500HD, 4x4 Crew Cab Utility Truck, powered by Duramax 6.6L diesel engine and automatic transmission, equipped with 9' aluminum utility body, 11" work bumper with vise, 100 gallon fuel tank with electric pump, material rack, tow package, dual rear wheels, dual fuel tanks, running boards, power windows, locks, and mirrors, cruise control, air conditioning, and 235/80R17 tires. In good condition with very good tires (new steering tires). (147,709 Miles)

1994 FORD Model L9000 Single Axle Cab and Chassis, Cat 6 cylinder diesel engine, Fuller 9 speed transmission, and 11R22.5 tires. (Parts Truck)

TILT DECK AND VAN TRAILERS

2018 TRAIL KING Model TKT14U Tandem Axle Tilt Deck Trailer, equipped with 15'9" tilting rear deck, 4' stationary front deck, 6'7" deck width, 18" beavertail, torsion beam suspension, 102" overall width, 18,640# GVWR, chain dogs, storage box, and 215/75R17.5 tires. In excellent condition with excellent tires. **(Purchased New)**



'18 TRAIL KING TKT14U

2013 FOBES Tandem Axle Tilt Deck Tag-A-Long Trailer, equipped with 76" deck width, 10' wood deck, and 205/75R15 tires. In very good condition with very good tires.

1990 GREAT DANE Model 7311TJWNL, 53' Aluminum Van Trailer, equipped with sliding tandems, swing rear doors, spring suspension, 65,000# GVWR, and 295/75R22.5 tires. In good condition with fair to poor tires.

1976 FRUEHAUF 40' Tandem Axle Galvanized Van Trailer, equipped with side sliding doors, sliding tandems, and 10.00x20 tires. In good condition with fair tires. (No Title)

SIDE BY SIDE ALL TERRAIN VEHICLE

2018 KUBOTA Model RTV-XG850, 4x4 Side by Side, powered by Kubota 2 cylinder gas engine and hi-lo reversing transmission, equipped with brush guard, manual dump bed with spray-on liner, and 25x10.00-12 tires. In very good condition with very good tires. (25 Miles) (7 Hours) **(Purchased New)**



'18 KUBOTA RTV-XG850

FORKLIFT AND CONTRACTORS TOOLS

CLARK Model CF40B, 4,000# Solid Tired Forklift, s/n 153-742, powered by 4 cylinder LP gas engine and shuttle transmission, equipped with 106" 2-stage mast, mast tilt, 40" forks, and 18x7x12 tires. In good condition with good tires.

MUELLER B100 Tap Machine • **HAY Tap Machine** • **RIDGID 600 Electric Threader**, with dies • **CHERNE Mandrel Kit** • **TOPCON TPL4G Pipe Laser** • **TRAIL BLAZER 10721, 36" Walk Behind Sickle Bar Mower**, s/n P113575, Briggs & Stratton gas • **HONDA HS928 Walk Behind Snow Blower**, with wind guard • **JOHN DEERE 110 Lawn Tractor (Not Running)** • **HUSQVARNA 372XP Chain Saw** • **STIHL BG55 Leaf Blower** • **STIHL FS56RC String Trimmer**, with blade kit • **HOMELITE HT-17 Classic Trimmer** • **PARTNER K950 Concrete Saw** • **HONDA EG3500Z Generator** • **HONDA WDP230X, 3" Diaphragm Pump** • **GANZER 3" Portable Diaphragm Pump** • **GANZER 3" Centrifugal Pump** • **RED LION 2" Centrifugal Pump** • **Pneumatic Paving Breaker** • **TOKU TS55 Pneumatic Rock Drill** • **Pneumatic Chipping Hammer** • **Small Quantity Drill and Breaker Steel** • **MILWAUKEE SDS Plus Rotary Hammer** • **DEWALT D2550 Electric Hammer Drill** • **Assorted Lifting Chains** • **(3) Plate Dogs** • **LARGE Quantity Digging Tools** • **Small Quantity Assorted Road Signs and Stands**