

1440 COWPATH RD. • HATFIELD, PA 19440  
 215/361-9099 • Fax: 215/361-9212  
 www.hunyady.com



‘20 AND ‘19 MACK AN64T



‘10 CAT 930H

PRE-SORTED  
 FIRST CLASS MAIL  
 US POSTAGE  
**PAID**  
 UPPER DARBY, PA  
 PERMIT #45



‘12 AL-JON 400XL



**ABSOLUTE AUCTION**  
**MULTIPLE FORMATS**  
**COMPLETE LIQUIDATION -**  
**BY ORDER OF SECURED**  
**CREDITOR**



**(3) DAYS: OCTOBER 23, 30, & 31, 2024**  
**Altoona, Pennsylvania**



**Notice:** By Order of Secured Creditor, all assets of Mueller's Auto Recycling and Sales, Mueller's Scrap and Metal Division, Inc., 1555 Mill Run Road, LLC, John R. Mueller and Beverly L. Mueller are being sold at Absolute Auction\* via a live broadcasted, virtual auction. All items will be sold as-is and where-is, without any warranties or representations of any kind free and clear of any liens or encumbrances and will positively sell to the highest bidder regardless of price, without minimums or reserves.

*\*The Real Estate will be sold as-is "Subject to Creditor's Immediate Confirmation"*

**Location:** The auction will be held at the Mueller office and yard location, 1555 New Mill Run Rd, Altoona, PA 16601 **(Please Note: There will be NO LIVE BIDDING onsite except for Real Estate)**

**Format:**

- **Wednesday, October 23, 2024, 10:00AM** – “Real Estate” Sold Live, Onsite
- **Wednesday, October 30, 2024, 9:00AM** “Major Equipment and Rolling Stock” – Live, Virtual Auction: There will be no live bidding from the site. Additionally, there will be NO PAYMENTS accepted at the auction site! Payment must be paid either by wire transfer or credit card.
- **Thursday, October 31, 2024, 9:00AM** – “Parts, Shop Equipment, Tools, Salvage” – Timed Auction – Bidding begins Wednesday, October 23rd at 9:00AM and Lots Start Closing Thursday, October 31st at 9:00AM. There will be NO PAYMENTS accepted at the auction site! Payment must be paid either by wire transfer or credit card.

**Terms:** Complete payment immediately after receipt of invoice by wire transfer or credit card only. Credit card payments will be charged a 3% processing fee. (See Real Estate Terms)

**Financing:** Financing is available, please contact Susan (215) 361-9099 at the auction company for details.

**Online Bidding:** Live and Timed internet bidding will be provided by Proxibid. Proxibid will charge an Internet Service Provider Fee of 5% to the successful internet bidder for items over \$10,000 and 10% for items \$10,000 and under, for each lot purchased on-line. All bidders are required to register to bid through Proxibid.

**Sales Tax:** Since these items are being sold pursuant to court order #2023-GN-1683, the Commonwealth of Pennsylvania considers this an isolated sale and does not require the auction company to collect sales tax.

**Inspection:** Items will be available for inspection weekdays beginning (1) week prior to auction, starting Wednesday, October 23, 2024 from 8:00AM until 4:00PM or sale day morning beginning at 7:00AM. The site is closed for the weekend. (Real Estate can be inspected by appointment – call auction company)

**Removal:** After complete payment items can be removed sale day until 4:00pm. Items may also be removed Thursday and Friday, October 31st and November 1st and Monday thru Wednesday, November 4th thru 6th, from 8:00AM until 4:00PM. All items must be removed by Wednesday, November 6, 2024 at 4:00PM.

## Sale Site Phone: (800) BID-N-BUY • Sale Site Fax: (888) 859-8958

### REAL ESTATE

**Wednesday, October 23, 2024 – 10:00AM**

**Live – Onsite**

**“Sold As-Is Subject to Creditor’s Immediate Confirmation”**

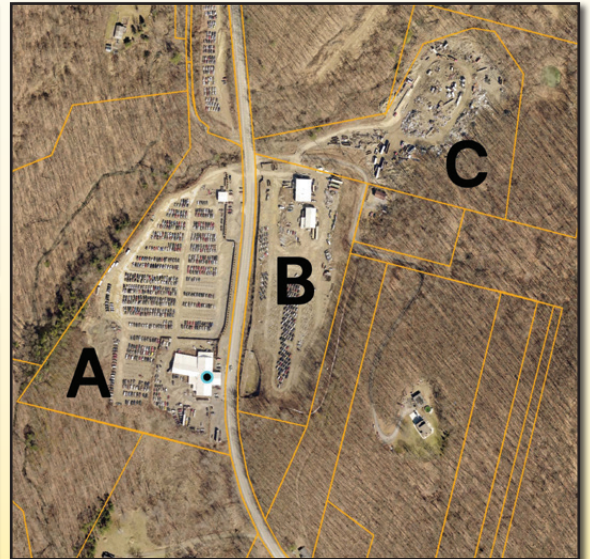
**Approximately (31+/-) Total Acres with all improvements and no contingencies identified as tax parcels: #14-11-4, #14-11-4-1, and #14-11-10.**

**Terms:** 10% Down auction day and complete settlement within (120) days.

**Method of Sale:**

- Lot A (Parcel #14-11-4 Main Office and U Pull-It)
- Lot B (Parcel #14-11-4-1 Auto Recycling Yard)
- Lot C (Parcel #14-11-10 Scrap Yard)
- Lot D (All Parcels Together)

**Format:** Lots A, B, and C will be offered separately. The high bids will be added together to establish the starting bid for the entirety offering of Lot D. (Bidders may request offering of other combinations, i.e. Lots A & B, Lots B & C, or Lots A & C)



REAL ESTATE

The Real Estate will be sold as-is, by approval of the creditor, to the higher of the total individual or combined bids.

## For Complete Listing Please See Our Photo Library at [www.hunyady.com](http://www.hunyady.com)!

## CAR CRUSHERS AND PORTABLE BALER



19 OVERBUILT 10-HS

**2019 OVERBUILT Model 10-HS, 22' Portable High Speed Hydraulic Car Crusher**, s/n 1ZPKU4520K1086708, powered by JD PE6068HF285 Tier 3 diesel engine, equipped with 159 ton crushing force, optional 22' charge box with 10' opening, two crushing cycles – flat and rocking, auto up cycle, high speed oil bypass system, oil recovery system with dual sludge traps, water separating valve and 400 gallon on-board waste oil storage tank, on-board air compressor with 100' hose reel, wireless remote control, 400 gal. fuel tank with auxiliary transfer pump with hose and filling nozzle, hydraulic landing gear, and 11R22.5 tires. In good to very good condition. (753 Hours)



12 AL-JON 400XL

**2012 AL-JON Model 400XL Portable Hydraulic Logger/Baler**, s/n 15073, powered by Cummins QSB173 diesel engine, equipped with Builtrite material handling boom with rotating grapple, variable bale size, enclosed ROPS cab with heat and air conditioning, mounted on tandem axle carrier with (4) hydraulic stabilizers and 11R22.5 tires. In good condition with good tires. (4,758 Hours)

**AL-JON Model PPCC #7 Portable Hydraulic Car Crusher**, s/n 382129710, equipped with hydraulic power unit, powered by Detroit 4-53 diesel engine, 21' bed with hydraulic ram, hydraulic outriggers, auto cycling, and mixed tires. In fair condition with fair to good tires.

## RUBBER TIRED AND CRAWLER LOADERS AND ATTACHMENTS

**2010 CATERPILLAR Model 930H Rubber Tired Loader**, s/n DHC01761, powered by Cat/Perkins 6 cylinder diesel engine and powershift transmission, equipped with Cat general purpose loader bucket with bolt-on cutting edge, hydraulic coupler, auxiliary hydraulics, Tera model TR-1-NK-HE hydraulic bucket scale, enclosed ROPS cab with heat and air conditioning, and 20.5R25 tires. In good condition with good tires.



10 CAT 930H

**2000 CATERPILLAR Model 924G Rubber Tired Loader**, s/n 9SW00718, powered by Cat 3056 diesel engine and powershift transmission, equipped with Cat general purpose loader bucket with bolt-on cutting edge, hydraulic coupler, auxiliary hydraulics, enclosed ROPS cab with heat, and 17.5x25 tires.



00 CAT 924G

In fair condition with good tires. (Missing All Front Glass; Seat Poor; Heat Not Working)

**2001 HYUNDAI Model HL740-3 Rubber Tired Loader**, s/n L701GA10512, powered by Cummins 6 cylinder diesel engine and powershift transmission, equipped with general purpose loader bucket with bolt-on cutting edge, hydraulic coupler, enclosed ROPS cab with heat, and 20.5R25 tires. In fair to good condition with good tires.

**1998 CATERPILLAR Model 953C Crawler Loader**, s/n 2ZN01819, powered by Cat 3116 diesel engine and hydrostatic transmission, equipped with general purpose loader bucket with teeth and bolt-on segments, enclosed ROPS cab with heat and air conditioning, and 20" DBG pads.



98 CAT 953C

In fair to good condition with fair to good undercarriage.

(3) **SAS 78"** Fork Attachments (Cat 930 and 924) • **CAT 48"** Fork Attachment (Cat 930 and 924) • **ROCKLAND 72"** Fork Attachment

## HYDRAULIC EXCAVATORS AND MAGNETS



'08 HITACHI ZX280LCN-3

**2008 HITACHI Model ZX280LCN-3 Hydraulic Excavator**, s/n 031755, powered by Isuzu 4 cylinder diesel engine and hydraulic drive, equipped with 10' dipper stick, 12' boom, Ostermeier model AG/SA 12' boom extension, s/n 420041, Kinshofer 38" x 54" clam grapple (rotation no working), 2.8 ton additional counterweight, rearview camera, auxiliary hydraulics, and 23-3/4" TBG pads. In good condition with good undercarriage. (Boom Cracked; Extension Cracked)



'11 CASE CX160B

**2011 CASE Model CX160B Hydraulic Excavator**, s/n SAF1651, powered by Mitsubishi 4 cylinder diesel engine and hydraulic drive, equipped with 10' dipper stick, Strickland 36" digging bucket, Strickland hydraulic coupler, 24" mechanical thumb, enclosed ROPS cab with heat and air conditioning, and 23.5" TBG pads. In fair condition with fair undercarriage.

**1999 LINK-BELT Model 4300 Quantum Hydraulic Excavator**, s/n LE219-9740, powered by Cummins 6 cylinder diesel engine and hydraulic drive, equipped with 12' dipper stick, Ohio model 48LS magnet, s/n 23360, magnet generator, powered by Mitsubishi 4 cylinder diesel engine (0,226 hours), and 31.5" TBG pads. In fair condition with fair undercarriage. (Missing Seat; Bad Computer)

**OHIO 36B04T0, 36" Magnet**, s/n 14842 • **ERIE 30" Magnet**

## TRUCK TRACTORS



(1) OF (2) '20 MACK AN64T ANTHEM

**2020 MACK Model AN64T Anthem Tandem Axle Truck Tractor**, powered by MP8, 505HP diesel engine and automatic transmission, equipped with 40,000# rears, 12,000# front axle, wetline, air slide pin-able 5th wheel, air ride suspension, single frame, aluminum wheels, def system, 3-stage engine brake, 185" wheelbase, power windows and locks, power heated mirrors, cruise control, air conditioning, and 11R22.5 tires. In good to very good condition with good tires. (161,466 Miles)

**2020 MACK Model AN64T Anthem Tandem Axle Truck Tractor**, powered by MP8, 505HP diesel engine and automatic transmission, equipped with 40,000# rears, 12,000# front axle, wetline, air slide pin-able 5th wheel, air ride suspension, single frame, aluminum wheels, def system, 3-stage engine brake, 195" wheelbase, 52,000# GVWR, power windows and locks, power heated mirrors, cruise control, air conditioning, and 11R22.5 tires. In good condition with good tires. (120,514 Miles) (Missing Bumper, Grill, and Brush Guard; After Cooler and A/C Radiator Damage)

**2019 MACK Model AN64T Anthem Tandem Axle Truck Tractor**, powered by MP8, 505HP diesel engine and automatic transmission, equipped with 40,000# rears, 12,000# front axle, air slide 5th wheel, air ride suspension, single frame, aluminum wheels, def system, 3-stage engine brake, 185" wheelbase,



'19 MACK AN64T ANTHEM

52,000# GVWR, power windows and locks, power heated mirrors, cruise control, air conditioning, and 11R22.5 tires. In good condition with very good to excellent tires. (175,837 Miles)

**1999 KENWORTH Model T800 Tandem Axle Truck Tractor**, powered by Cat 3406 diesel engine and Fuller 10 speed transmission, equipped with wetline, air slide 5th wheel, air ride suspension, single frame, 3-stage engine brake, 190" wheelbase, aluminum front wheels, cruise control, air conditioning, and 275/80R22.5 tires. In fair to good condition with good tires.



'99 KENWORTH T800

**1996 INTERNATIONAL Model 8200 Tandem Axle Truck Tractor**, powered by Detroit 60 Series, 300HP diesel engine and Fuller 13 speed transmission, equipped with 40,000# rears, 12,000# front axle, manual slide 5th wheel, spring suspension, 145" wheelbase, 52,000# GVWR, and 295/75R22.5 tires. In fair condition with fair tires.

## DUMP TRAILERS, 40 TON LANDOLL, CAR HAULER, AND LOG LOADER

**2020 JMH Model J4299DBMAH, 42' Tandem Axle Frameless Dump Trailer**, equipped with tub style steel dump body with swing gate, wired for electric tarp, Hardox lining, 70,000# GVWR, spring suspension, aluminum wheels, and 11R22.5 tires. In good condition with fair to good tires.



'20 JMH 42' FRAMELESS

**2020 JMH Model J4299DBMAH, 42' Tandem Axle Frameless Dump Trailer**, equipped with tub style steel dump body with swing gate, electric tarp, Hardox lining, 70,000# GVWR, spring suspension, aluminum wheels, and 11R22.5 tires. In good condition with fair to good tires. (Tailgate Damage; One Tarp Arm Broken; Landing Gear Bottom Plates Bent; Aluminum Tarp Cover Damaged)



'20 JMH 42' FRAMELESS

**2007 MONTONE Model SD30606060, 30' Tandem Axle Dump Trailer**, equipped with steel dump body with swing gate, spring suspension, 75,000# GVWR, and 11R24.5 tires. In fair to good condition with good tires. (Missing 2 Tires)



'07 MONTONE 30'

**2020 LANDOLL Model 440BNG, 40 Ton Tandem Axle Hydraulic Tilt Trailer**, equipped with 20,000# hydraulic winch, 7' top deck, 32" transition, 40' main deck, 97,000# GVWR, (6) aluminum and (1) steel wheels, Air-Weigh trailer scale, and 235/75R17.5 tires. In good condition with good tires. (Deck Fair)



'20 LANDOLL 40 TON

**2013 JMH Tandem Axle Double Drop Crushed Car Trailer**, equipped with 13' front deck, 22' center well, 14' rear deck, cable tie down, spring suspension, and 295/75R22.5 tires. In good condition with good tires.



'13 JMH CRUSHED CAR TRAILER

**1998 PRENTICE Model 310E (992299) Portable Log Loader**, s/n Z208334, powered by JD 310 diesel engine, equipped with 60" hydraulic rotating grapple, enclosed ROPS cab with heat, mounted on Evans tandem axle carrier with (4) hydraulic outriggers and 11R22.5 tires. In fair condition with fair to poor tires. (Two Flat Tires; Bad Swivel) (No Title)

## FORKLIFTS

**TOYOTA Model 42-5FG25, 5,000# Pneumatic Tired Forklift**, s/n 79376, powered by 4 cylinder gas engine and shuttle transmission, equipped with 48" forks, 169" 3-stage mast, mast tilt, side sift, 7.00x12 front and 6.70x9 rear tires. In fair to good condition with fair to good tires.



TOYOTA 5,000#

**TCM Model FCG25N5, 5,000# Solid Tired Forklift**, s/n 3181054, powered by Nissan 4 cylinder propane gas engine and shuttle transmission, equipped with 42" forks, 106.3" 2-stage mast, mast tilt, 18x9x12 front and 16x16x10 rear tires. In good condition with good tires.  
**JOHN DEERE Model 5K1D, 5,000# Rough Terrain Forklift**, s/n 132484, powered by 4 cylinder gas engine and shuttle transmission, equipped with 48" forks, 3-stage mast, mast tilt, side shift, ROPS canopy, 13.00x6x28 front and 235/75R15 rear tires. In fair to good condition with (3) good and (1) scrap tires.

## GENERATOR

**ONAN Model 250DFBE35215A Skid Mounted Generator**, s/n H890260762, powered by Cummins NT855-65, 390HP diesel engine, equipped with 250KW/312.5KVA 3-phase standby, mounted in skid mounted enclosure with 75 gallon fuel tank. In good condition.

## TRUCK SCALE



B-TEK 200,000# TRUCK SCALE

**B-TEK Model BT-7211-200-FESD-SL-A, 200,000# Pitless Truck Scale**, s/n TS-03198009, equipped with 11' x 72' 3-section steel deck, B-Tek model DD700 digital readout, ticket printer, outside readout, 20' overseas storage container/scale house with man door, front window, and window air conditioning unit. In good condition.

## MOTOR HOME

**2001 NEWMAR/ SPARTAN Model MM2242 Kountry Aire, 42' Motor Home**, powered by Cummins ISC, 350HP diesel engine and Allison automatic transmission, equipped with computerized leveling system, rearview monitor, heater mirrors, full kitchen, washer and dryer, (1) bedroom, (2) pushouts, lavatory with shower, cruise control, air conditioning, and 275/80R22.5 tires. In good condition with good tires. (32,341 Miles)



'01 NEWMAR-SPARTAN 42'

## ROLLBACK TRUCKS

### 2015 FREIGHTLINER Single Axle Rollback Truck,

powered by Cummins 6 cylinder diesel engine and automatic transmission, equipped with Jerr-Dan model 22SRR6T-W-LP, 12,000# capacity, 22' rollback body, s/n 0220007579, 25,500# GVWR, rear tow bar, dolly wheels, aluminum wheels, def system, power windows and locks, power heated mirrors, cruise control, air conditioning, and 245/70R19.5 tires. In good condition with good tires.



'15 FREIGHTLINER ROLLBACK

**2008 FORD F-650 XLT Super Duty Single Axle Rollback Truck,** powered by Cummins 6.7L diesel engine and automatic transmission, equipped with Jerr-Dan model 21RRSB, 10,000# capacity, 21' rollback body, s/n 99381, 26,000# GVWR, rear tow bar, power windows and locks, power heated mirrors, cruise control, air conditioning, and 245/70R19.5 tires. In good condition with fair to good tires.

**1984 MACK Single Axle Rollback Truck,** powered by 6 cylinder diesel engine and 5 speed transmission, equipped with Jerr-Dan 22' rollback body with bed winch, chain dogs, and stake pockets, 35,280# GVWR, aluminum wheels and 11R22.5 tires. In fair to poor condition with fair tires (1 poor). (Not Running)

## SERVICE TRUCK AND VAN BODY TRUCK

**1990 GMC Pickpick Service Truck,** powered by Cat 3116, 215HP diesel engine and 5 speed transmission with 2 speed rear, equipped with Auto Crane 6000H service crane, 11' open service body with 20" work bumper, Champion gas air compressor, 275 gallon oil tank, (2) manual outriggers, and 11R22.5 tires. In fair condition with fair tires. (Bad Transmission)

**1998 GMC Model C6500 Single Axle Van Body Truck,** powered by V-8 gas engine and automatic transmission, equipped with Morgan 25' FRP van body with rollup rear door, ramp pocket, 25,950# GVWR, tow package, and 11R22.5 tires. In good condition with good tires. (Salvage Certificate)

## PICKUP TRUCKS AND SEDAN

**2011 FORD Model F-250XL Super Duty, 4x4 Pickup Truck,** powered by 8 cylinder gas engine and automatic transmission, equipped with 8' bed with spray-on liner, electric lift gate, rear window guard with light bar, power windows, locks, and mirrors, cruise control, air conditioning, and 265/70R17 tires. In fair condition with good tires.

### 2007 RAM Model 3500HD, 4x4 Crew Cab Pickup Truck,

powered by Cummins diesel engine and automatic transmission, equipped with 8' bed with spray-on liner, 100 gallon fuel cell with electric pump, torch set with bottle cage, rear window guard, dual rear wheels, tow package, power windows, locks, and mirrors, cruise control, air conditioning, and 235/85R17 tires. In fair to good condition with good tires. (Reconstructed Title)



'07 RAM 3500HD 4X4

**2007 NISSAN Versa 4-Door Hatch Back Sedan,** powered by 4 cylinder gas engine and automatic transmission, equipped with power windows and locks, cruise control, air conditioning, and 185/65R15 tires. In good condition with good tires.

## TIMED ONLY AUCTION THURSDAY, OCTOBER 31, 2024

### CONTAINERS, SCALES, CRUSHERS, AND BALER



#### ROLLOFF CONTAINERS

(13) 20 Yard Rolloff Containers • (4) 30 yard Rolloff Containers • (2) 40 Yard (20 yard with welded on extension) Rolloff Containers

(2) **B-TEK** Model BT-FC-4848S-4SQ, World Weigh 4' x 4', 5,000# Portable Platform Scales, with World Weigh BWS, 5,000# x 1# digital readouts

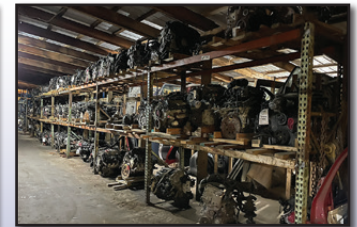
Electric Hydraulic Can Crusher, s/n unknown, powered by 3-phase electric motor, equipped with 36' x 10' feed conveyor. In good condition. (Not Running - Electrical Problem)

**PHILADELPHIA TRAMRAIL** Hydraulic Baler, s/n J94T6951, powered by 3HP, 3-phase electric motor, equipped with 60" x 36" x 48" high chamber. In good condition.



PHILADELPHIA TRAMRAIL BALER

### SALVAGE



#### ENGINES AND TRANSMISSIONS

Approximately (150-200) Salvage Engines, Transmissions, and Differentials

### CAR LIFTS AND SHOP EQUIPMENT

**2014 CHALLENGER** Model CL10V3, 10,000# Car Lift, s/n 140500000106377, single phase electric • **2013 MAGNUM** Model XL-9, 9,000# Car Lift, s/n 51306, single phase electric • **ROTARY** Model SPOA9-200, 9,000# Car Lift, s/n SPA0082162, single phase electric • **ROTARY** Model SP9N-400, 9,000# Car Lift, s/n ASS03D0045, single phase electric

**LINCOLN** 256 Power Mig Portable Welder • **LINCOLN** Ranger 225 Welder/Generator, Kohler gas • Oxygen Acetylene Torch Set, with cart • **COATS** 5045 Rim Clamp Tire Machine • **COATS** RC45 Rim Clamp Tire Machine • **GENSCO** DTX4/600 Hydraulic Shear, 220/460 volt electric motor • **STRIP-TEC** Wire Stripper, single phase electric • **CRAFTSMAN** 15.5" 8-Speed Pedestal Drill Press • **PORTER CABLE** Pedestal Band Saw • **DEWALT** DW871, 14" Chop Saw • **BRUT** 101H Sandblast Pot • **DSR127** Pro-Series 8-Station Battery Charger • **MARQUETTE** 500 Batter Charger • Hydraulic Floor Jacks • **SUNEX** 7793B, 1,000# 2-Stage Hydraulic Transmission Jack • 2-Stage Portable Hydraulic Transmission Jack • **KOBALT** 26 Gallon, 126PSI Portable Air Compressor, 1.8HP electric • **NAPA** 82378VAT, 7.5HP 2-Stage Electric Air Compressor, s/n 00011336, 230 volt, single phase • Rolling Gantries • (5) 4-Wheel Material Carts • (28) Wheelbarrows, with solid tires • Jack Stands • Pallet Jack • Banding Carts and Tools • Air Pig • Ladders • 18" x 40' Accordion Slide Conveyor • **NESTA** 175, 18" x 30' Portable Accordion Roller Conveyor • Portable Space Heaters • Shop Vacs • (3) Electric Blowers • Shop Lights • **STIHL** TS420 Demo Saw • (3) 40' Overseas Storage Containers • 40' Aluminum Trailer Body/Storage Container