

1440 COWPATH RD. • HATFIELD, PA 19440
215/361-9099 • Fax: 215/361-9212
www.hunyady.com



(2) 10,000# GRADALLS



(2) OF (5) 4X4 PICKUPS



(2) KNUCKLEBOOM TRUCKS

PRE-SORTED
FIRST CLASS MAIL
US POSTAGE
PAID
UPPER DARBY, PA
PERMIT #45



**ABSOLUTE AUCTION AND
SEALED BID AUCTION
COMPLETE LIQUIDATION**

EAST COAST HOIST, INC.

Telford, Pennsylvania

WEDNESDAY

NOVEMBER 6, 2024

Sealed Bid Auction Closing

WEDNESDAY

NOVEMBER 13, 2024

**Live-Broadcasted, Virtual
Absolute Auction at 9:00AM**

WEDNESDAY

NOVEMBER 13, 2024

**Timed Auction Begins
Closing at 12:00 Noon**



NO MINIMUMS • NO RESERVES



EAST COAST HOIST, INC.



Notice: Mr. Ted Harrison, the owner/founder of East Coast Hoist, Inc., began his career as a high steel worker in Philadelphia as a Union member, at the young age of 17. By the time Mr. Harrison was in his mid-30's, he started East Coast Hoist, which sold, rented and installed construction personnel/material hoists throughout the region. Now, after (44+) years as a leader in this industry from Florida and Texas through the North East metropolitan corridor, Mr. Harrison has commissioned Hunyady Auction to sell all assets at Absolute Auction, coupled with an offering of currently installed hoists under contract, via Sealed Bid Auction.

Auctioneer's Note: This is a very unique opportunity to enter into or expand operations in this niche market of construction and personnel hoist rentals. Hoists, which are currently installed and on rent, will be offered via Sealed Bid Auction with the remainder of the rental contract in place. All Absolute Auction items located at the main yard in Telford, PA, will be sold via live-broadcasted, virtual absolute auction and timed auction.

Location: The live-broadcast, absolute auction and timed event auction items will be sold from the East Coast Hoist's yard located at 105 Keystone Dr, Telford, PA, 18969. The Sealed Bid Auction items will be offered from their current locations on active rental jobs. **(Please Note: There will be NO LIVE BIDDING onsite)**

Format:

Wednesday, November 6, 2024 - Sealed Bid Auction closes at 3:00PM, of Erected Hoists with contracts and remaining rental income.

Wednesday, November 13, 2024 9:00AM - Live Virtual Broadcast Auction. Equipment, Rolling Stock and (10) Complete Hoist Systems. There will be no live bidding from the site.

Wednesday, November 13, 2024 12:00 Noon – Timed Auction. Hoist Cars, Components, Accessories, Parts, Rigging and Shop Tools. Bidding begins Friday, November 8, 2024 9:00AM and Lots Start Closing Wednesday, November 13, 2024 12:00 Noon.

Payment Terms: Complete payment immediately after receipt of invoice by wire transfer or credit card only. Credit card payments will be charged a 3% processing fee. No payments will be accepted at the auction site.

Financing: Financing is available, please contact Susan (215) 361-9099 at the auction company for details.

Online Bidding: Live internet bidding will be provided by Proxibid. Proxibid will charge an Internet Service Provider Fee of 5% to the successful internet bidder for items over \$10,000 and 10% for items \$10,000 and under, for each lot purchased on-line. All bidders are required to register to bid through Proxibid.

Sales Tax: Since this contractor is selling items that are considered inventory and sold (rented) in the course of his business, the Commonwealth of Pennsylvania requires the auction company to collect sales tax at the rate of 6%, unless presented with a valid exemption at time of transaction. Sales Tax is NOT due on titled vehicles and trailers until the time of registration.

Inspection: Items will be available for inspection (1) week prior to auction, during weekdays from 8:00AM – 4:00PM, beginning Wednesday, November 6th.

Removal: After complete payment items can be removed sale day until 4:00pm. Items may also be removed weekdays from 8:00AM – 4:00PM thru Wednesday, November 20th. All items must be removed by Wednesday, November 20, 2024 unless extended loadout has been granted.

Sale Site Phone: (800) BID-N-BUY • Sale Site Fax: (888) 859-8958

**ABSOLUTE AUCTION
AND SEALED BID AUCTION
COMPLETE LIQUIDATION**

EAST COAST HOIST, INC.

**WEDNESDAY NOVEMBER 6, 2024
& WEDNESDAY NOVEMBER 13, 2024
Telford, Pennsylvania**

SEALED BID AUCTION

SEALED BID CLOSING

Wednesday, November 6, 2024 @ 3:00pm Eastern

The following hoists are installed on projects and are currently operating. These hoists will be offered with current rental contracts in place and the remainder of the rental income stream. They will be offered as packages, with multiple hoists being offered per lot, based on geographical regions.

Sealed Bid Packets will be provided upon request and will include: terms and conditions; bidding instructions; a description of the hoists being offered within each lot; a copy of the rental agreement, and the total amount of income remaining with each hoist.

TERMS AND CONDITIONS:

- East Coast Hoist reserves the right to accept or reject the bids submitted. Notification of award will be within 24 hours of bid closing.
- Bidders must have proper licensing and insurance as required per geographical region.
- Successful Bidders will be invoiced for 10% of their purchases, which will be due upon notification of award, via wire transfer. The balance will be due upon completion of the Live and Timed Auctions on November 13, 2024.

Please contact Hunyady Auction Co for more information and to request a Sealed Bid Packet.

Philadelphia, Pennsylvania – The Mark: (2) TORNBORG

Model FC-7000 Dual 7,000# Hoists, 385' total, 210' currently installed. (Rental Remaining – (16) Months)

Newark, New Jersey – Essex Court House: (2) TORNBORG

Model FC-8000 Dual 8,000# Hoists, 180' height installed. (Rental Remaining – (6) Months)

Wilmington, Delaware – Neumours: (1) TORNBORG Model H-6000 Single 6,000# Hoist, 80' height installed. (Rental Remaining – (5) Months)

Bethesda, Maryland – Exxon: (2) TORNBORG Model FE-7000 Dual 7,000# Hoists, 300' total, 100' currently installed. (Rental Remaining – (10) Months)

Washington, DC – Henley West: (1) TORNBORG Model FC-7000 Single 7,000# Hoist, 100' height installed. (Remaining Rental – (2) Months)

Washington, DC

– Henley East: (1)

TORNBORG

Model FC-7000 Single 7,000# Hoist, 100' height installed. (Rental Remaining – (3) Months)

Reston, Virginia –

OB5: (1) TORNBORG

Model FC-7000 Single 7,000# Hoist, 140' height installed. (Rental Remaining – (2) Months)

Reston, Virginia –

RB5: (2) TORNBORG

Model FC-7000 Dual 7,000# Hoists, 325' height installed. (Rental Remaining – (9) Months)



ESSEX COURT HOUSE - NEWARK, NJ



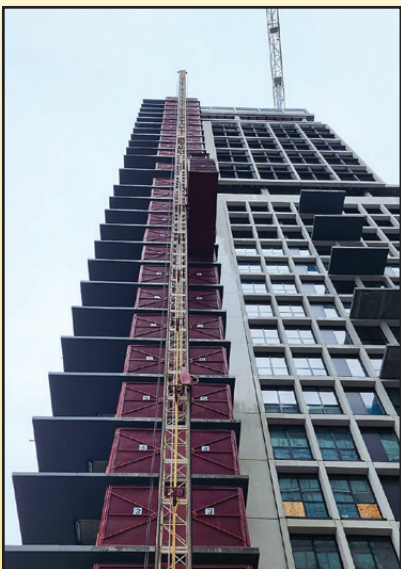
THE MARK - PHILADELPHIA, PA



NEUMOURS - WILMINGTON, DE



HENLEY WEST - WASHINGTON, DC



RB5 - RESTON, VA



OB5 - RESTON, VA



HENLEY EAST - WASHINGTON, DC

WEDNESDAY, NOVEMBER 6, 2024

PERSONNEL HOISTS



(10) COMPLETE HOIST SYSTEMS

(10) Complete Hoist Systems: (10) **TORNBORG FC-8000 & FC-7000** Dual Car Complete Hoist Systems will be sold as individual systems, with each lot containing; (2) Hoist Cars and Motors, Control Panels, 200' of Tower, Tower Bases, and Tower Ties.

GRADALLS AND FORKLIFTS

2002 GRADALL Model 544D-10, 10,000# 4x4 Rough Terrain Telescopic Forklift, s/n 0365166, powered by Cummins diesel engine and shuttle transmission, equipped with 55' 3-section telescopic boom, 48" forks, 4-wheel steering, (2) hydraulic stabilizers, ROPS canopy, and 14.00-24 tires. In good condition with good tires.



'02 GRADALL 544D-10, 10,000# 4X4

1996 GRADALL Model 534C-10, 10,000# 4x4 Rough Terrain Telescopic Forklift, s/n 0266041, powered by Cummins diesel engine and shuttle transmission, equipped with 40' 3-section telescopic boom, 48" forks (not mounted), 4-wheel steering, (2) hydraulic stabilizers, ROPS canopy, and 14.00-24 tires. In fair to good condition with fair to good tires.



'96 GRADALL 534C-10, 10,000# 4X4

TCM Model FCG25-2H, 4,300# Solid Tired Forklift, s/n A40M00157, powered by LP gas engine and shuttle transmission, equipped with 189" 3-stage mast, 42" forks, side shift, FOPS canopy, and non-marking solid tires. In good condition with good tires.



TCM FCG25-2H, 4,300#

TCM Model FG30N6, 6,000# Cushion Tired Forklift, s/n 3360368, powered by LP gas engine and shuttle transmission, equipped with 189" 3-stage mast, side shift, 48" forks, FOPS canopy, 28x9-15 front and 6.50-10 rear tires. In fair to good condition with good tires.

TRUCK CRANE

1985 GROVE Model TMS520B, 20 Ton Hydraulic Truck Crane, s/n 68466, powered by Detroit 8.2L diesel engine and Fuller Roadranger 13 speed transmission, equipped with 32'-80' 3-section hydraulic boom, Kruger anti-two-block, single hoist, 20 ton 3-sheave hook block, weighted hook ball, (4) hydraulic outriggers, front stabilizer, 11R22.5 rear and 425/65R22.5 front tires. In good condition with fair to good tires.



'85 GROVE TMS520B, 20 TON

KNUCKLEBOOM TRUCKS

2017 INTERNATIONAL Model 4300 Single Axle Knuckleboom Truck, powered by Cummins ISB6.7, 300HP diesel engine and automatic transmission, equipped with 2009 Palfinger PK8501 knuckleboom crane, 3-section hydraulic boom to 24', 18' flatbed, ratchet straps, (2) hydraulic outriggers, spring/air suspension, 19,000# rear axle, 11,000# front axle, aluminum wheels, cruise control, air conditioning, and 11R22.5 tires. In good condition with good tires.



'17 INTERNATIONAL 4300 WITH PALFINGER PK8501

2005 FREIGHTLINER Model Business Class M2 112 Tandem Axle Knuckleboom Truck, powered by Mercedes OM460, 450HP diesel engine and Eaton Fuller 10 speed transmission, equipped with National Crane N100/31-38, 13,750# knuckleboom crane, 3-section hydraulic boom with manual fly to 38', 16'6" flatbed, (2) hydraulic stabilizers, engine brake, tow package with air, spring suspension, 40,000# rear and 14,600# front axles, aluminum wheels, cruise control, air-conditioning, and 11R22.5 tires. In good condition with good tires.



'05 FREIGHTLINER BUSINESS CLASS M2 WITH NATIONAL N100

TRUCK TRACTOR AND TRAILERS



'95 PETERBILT 379 AND '03 TRANSCRAFT 48' STEP DECK

1995 PETERBILT Model 379 Tandem Axle Truck Tractor, powered by Cat 3406 diesel engine and Eaton Fuller 10 speed transmission, equipped with air slide 5th wheel, single frame, 3-stage engine brake, Peterbilt Air Leaf suspension, 38,000# rear and 12,000# front axles, aluminum wheels, heated mirrors, cruise control, air-conditioning, and 295/75R22.5 tires. In good condition with very good tires.

2003 TRANSCRAFT 48' Spread Axle Step Deck Trailer, equipped with 11' upper deck, 37' lower deck, 102" width, aluminum deck, 10' spread axle, stowable 14' rear ramps and 7' upper deck ramps, air ride suspension, ratchet straps, aluminum wheels, and 255/70R22.5 tires. In good condition with good tires.

1984 TRANSCRAFT Model TL90K-42, 42' Spread Axle Flatbed Trailer, equipped with 10'2" spread axle, 96" width, steel deck, ratchet tie straps, air ride suspension, 100,000# GVWR, and 275/80R24.5 tires. In fair to good condition with fair to good tires.

2017 TRANSCRAFT Model 554C, 48' Spread Axle Step Deck Trailer, equipped with 11' upper deck, 37' lower deck, 102" width, aluminum deck, 10'2" spread axle, air ride suspension, aluminum wheels, ABS braking, and 80,000# GVWR. In good condition with good tires.



'17 TRANSCRAFT 554C, 48' STEP DECK

UTILITY AND PICKUP TRUCKS

2017 GMC Model Sierra 3500, 4x4 Extended Cab Utility Truck, powered by 6.0L gas engine and automatic transmission, equipped with 8' Reading utility body, tow package, power windows, locks, and mirrors, air conditioning, and 265/70R16 tires. In good condition with good tires.



'17 GMC SIERRA 3500 4X4

2016 FORD Model F-350 XL Super Duty 4x4 Extended Cab Pickup Truck, powered by 6.2L gas engine and automatic transmission, equipped with 8' bed with cross tool box, tow package with electric, power window and locks, cruise control, air conditioning, and LT275/70R18 tires. In good condition with very good tires.



'16 FORD F-350 XL SD 4X4

2014 FORD Model F-350 Lariat Super Duty, 4x4 Crew Cab Pickup Truck, powered by Powerstroke 6.7L diesel engine and automatic transmission, equipped with 6.5' bed, Platinum Edition, full power package, sun roof, leather interior, and navigation. In good condition with good tires.



'14 FORD F-350 LARIAT SD 4X4

2014 FORD Model F-350 XLT SD, 4x4 Extended Cab Pickup Truck, powered by 6.2L gas engine and automatic transmission, equipped with 8' bed with cross tool box, FX4 off road package, power windows and locks, cruise control, air-conditioning, alloy wheels, and 275/70R18 tires. In good condition with good tires.

2017 FORD Model F-250 XLT, 4x4 Extended Cab Pickup Truck, powered by 6.2L gas engine and automatic transmission, equipped with 8' bed with cross and side mounted tool boxes, tow package, power package, air conditioning, and LT275/70R18 tires. In good condition with good tires.



'17 FORD F-250 XLT 4X4

2015 GMC Model Sierra 1500 SLE, 4x4 Extended Cab Pickup Truck, powered by 5.3L gas engine and automatic transmission, 6.5' bed with cross box and side mounted tool boxes, tow package, power package, and air conditioning. In good condition with good tires.



'15 GMC SIERRA 1500 SLE 4X4

TIMED AUCTION ITEMS

Hoist Cars: (85+/-) **TORNBORG** Rack and Pinion Hoist Cars to include: FC8000; FC7000, H7000; H and PH 6000; and H and PH5000; and HEK 5000.

VERY Large Quantity of Hoist Accessories to Include: (6,000 linear ft +/-) Hoist Tower (some heavy wall) • (40 +/-) Hoist Motors • (350 +/-) Tower Ties • Tower Bases • Doors and Screens • Counterweights • Communication Systems; Power Cord; Trolleys; Gin Poles; Gear Boxes; Motors and Hoist Parts and Components

CHAMPION Model MHT-50, 5,000# Self-Erecting Portable Material Hoist, s/n unknown, powered by 45HP electric motor, equipped with (19) 12' tower sections to 228' and 12'6" x 5' hoist car. In fair condition.

(2) SPIDER ST-180 Personnel Hoist Baskets, 1,250# capacity, 220 VAC, 500' max



HOIST CARS



HOIST TOWER



HOIST MOTORS



TOWER TIES



TOWER BASES



DOORS AND SCREENS



COUNTERWEIGHTS



(2) SPIDER ST-180 HOIST BASKETS

RIGGING

TIRAK XE3050, 6,600# Material Hoist • (3) **TIRAK** XE1020P, 2,400# Material Hoists • **GRIPWINCH** GXE1023, 2,400# Material Hoist • **HARRINGTON** 1 Ton Electric Hoist, 120 volt • Chain Hoists, Chain Falls, Beam Trolleys, Chain and Cable Spreaders, Clevis Hooks, Bolts and Hardware

SHOP AND CONTRACTORS TOOLS

MILLER Millermatic 252, 200 Amp MIG Welder • **L-TEC** Svi450i MIG Welder, with 4HD wire feed • **LINCOLN** Powermig 225C MIG Welder • **MILLER** SRH-333 Welding Power Source, with stick welding leads • **LINCOLN** SP135 MIG Welder, 110 volt • **CHICAGO ELECTRIC** 60767 Plasma Cutter • (2) Oxygen Acetylene Torch Outfits, with cart • (3) Steel Welding Tables, with vise • **PITTSBURGH** Rolling Gantry, with electric hoist • **CAMPBELL HAUSFELD** Belt Driven Air Compressor, 120 volt • **ALBRIGHT** 90 Ton Shop Press • **CAROLINA** 30 Ton Shop Press • **CENTRAL HYDRAULICS** 12 Ton Hydraulic Pipe Bender, with dies • **WELLSAW** 850 Horizontal Metal Cutting Band Saw, with steel work tables • **DEWALT** Abrasive Chop Saw • **UNIVERSAL** B-2 Sandblast Cabinet • **GRIZZLY** G7948, 1/2" Floor Drill Press • **CRAFTSMAN** Drill Press, benchtop • **DEWALT** Pedestal Grinder • Arbor Press, manual • **HUSKY** Tool Chest • **CAROLINA** 6000 Engine Hoist • **PITTSBURGH** 4 Ton Floor Jack • **SAFETY KLEEN** Parts Washer • **MILWAUKEE** Porta Band Portable Band Saw • **HOUGEN** Rotabroach Magnetic Broaching Machine • **HOUGEN** HMD904 Magnetic Broaching Machine • (6) 6' – 10' Fiberglass Step Ladders • (2) Pallet Jacks • (5) Shop Fans • Banding Machine

**For Complete Listing Please See
Our Photo Library at www.hunyady.com!**

CLOSING NOVEMBER 13TH, 2024 - 12:00 NOON