



1440 COWPATH RD. • HATFIELD, PA 19440
 215/361-9099 • Fax: 215/361-9212
www.hunyady.com



‘22 JD 333G AND (2) 328D’S



‘23 CAT 306CR

PRE-SORTED
 FIRST CLASS MAIL
 US POSTAGE
PAID
 UPPER DARBY, PA
 PERMIT #45



‘19 CAT AP555F



ABSOLUTE AUCTION
VIRTUAL, LIVE
BROADCAST
COMPLETE
LIQUIDATION



‘20 AND ‘19 INT’L HX520SFA

WEDNESDAY
JULY 16, 2025 – 9:00AM

New Castle, Pennsylvania

NO MINIMUMS • NO RESERVES



NOTICE: In an effort to resolve irreconcilable differences, all construction equipment, trucks, trailers and tool assets of Smith Paving and Construction Co. will be sold via a live-broadcasted, Absolute Auction. All items in the auction are owned by Smith Paving and will positively sell to the highest bidder, without minimums or reserves. Most items have been purchased new by the owners and are ready to go to work – please plan to participate!

Location: The auction will be held at the Smith Paving office and yard facility at 2225 East Washington St. New Castle, PA 16101 (**Please Note: There will be NO LIVE BIDDING onsite**)

LIVE, VIRTUAL AUCTION: This auction is being conducted via *LIVE, VIRTUAL ONLINE ONLY*. *There will be NO LIVE BIDDING FROM THE SITE. ADDITIONALLY, there will be NO PAYMENTS accepted at the auction site! Payment must be paid either by wire transfer or credit card.*

Terms: Complete payment immediately after receipt of invoice by wire transfer or credit card only. Credit card payments will be charged a 3% processing fee.

Financing: **Financing is available, please contact Susan (215) 361-9099 at the auction company for details.**

Online Bidding: Live internet bidding will be provided by Proxibid. Proxibid will charge an Internet Service Provider Fee of 5% to the successful internet bidder for items over \$10,000 and 10% for items \$10,000 and under, for each lot purchased on-line. All bidders are required to register to bid through Proxibid.

Sales Tax: Since the items being sold were not normally sold in the course of this business, the Commonwealth of Pennsylvania considers this an isolated sale and does not require the auction company to collect sales tax.

Inspection: Items will be available for inspection beginning (1) week prior to auction, starting Wednesday, July 9, 2025 from 8:00AM until 4:00PM thru sale day morning beginning at 7:00AM. The site is closed for the weekend.

Removal: After complete payment items can be removed sale day until 4:00pm. Items may also be removed Thursday and Friday, July 17th and 18th and Monday thru Wednesday, July 21st thru 23rd, from 8:00AM until 4:00PM. All items must be removed by Wednesday, July 23, 2025 at 4:00PM.

Sale Site Phone: (800) BID-N-BUY • Sale Site Fax: (888) 859-8958

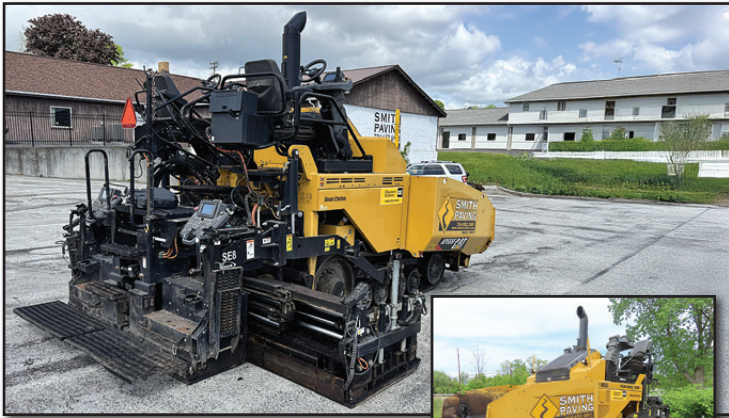
ABSOLUTE AUCTION VIRTUAL, LIVE BROADCAST COMPLETE LIQUIDATION



**WEDNESDAY
JULY 16, 2025 - 9:00AM
New Castle, Pennsylvania**

**For Complete Listing Please See
Our Photo Library at www.hunyady.com!**

ASPHALT PAVERS AND ROAD WIDENER



'19 CAT AP555F

2019 CATERPILLAR Model AP555F Crawler Paver, s/n AP500319, powered by Cat C4.4 diesel engine and hydraulic drive, equipped with Weiler SE8F, 8' – 15'8" electric heated screed, power slope, grade and crown, grade control equipped, and 16" smooth rubber tracks. In good condition with good tracks. (Meter Reads 2,331 Hours) (Low Hour Dealer Purchase)



'22 WEILER 385B

2022 WEILER Model 385B Crawler Paver, s/n 003512, powered by Cat C3.4B diesel engine and hydraulic drive, equipped with 8' – 15'6" electric heated screed, manual crown, and washdown system. In good condition with good undercarriage. (Meter Reads 2,388 Hours) **(Purchased New)**



'10 MIDLAND SPR-6

2010 MIDLAND Model SPR-6 Road Widener, s/n SPR6172, powered by JD diesel engine and hydrostatic transmission, equipped with 6' moldboard and right-side discharge. In good condition with good tires. (Low Hour Dealer Purchase)

ASPHALT ROLLERS AND TACK SPRAYER

2019 SAKAI Model SW654 Tandem Vibratory Roller, s/n 1SW53-30214, powered by Kubota diesel engine and hydrostatic transmission, equipped with 58" smooth drums, 2-frequency vibration, drum selector, spray system with pause timer, and ROPS canopy. In very good condition. (Meter Reads 672 Hours) **(Purchased New)**



'19 SAKAI SW654



'20 SAKAI SW354

2012 CATERPILLAR Model CB14 Tandem Vibratory Roller, s/n DTT01128, powered by Cat C1.1 diesel engine and hydrostatic transmission, equipped with 31.5" smooth drums, drum vibration selector, and folding rollbar. In good condition. (Meter Reads 561 Hours) (Low Hour Dealer Purchase)



'12 CAT CB14



'11 CAT CB24

LEEBOY Model L250 Tack Sprayer, equipped with Predator gas engine, propane heat, folding spray bars, hose reel and wand. In good condition. **(Purchased New)**



PORTABLE TAR KETTLE



LEEBOY L250

Portable Tar Kettle, propane heat, gravity flow, pintle tow. In good condition. **(Purchased New)**

HYDRAULIC EXCAVATORS

2023 CATERPILLAR Model 306CR Mini Hydraulic Excavator, s/n C6G609915, powered by Cat diesel engine and hydraulic drive, equipped with 6'6" dipper stick with hydraulic coupler and auxiliary hydraulics, 24" digging bucket, swing boom, hydraulic thumb, 6'6" backfill blade with hydraulic angle, rear camera, pattern changer, enclosed ROPS cab, and 16" rubber tracks. In very good condition with good tracks. (Meter Reads 782 Hours) **(Purchased New)**



'23 CAT 306CR

2012 JOHN DEERE Model 50D Mini Hydraulic Excavator, s/n 276689, powered by JD diesel engine and hydraulic drive, equipped with 5'6" dipper stick, manual coupler, 36" digging bucket, swing boom, hydraulic thumb, 6'7" backfill blade, enclosed ROPS cab, and 16" bolt-on street pads. In good condition with good undercarriage. (Meter Reads 7,098 Hours) **(Purchased New)**



'12 JOHN DEERE 50D

2013 JOHN DEERE Model 85D Hydraulic Excavator, s/n 017230, powered by JD diesel engine and hydraulic drive, equipped with 6'10" dipper stick with JRB hydraulic coupler, 36" digging bucket, swing boom, CP hydraulic thumb, 7'6" backfill blade, pattern changer, enclosed ROPS cab, and 18" bolt-on street pads. In fair to good condition with good undercarriage. (Not Running – Engine Seized) (Sheet Metal Damage to Rear) **(Purchased New)**

Excavator Buckets: 48" Digging, 36" Digging, 24" Digging, 18" Digging, 12" Digging

TRUCK TRACTOR AND TRAILER



2018 INTERNATIONAL Model LT625 Tandem Axle Truck Tractor, VIN# 3HSDZAPR8JN594886, powered by Cummins X15-505, 505HP diesel engine and automatic transmission, equipped with 40,000 lb rear axles, 13,220 lb front axle, air ride suspension, air slide 5th wheel, engine brake, differential lock, power divider lock, twin 70 gallon fuel tanks, 53,220 lb GVWR, aluminum wheels, power windows and locks, cruise control, air conditioning, and 11R22.5 tires. In good condition with good tires. (Odometer Reads 399,362 Miles) **(Transferrable Manufacturer Extended Warranty Remaining thru March 2026)**

'18 INT'L LT625

TRAILBOSS Model Paver Special Tandem Axle Trailer, equipped with 25' x 102" load deck, 6' beavertail, hydraulic ramps, 9'6" upper deck, air ride suspension, aluminum wheels, and 235/75R17.5 tires.



TRAILBOSS PAVER SPECIAL

SKID STEER LOADERS, MAINTAINER, AND ATTACHMENTS

2022 JOHN DEERE Model 333G Crawler Skid Steer, s/n 427468, powered by JD diesel engine and hydrostatic transmission, equipped with 84" general purpose loader bucket, power coupler, high flow hydraulics, 8-pin electric, joystick controls with pattern changer, enclosed ROPS cab with air conditioning, and rubber tracks. In good condition with good tracks. (Meter Reads 1,350 Hours) **(Purchased New)**



'22 JOHN DEERE 333G

2013 JOHN DEERE Model 328D Skid Steer, s/n 238324, powered by JD diesel engine and hydrostatic transmission, equipped with 84" general purpose loader bucket, manual coupler, standard hydraulics, 7-pin electric, joystick controls with pattern changer, enclosed ROPS cab with air conditioning, and 14-17.5 tires. In good condition with very good tires. (Meter Reads 5,171 Hours) **(Purchased New)**



'13 JOHN DEERE 328D

2012 JOHN DEERE Model 328D Skid Steer, s/n 223581, powered by JD diesel engine and hydrostatic 2-speed transmission, equipped with 84" general purpose loader bucket, power coupler, high flow hydraulics, 7-pin electric, joystick controls with pattern changer, enclosed ROPS cab with air conditioning, and 14-17.5 tires. In good condition with good tires. (Meter Reads 7,925 Hours) **(Purchased New)**

HUBER Model M850

Maintainer s/n unknown, powered by Ford 4 cylinder diesel engine and hydrostatic transmission, equipped with 9' moldboard, 6' front push blade, ROPS canopy, 10.00-16 front and 23.1-26 rear tires. In fair to good condition with good tires. (Meter Reads 3,235 Hours)

Skid Steer Attachments: JOHN DEERE Model CP30C 30" Milling Attachment, s/n 000020 • KENT Model F4 Hydraulic Demo Hammer • SWEEPSTER Model 7' Hydraulic Broom with Power Angle • BLUE DIAMOND Model 6' Hydraulic Broom with Power Angle • JOHN DEERE Model DB96 8' 6-Way Dozer Blade, s/n 896 • 48" Fork Attachment



'12 JOHN DEERE 328D



DUMP TRUCKS



20 INT'L HX520SFA

2020 INTERNATIONAL Model HX520SFA Tri-Axle Dump Truck, powered by Cummins X15-565, 565HP diesel engine and Eaton Fuller Ultrashift Plus automatic transmission, equipped with Mac 19'6" smooth side aluminum body, sliding power tarp, 46,000 lb rear axles, 20,000 lb front axle, 20,000 lb lift axle, block/beam suspension, locking axles and differentials, engine brake, aluminum wheels, power windows, locks, and mirrors, cruise control, air conditioning, and 11R24.5 tires. In good to very good condition with good to very good tires. (Odometer Reads 123,038 Miles) **(Purchased New)**



19 INT'L HX520SFA

2019 INTERNATIONAL Model HX520SFA Tri-Axle Dump Truck, powered by Cummins X15-565, 565HP diesel engine and Eaton Fuller 18 speed transmission, equipped with Mac 19'6" steel dump body, power tarp, 46,000 lb rear axles, 20,000 lb front axle, 20,000 lb lift axle, Hendrickson air ride suspension, locking axles and differentials, engine brake, aluminum wheels, power windows, locks, and mirrors, cruise control, air conditioning, and 11R24.5 tires. In good to very good condition with good tires. (Odometer Reads 99,749 Miles) **(Purchased New)**

2007 MACK Model CTP713 Granite Tri-Axle Dump Truck, powered by Mack MP7, 10.8L, 370HP diesel engine and Mack Maxitorque ES 10 speed (8 with low and low low) transmission, equipped with Ox 16' steel dump body, sliding power tarp, 44,000 lb rear axles, 18,000 lb front axle, camelback spring suspension, inter axle lock, engine brake, steel wheels, heated mirrors, cruise control, air conditioning, and 11R24.5 tires. In good condition with good tires. (Odometer Reads 367,703 Miles)

2014 PETERBILT Model 367 Tri-Axle Dump Truck, powered by Cummins ISX15-450, 450HP diesel engine and Eaton automatic transmission, equipped with Hwey 18' aluminum dump body, power sliding tarp, 46,000 lb rear axles, 20,000 lb front axle, 20,000 lb lift axle, steering lift axle, Peterbilt Air Trac suspension, full locking differential, engine brake, aluminum wheels, cruise control, air conditioning, and 11R24.5 tires. In good condition with good tires. (Odometer Reads 226,319 Miles) (Reconstructed Title) (Dealer Purchase - Used)

2010 INTERNATIONAL Model WorkStar 7400 SBA Tandem Axle Dump Truck, powered by Maxxforce 9, 330HP diesel engine and Allison automatic transmission, equipped with J&J 14'6" steel dump body with manual sliding tarp, 46,000 lb rear, 18,000 lb front axle, 64,000 lb GVWR, Hendrickson air ride suspension, tow package with air, cruise control, air conditioning, and 11R22.5 tires. In good condition with good tires. (Odometer Reads 173,515 Miles)



07 MACK CTP713 GRANITE



14 PETERBILT 367



10 INT'L WORKSTAR 7400 SBA

SHOP AND CONTRACTORS TOOLS

2022 **TITAN** Powerliner 8955 Dual Head Sprayer Line Striper, Honda gas • **GRACO** Line Lazer 3400 Single Sprayer, gas • **HUSQUARNA** FS524 Concrete Saw 24" Blade • **HUSQUARNA** FS513 Concrete Saw 18" Blade • (4) **HUSQUARNA** FS413 Walk Behind Concrete Saws • (2) Mikasa Plate compactors • **WACKER** Foot Compactor • (2) **STIHL** Back Pack Blowers • **TROYBILT** Storm 3090 2-Stage Snow Blower • (2) 275-Gallon Oil Tanks with Pneumatic Pumps and Hose Reels • **GARDNER DENVER** Vertical Shop Air Compressor, 7.5 HP, 208-230 Volt Single Phase • **MILLERMATIC** 212 Auto-Set Mig Welder • Oxygen/Acetylene Torch Set • **HOTSY** Electric Steam Cleaner • Horizontal Metal Cutting Band Saw • **NATIONAL** 20-Ton Shop Press • Rolling Tool Chest • **DAYTONA** 2-Ton Floor Jack • **PITTSBURGH** 22-Ton Pneumatic Bottle Jack • Fabric Road Signs • (1) Pallet Ice Melter

22 TITAN DUAL HEAD STRIPER



LIGHT DUTY TRUCKS, TRAILERS, AND VEHICLE

2021 RAM Model 3500HD 4x4 Stake Body Truck, powered by Hemi 6.4L gas engine and automatic transmission, equipped with 9' stake body, under body toolboxes, Meyer 8.5' snowplow with EZ mount, Snow-Way electric spreader, hitch mount, single rear wheels, full power package, and 275/70R18 tires. In good to very good condition with good tires. (Odometer Reads 49,619 Miles) **(Purchased New)**



'21 RAM 3500HD 4X4

2014 FORD Model F550XL SD 4x4 Crew Cab Flatbed Truck, powered by Powerstroke 6.7L diesel engine and automatic transmission, equipped with J&J 9' steel flatbed, Western 9' snowplow, VMAC behind cab air compressor, 525 gallon poly water tank, 2" centrifugal pump, air hose reel, dually, power windows and locks, cruise control, air conditioning, and 225/70R19.5 tires. In good condition with good tires. (Odometer Reads 114,360 Miles) **(Purchased New)**



'14 FORD F550XL SD 4X4

2014 CHEVROLET Model 2500HD Crew Cab Utility Truck, powered by Vortec 6.0L gas engine and automatic transmission, equipped with Knapheide 8' open utility body, 100 gallon fuel tank with 12 volt pump, power windows and locks, cruise control, air conditioning, and 245/75R17 tires. In good condition with fair to good tires. (Odometer Reads 191,417 Miles) **(Purchased New)**



'14 CHEVY 2500HD

2014 CHEVROLET Model 2500HD Crew Cab Utility Truck, powered by Vortec 6.0L gas engine and automatic transmission, equipped with Knapheide 8' open utility body, 100 gallon fuel tank with 12 volt pump, power windows and locks, cruise control, air conditioning, and 245/75R17 tires. In good condition with good tires. (Odometer Reads 131,462 Miles) **(Purchased New)**



'14 CHEVY 2500HD

2018 ISUZU Model NQR Cab Over Straight Truck, powered by diesel engine and automatic transmission, equipped with Morgan 16' smooth side aluminum body with 2,500 lb electric lift gate, dual rear wheels, and 225/70R19.5 tires. In good condition with good tires. (Odometer Reads 77,573 Miles) **(Purchased New)**



'18 ISUZU NQR

2019 FORD Model Transit 250 Van, powered by gas engine and automatic transmission, equipped with strobe lights, power windows and locks, cruise control, air conditioning, and 235/65R16 tires. In good condition with good tires. (Odometer Reads 91,598 Miles) (Dealer Purchase - Used)



'19 FORD TRANSIT 250

2012 FORD Model SLT Transit Connect Van, powered by 2.0L gas engine and automatic transmission, equipped with power windows and locks, cruise control, air conditioning, and 205/65R15 tires. In fair to good condition with fair to good tires. (Odometer Reads 125,443 Miles) (Dealer Purchase - Used)



'12 FORD SLT TRANSIT CONNECT

2015 FORD Model Escape SE 4 Door AWD Sport Utility Vehicle, powered by 1.6L turbo gas engine and automatic transmission, equipped with full power package and 235/55R17 tires. In fair to good condition with good tires. (Odometer Reads 203,908 Miles) (Dealer Purchase - Used)



'15 FORD SE AWD SUV

2008 CARGO EXPRESS Model Tandem Axle V-Nose Enclosed Utility Trailer, equipped with 16' x 7' enclosed body with fold down rear door, curbside door, electric brakes, 2-5/16" ball hitch, and 205/75R15 tires. In fair to good condition with good tires. **(Purchased New)**



'08 CARGO EXPRESS

2010 ANDERSON Tandem Axle Tag-A-Long Trailer, equipped with 15' x 8' deck over wheels, 4' beavertail, ramps, and 235/80R16 tires. In good condition with good tires. (Tank and Pump in Photo Will Be Removed and Sold Separately) (2) 12' Snow Push Boxes (Backhoe) • (2) **WESTERN 7'6"** Snow Plows with Lights



'10 ANDERSON (TANK AND PUMP SOLD SEPARATELY)